

(KENAI A-5)

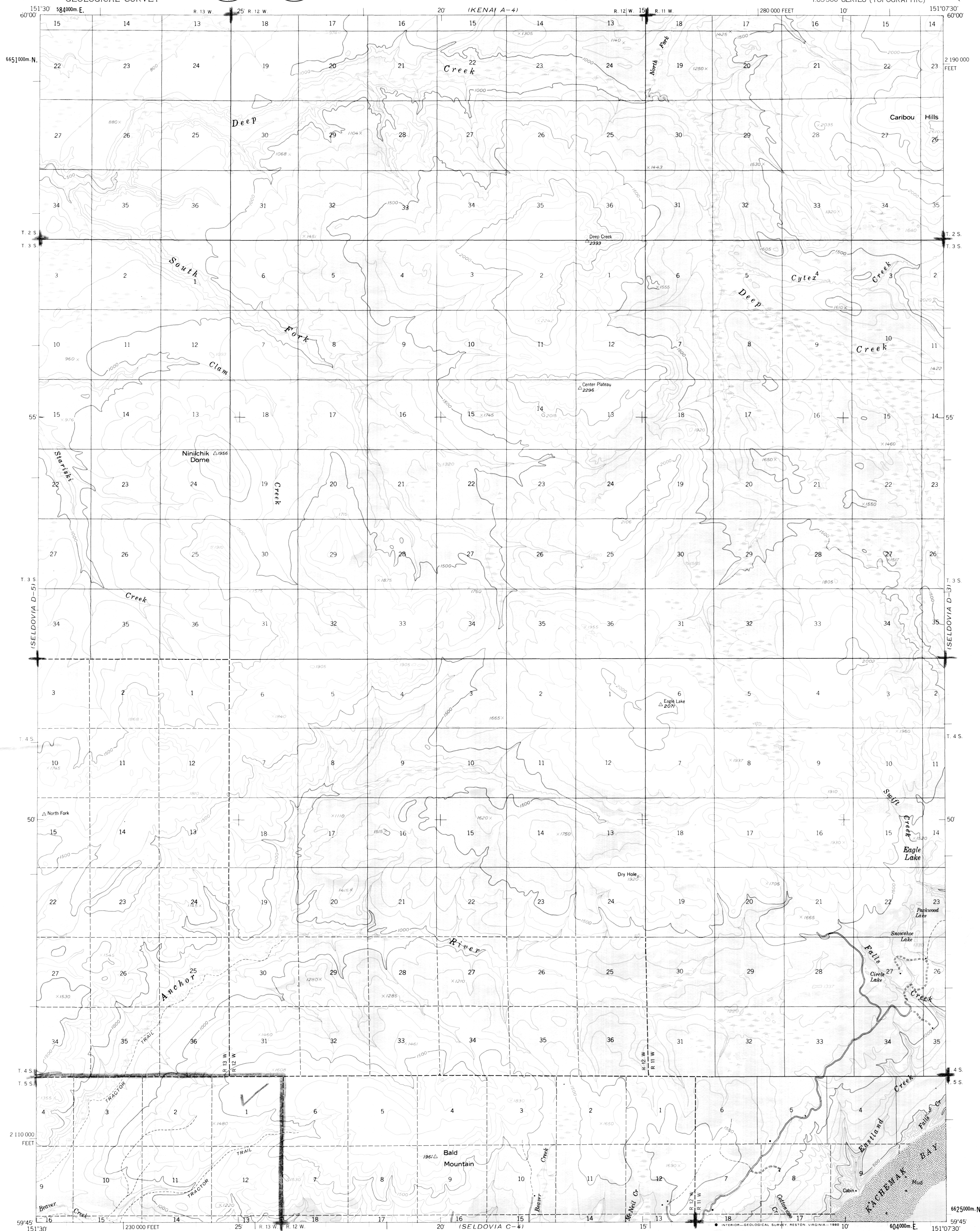
UNITED STATES
DEPARTMENT OF THE INTERIOR
GEOLOGICAL SURVEY



PDF 87-33-35B

SELDOVIA (D-4) QUADRANGLE
ALASKA-KENAI PENINSULA BOROUGH
1:63360 SERIES (TOPOGRAPHIC)

(KENAI A-3)



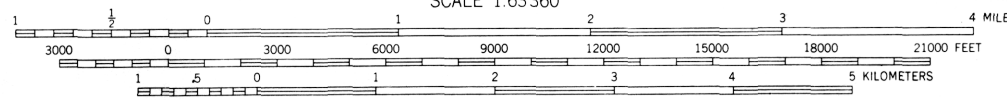
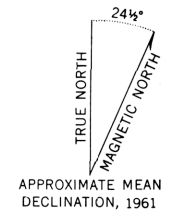
Mapped, edited, and published by the Geological Survey
Control by USGS and USCE

Topography by photogrammetric methods from aerial photographs
taken 1950-1951, field annotated 1961. Map not field checked
Selected hydrographic data compiled from USC&GS Charts
8531 (1:82 652 scale, 1959) and 8554 (1:200 000 scale, 1959)
This information is not intended for navigational purposes

Universal Transverse Mercator projection, 1927 North American datum
10,000-foot grid based on Alaska coordinate system, zone 4
1000 meter Universal Transverse Mercator grid ticks,
zone 5, shown in blue

Gray land lines represent unsurveyed and unmarked locations
predetermined by the Bureau of Land Management.
Folio S-16, Seward Meridian

Swamps, as portrayed, indicate only the wetter areas,
usually of low relief, as interpreted from aerial photographs



CONTOUR INTERVAL 100 FEET
NATIONAL GEODETIC VERTICAL DATUM OF 1929
SHORELINE SHOWN REPRESENTS THE APPROXIMATE LINE OF MEAN HIGH WATER
THE MEAN RANGE OF TIDE IS APPROXIMATELY 16 FEET

ROAD CLASSIFICATION
Light-duty ——— Unimproved dirt - - - - -



FOR SALE BY U. S. GEOLOGICAL SURVEY
FAIRBANKS, ALASKA 99701, DENVER, COLORADO 80225, OR RESTON, VIRGINIA 22092
A FOLDER DESCRIBING TOPOGRAPHIC MAPS AND SYMBOLS IS AVAILABLE ON REQUEST

SELDOVIA (D-4), ALASKA
N5945-W15107.5/15X22.5
1961
MINOR REVISIONS 1978

(SELDOVIA C-5)

(SELDOVIA C-3)