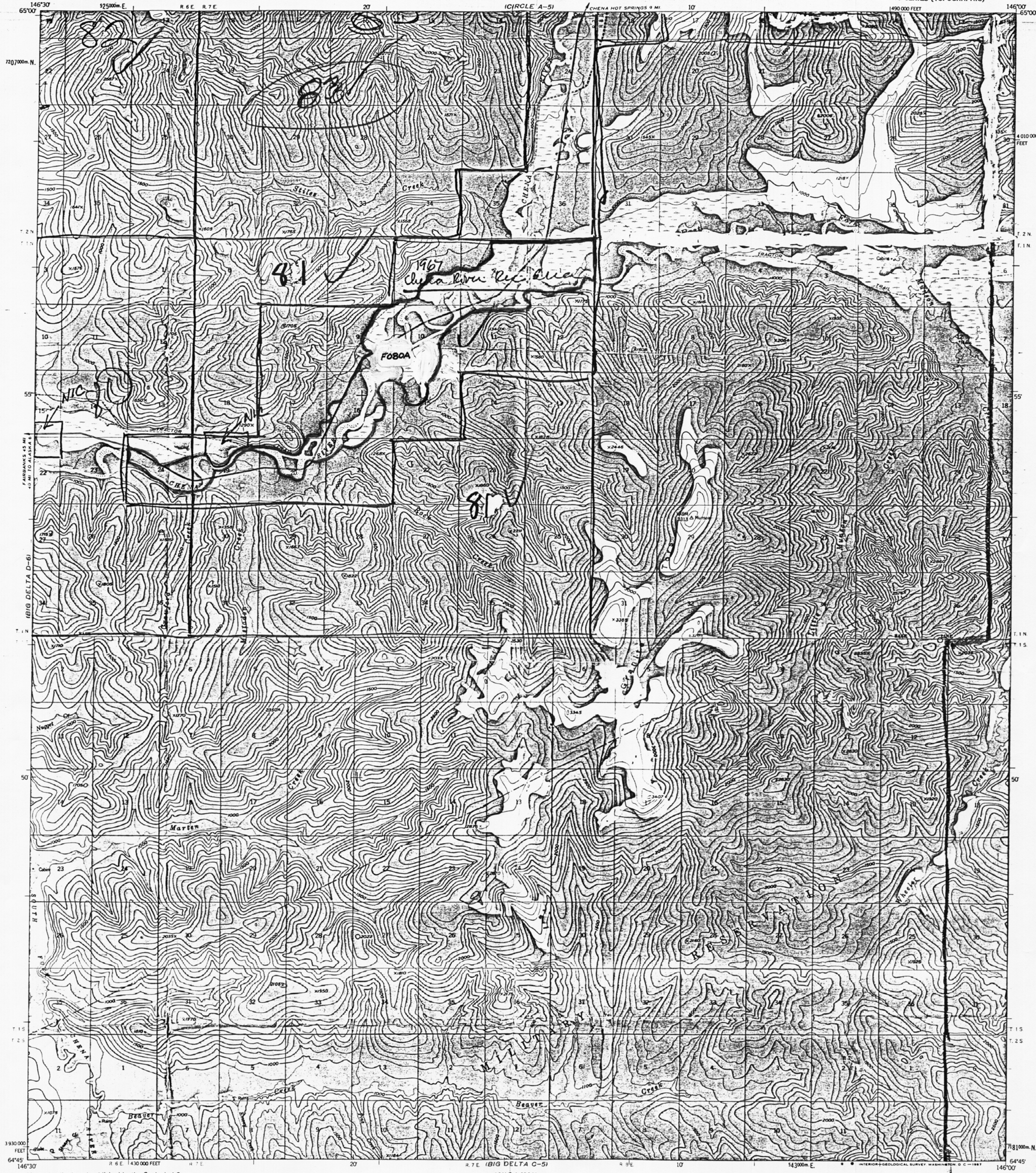


UNITED STATES
DEPARTMENT OF THE INTERIOR
GEOLOGICAL SURVEY

BIG DELTA (D-5) QUADRANGLE
ALASKA - FAIRBANKS NORTH STAR BOROUGH
1:63 360 SERIES (TOPOGRAPHIC)



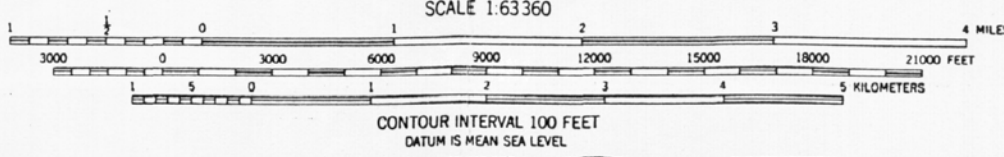
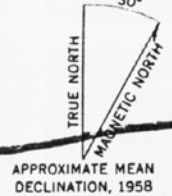
Mapped, edited, and published by the Geological Survey

Control by USGS and USC&GS
Topography by photogrammetric methods from aerial photographs
taken 1951 and 1954, field annotated 1958. Map not field checked

Universal Transverse Mercator projection 1927 North American datum
10,000 foot grid based on Alaska coordinate system, zone 3
1000-meter Universal Transverse Mercator grid ticks,
zone 6, shown in blue

Land lines represent unsurveyed and unmarked locations
predetermined by the Bureau of Land Management
Folios F-7, and F-9, Fairbanks Meridian

Swamps, as portrayed, indicate only the wetter areas
usually of low relief, as interpreted from aerial photographs



ROAD CLASSIFICATION
Light duty ————— Unimproved dirt - - - - -



FOR SALE BY U.S. GEOLOGICAL SURVEY
FAIRBANKS, ALASKA 99701, DENVER, COLORADO 80225, OR WASHINGTON, D. C. 20242

BIG DELTA (D-5), ALASKA
N6445-W14600/15X30