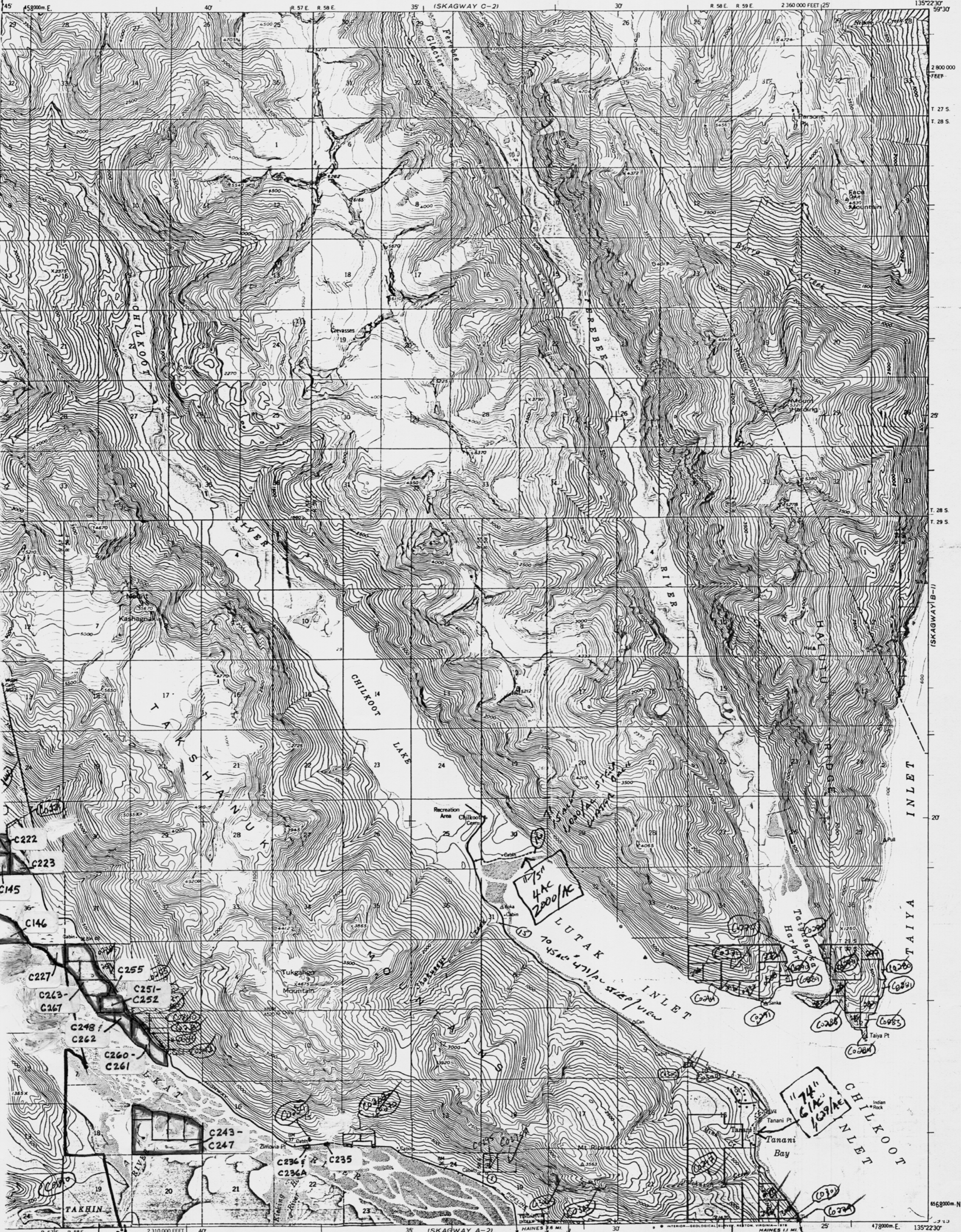


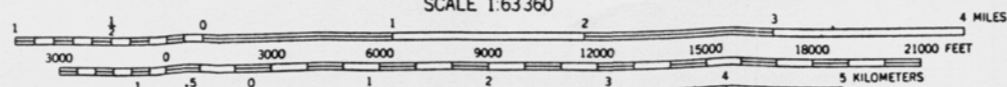
UNITED STATES
DEPARTMENT OF THE INTERIOR
GEOLOGICAL SURVEY

SKAGWAY (B-2), QUADRANGLE
ALASKA

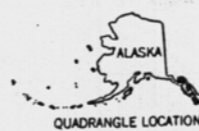
1:63 360 SERIES (TOPOGRAPHIC)



Prepared, edited, and published by the Geological Survey
Control by USGS, USC&GS and Geodetic Survey of Canada
Photography by photogrammetric methods from aerial photographs
in 1948, field annotated 1954. Map not field checked
Detailed hydrographic data compiled from USC&GS
1:8303 (1958). This information is not intended
for navigational purposes
Universal Transverse Mercator projection, 1927 North American datum
100-foot grid based on Alaska coordinate system, zone 1
1:250,000 meter Universal Transverse Mercator grid ticks,
8, shown in blue
Dashed lines represent unsurveyed and unmarked locations



CONTOUR INTERVAL 100 FEET
NATIONAL GEODETIC VERTICAL DATUM OF 1929
DEPTH CURVES IN FEET-DATUM IS MEAN LOWER LOW WATER
SHORELINE SHOWN REPRESENTS THE APPROXIMATE LINE OF MEAN HIGH WATER
THE MEAN RANGE OF TIDE IS APPROXIMATELY 14 FEET



ROAD CLASSIFICATION
Medium-duty ——— Light-duty ———
Unimproved dirt - - - - -
State Route ○

FOR SALE BY U.S. GEOLOGICAL SURVEY
FAIRBANKS, ALASKA 99701, DENVER, COLORADO 80225, OR RESTON, VIRGINIA 22092

SKAGWAY (B-2), ALASKA
N9915-W13522.5/1522.5