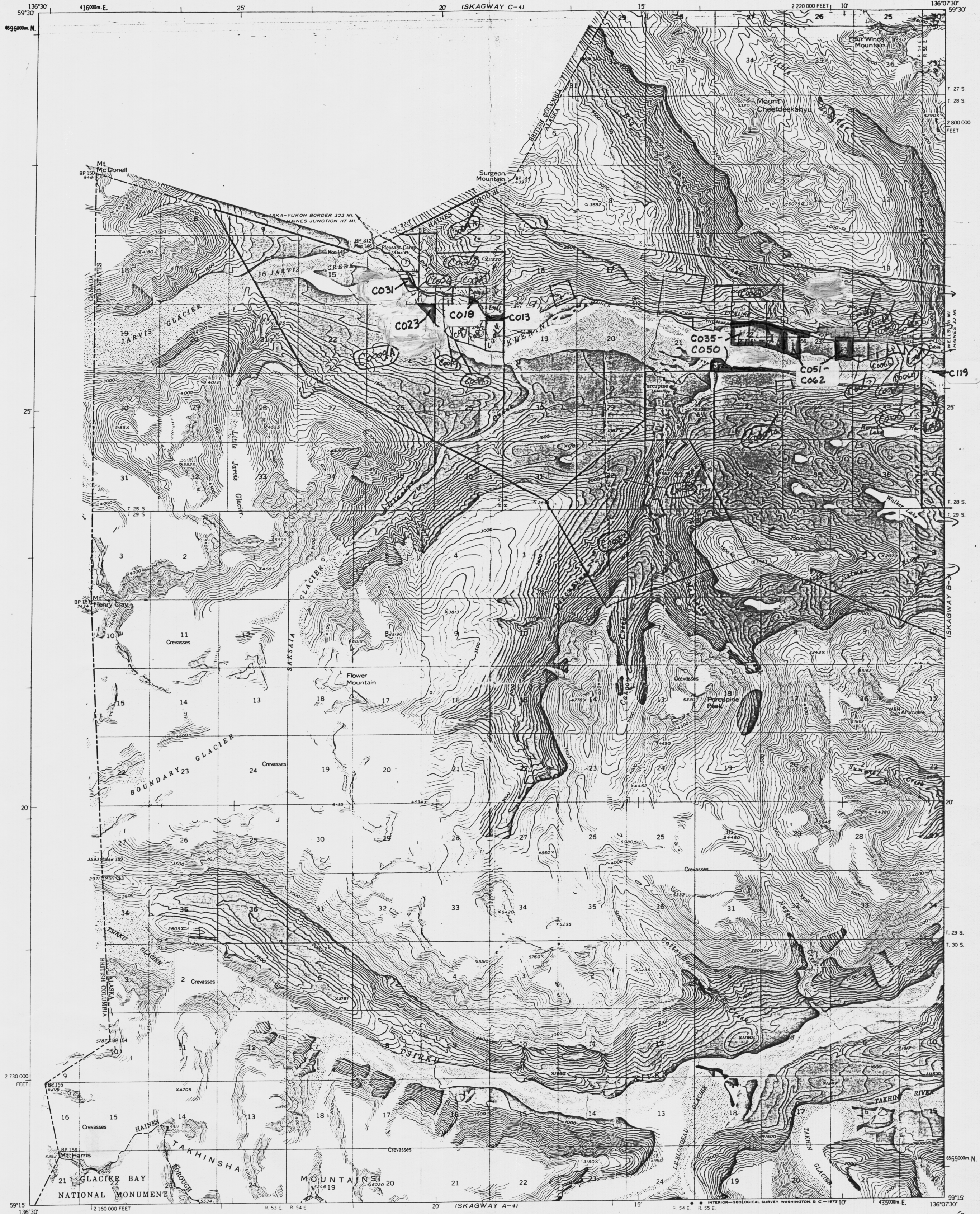
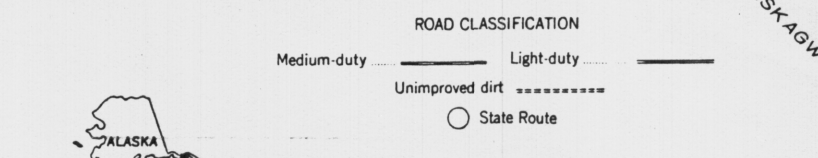
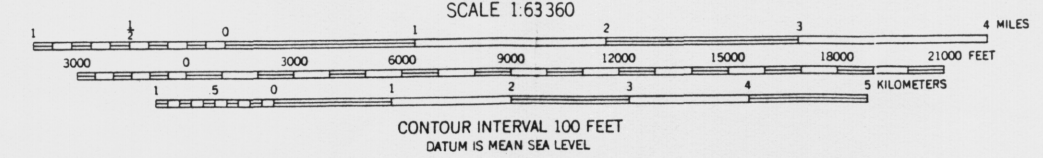
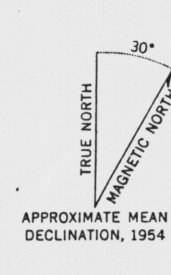


UNITED STATES  
DEPARTMENT OF THE INTERIOR  
GEOLOGICAL SURVEY

SKAGWAY (B-4) QUADRANGLE  
ALASKA  
1:63 360 SERIES (TOPOGRAPHIC)



Mapped, edited, and published by the Geological Survey  
Control by USGS, USC&GS, International Boundary Commission,  
and Geodetic Survey of Canada  
Topography by photogrammetric methods from aerial photographs  
taken 1948, field annotated 1954. Map not field checked  
Universal Transverse Mercator projection, 1927 North American datum  
10,000-foot grid based on Alaska coordinate system, zone 1  
1000 meter Universal Transverse Mercator grid ticks,  
zone 8, shown in blue  
Gray land lines represent unsurveyed and unmarked locations  
predetermined by the State of Alaska, Division of Lands  
Folio CR-11, Copper River Meridian



FOR SALE BY U. S. GEOLOGICAL SURVEY  
FAIRBANKS, ALASKA 99701, DENVER, COLORADO 80225, OR WASHINGTON, D. C. 20242

SKAGWAY (B-4), ALASKA  
N5915-W13607.5/15X22.5  
1954