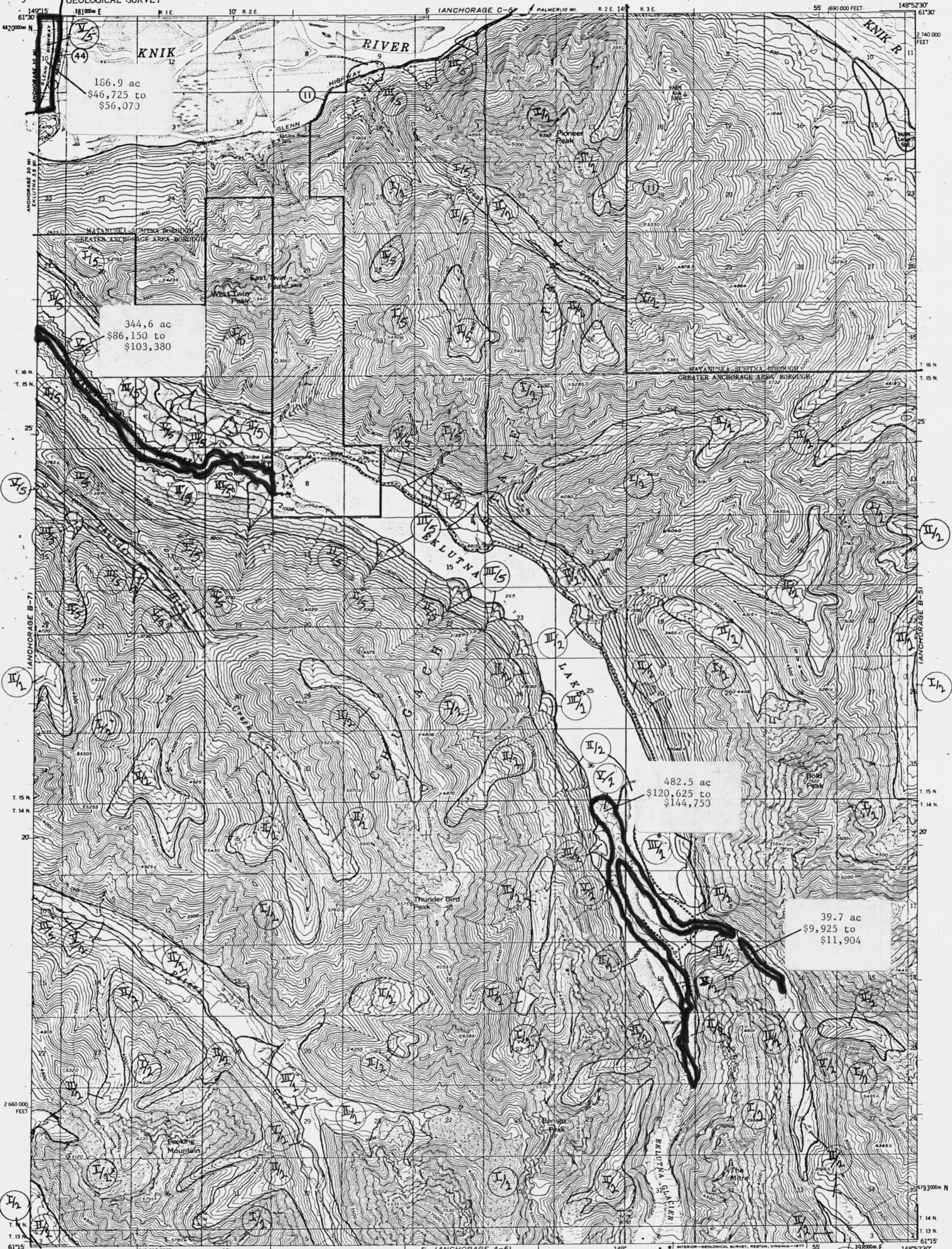


UNITED STATES
DEPARTMENT OF THE INTERIOR
GEOLOGICAL SURVEY

ANCHORAGE (B-6) QUADRANGLE
ALASKA
1:63 360 SERIES (TOPOGRAPHIC)



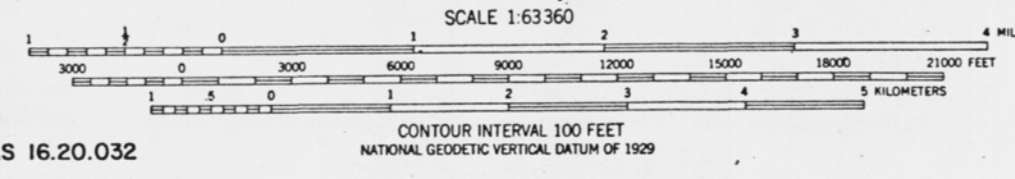
166.9 ac
\$46,725 to
\$56,070

344.6 ac
\$86,150 to
\$103,380

482.5 ac
\$120,625 to
\$144,750

39.7 ac
\$9,925 to
\$11,904

Mapped, edited, and published by the Geological Survey
Control by USGS, USGAS, and USFS
LEGISLATIVE DESIGNATED AREA
Topography by photogrammetric methods from aerial photographs taken 1957.
CHUGACH STATE PARK AS 41.21.121-125
Universal Transverse Mercator projection, 1927 North American datum
44 PALMER HAY FLATS STATE GAME REFUGE AS 16.20.032
10,000 foot contour interval
1000 meter Universal Transverse Mercator grid ticks, zone 6, shown in blue
Gray land lines represent unsurveyed and unmarked locations predetermined by the Bureau of Land Management.
Folio S-14, Seward Meridian
Swamps, as portrayed, indicate only the wetter areas, usually of low relief, as interpreted from aerial photographs



ROAD CLASSIFICATION
ANCHORAGE (B6) 1976
Medium-duty
Unimproved dirt
State Route

FOR SALE BY U.S. GEOLOGICAL SURVEY
FAIRBANKS, ALASKA 99701, DENVER, COLORADO 80225, OR RESTON, VIRGINIA 22092
A FOLDER DESCRIBING TOPOGRAPHIC MAPS AND SYMBOLS IS AVAILABLE ON REQUEST

QUADRANGLE LOCATION
ANCHORAGE (B-6), ALASKA
N6115-W14852.5/15X22.5
1960
MINOR REVISIONS 1976
Magoon and others (1976)