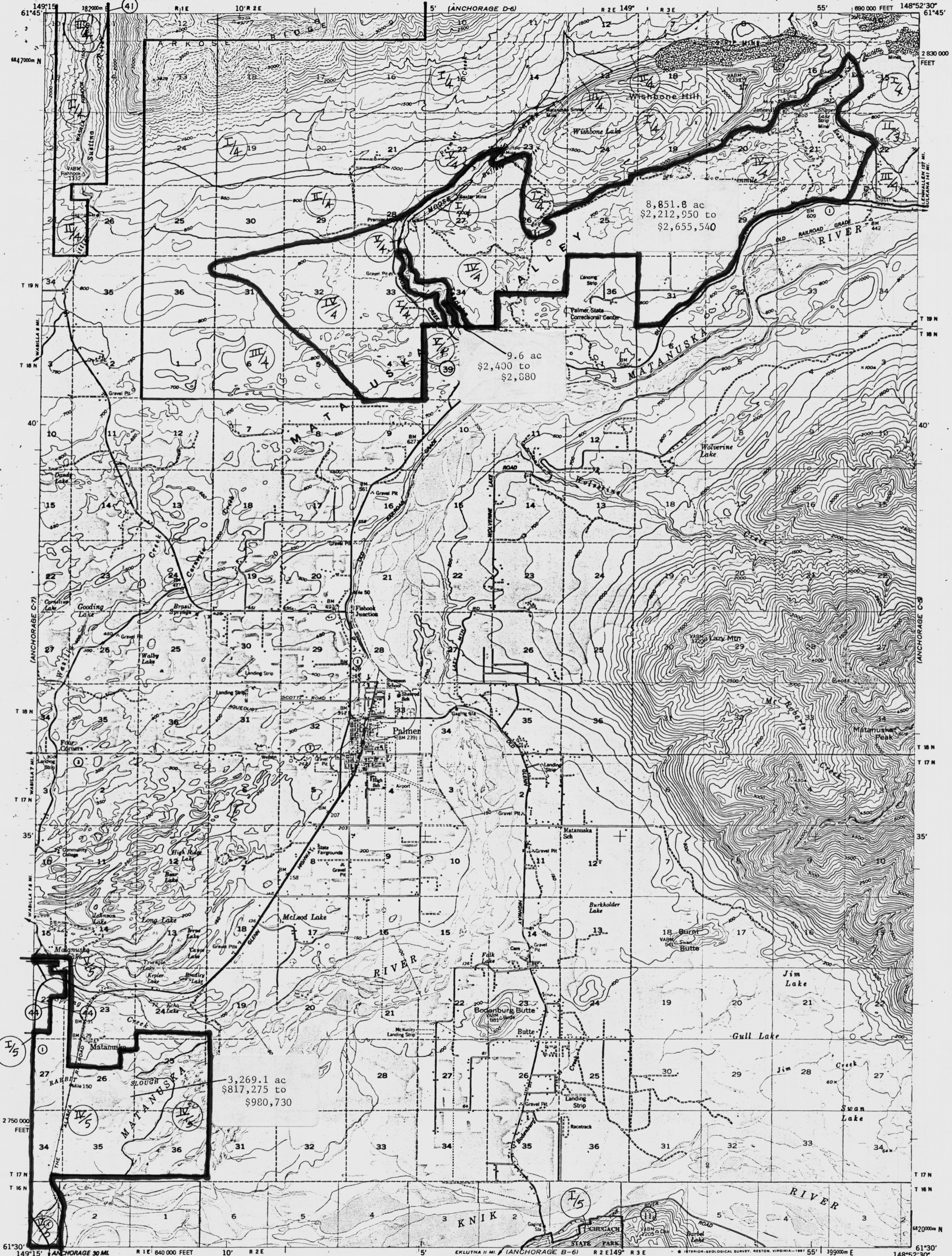


UNITED STATES
DEPARTMENT OF THE INTERIOR
GEOLOGICAL SURVEY

ANCHORAGE (C-6) QUADRANGLE
ALASKA-MATANUSKA-SUSITNA BOROUGH
1:63 360 SERIES (TOPOGRAPHIC)



Maped, edited, and published by the Geological Survey

Control by USGS, NGS, NOAA, and USFS
Topography by photogrammetric methods from aerial photographs taken 1949, with annotations 1951. Map not field checked
Projection and datum: UTM, MATANUSKA-SUSITNA BOROUGH PUBLIC USE AREA AS 41.21.121-125
Universal Transverse Mercator, zone 6
10,000-foot (3000-meter) MATANUSKA-SUSITNA BOROUGH PUBLIC USE AREA AS 16.20.340
system, zone 1927 North American Datum
To place on the predicted North American Datum 1983 move the projection to MATANUSKA-SUSITNA BOROUGH PUBLIC USE AREA AS 41.23.100-130
Gray land lines represent unsurveyed and unmarked locations predetermined by the Bureau of Land Management
Folios S-1 and S-171, ISLANDS AND FLATS STATE GAME REFUGE AS 16.20.038
Swamps, as portrayed, indicate only the wetter areas, usually of low relief, as interpreted from aerial photographs

CONTOUR INTERVALS 50 AND 100 FEET
DOTTED LINES REPRESENT 50-FOOT CONTOURS
AREAS NOT SURVEYED IN DETAIL INDICATED BY BROKEN LINES
NATIONAL GEODETIC VERTICAL DATUM OF 1929

FOR SALE BY U.S. GEOLOGICAL SURVEY
WASBANKS, ALASKA 99701, DENVER, COLORADO 80225 OR RESTON, VIRGINIA 22092
A FOLDER DESCRIBING TOPOGRAPHIC MAPS AND SYMBOLS IS AVAILABLE ON REQUEST

ROAD CLASSIFICATION
ANCHORAGE (C6) 1987
Heavy-duty ——— Light-duty ———
Medium-duty ——— Unimproved dirt - - - - -
○ State Route

QUADRANGLE LOCATION
Anchorage (1962)
Reger and Updike (1983)
ANCHORAGE (C-6), ALASKA
61148-EF-TF-063
1951