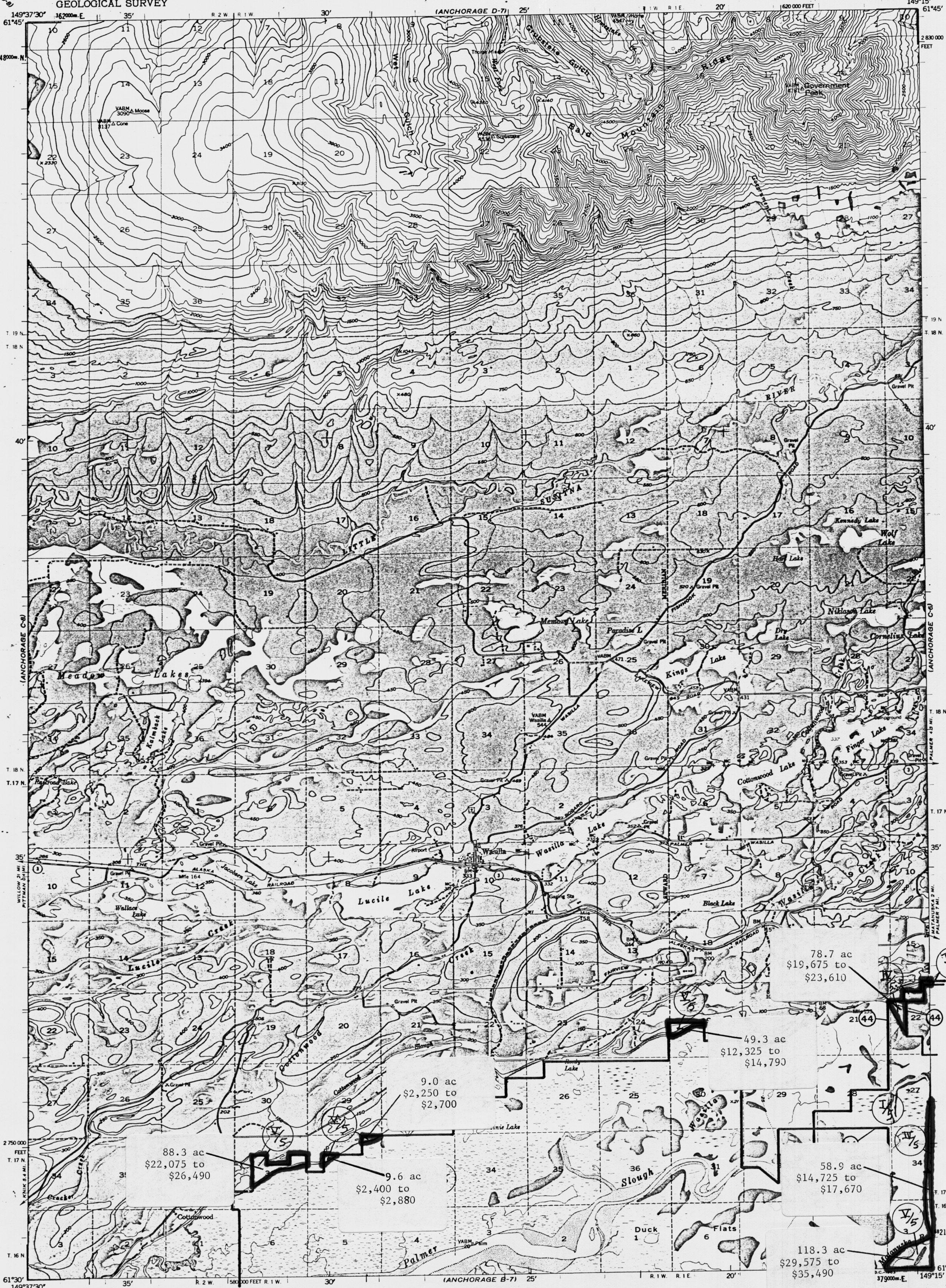


UNITED STATES  
DEPARTMENT OF THE INTERIOR  
GEOLOGICAL SURVEY

ANCHORAGE (C-7) QUADRANGLE  
ALASKA  
1:63 360 SERIES (TOPOGRAPHIC)



88.3 ac  
\$22,075 to  
\$26,490

9.0 ac  
\$2,250 to  
\$2,700

9.6 ac  
\$2,400 to  
\$2,880

49.3 ac  
\$12,325 to  
\$14,790

78.7 ac  
\$19,675 to  
\$23,610

58.9 ac  
\$14,725 to  
\$17,670

118.3 ac  
\$29,575 to  
\$35,490

Mapped, edited, and published by the Geological Survey  
Control by USGS, USC&GS and USCE

Topography by photogrammetric methods from aerial photographs  
taken 1949, field checked 1959, not revised since

**LEGISLATIVE DESIGNATED AREA**  
Universal Transverse Mercator projection, 1927 North American datum  
10,000-foot grid based on Alaska coordinate system, zone 4  
1000-meter UTM grid based on Alaska coordinate system, zone 6, shown in blue

Land lines printed in gray represent unsurveyed and unmarked  
locations predetermined by the Bureau of Land Management  
Folios S-1, S-2, S-13 and S-14, Seward Meridian

APPROXIMATE MEAN  
DECLINATION, 1950

CONTOUR INTERVALS 50 AND 100 FEET  
DOTTED LINES REPRESENT 25-FOOT CONTOURS  
DATUM IS MEAN SEA LEVEL

QUADRANGLE LOCATION

ANCHORAGE (C-7), ALASKA  
N6130-W14915/15X225

Medium-duty Light-duty  
Unimproved ANCHORAGE (C-7) 1962

○ State Route

