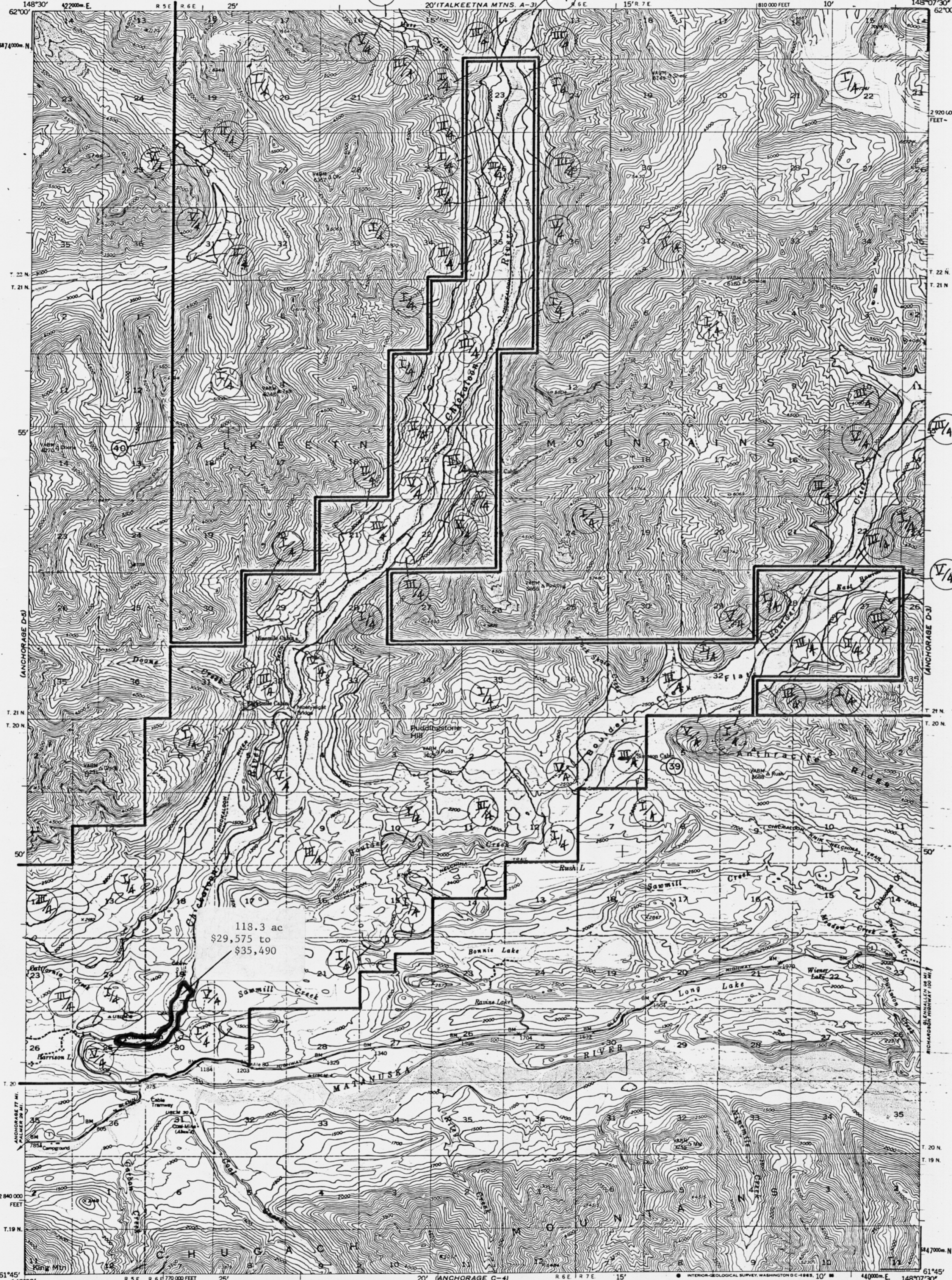


UNITED STATES  
DEPARTMENT OF THE INTERIOR  
GEOLOGICAL SURVEY

ANCHORAGE (D-4) QUADRANGLE  
ALASKA  
1:63 360 SERIES (TOPOGRAPHIC)



118.3 ac  
\$29,575 to  
\$35,490

Mapped, edited, and published by the Geological Survey

Control by USGS and USFWS

LEGISLATIVE DESIGNATED AREA

Topography by photogrammetric methods from aerial photographs taken 1948, 1950, and 1951

Universal Transverse Mercator projection, 1927 North American datum

10,000-foot contour interval, zone 4

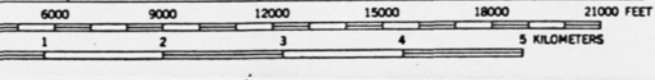
1000-meter contour interval, zone 6, shown in blue

Land lines printed in gray represent unsurveyed and unmarked locations predetermined by the Bureau of Land Management, Folio S-1, Seward Meridian

Dashed red land lines indicate approximate locations of existing ground surveys

APPROXIMATE MEAN DECLINATION, 1948

SCALE 1:63360



CONTOUR INTERVAL 100 FEET  
DOTTED LINES REPRESENT 50 FOOT CONTOURS  
DATUM IS MEAN SEA LEVEL

ROAD CLASSIFICATION  
Medium-duty ANCHORAGE (D-4) 1962  
Unimproved dirt.....  
State Route



ANCHORAGE (D-4), ALASKA  
N6145-W14807.5/15X22.5

FOR SALE BY U. S. GEOLOGICAL SURVEY  
FAIRBANKS, ALASKA DENVER 25, COLORADO WASHINGTON 25, D. C.

1948  
MINOR REVISIONS 1962