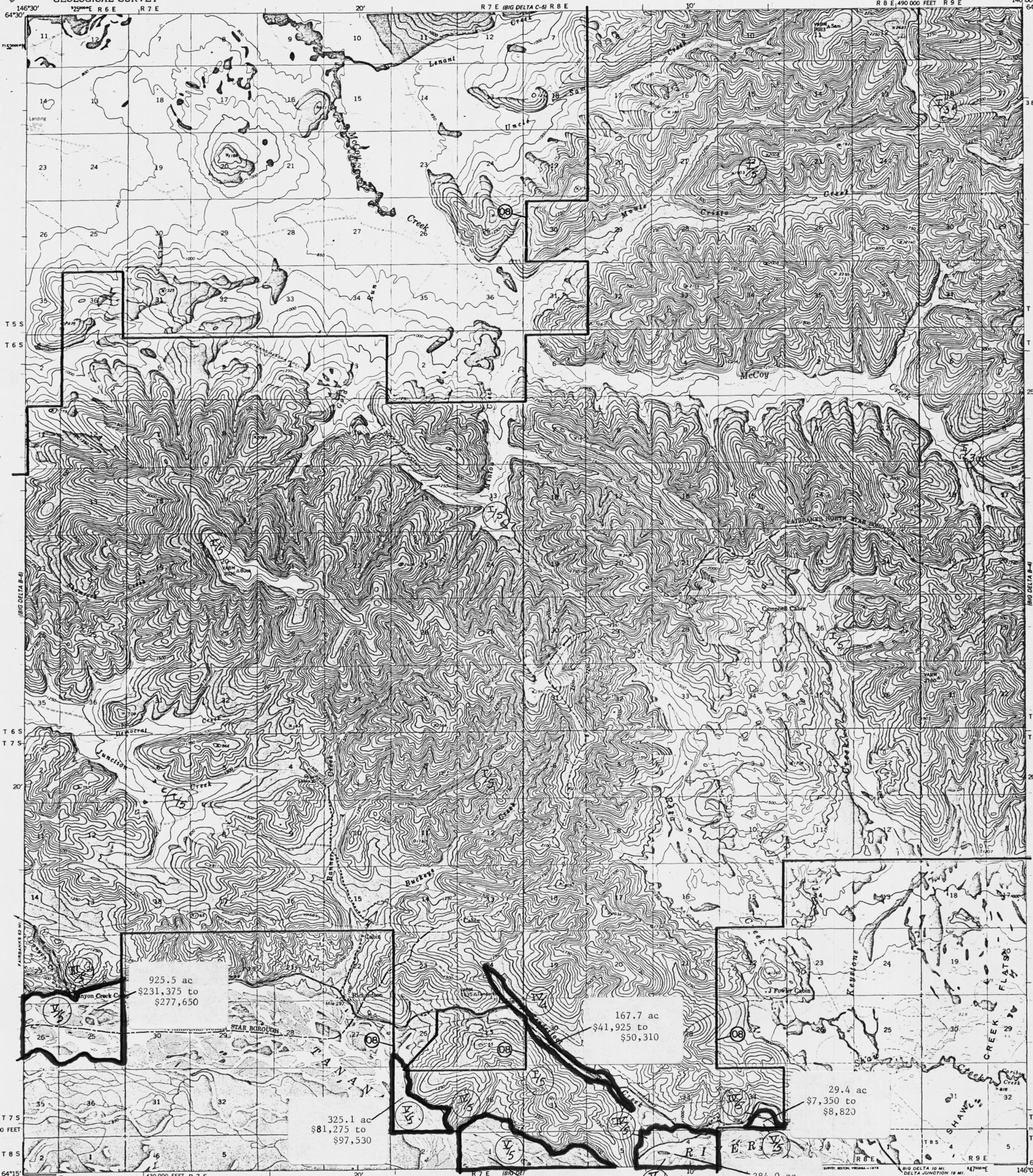


UNITED STATES  
DEPARTMENT OF THE INTERIOR  
GEOLOGICAL SURVEY

BIG DELTA (B-5) QUADRANGLE  
ALASKA

1:63 360 SERIES (TOPOGRAPHIC)  
R 8 E, 490 000 FEET R 9 E



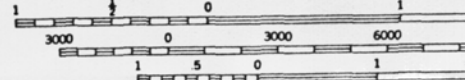
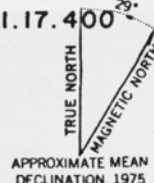
Control by USGS and USFWS  
Topography by photogrammetric methods from aerial photographs taken 1949

**LEGISLATIVE DESIGNATED AREA**  
TANANA VALLEY STATE FOREST, AS 41.17.400

Projection and 10,000-meter grid ticks: Universal Transverse Mercator, zone 6  
10,000-foot grid ticks based on Alaska coordinate system, zone 3, 1927 North American datum

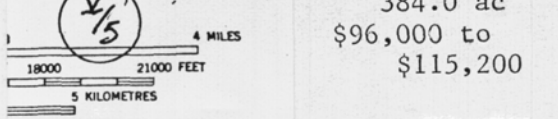
Gray land lines represent unsurveyed and unmarked locations predetermined by the Bureau of Land Management Folio F-9, Fairbanks Meridian

Swamps, as portrayed, indicate only the wetter areas, usually of low relief, as interpreted from aerial photographs



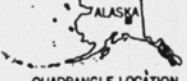
CONTOUR INTERVAL 50 FEET  
DOTTED LINES REPRESENT HALF-INTERVAL CONTOURS  
NATIONAL GEODETIC VERTICAL DATUM OF 1929

FOR SALE BY U.S. GEOLOGICAL SURVEY  
FAIRBANKS, ALASKA 99701, DENVER, COLORADO 80225, OR RESTON, VIRGINIA 22092



ROAD CLASSIFICATION

Primary highway, all weather, hard surface	Light duty road, all weather, hard surface
Secondary highway, all weather, hard surface	Unimproved road, fair or dry weather
	State Route



BIG DELTA (B-5), ALASKA  
N6415-W14600/15X30

1949  
PHOTOREVISED 1975

Revisions shown in purple and recompilation of woodland areas