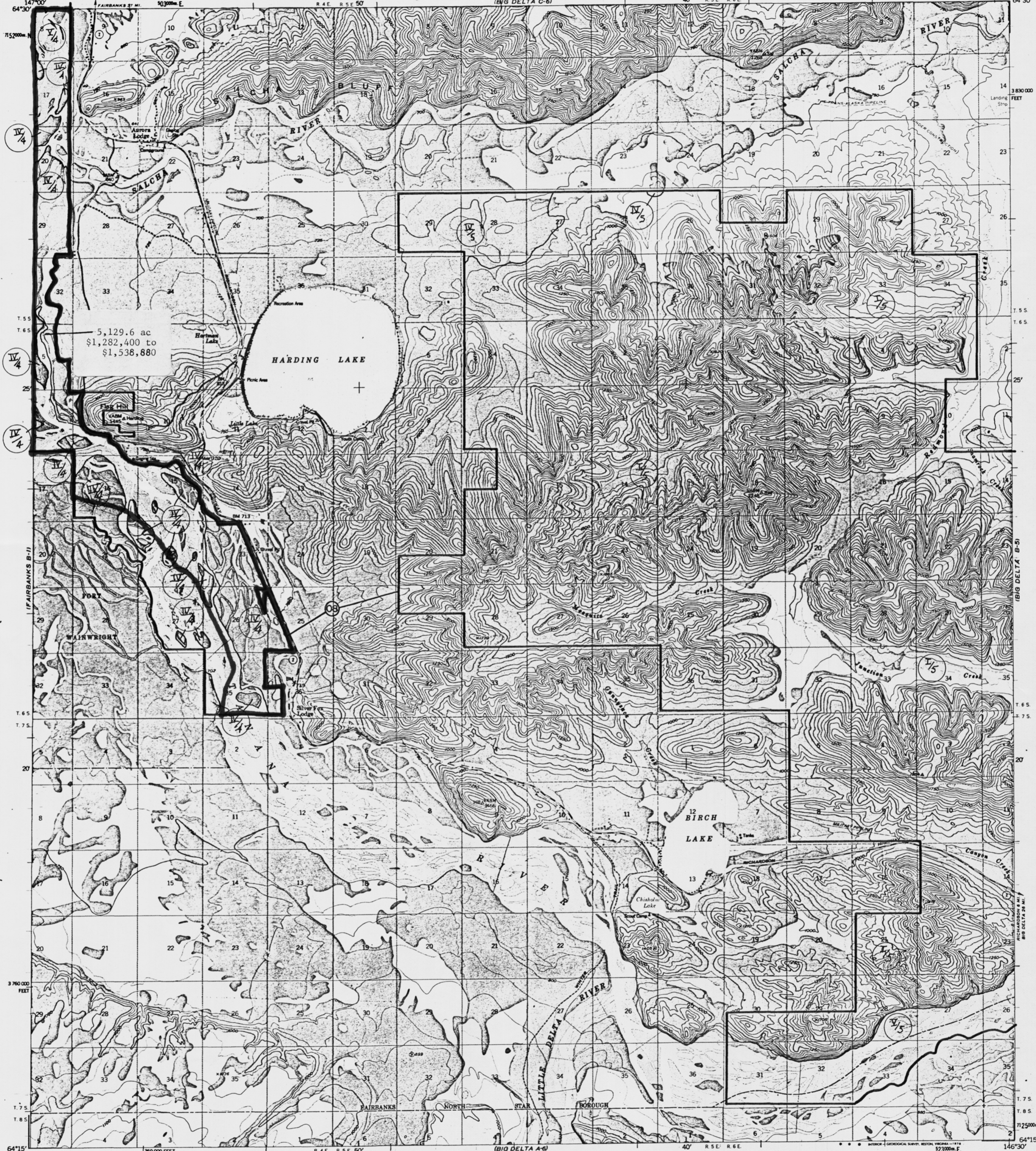


UNITED STATES  
DEPARTMENT OF THE INTERIOR  
GEOLOGICAL SURVEY

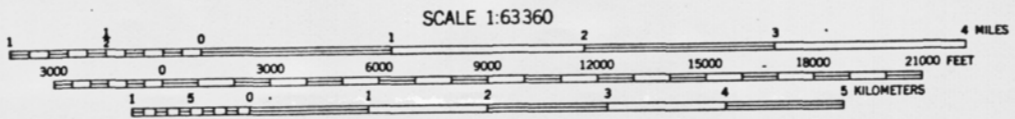
BIG DELTA (B-6) QUADRANGLE  
ALASKA  
1:63 360 SERIES (TOPOGRAPHIC)



5,129.6 ac  
\$1,282,400 to  
\$1,538,880

HARDING LAKE

12 BIRCH LAKE



CONTOUR INTERVAL 50 FEET  
DOTTED LINES REPRESENT 25-FOOT CONTOURS  
DATUM IS MEAN SEA LEVEL

ROAD CLASSIFICATION  
BIG DELTA (B6), 1975  
Medium-duty  
Unimproved dirt  
State Route



BIG DELTA (B-6), ALASKA  
N6415-W14630/15X30

Mapped, edited, and published by the Geological Survey  
Control by USGS and USFWS  
**LEGISLATIVE DESIGNATED AREA**  
Topography by photogrammetric methods from aerial photographs  
taken 1949 and 1949. Map not field checked.  
**OB TANANA VALLEY STATE FOREST AS 41.7.400**  
Universal Transverse Mercator projection, 1927 North American datum  
10,000-foot grid based on Alaska coordinate system, zone 3  
1000-meter Universal Transverse Mercator grid ticks,  
zone 6, shown in blue  
Gray land lines represent unsurveyed and unmarked locations  
predetermined by the Bureau of Land Management  
Folio F-9, Fairbanks Meridian

APPROXIMATE MEAN  
DECLINATION, 1975