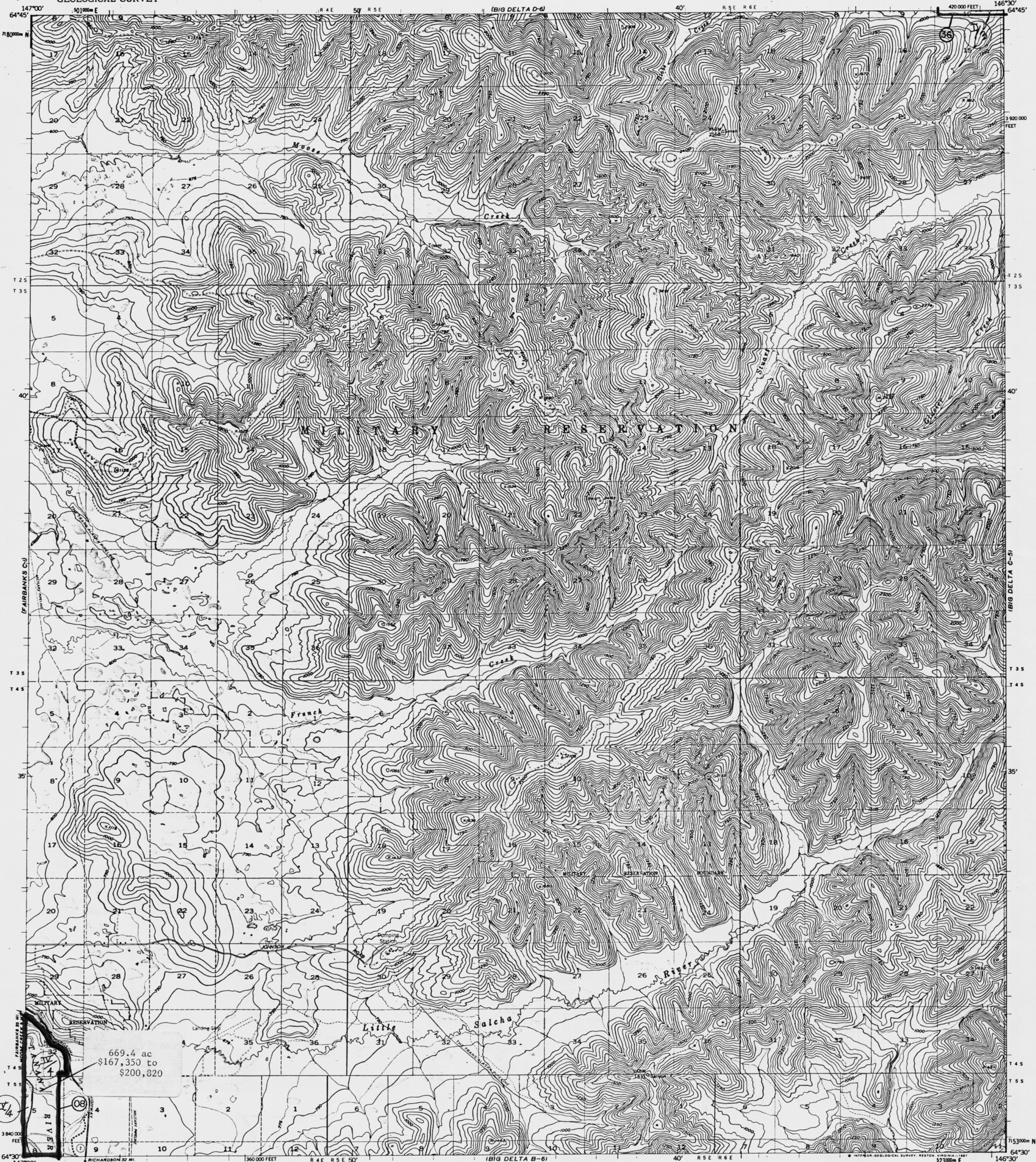


UNITED STATES  
DEPARTMENT OF THE INTERIOR  
GEOLOGICAL SURVEY

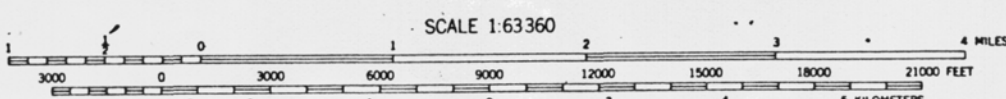
BIG DELTA (C-6) QUADRANGLE  
ALASKA-FAIRBANKS NORTH STAR BOROUGH  
1:63 360 SERIES (TOPOGRAPHIC)



669.4 ac  
\$167,350 to  
\$200,820

Mapped, edited, and published by the Geological Survey

**LEGISLATIVE DESIGNATED AREA**  
Control by USGS and NOS/NOAA  
Topography by photogrammetric methods from aerial photographs taken 1949. Map not field checked.  
Projection and datum: 1927 North American Datum 1983 move the projection lines 50 meters north and 116 meters east  
Gray land lines represent unsurveyed and unmarked locations predetermined by the Bureau of Land Management  
Folio F-9, Fairbanks Meridian  
Swamps, as portrayed, indicate only the wetter areas, usually of low relief, as interpreted from aerial photographs



CONTOUR INTERVAL 50 FEET  
DOTTED LINES REPRESENT 25 FOOT CONTOURS  
DATUM IS MEAN SEA LEVEL

ROAD CLASSIFICATION  
**BIG DELTA (C6), 1987**  
Medium-duty  
Light-duty  
Unimproved dirt  
State Route



**BIG DELTA (C-6), ALASKA**  
64146-E5-TF-063

FOR SALE BY U.S. GEOLOGICAL SURVEY  
FAIRBANKS, ALASKA 99701, DENVER, COLORADO 80225, OR RESTON, VIRGINIA 22092

1949  
\*PHOTOREVISED 1975