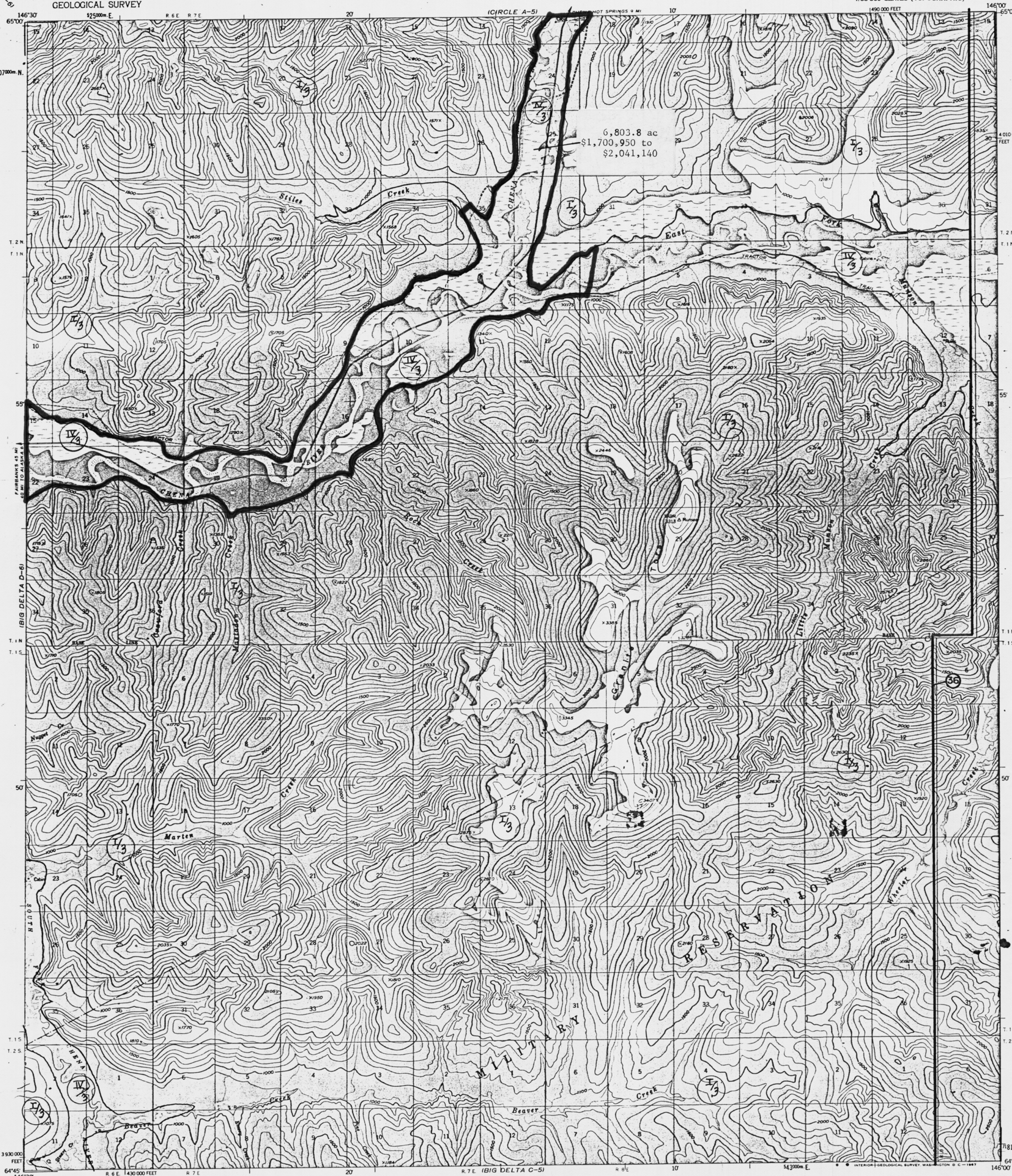
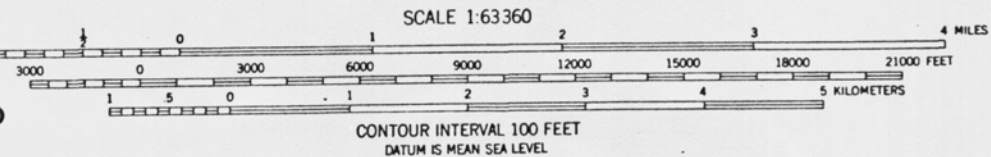


UNITED STATES
DEPARTMENT OF THE INTERIOR
GEOLOGICAL SURVEY

BIG DELTA (D-5) QUADRANGLE
ALASKA - FAIRBANKS NORTH STAR BOROUGH
1:63 360 SERIES (TOPOGRAPHIC)



Mapped, edited, and published by the Geological Survey
Control by USGS and USCA&GS
LEGISLATIVE DESIGNATED AREA
Topography by photogrammetric methods from aerial photographs
taken 1951-1954, field annotated 1958. Map not field checked
1958. U.S. Geological Survey, Reston, Virginia.
(36) CHENA RIVER STATE RECREATION AREA AS 46-21.475 - 490
Universal Transverse Mercator projection, zone 3
10,000-foot grid based on Alaska coordinate system, zone 3
1000-meter Universal Transverse Mercator grid ticks,
zone 6, shown in blue
Land lines represent unsurveyed and unmarked locations
predetermined by the Bureau of Land Management
Folios F-7, and F-9, Fairbanks Meridian
Swamps, as portrayed, indicate only the wetter areas,
usually of low relief, as interpreted from aerial photographs



FOR SALE BY U.S. GEOLOGICAL SURVEY
FAIRBANKS, ALASKA 99701, DENVER, COLORADO 80225, OR WASHINGTON, D.C. 20242
A FOLDER DESCRIBING TOPOGRAPHIC MAPS AND SYMBOLS IS AVAILABLE ON REQUEST

ROAD CLASSIFICATION
Light-duty ————— Unimproved dirt

QUADRANGLE LOCATION

BIG DELTA (D-5), ALASKA
N6445-W14600/15X30

1958
MINOR REVISIONS 1966

Weber and Nathans (1978)