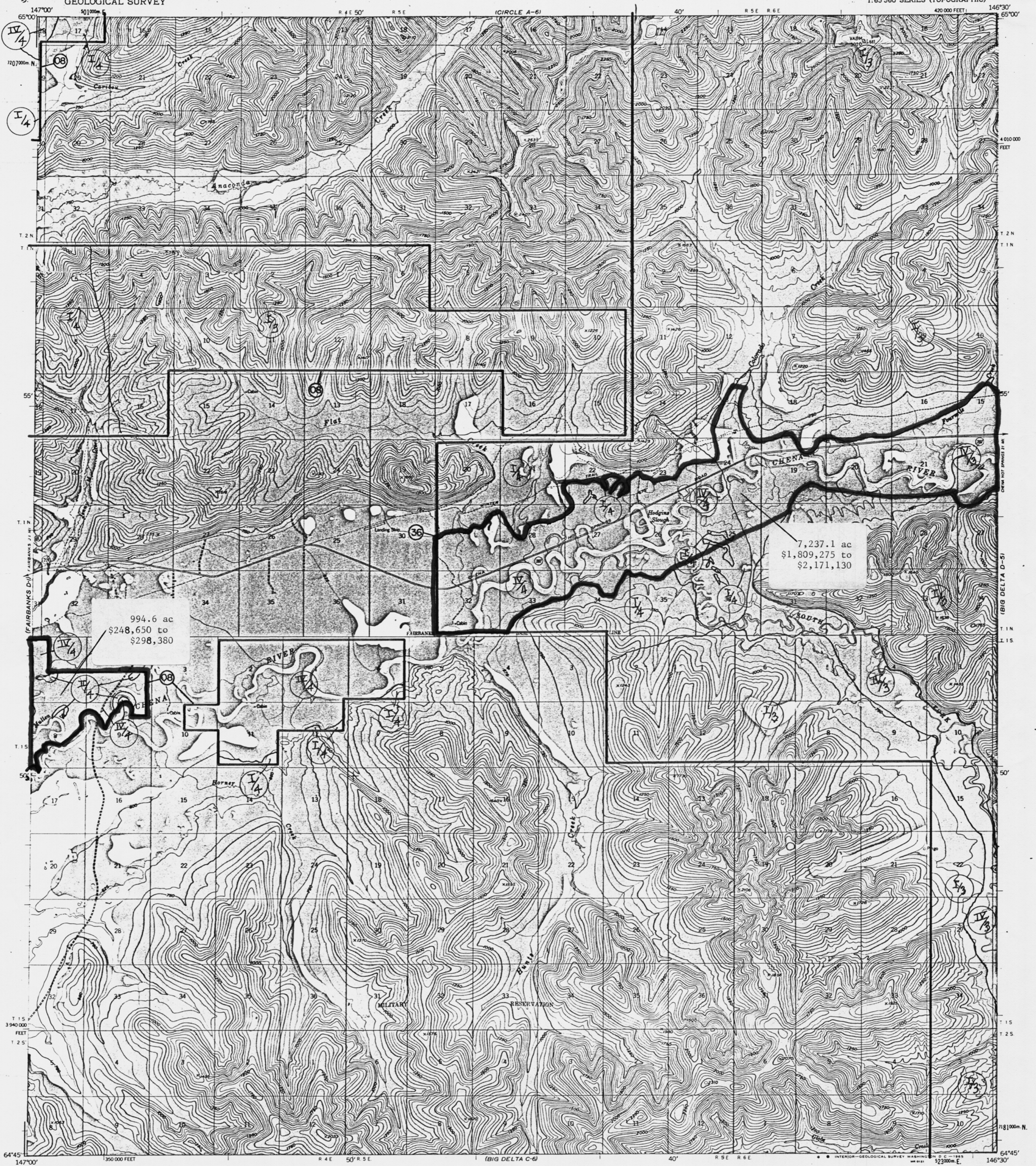


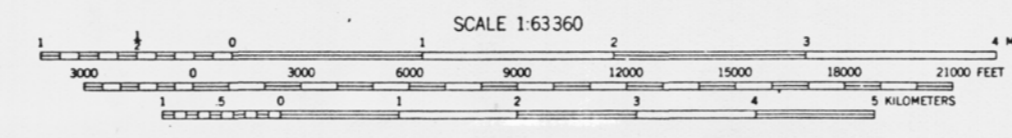
UNITED STATES
DEPARTMENT OF THE INTERIOR
GEOLOGICAL SURVEY

BIG DELTA (D-6) QUADRANGLE
ALASKA
1:63 360 SERIES (TOPOGRAPHIC)



994.6 ac
\$248,650 to
\$298,380

7,237.1 ac
\$1,809,275 to
\$2,171,130



Maped, edited, and published by the Geological Survey
Control by USGS and USC&GS
LEGISLATIVE DESIGNATED AREA
Topography by photogrammetric methods from aerial photographs
taken 1949-50, supplemented by 1950 wet field checks
Universal Transverse Mercator projection, 1927 North American datum
10,000-foot contour based on Alaska coordinate system, zone 3
1000-meter contour based on Alaska coordinate system, zone 6, shown in blue
Land lines represent unsurveyed and unmarked locations
predetermined by the Bureau of Land Management
Folios F-7, and F-9, Fairbanks Meridian
Swamps, as portrayed, indicate only the wetter areas,
usually of low relief, as interpreted from aerial photographs

FOR SALE BY U. S. GEOLOGICAL SURVEY
FAIRBANKS, ALASKA 99701, DENVER, COLORADO 80225, OR WASHINGTON, D. C. 20242

ROAD CLASSIFICATION
Big Delta (D6), 1965
Light-duty ————— Unimproved dirt - - - - -
○ State Route

BIG DELTA (D-6), ALASKA
N6445-W14630/15X30
1950
MINOR REVISIONS 1965

