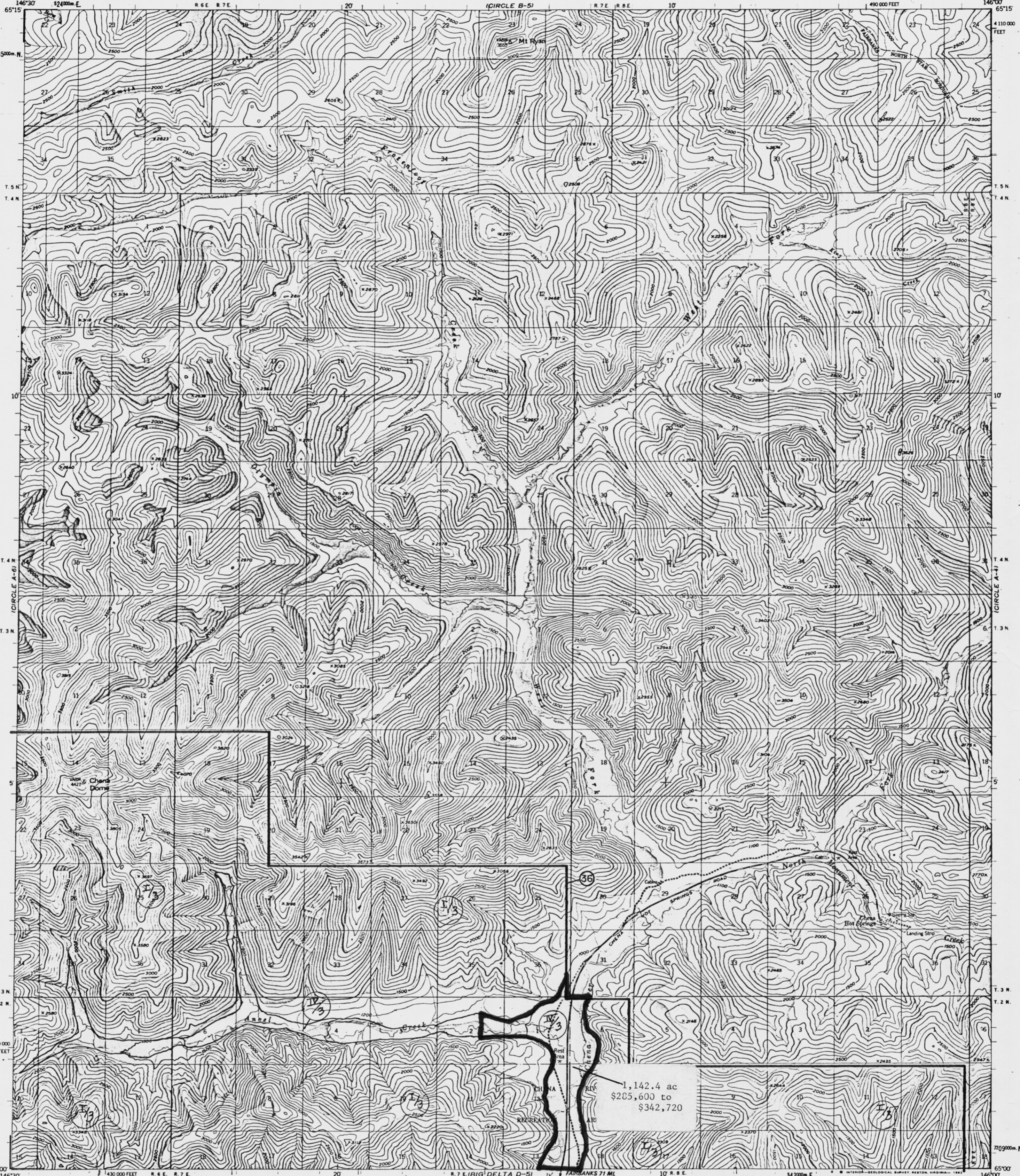


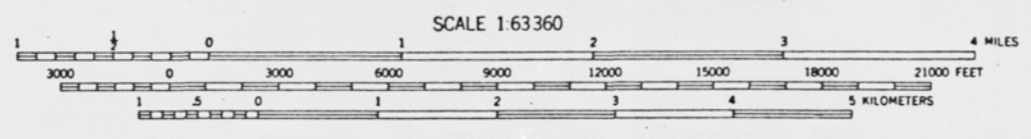
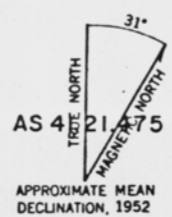
UNITED STATES  
DEPARTMENT OF THE INTERIOR  
GEOLOGICAL SURVEY

CIRCLE (A-5) QUADRANGLE  
ALASKA

1:63 360 SERIES (TOPOGRAPHIC)



Mapped, edited, and published by the Geological Survey  
Control by USGS and USC&GS  
Topography by photogrammetric methods from aerial photographs  
taken 1951.  
Universal Transverse Mercator projection, 1927 North American datum  
10,000 foot  
1000 meter  
zone 6, shown in blue  
Gray land lines represent unsurveyed and unmarked locations  
predetermined by the Bureau of Land Management.  
Folio F-7, Fairbanks Meridian  
To place on the predicted North American Datum 1983 move  
the projection lines 46 meters north and 115 meters east



SCALE 1:63 360  
CONTOUR INTERVAL 100 FEET  
NATIONAL GEODETIC VERTICAL DATUM OF 1929

FOR SALE BY U.S. GEOLOGICAL SURVEY  
FAIRBANKS, ALASKA 99701, DENVER, COLORADO 80225, OR RESTON, VIRGINIA 22092  
A FOLDER DESCRIBING TOPOGRAPHIC MAPS AND SYMBOLS IS AVAILABLE ON REQUEST



ROAD CLASSIFICATION (A5), 1981  
Light-duty ——— Unimproved dirt - - - - -

CIRCLE (A-5), ALASKA  
N6500-W14600/15X30

1952  
LIMITED REVISIONS 1981