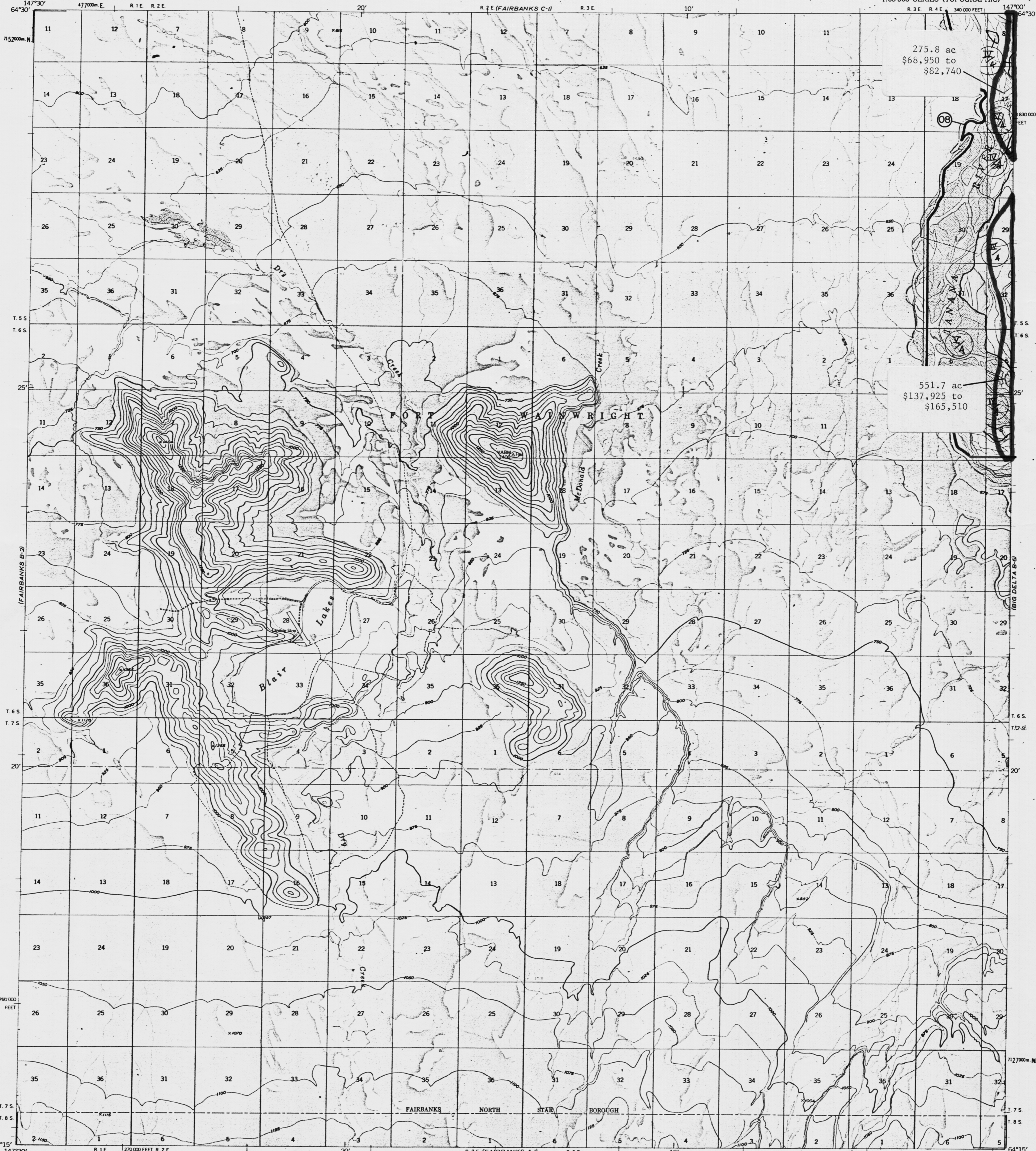


UNITED STATES
DEPARTMENT OF THE INTERIOR
GEOLOGICAL SURVEY

FAIRBANKS (B-1) QUADRANGLE
ALASKA
1:63 360 SERIES (TOPOGRAPHIC)



275.8 ac
\$66,950 to
\$82,740

551.7 ac
\$137,925 to
\$165,510

Mapped, edited, and published by the Geological Survey

Control by USGS and USC&GS

Topography by photogrammetric methods from aerial photographs taken 1949.

LEGISLATIVE DESIGNATED AREA

UNIVERSAL TRANSVERSE MERCATOR PROJECTION, 1927 NORTH AMERICAN DATUM

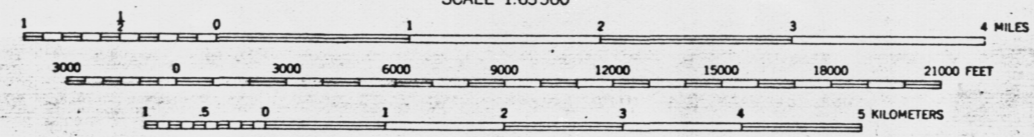
10,000 FOOT CONTOUR INTERVAL

1000 METER CONTOUR INTERVAL

LAND LINES REPRESENT UNSURVEYED AND UNMARKED LOCATIONS

SWAMPS, AS PORTRAYED, INDICATE ONLY THE WETTER AREAS, USUALLY OF LOW RELIEF, AS INTERPRETED FROM AERIAL PHOTOGRAPHS

Revisions shown in purple compiled from aerial photographs taken 1972. This information not field checked



SCALE 1:63360
CONTOUR INTERVAL 50 FEET
DOTTED LINES REPRESENT 25-FOOT CONTOURS
DATUM IS MEAN SEA LEVEL



FAIRBANKS (B1), 1972
ROAD CLASSIFICATION
Unimproved dirt

FAIRBANKS (B-1), ALASKA
N6415-W14700/15X30
1950

FOR SALE BY U. S. GEOLOGICAL SURVEY
FAIRBANKS, ALASKA 99701, DENVER, COLORADO 80225, OR WASHINGTON, D. C. 20242