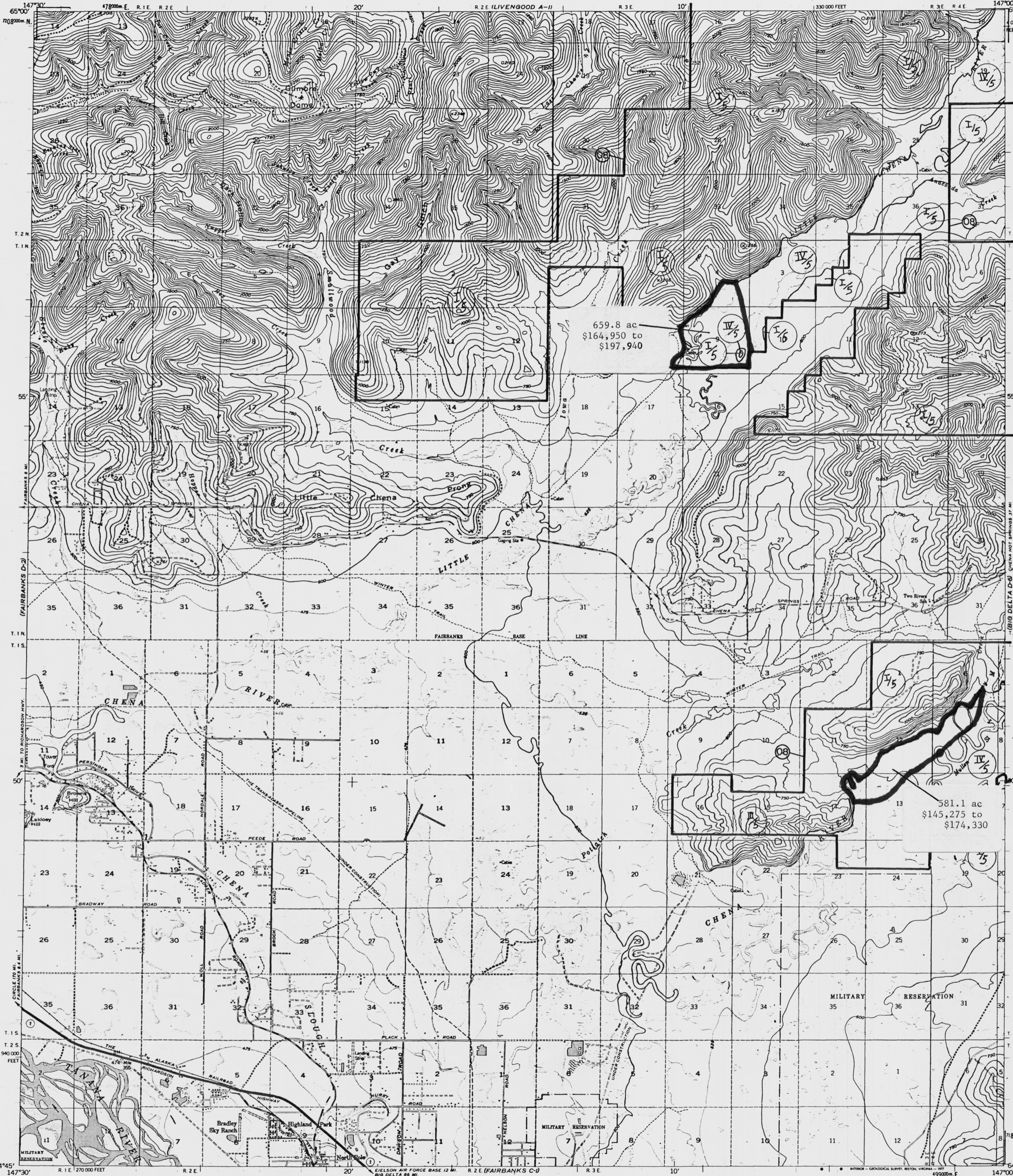


UNITED STATES
DEPARTMENT OF THE INTERIOR
GEOLOGICAL SURVEY

FAIRBANKS (D-1) QUADRANGLE
ALASKA-FAIRBANKS NORTH STAR BOROUGH
1:63 360 SERIES (TOPOGRAPHIC)



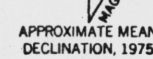
Mapped, edited, and published by the Geological Survey
Control by USGS and USC&GS

TOPOGRAPHIC DESIGNATED AREA
Topography by 1:63,360 scale from 1:250,000 scale
taken 1949. Map not field checked.

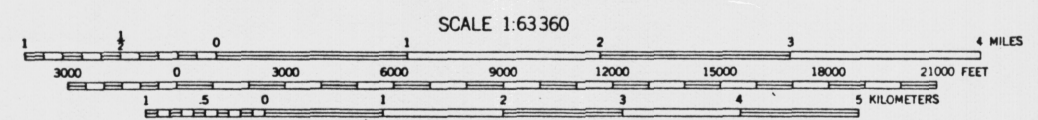
Universal Transverse Mercator projection, 1927 North American datum
10,000-foot base ANADAM coordinate system, 1983
1000-meter Universal Transverse Mercator grid ticks,
zone 6, shown in blue

Land lines printed in gray represent unsurveyed and
unmarked locations predetermined by the Bureau of
Land Management, Folios F-7, F-9, Fairbanks Meridian
Dashed red land lines indicate approximate locations
of existing ground surveys

Swamps, as portrayed, indicate only the wetter areas.



Revision shown in purple compiled from aerial photograph
taken 1972 and 1975. This information not field checked



CONTOUR INTERVAL 50 FEET
DOTTED LINES REPRESENT 25-FOOT CONTOURS
DATUM IS MEAN SEA LEVEL

ROAD CLASSIFICATION
FAIRBANKS (D-1), 1975
Heavy-duty Light-duty
Medium-duty Unimproved dirt
State Route



FOR SALE BY U.S. GEOLOGICAL SURVEY
FAIRBANKS, ALASKA 99701, DENVER, COLORADO 80225, OR RESTON, VIRGINIA 22092
A FOLDER DESCRIBING TOPOGRAPHIC MAPS AND SYMBOLS IS AVAILABLE ON REQUEST

FAIRBANKS (D-1), ALASKA
N6445-W14700/15X30

1949
PHOTOREVISED 1972 and 1975