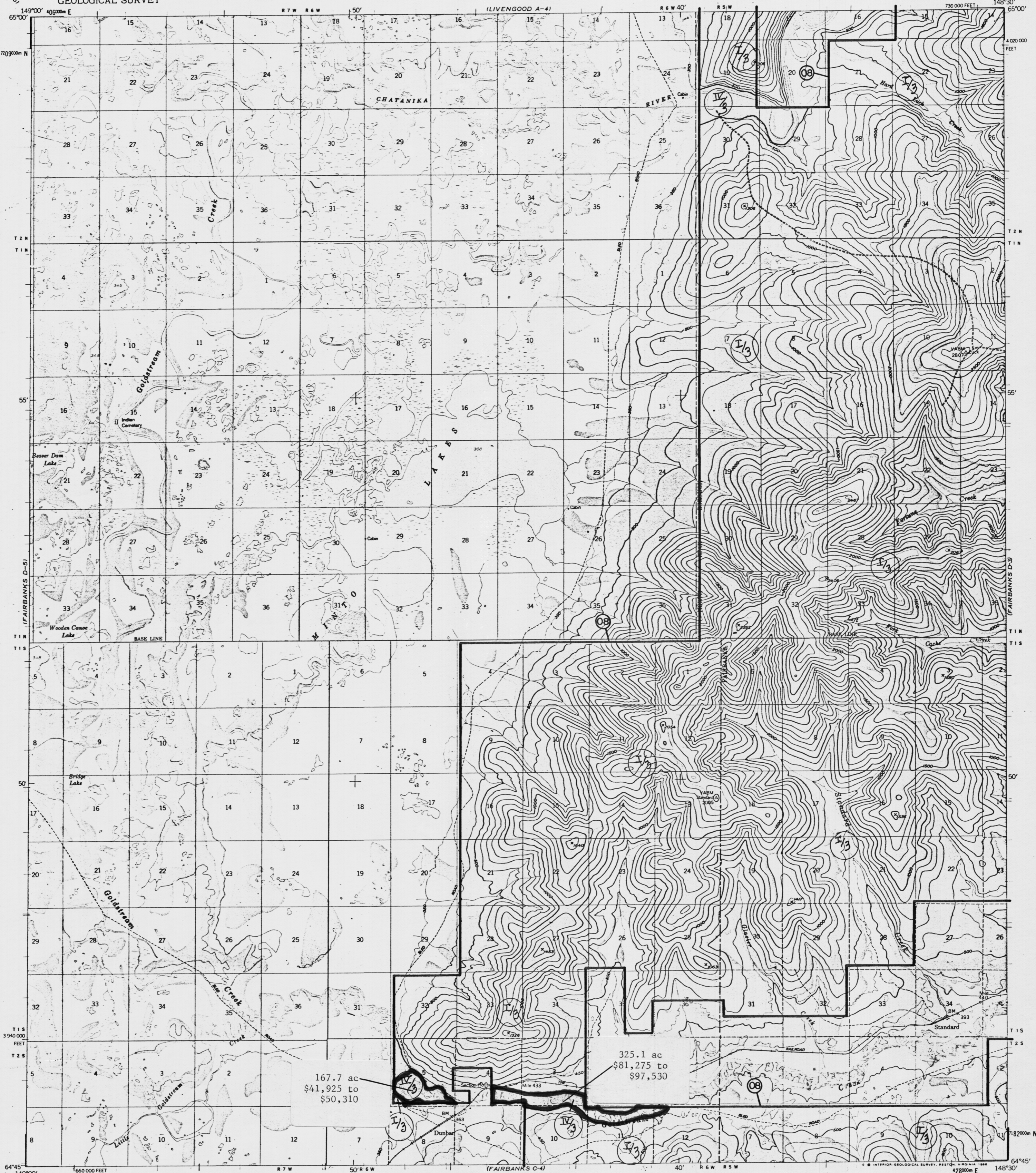


UNITED STATES  
DEPARTMENT OF THE INTERIOR  
GEOLOGICAL SURVEY

FAIRBANKS (D-4) QUADRANGLE  
ALASKA  
1:63 360 SERIES (TOPOGRAPHIC)



Mapped, edited, and published by the Geological Survey  
Control by USGS and NOS/NOAA

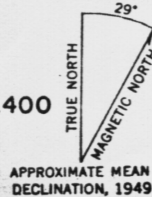
Topography by photogrammetric methods from aerial photographs  
taken 1949.

Projection and 1,000-meter grid ticks shown in blue:  
Universal Transverse Mercator, zone 6  
10,000-foot (3048 m) grid

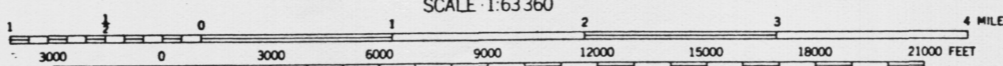
To place on the predicted North American Datum 1983 move  
the projection lines 52 meters north and 117 meters east

Gray land lines represent unsurveyed and unmarked locations  
predetermined by the Bureau of Land Management  
Folios F-6 and F-10, Fairbanks Meridian

Swamps as portrayed, indicate only the wetter areas.



APPROXIMATE MEAN  
DECLINATION, 1949



CONTOUR INTERVAL 100 FEET  
DOTTED LINES REPRESENT 50-FOOT CONTOURS  
NATIONAL GEODETIC VERTICAL DATUM OF 1929

FOR SALE BY U. S. GEOLOGICAL SURVEY  
FAIRBANKS, ALASKA 99701, DENVER, COLORADO 80225, OR RESTON, VIRGINIA 22092  
A FOLDER DESCRIBING TOPOGRAPHIC MAPS AND SYMBOLS IS AVAILABLE ON REQUEST



QUADRANGLE LOCATION

FAIRBANKS (D-4) 1986  
Unimproved dirt -----

FAIRBANKS (D-4), ALASKA  
64148-G5-TF-063  
1949