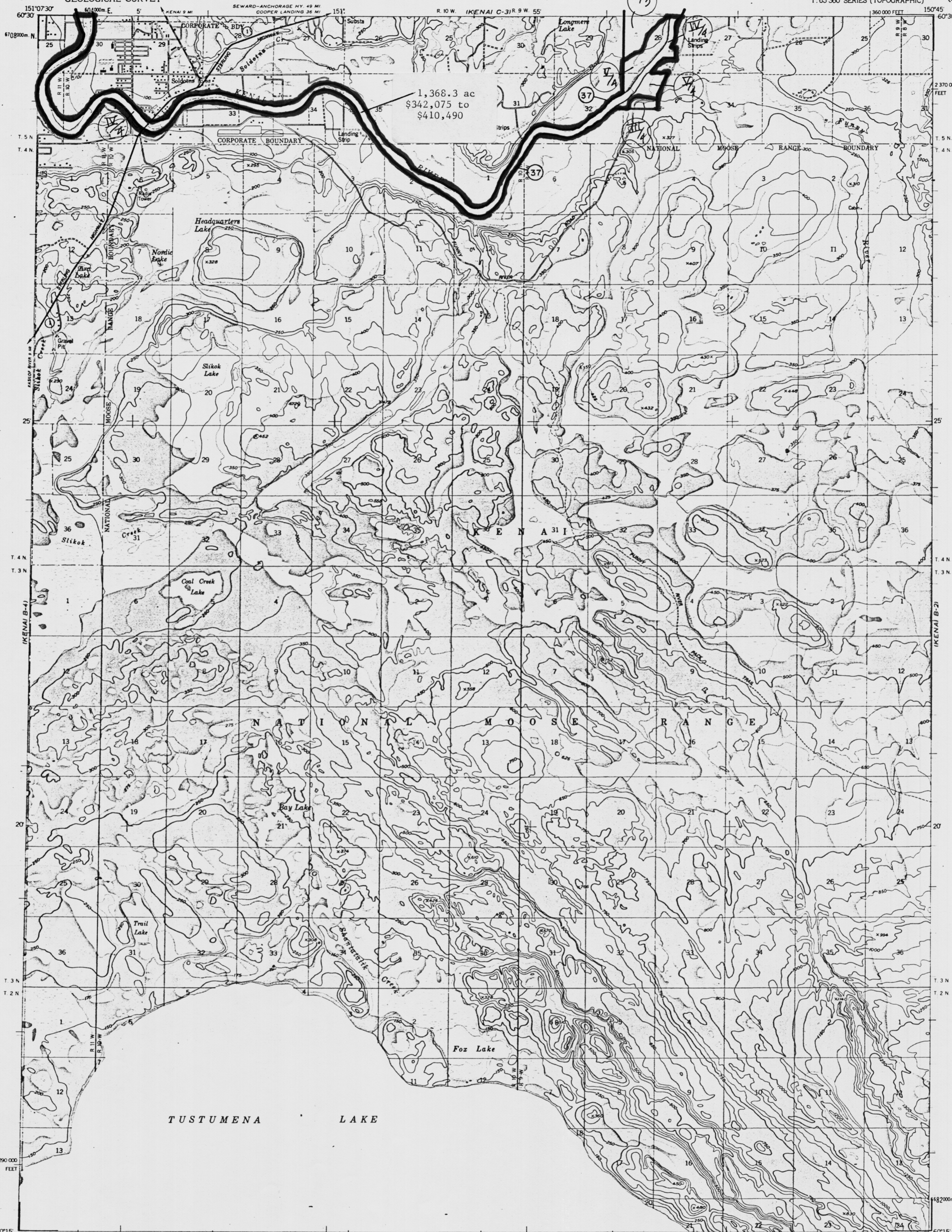


UNITED STATES  
DEPARTMENT OF THE INTERIOR  
GEOLOGICAL SURVEY

KENAI (B-3) QUADRANGLE  
ALASKA-KENAI PENINSULA BOROUGH  
1:63 360 SERIES (TOPOGRAPHIC)



Mapped, edited, and published by the Geological Survey  
Control by USFWS and USFS  
Topography by photogrammetric methods from aerial photographs taken 1950. Contour interval 50 feet. Part from aerial photographs field annotated 1950. Kenai field sketcher SPECIAL MANAGEMENT AREA AS 41-21-502-514  
Universal Transverse Mercator projection. 1927 North American Datum 10,000-foot grid ticks based on Alaska coordinate system, zone 4 1000-meter Universal Transverse Mercator grid ticks, zone 5, shown in blue  
Gray land lines represent unsurveyed and unmarked locations predetermined by the Bureau of Land Management  
Folio S-16, Seward Meridian  
Swamps, as portrayed, indicate only the wetter areas, usually of low relief, as interpreted from aerial photographs

**LEGISLATIVE DESIGNATED AREA**  
1,368.3 ac  
\$342,075 to \$410,490

SCALE 1:63 360  
3000 0 3000 6000 9000 12000 15000 18000 21000 FEET  
1 2 3 4 5 KILOMETERS  
CONTOUR INTERVAL 50 FEET  
DOTTED LINES REPRESENT 25-FOOT CONTOURS  
NATIONAL GEODETIC VERTICAL DATUM OF 1929  
UTM GRID AND 1980 MAGNETIC NORTH DECLINATION AT CENTER OF SHEET  
1° 48' 24" 4.26 MILS  
32 MILS

ROAD CLASSIFICATION  
Heavy-duty ——— KENAI (B-3)-1980  
Medium-duty ——— Unimproved dirt  
Trails - - - - -  
State Route ○  
KENAI (B-3) ALASKA  
N6015-W15045/15X22.5  
1950  
LIMITED REVISIONS 1980

FOR SALE BY U.S. GEOLOGICAL SURVEY  
FAIRBANKS, ALASKA 99701, DENVER, COLORADO 80225, OR RESTON, VIRGINIA 22092  
A FOLDER DESCRIBING TOPOGRAPHIC MAPS AND SYMBOLS IS AVAILABLE ON REQUEST

