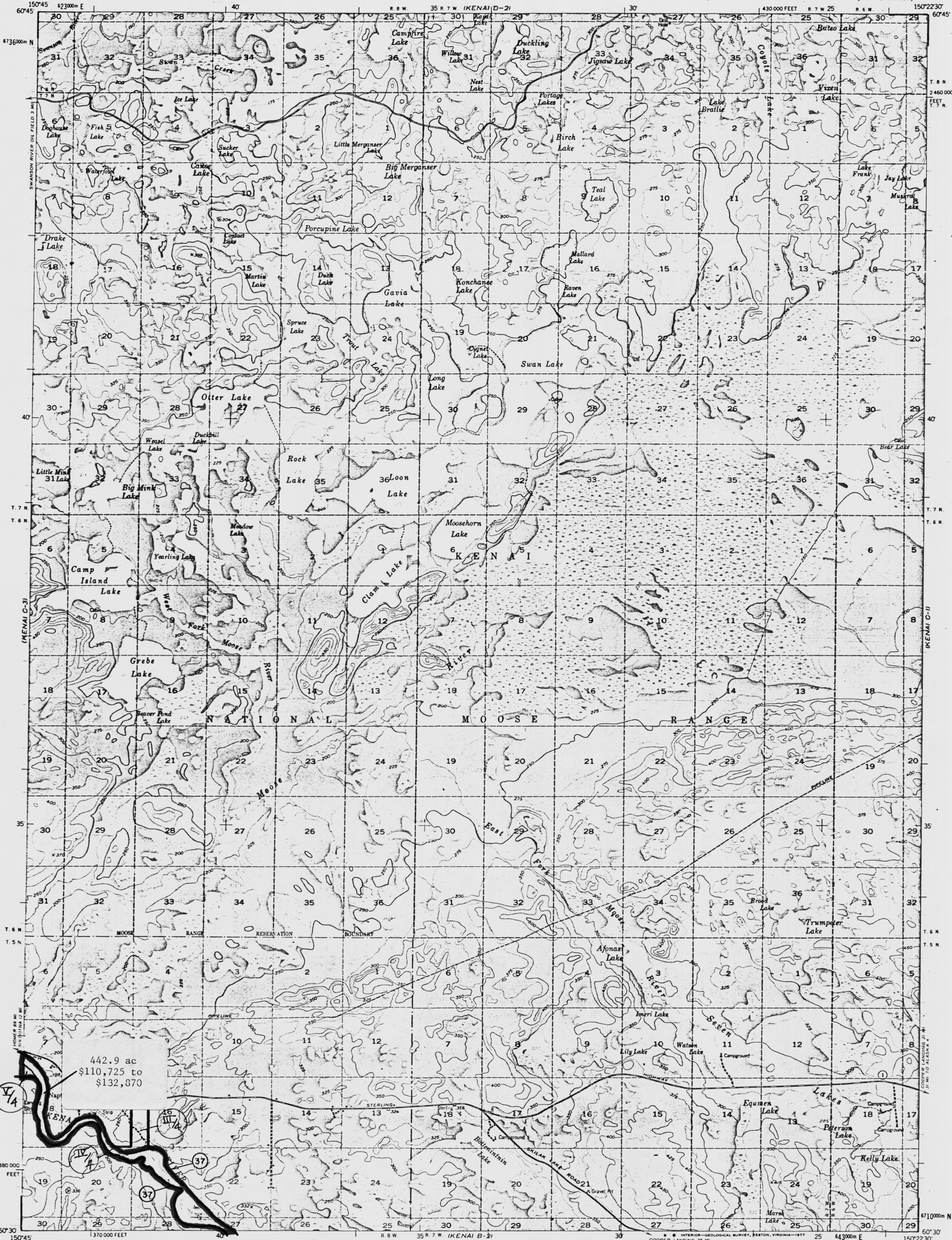


UNITED STATES  
DEPARTMENT OF THE INTERIOR  
GEOLOGICAL SURVEY

KENAI (C-2) QUADRANGLE  
ALASKA-KENAI PENINSULA BOROUGH  
1:63 360 SERIES (TOPOGRAPHIC)



442.9 ac  
\$110,725 to  
\$132,870

Mapped, edited, and published by the Geological Survey

Control by USGS  
Topography by photogrammetric methods from aerial photographs taken 1950. (Revised 1951. Map not field checked)  
Universal Transverse Mercator projection, 1927 North American datum  
10,000 foot grid based on Alaska coordinate system, zone 4  
1000-meter Universal Transverse Mercator grid ticks, zone 5, shown in blue  
Gray land lines represent unsurveyed and unmarked locations predetermined by the Bureau of Land Management  
Folio S 16, Seward Meridian  
Swamps, as portrayed, indicate only the wetter areas, usually of low relief, as interpreted from aerial photographs

**LEGISLATIVE DESIGNATED AREA**  
**(37) KENAI RIVER SPECIAL MANAGEMENT AREA**  
AS 41.21.502-514  
APPROXIMATE MEAN DECLINATION, 1951

SCALE 1:63360  
0 1 2 3 4 MILES  
0 3000 6000 9000 12000 15000 18000 21000 FEET  
0 1 2 3 4 5 KILOMETERS  
CONTOUR INTERVAL 50 FEET  
DOTTED LINES REPRESENT 25-FOOT CONTOURS  
NATIONAL GEODETIC VERTICAL DATUM OF 1929  
FOR SALE BY U.S. GEOLOGICAL SURVEY  
FAIRBANKS, ALASKA 99701, DENVER, COLORADO 80225, OR RESTON, VIRGINIA 22092  
A FOLDER DESCRIBING TOPOGRAPHIC MAPS AND SYMBOLS IS AVAILABLE ON REQUEST

ROAD CLASSIFICATION  
Medium-duty ——— KENAI (C-2) 1975  
Unimproved dirt - - - - -  
State Route ○  
KENAI (C-2) ALASKA  
N6030-W15022.5/15X22.5  
1951  
Scott (1982)

