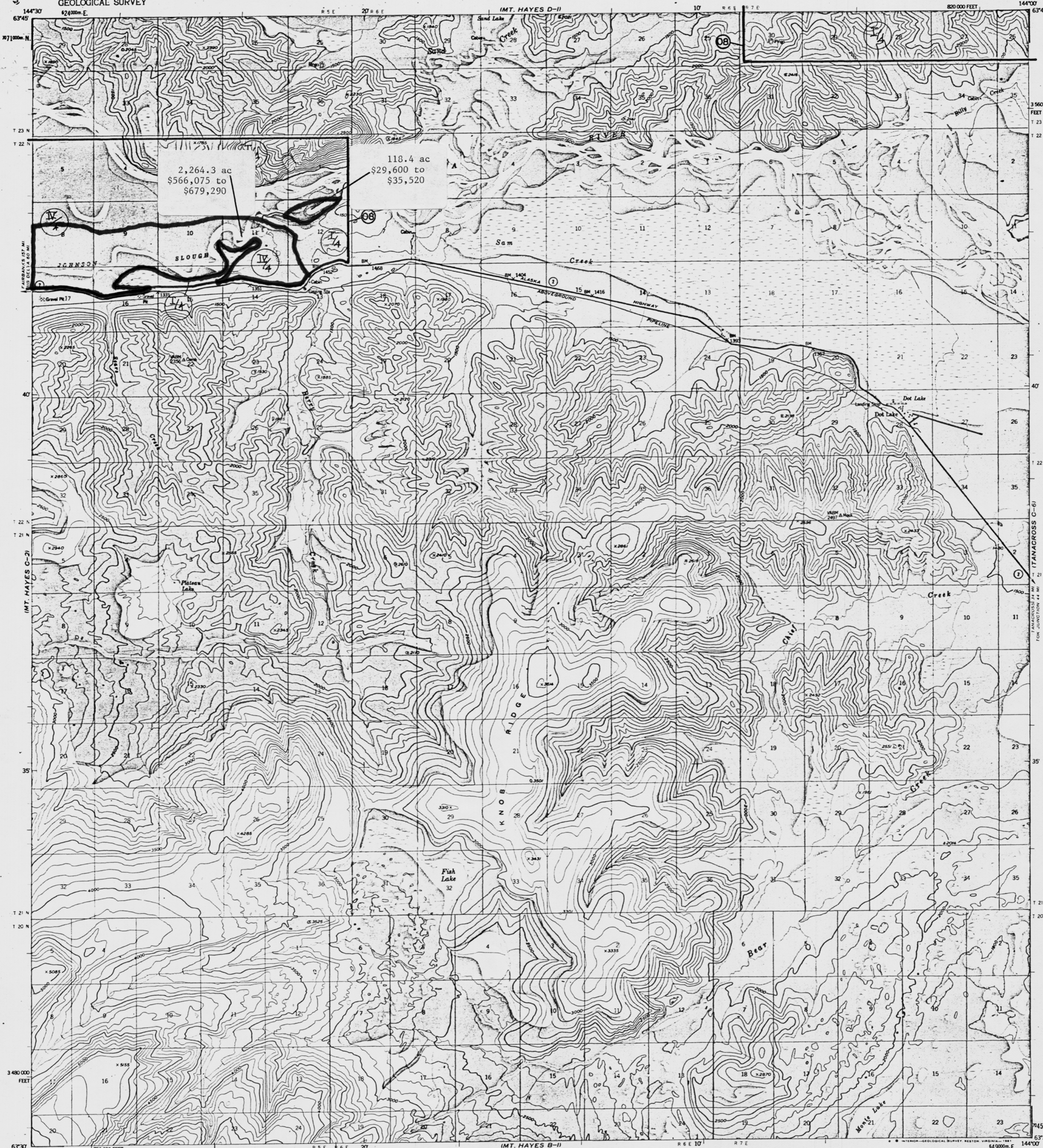


UNITED STATES
DEPARTMENT OF THE INTERIOR
GEOLOGICAL SURVEY

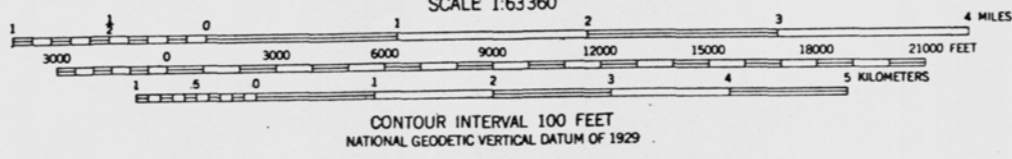
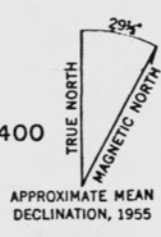
MT. HAYES (C-1) QUADRANGLE
ALASKA
1:63 360 SERIES (TOPOGRAPHIC)



2,264.3 ac
\$566,075 to
\$679,290

118.4 ac
\$29,600 to
\$35,520

Mapped, edited, and published by the Geological Survey
Control by USGS and NOS/NOAA
Topography by photogrammetric methods from aerial photographs
taken 1954, 1955, and 1956
LEGISLATIVE DESIGNATED AREA
Universal Transverse Mercator projection, 1927 North American datum
10,000-foot grid based on Alaska coordinate system zone 2
1000-meter contour interval
Gray land lines represent unsurveyed and unmarked locations determined by the Bureau of Land Management, Folio CR-1, Copper River Meridian
Swamps, as portrayed, indicate only the wetter areas, usually of low relief, as interpreted from aerial photographs



FOR SALE BY U.S. GEOLOGICAL SURVEY
FAIRBANKS, ALASKA 99701, DENVER, COLORADO 80225, OR RESTON, VIRGINIA 22092
A FOLDER DESCRIBING TOPOGRAPHIC MAPS AND SYMBOLS IS AVAILABLE ON REQUEST

MT. HAYES (C-1), ALASKA
N6330-W14400/15X30

1955
MINOR REVISIONS 1979