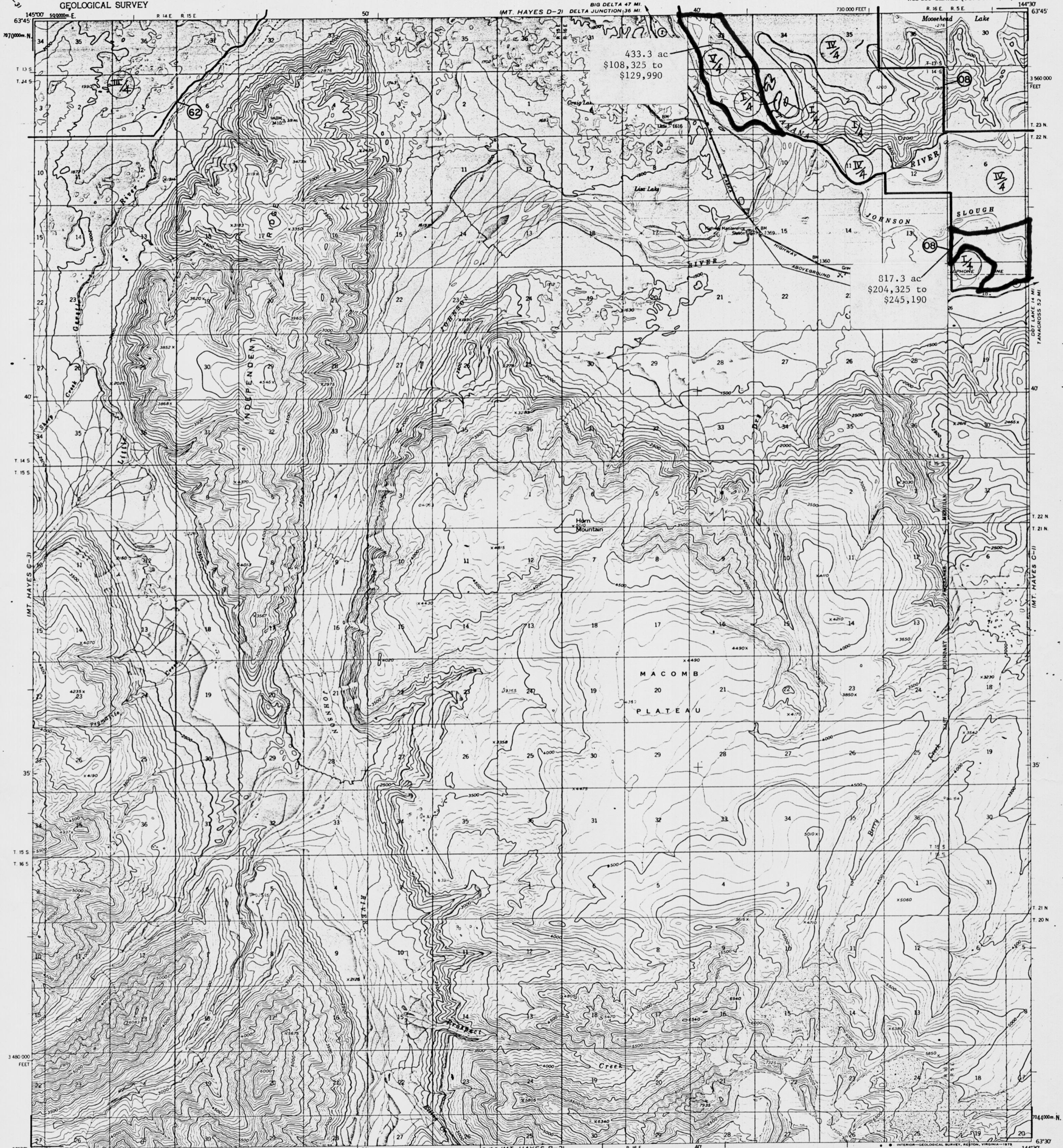


UNITED STATES
DEPARTMENT OF THE INTERIOR
GEOLOGICAL SURVEY

MT. HAYES (C-2) QUADRANGLE
ALASKA
1:63 360 SERIES (TOPOGRAPHIC)



Mapped, edited, and published by the Geological Survey
Control by USGS and NOS/NOAA

Topography by photogrammetric methods from aerial photographs
taken 1954. LEGISLATIVE DESIGNATED AREA

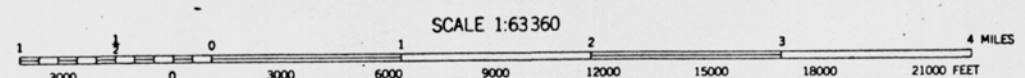
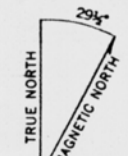
Universal Transverse Mercator projection, 1927 North American datum
10,000 feet interval

62 TANANA VALLEY STATE FOREST AS 41.17.400

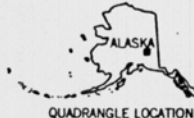
1000-metre interval Universal Transverse Mercator grid ticks,
zone 6, shown in blue

62 DELTA JUNCTION BISON RANGE AREA AS 16.20.300

Gray land boundaries predetermined by the Bureau of
Land Management, Folios CR-1 and F-9, Copper River Meridian
and Fairbanks Meridian



SCALE 1:63 360
CONTOUR INTERVAL 100 FEET
NATIONAL GEODETIC VERTICAL DATUM OF 1929



ROAD CLASH HAYES (C2), 1973
Medium-duty Light-duty
State Route

MT. HAYES (C-2), ALASKA
N6330-W14430/15X30

FOR SALE BY U.S. GEOLOGICAL SURVEY
FAIRBANKS, ALASKA 99701, DENVER, COLORADO 80225, OR RESTON, VIRGINIA 22092