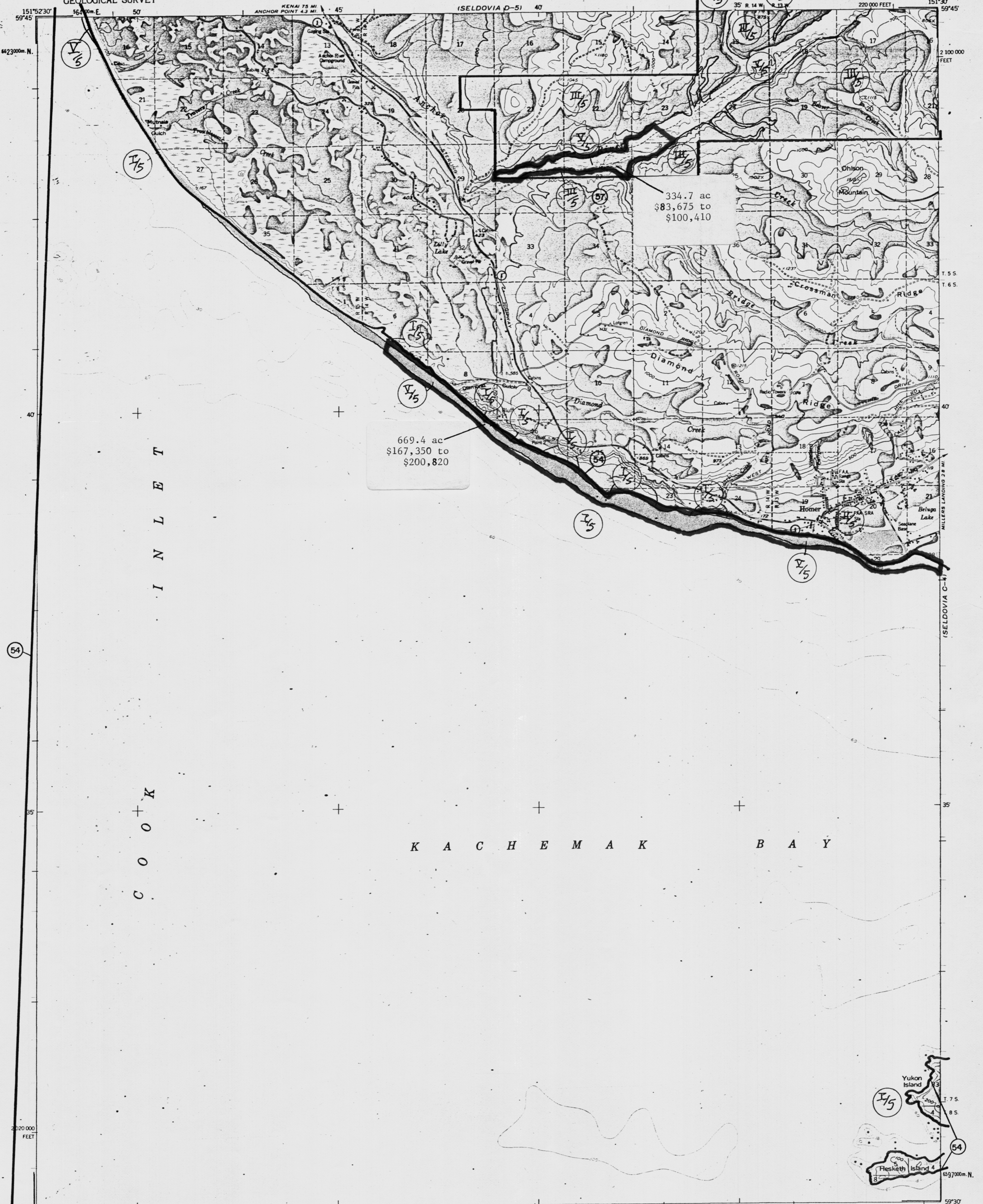


UNITED STATES
DEPARTMENT OF THE INTERIOR
GEOLOGICAL SURVEY

SELDOVIA (C-5) QUADRANGLE
ALASKA-KENAI PENINSULA BOROUGH
1:63360 SERIES (TOPOGRAPHIC)



C O O K
I N L E T

K A C H E M A K B A Y

Mapped, edited, and published by the Geological Survey
Control by USGS, USC&GS, and USCE

Topography by photogrammetric methods from aerial photographs taken 1951-1952; fields annotated 1961. Map not field checked. Selected hydrographic data compiled from USC&GS Charts 8531 (1959) and 8554 (1:200,000 scale, 1959). This information is not intended for navigation.

Universal Transverse Mercator projection, 1927 North American datum

10,000-foot grid based on Alaska coordinate system, zone 4

1000-meter UTM grid based on Alaska coordinate system, zone 5, shown in blue

Gray land lines represent unsurveyed and unmarked locations predetermined by the Bureau of Land Management

LEGISLATIVE DESIGNATED AREA
ANCHOR RIVER & FRITZ CREEK CRITICAL HABITAT AREA AS 16.20.230
KACHEMAK BAY CRITICAL HABITAT AREA AS 16.20.230

CONTOUR INTERVAL 100 FEET
NATIONAL GEODETIC VERTICAL DATUM OF 1929
DEPTH CURVES IN FEET-DATUM IS MEAN LOWER LOW WATER
SHORELINE SHOWN REPRESENTS THE APPROXIMATE LINE OF MEAN HIGH WATER
THE MEAN RANGE OF TIDE IS APPROXIMATELY 15 FEET

FOR SALE BY U.S. GEOLOGICAL SURVEY
FAIRBANKS, ALASKA 99701. DENVER, COLORADO 80225. OR RESTON, VIRGINIA 22092
A FOLDER DESCRIBING TOPOGRAPHIC MAPS AND SYMBOLS IS AVAILABLE ON REQUEST

ROAD CLASSIFICATION
Medium-duty Light-duty
Unimproved dirt
Slate Route

SELDOVIA (C-5) 1977

SELDOVIA (C-5), ALASKA
N5930-W15130/15X22.5

1961
LIMITED REVISIONS 1977

QUADRANGLE LOCATION