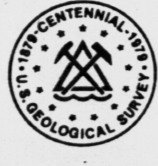
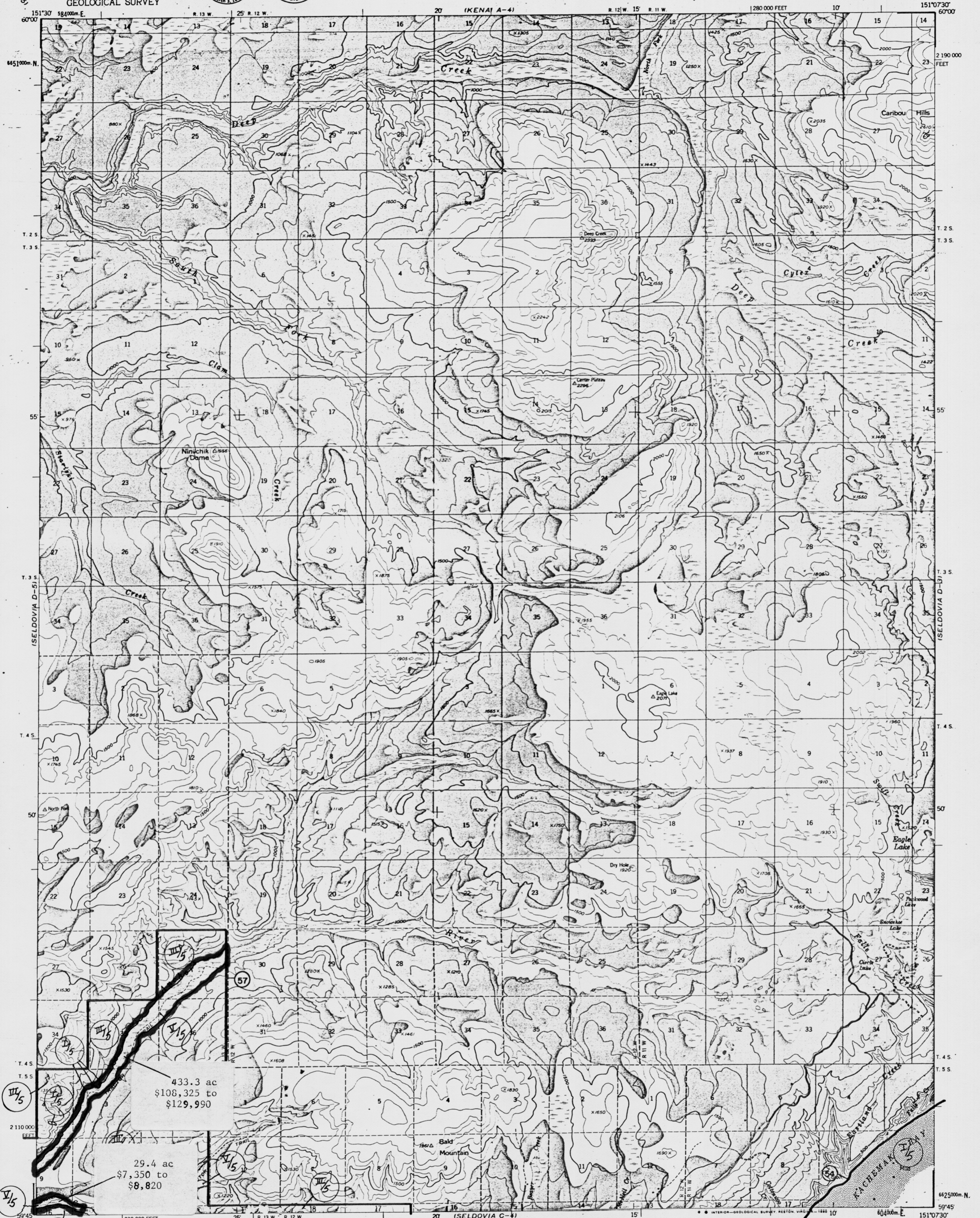


UNITED STATES  
DEPARTMENT OF THE INTERIOR  
GEOLOGICAL SURVEY

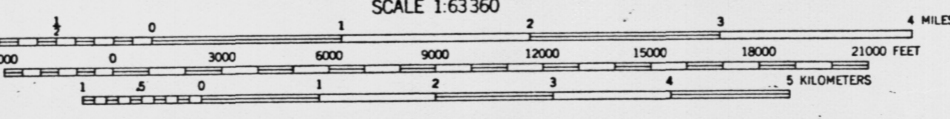


SELDOVIA (D-4) QUADRANGLE  
ALASKA-KENAI PENINSULA BOROUGH  
1:63,360 SERIES (TOPOGRAPHIC)



Map prepared, and published by the Geological Survey  
Control by USGS and USCE  
Topography by photogrammetric methods from aerial photographs  
taken 1954-55  
**LEGISLATIVE DESIGNATED AREA**  
Selected hydrographic data compiled from USC&GS Charts  
8531 (1:62,500) and 8532 (1:62,500)  
This information is not intended for navigational purposes  
Universal Transverse Mercator projection, 1927 North American datum  
10,000-foot grid  
1000-meter Universal Transverse Mercator grid ticks,  
zone 5, shown in blue  
Gray land lines represent unsurveyed and unmarked locations

**CRITICAL HABITAT AREA**  
S 16.20.230  
ANCHOR RIVER & FRITZ CREEK  
APPROXIMATE MEAN  
DECLINATION, 1961



CONTOUR INTERVAL 100 FEET  
NATIONAL GEODETIC VERTICAL DATUM OF 1929  
SHORELINE SHOWN REPRESENTS THE APPROXIMATE LINE OF MEAN HIGH WATER  
THE MEAN RANGE OF TIDE IS APPROXIMATELY 16 FEET

ROAD CLASSIFICATION  
Light-duty SELDOVIA (D4) 1978.

FOR SALE BY U.S. GEOLOGICAL SURVEY  
FAIRBANKS, ALASKA 99701, DENVER, COLORADO 80225, OR RESTON, VIRGINIA 22092  
A FOLDER DESCRIBING TOPOGRAPHIC MAPS AND SYMBOLS IS AVAILABLE ON REQUEST

SELDOVIA (D-4), ALASKA  
N5945-W15107.5/15X22.5  
1961