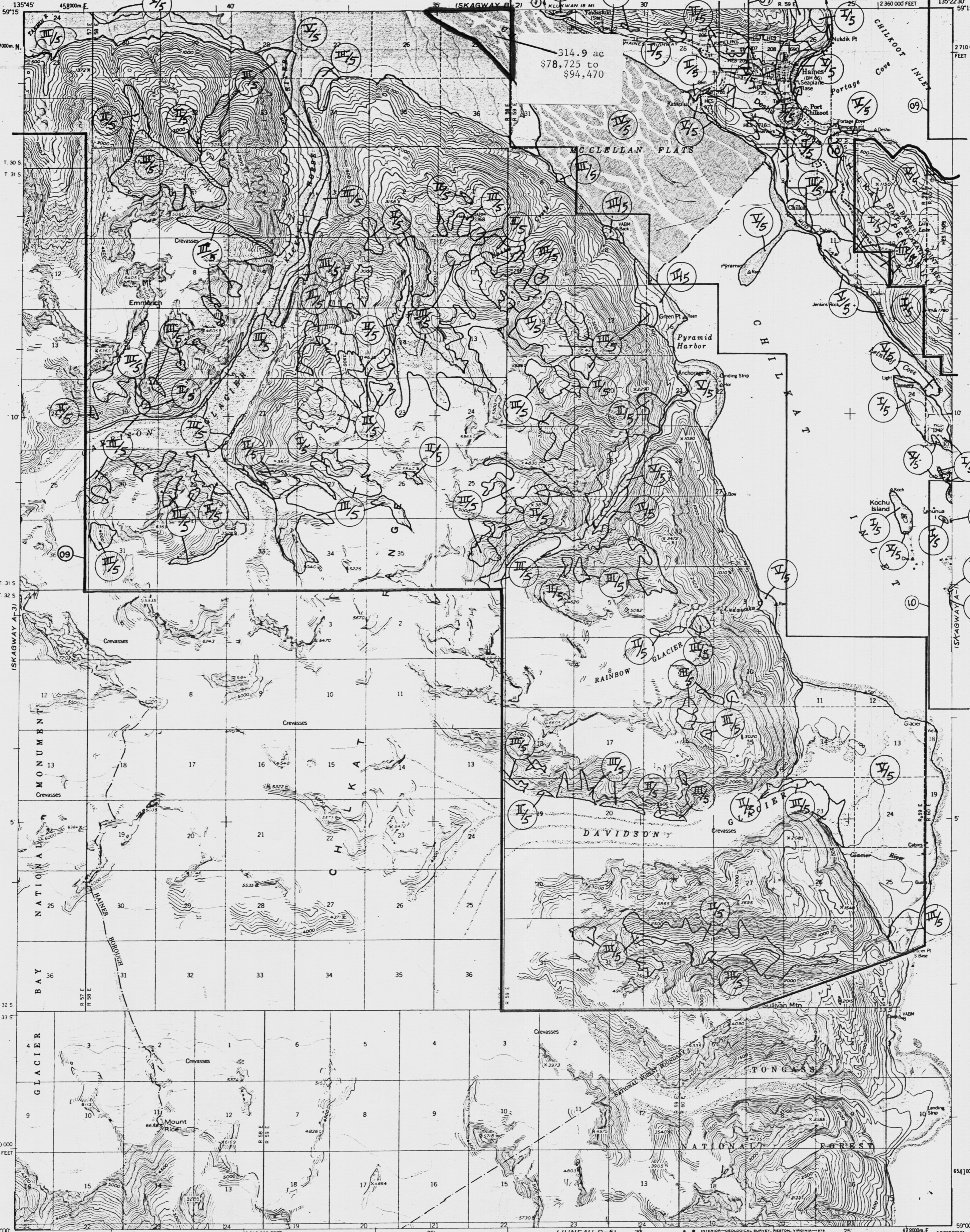


UNITED STATES  
DEPARTMENT OF THE INTERIOR  
GEOLOGICAL SURVEY

SKAGWAY (A-2) QUADRANGLE  
ALASKA  
1:63 360 SERIES (TOPOGRAPHIC)



314.9 ac  
\$78,725 to  
\$94,470

Mapped, edited, and published by the Geological Survey

Control by USGS and AS 41.15

Topography by photogrammetric methods from aerial photographs

taken 1948

Selected hydrographic data compiled from USCGS

Chart 8363

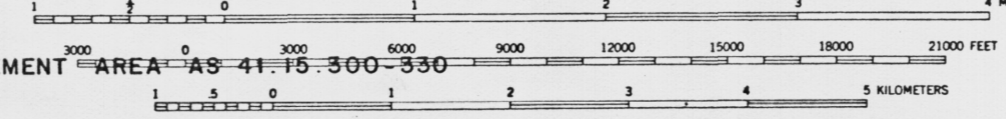
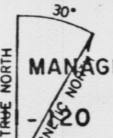
Universal Transverse Mercator projection, 1927 North American datum

10,000-foot grid based on Alaska coordinate system, zone 1

1000-meter Universal Transverse Mercator grid ticks, zone 8, shown in blue

Gray land lines represent unsurveyed and unmarked locations

predetermined by the State of Alaska, Division of Lands



CONTOUR INTERVAL 100 FEET  
NATIONAL GEODETIC VERTICAL DATUM OF 1929  
DEPTH CURVES IN FEET-DATUM IS MEAN LOWER LOW WATER  
SHORELINE SHOWN REPRESENTS THE APPROXIMATE LINE OF MEAN HIGH WATER  
THE MEAN RANGE OF TIDE IS APPROXIMATELY 11 FEET



ROAD CLASSIFICATION  
SKAGWAY (A-2) 1977

Medium-duty Light-duty

Unimproved dirt

State Route

SKAGWAY (A-2), ALASKA  
N5900-W13522.5/15X22.5

1954

FOR SALE BY U.S. GEOLOGICAL SURVEY  
FAIRBANKS, ALASKA 99701 DENVER, COLORADO 80225 OR RESTON, VIRGINIA 22092