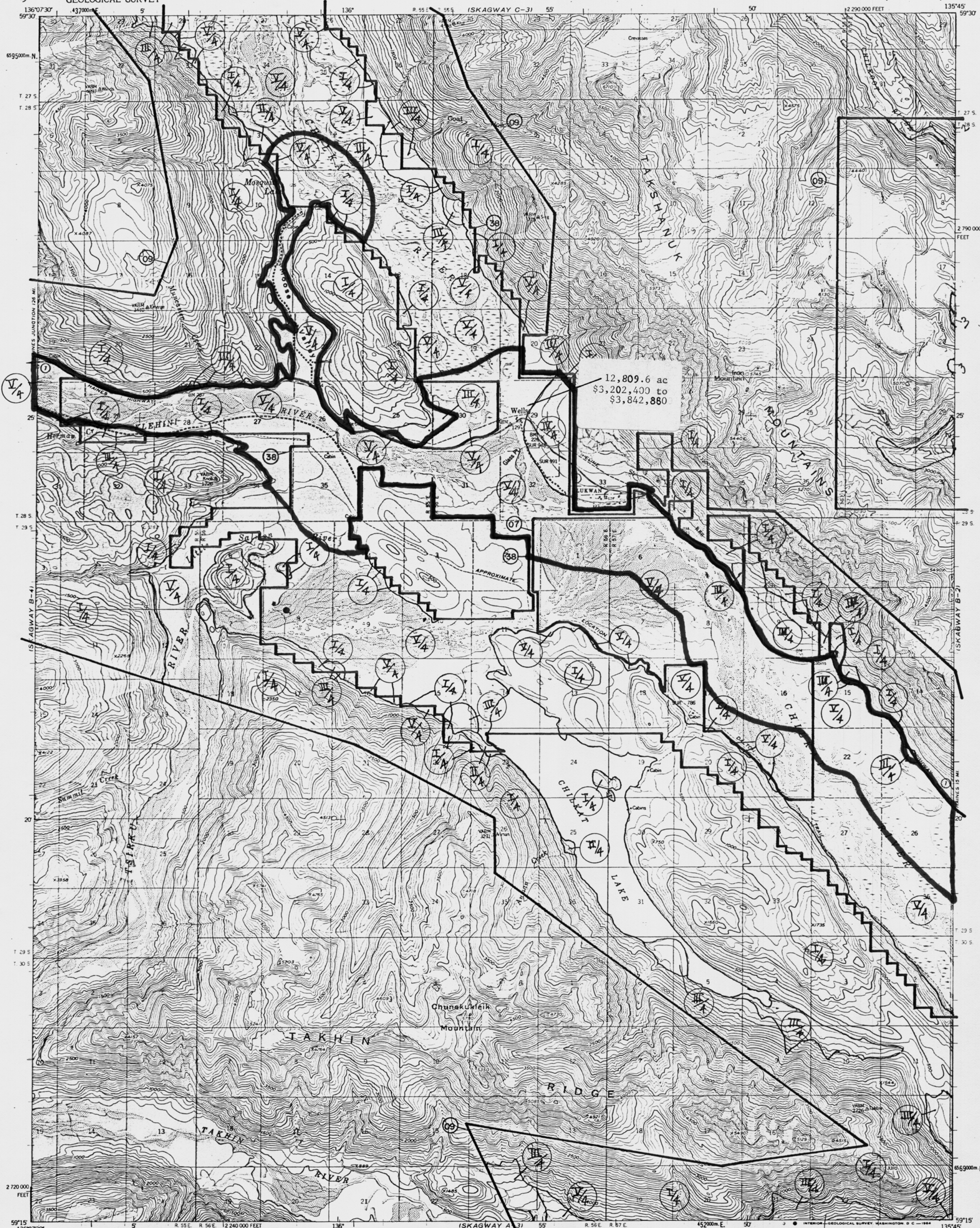


UNITED STATES  
DEPARTMENT OF THE INTERIOR  
GEOLOGICAL SURVEY

SKAGWAY (B-3) QUADRANGLE  
ALASKA  
1:63,360 SERIES (TOPOGRAPHIC)



Mapped, edited, and published by the Geological Survey

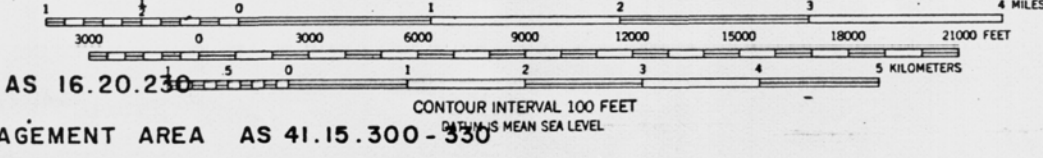
Control by USGS, USC&GS, and Geodetic Survey of Canada  
Topography by photogrammetric methods from aerial photographs  
taken 1948 and annotated 1954. Map not field checked.

Universal Transverse Mercator projection, 1927 North American datum  
10,000-foot grid based on Alaska coordinate system, zone 1  
1000-meter grid based on Transverse Mercator, zone 8, shown in blue

Land lines shown in black  
Locations predetermined by the State of Alaska, Division of Lands  
Copper River Meridian

Swamps, as portrayed, indicate only the wetter areas,  
usually of low relief, as interpreted from aerial photographs

**LEGISLATIVE DESIGNATED AREA**  
**(07) CHILKAT RIVER STATE HABITAT AREA AS 16.20.230**  
**(09) TAHAINES STATE FOREST RESOURCE MANAGEMENT AREA AS 41.15.300 - 330**  
**(38) ALASKA CHILKAT BALD EAGLE RESERVE AS 41.21.611 - 630**



ROAD CLASSIFICATION  
**SKAGWAY (B-3) 1963**  
Medium-duty  
Unimproved dirt  
State Route



SKAGWAY (B-3), ALASKA  
N5915-W13545/15x22.5

FOR SALE BY U.S. GEOLOGICAL SURVEY  
FAIRBANKS, ALASKA DENVER 25, COLORADO WASHINGTON 25, D.C.  
A FOLDER DESCRIBING TOPOGRAPHIC MAPS AND SYMBOLS IS AVAILABLE ON REQUEST