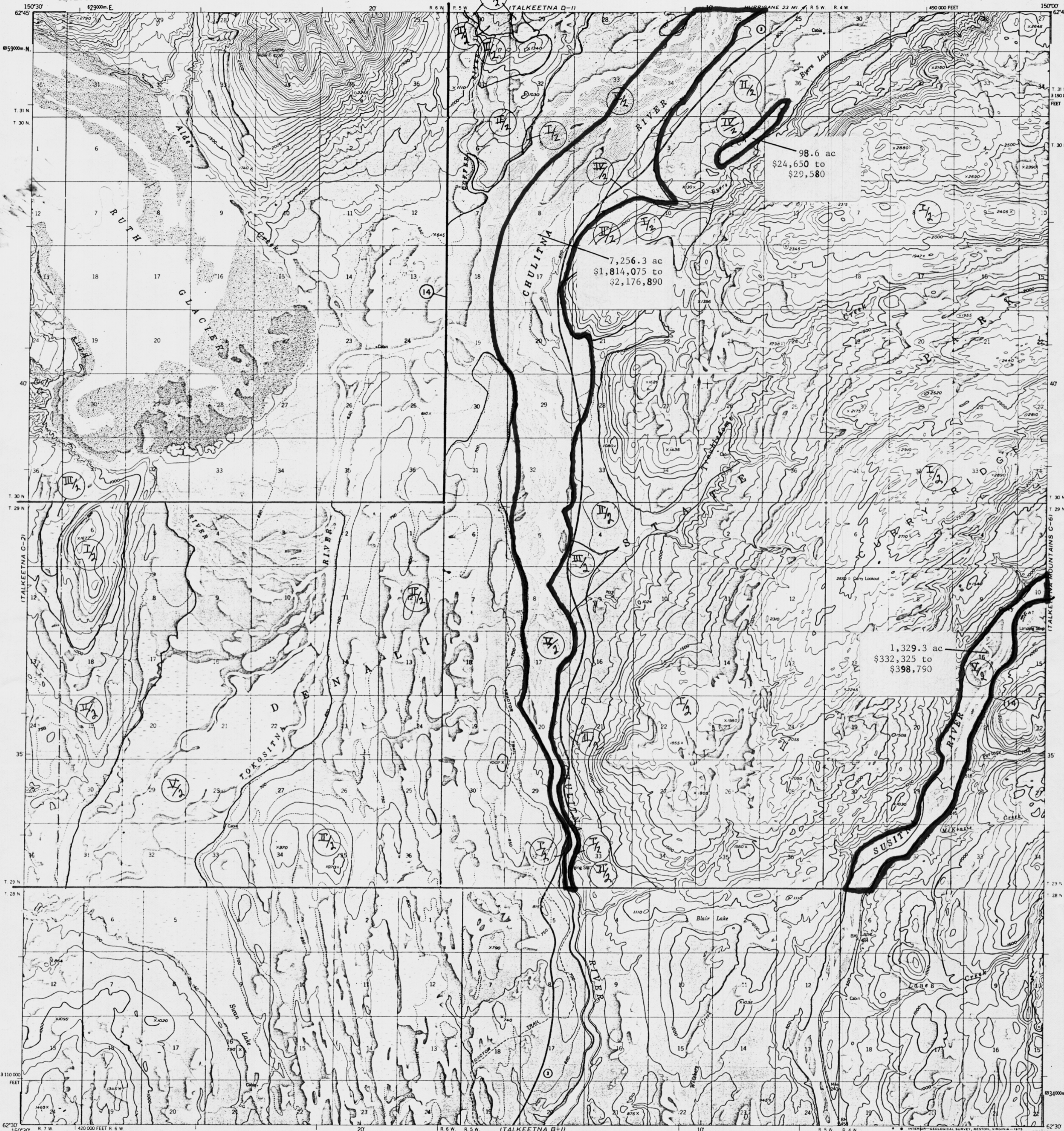


UNITED STATES  
DEPARTMENT OF THE INTERIOR  
GEOLOGICAL SURVEY

TALKEETNA (C-1) QUADRANGLE  
ALASKA-MATANUSKA-SUSITNA BOROUGH  
1:63 360 SERIES (TOPOGRAPHIC)

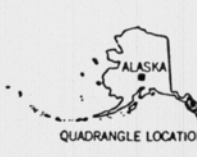
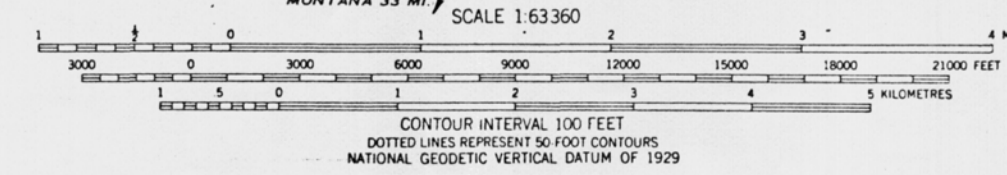
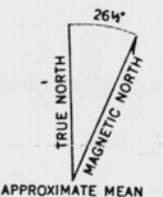


98.6 ac  
\$24,650 to  
\$29,580

7,256.3 ac  
\$1,814,075 to  
\$2,176,890

1,329.3 ac  
\$332,325 to  
\$398,790

Mapped, edited, and published by the Geological Survey  
Control by USGS and NOS/NOAA  
Topography by photogrammetric methods from aerial photographs  
taken 1951  
**LEGISLATIVE DESIGNATED AREA**  
Universal Transverse Mercator projection, 1927 North American datum  
10,000 feet  
**10 DENALI STATE PARK AS 41.21.151-152**  
1000 meters  
Gray land lines represent unsurveyed and unmarked locations predetermined by the Bureau of Land Management. Folio S-2, Seward Meridian  
Swamps, as portrayed, indicate only the wetter areas.  
Usualty of low relief, as interpreted from aerial photographs



TALKEETNA (C-1) 1974  
Medium-duty  
State Route

FOR SALE BY U.S. GEOLOGICAL SURVEY  
FAIRBANKS, ALASKA 99701, DENVER, COLORADO 80225, OR RESTON, VIRGINIA 22092  
A FOLDER DESCRIBING TOPOGRAPHIC MAPS AND SYMBOLS IS AVAILABLE ON REQUEST

TALKEETNA (C-1), ALASKA  
N6230-W15000/15X30