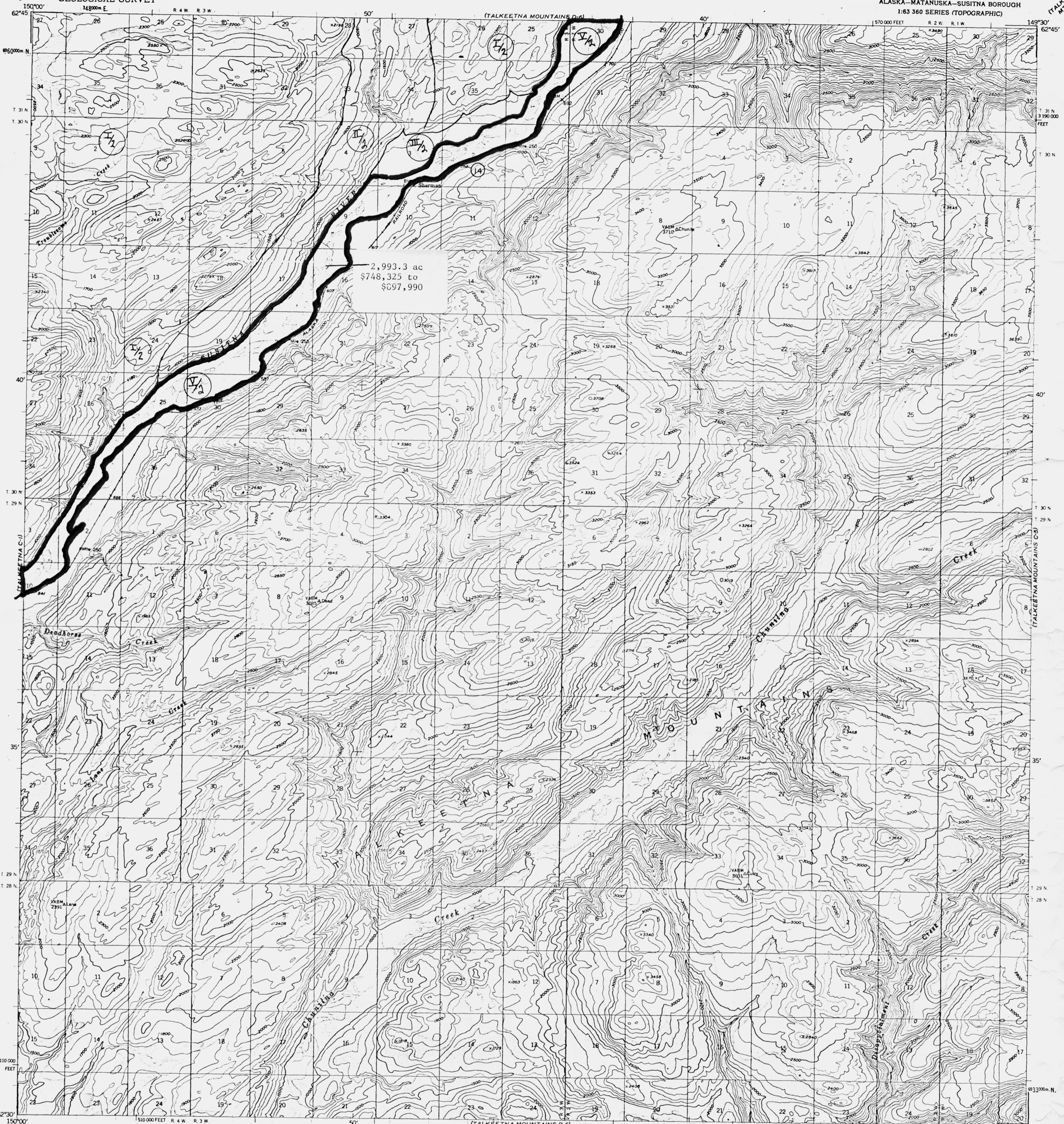


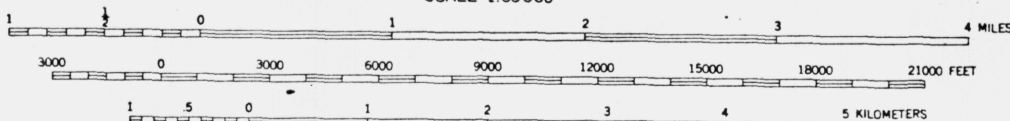
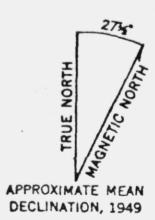
UNITED STATES  
DEPARTMENT OF THE INTERIOR  
GEOLOGICAL SURVEY

TALKEETNA MOUNTAINS (C-6) QUADRANGLE  
ALASKA-MATANUSKA-SUSITNA BOROUGH  
1:63 360 SERIES (TOPOGRAPHIC)



2,993.3 ac  
\$748,325 to  
\$897,990

Mapped, edited, and published by the Geological Survey  
Control by USGS and USC&GS  
Topography by photogrammetric methods from aerial photographs  
taken 1949.  
**LEGISLATIVE DESIGNATED AREA**  
Universal Transverse Mercator projection, 1927 North American datum  
10,000-foot (3,048-meter) grid spacing  
1000-meter (3281-foot) grid ticks, zone 6, shown in blue  
Land lines represent unsurveyed and unmarked locations  
predetermined by the Bureau of Land Management  
Folio S-2, Seward Meridian  
Swamps as portrayed, indicate only the wetter areas,  
usually of low relief, as interpreted from aerial photographs



CONTOUR INTERVAL 100 FEET  
DOTTED LINES REPRESENT 50 FOOT CONTOURS  
DATUM IS MEAN SEA LEVEL



TALKEETNA MOUNTAINS (C-6), ALASKA  
N6230-W14930/15x30

FOR SALE BY U. S. GEOLOGICAL SURVEY  
FAIRBANKS, ALASKA 99701, DENVER, COLORADO 80225 OR WASHINGTON, D. C. 20242  
A FOLDER DESCRIBING TOPOGRAPHIC MAPS AND SYMBOLS IS AVAILABLE ON REQUEST

TALKEETNA MOUNTAINS (C-6) 1964  
ROAD CLASSIFICATION  
No roads or trails in this area

1949  
MINOR REVISIONS 1964