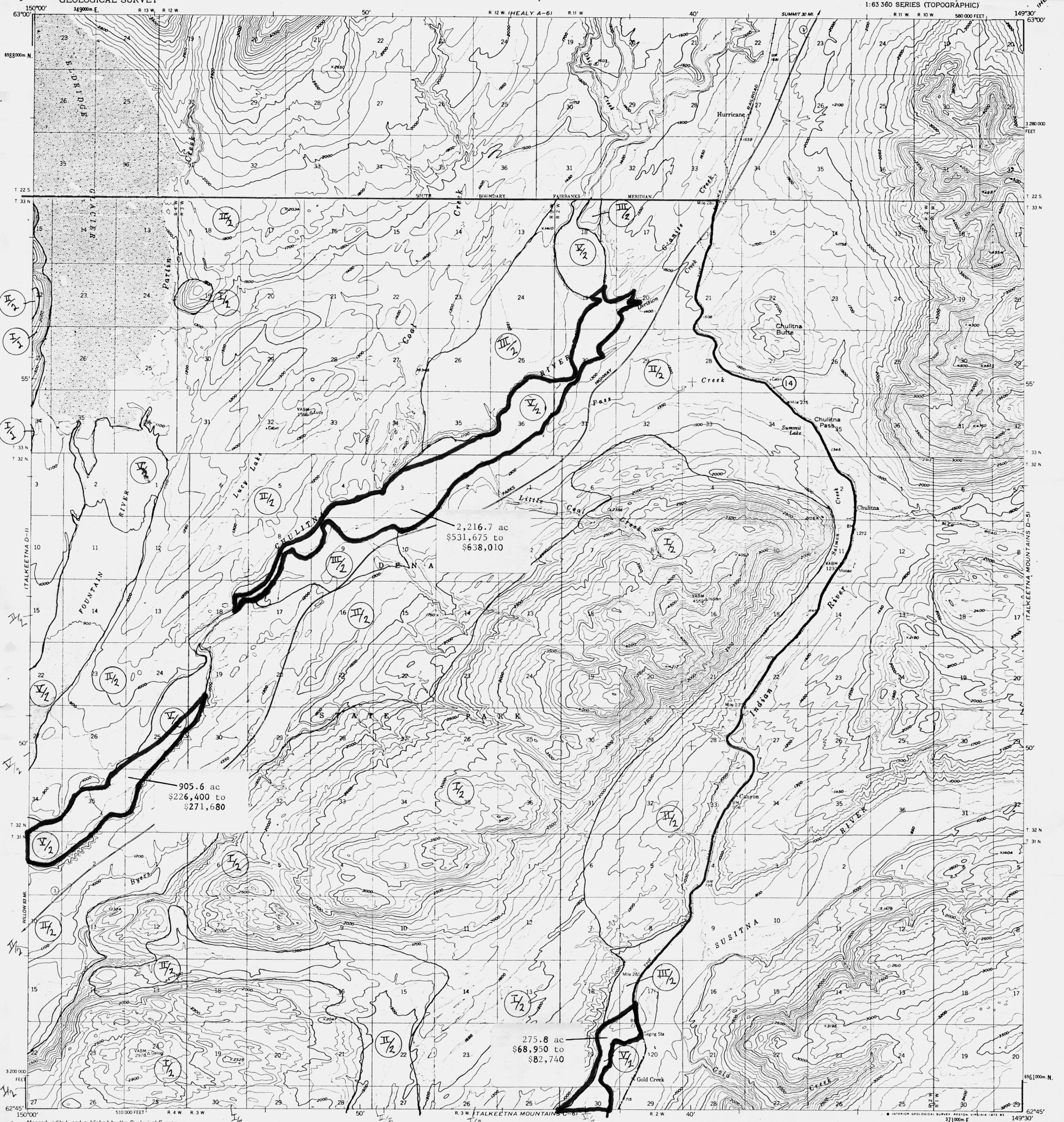
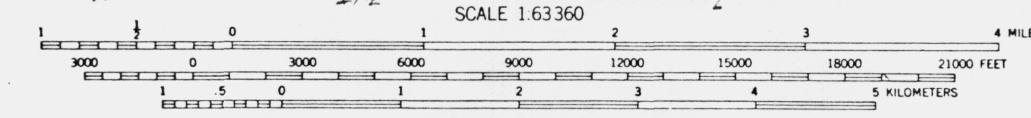
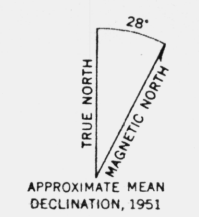


UNITED STATES  
DEPARTMENT OF THE INTERIOR  
GEOLOGICAL SURVEY

TALKEETNA MOUNTAINS (D-6) QUADRANGLE  
ALASKA-MATANUSKA-SUSITNA BOROUGH  
1:63 360 SERIES (TOPOGRAPHIC)



Maped, edited, and published by the Geological Survey  
Control by USGS and USC&GS  
Topography by photogrammetric methods from aerial photographs  
taken 1949. LEGISLATIVE DESIGNATED AREA  
Universal Transverse Mercator projection, 1927 North American datum  
10,000 foot scale based on Alaska coordinate system, zone 4  
1000 meter (1:62,500) DENALI STATE PARK AS 41.21.151-152  
zone 6, shown in blue  
Land lines represent unsurveyed and unmarked locations  
determined by the Bureau of Land Management  
Folios S-2, Seward Meridian and F-10, Fairbanks Meridian  
Swamps, as portrayed, indicate only the wetter areas.  
Dotted lines represent 50 foot contours  
NATIONAL GEODETIC VERTICAL DATUM OF 1929



TALKEETNA MOUNTAINS (D-6) 1966  
ROAD CLASSIFICATION  
Trails

TALKEETNA MOUNTAINS (D-6), ALASKA  
N6245-W14930/15x30  
1951

FOR SALE BY U.S. GEOLOGICAL SURVEY  
FAIRBANKS, ALASKA 99701, DENVER, COLORADO 80225, OR RESTON, VIRGINIA 22092