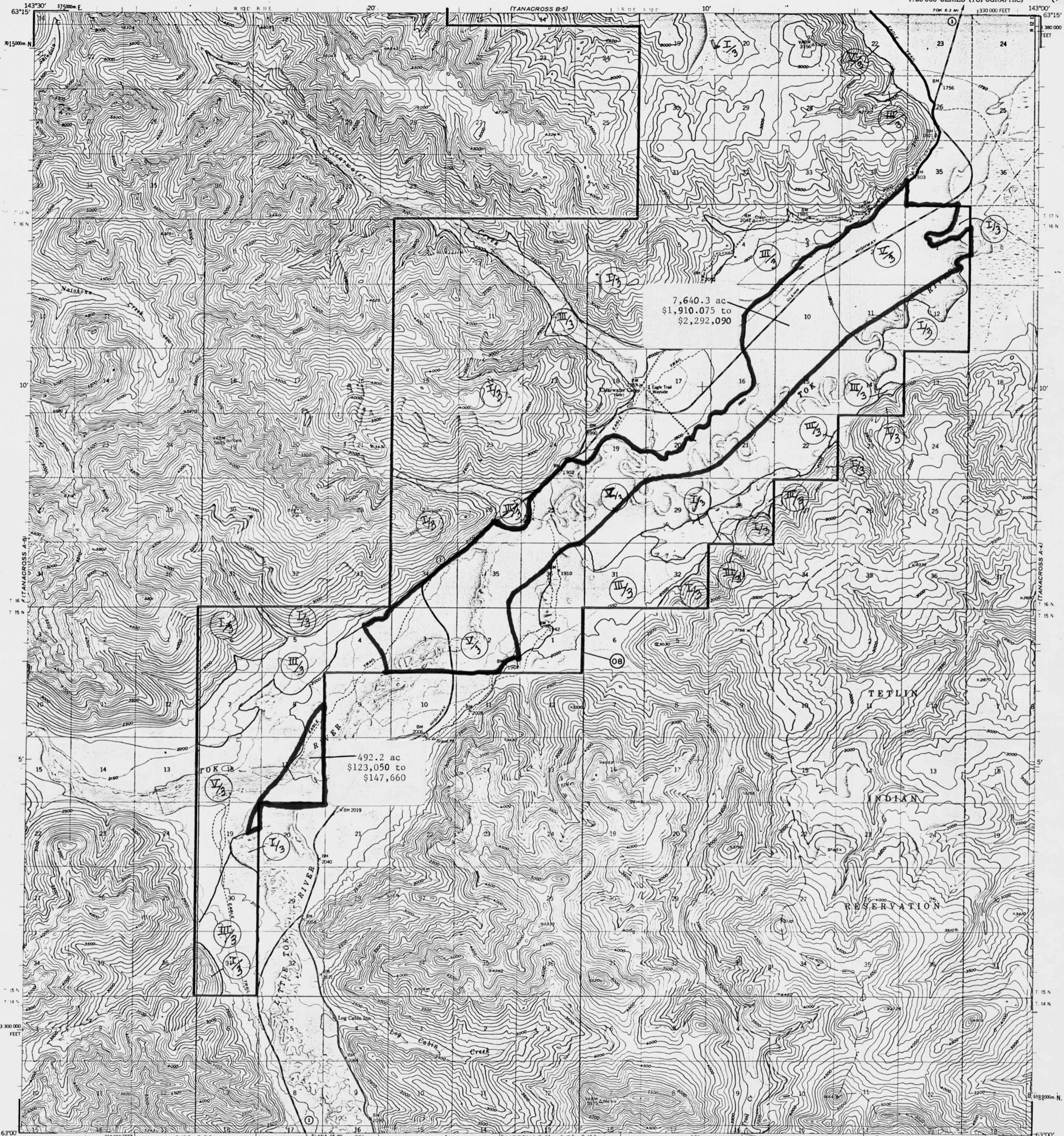
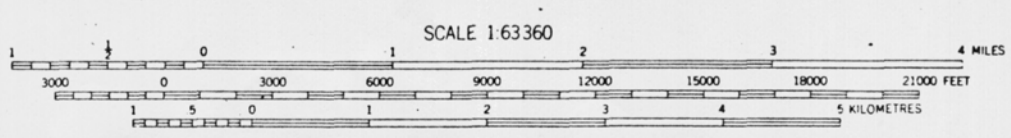
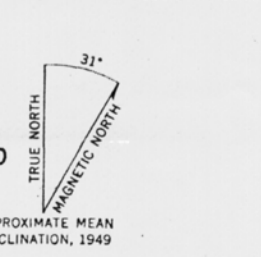


UNITED STATES  
DEPARTMENT OF THE INTERIOR  
GEOLOGICAL SURVEY

TANACROSS (A-5) QUADRANGLE  
ALASKA  
1:63 360 SERIES (TOPOGRAPHIC)



Maped, edited, and published by the Geological Survey  
Control by USGS and NOS/NOAA  
Topography by photogrammetric methods from aerial photographs taken 1948  
**LEGISLATIVE DESIGNATED AREA**  
Universal Transverse Mercator projection, 1927 North American datum  
10,000 foot base contour interval  
1000 meter contour interval  
**STATE FOREST AS 41.17.400**  
zone 7, shown in blue  
Gray land lines represent unsurveyed and unmarked locations predetermined by the Bureau of Land Management  
Folios CR-1 and CR-3, Copper River Meridian  
Swamps, as portrayed, indicate only the wetter areas, usually of low relief, as interpreted from aerial photographs



CONTOUR INTERVAL 100 FEET  
DOTTED LINES REPRESENT 50-FOOT CONTOURS  
NATIONAL GEODETIC VERTICAL DATUM OF 1929



ROAD CLASSIFICATION  
Medium-duty **TANACROSS (A-5) 1973**  
Unimproved dirt  
State Route

FOR SALE BY U. S. GEOLOGICAL SURVEY  
FAIRBANKS, ALASKA 99701, DENVER, COLORADO 80225, OR RESTON, VIRGINIA 22092  
A FOLDER DESCRIBING TOPOGRAPHIC MAPS AND SYMBOLS IS AVAILABLE ON REQUEST

TANACROSS (A-5), ALASKA  
N6300-W14300/15X30  
1949  
MINOR REVISIONS 1973