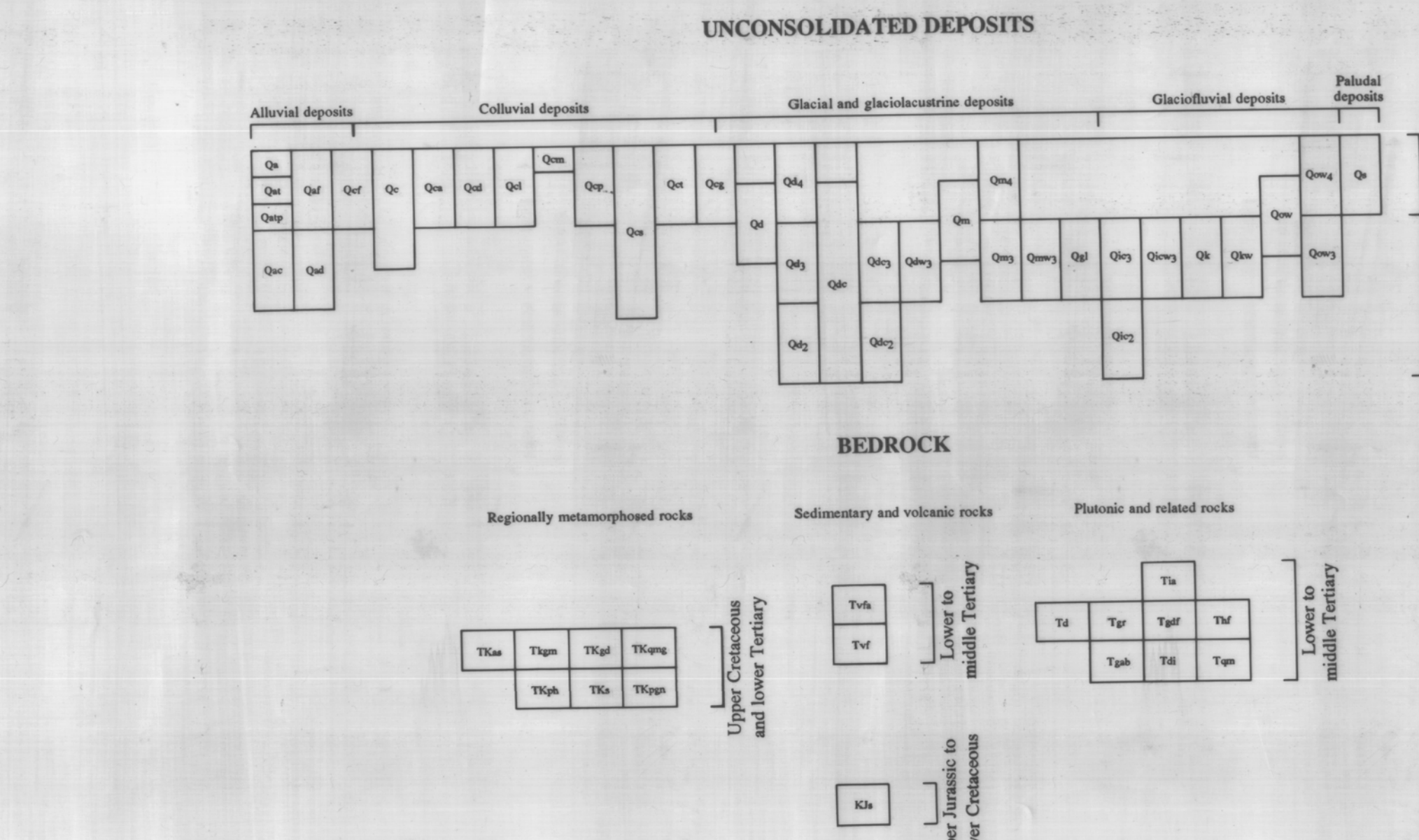
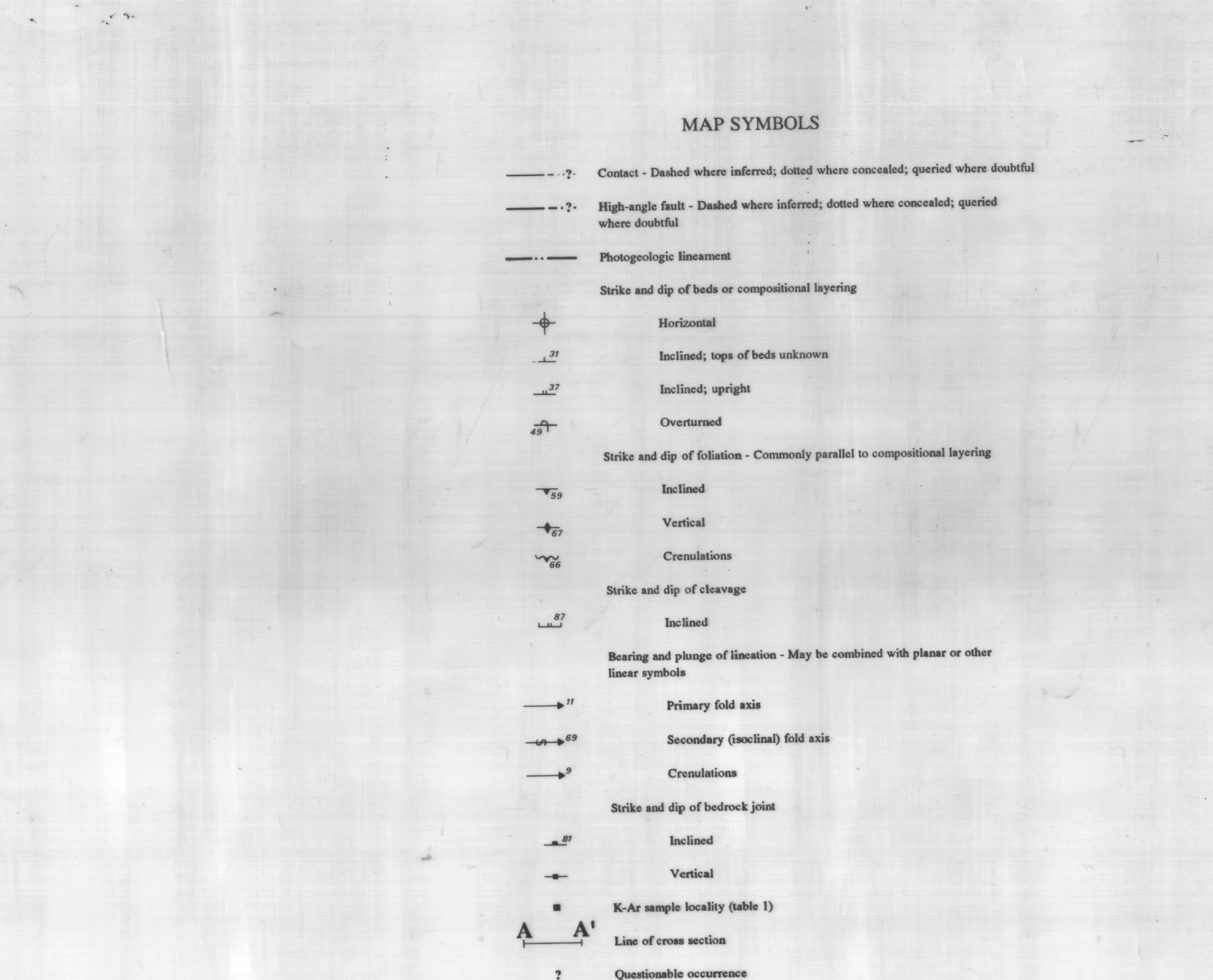


CORRELATION OF MAP UNITS

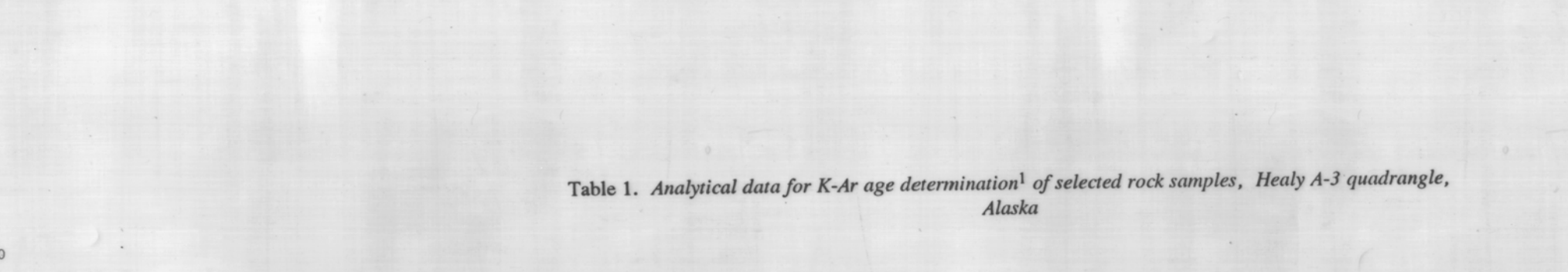
DESCRIPTION OF MAP UNITS



BEDROCK



MAP SYMBOLS



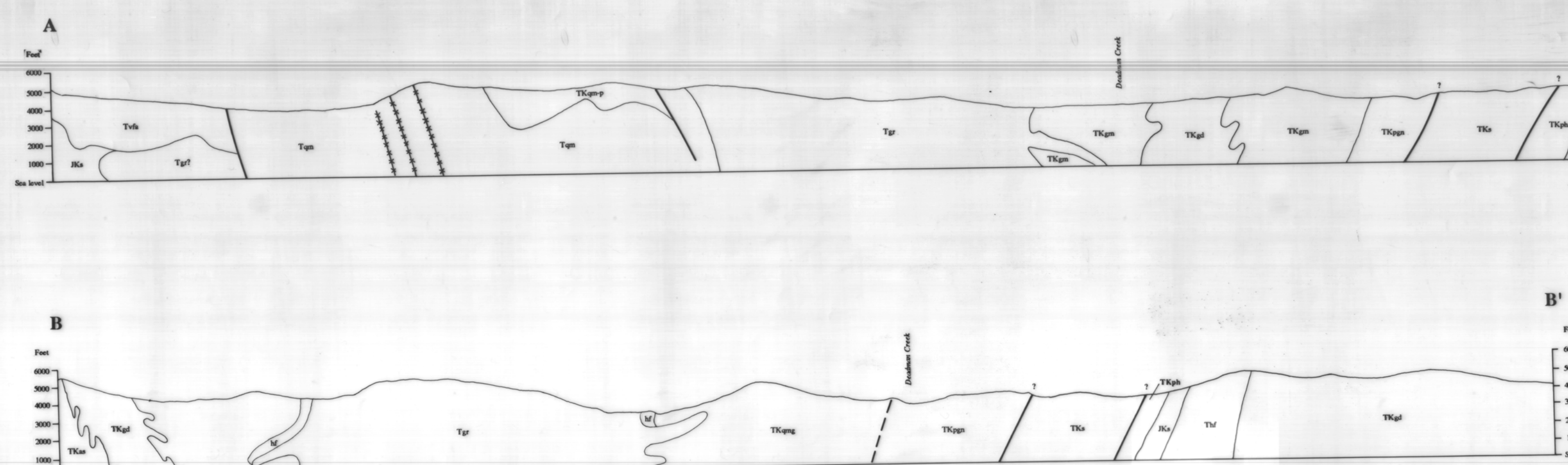
UNCONSOLIDATED DEPOSITS
Alluvial deposits
Colluvial deposits
Glacial and glaciolacustrine deposits
Paludal deposits
BEDROCK
Regionally metamorphosed rocks
Sedimentary and volcanic rocks
Plutonic and related rocks
CENOZOIC
MESOZOIC
CENOZOIC

Table 1. Analytical data for K-Ar age determination of selected rock samples, Healy A-3 quadrangle, Alaska

Table with 4 columns: Map number, Laboratory number, Mineral dated, and Age. It lists analytical data for various rock samples, including map numbers 1, 2, 3 and laboratory numbers TT-6-72, TT-4-72, and 72AST-178. Minerals analyzed include Biotite, Hornblende, K2O, and Ar.

Maplet, edited, and published by the Geological Survey...
SCALE 1:63,300
SCALE 1:63,300
SCALE 1:63,300

Surficial geology mapped by R.D. Reger, 1958. Bedrock mapped by T.E. Smith, and T.K. Bundtzen, 1973, and T.K. Bundtzen with contributions by W.G. Gilbert and D.N. Solie, 1988. Cartography by E.E. Harris.



No vertical exaggeration in cross sections
Quaternary units not shown in sections

GEOLOGIC MAP OF THE HEALY A-3 QUADRANGLE, ALASKA

By Richard D. Reger, Thomas K. Bundtzen, and Thomas E. Smith

REFERENCES

Bundtzen, T.K., Kline, J.T., Smith, T.E., and Allsance, M.D., 1988. Geology of the McGrath A-2 quadrangle, Alaska. Alaska Division of Geological and Geophysical Surveys Professional Report 92, 21 p., scale 1:63,360, 1 sheet.
Eakins, G.R., Gilbert, W.G., and Bundtzen, T.K., 1978. Preliminary bedrock geology of west-central Lake Clark quadrangle, Alaska. Alaska Division of Geological and Geophysical Surveys Open-File Report 118, 15 p., scale 1:63,360, 2 sheets.
Gilbert, W.G., Ferrell, V.M., and Turner, D.L., 1976. The Tkalnaka Formation—a new Paleocene volcanic formation in the central Alaska Range. Alaska Division of Geological and Geophysical Surveys Geologic Report 47, 16 p.
Reed, B.L., and Nelson, S.W., 1980. Geologic map of the Talkeetna quadrangle, Alaska. U.S. Geological Survey Miscellaneous Investigations Map I-1174, scale 1:250,000, 1 sheet.
Turner, D.L., and Smith, T.E., 1974. Geochronology and general geology of central Alaska Range, Clearwater Mountains, and northern Talkeetna Mountains, Alaska. Alaska Division of Geological and Geophysical Surveys Open-File Report 72, 10 p., scale 1:250,000, 1 sheet.
Turner, F.J., 1968. Metamorphic petrology. New York, McGraw-Hill Company, 403 p.