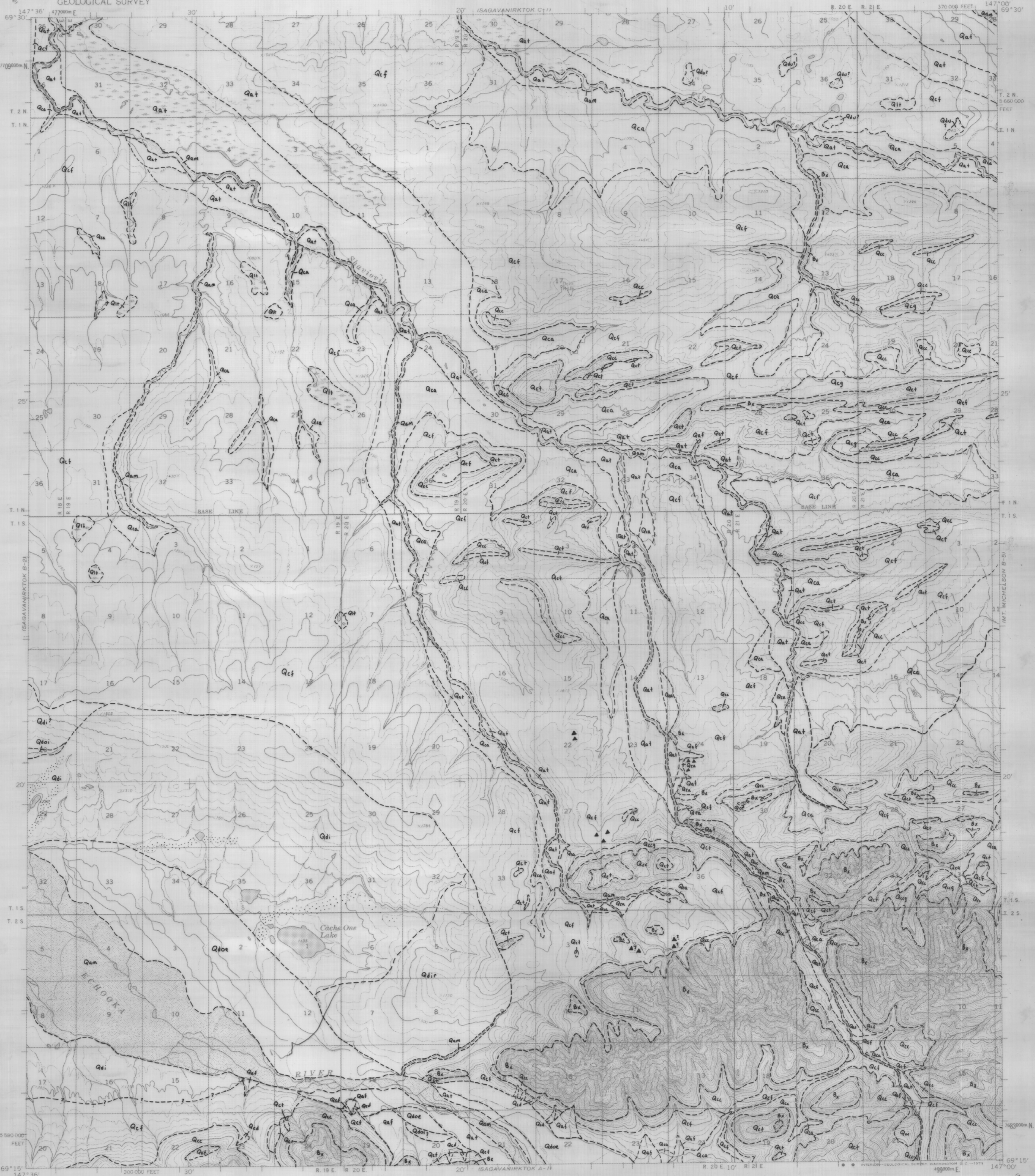


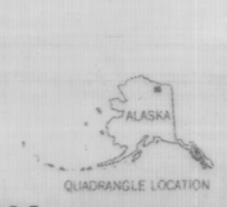
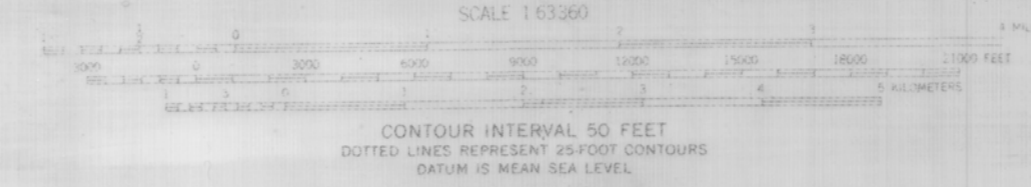
UNITED STATES DEPARTMENT OF THE INTERIOR GEOLOGICAL SURVEY

SAGAVANIRK TOK (B-1) QUADRANGLE ALASKA

1:63 360 SERIES (TOPOGRAPHIC)



Mapped, edited, and published by the Geological Survey Control by USGS and USC&GS. Topography by photogrammetric methods from aerial photographs taken 1970, field annotated 1971. Map not field checked. Projection and 1000-meter grid ticks: Universal Transverse Mercator, zone 6. 10,000-foot grid based on Alaska coordinate system, zone 3. 1927 North American datum. Land lines represent unsurveyed and unmarked locations predetermined by the Bureau of Land Management. Foiau U-2 and U-12, Umiat Meridian. Swamps as portrayed, indicate only the wetter areas, usually of low relief, as interpreted from aerial photographs.



SAGAVANIRK TOK (B-1), ALASKA N6915-W14700/15 X 36

SURFICIAL GEOLOGIC MAP OF THE SAGAVANIRK TOK B-1 QUADRANGLE, NORTHEASTERN BROOKS RANGE, ALASKA

by Chris F. Waythomas December 1991