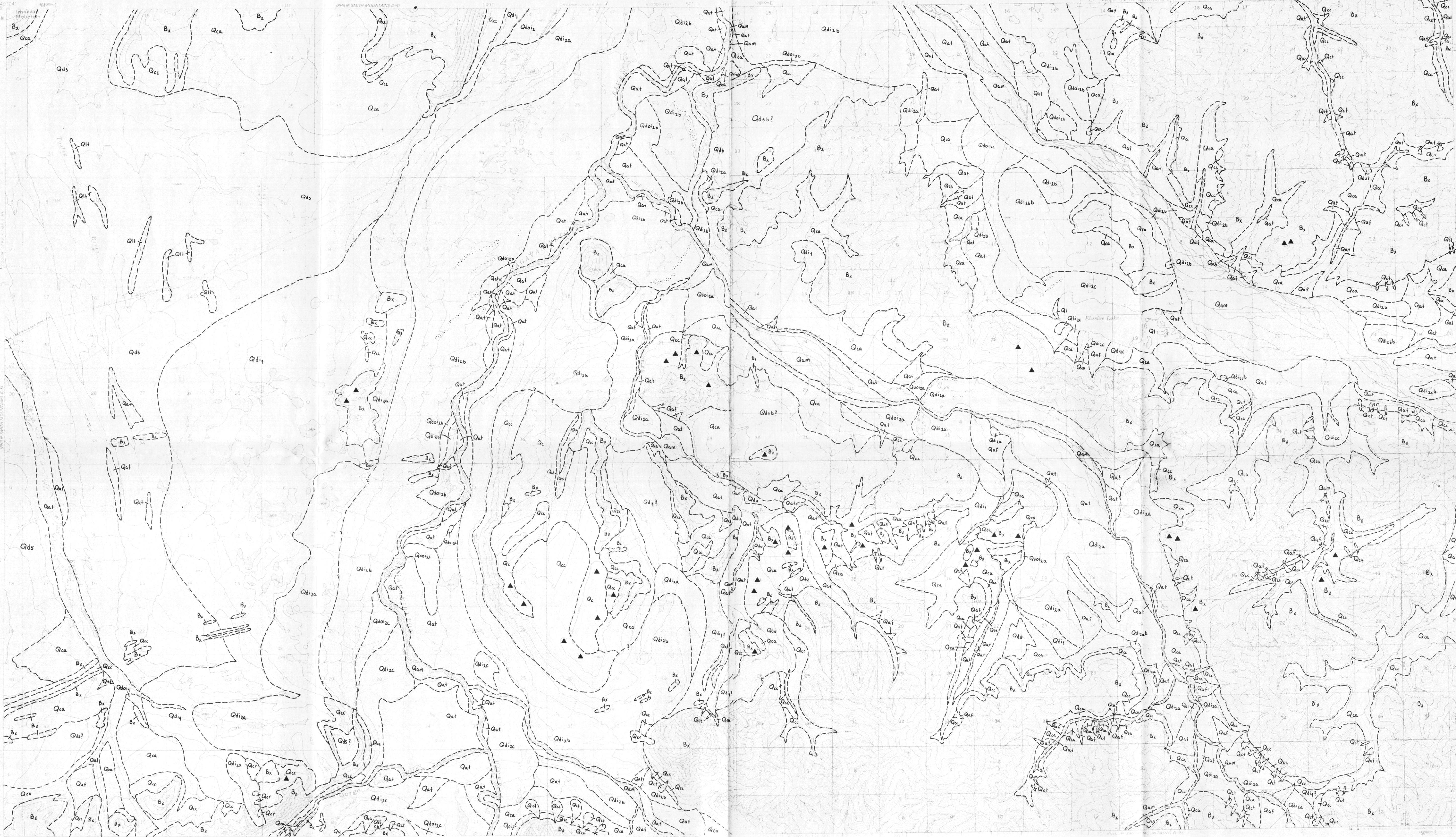


PHILIP SMITH MOUNTAINS (C-4) QUADRANGLE
ALASKA - NORTH SLOPE BOROUGH
1:63 560 SERIES (TOPOGRAPHIC)

PHILIP SMITH MOUNTAINS (C-3) QUADRANGLE
ALASKA
1:63 560 SERIES (TOPOGRAPHIC)



Map compiled, edited, and published by the Geological Survey
of the United States and the USGS.
Topography by photogrammetry, contour lines from a photogrammetry
taken 1950; base map from 1951. Map not to scale.
Elevation was 1000-foot and 500-foot contours.
Transverse Mercator, zone 6.
1:63 560 has and ticks, except for Alaska coordinate
system, zone 4. 1967 North American datum.
Scale 1:63 560.
Map was prepared and used and was not
checked by the Bureau of Land Management
under 2-11-1967.
Map was prepared and used and was not
checked by the Bureau of Land Management
under 2-11-1967.

CONTOUR INTERVAL: 50 FEET
NATIONAL GEODETIC VERTICAL DATUM OF 1929

PHILIP SMITH MOUNTAINS (C-4) QUADRANGLE
ALASKA - NORTH SLOPE BOROUGH
1:63 560 SERIES (TOPOGRAPHIC)

CONTOUR INTERVAL: 50 FEET
NATIONAL GEODETIC VERTICAL DATUM OF 1929

PHILIP SMITH MOUNTAINS (C-3) QUADRANGLE
ALASKA
1:63 560 SERIES (TOPOGRAPHIC)

**SURFICIAL GEOLOGIC MAP OF THE PHILIP SMITH MOUNTAINS C-3 AND C-4
QUADRANGLES,
NORTHEASTERN BROOKS RANGE, ALASKA**

by Chris F. Waythomas

October 1992