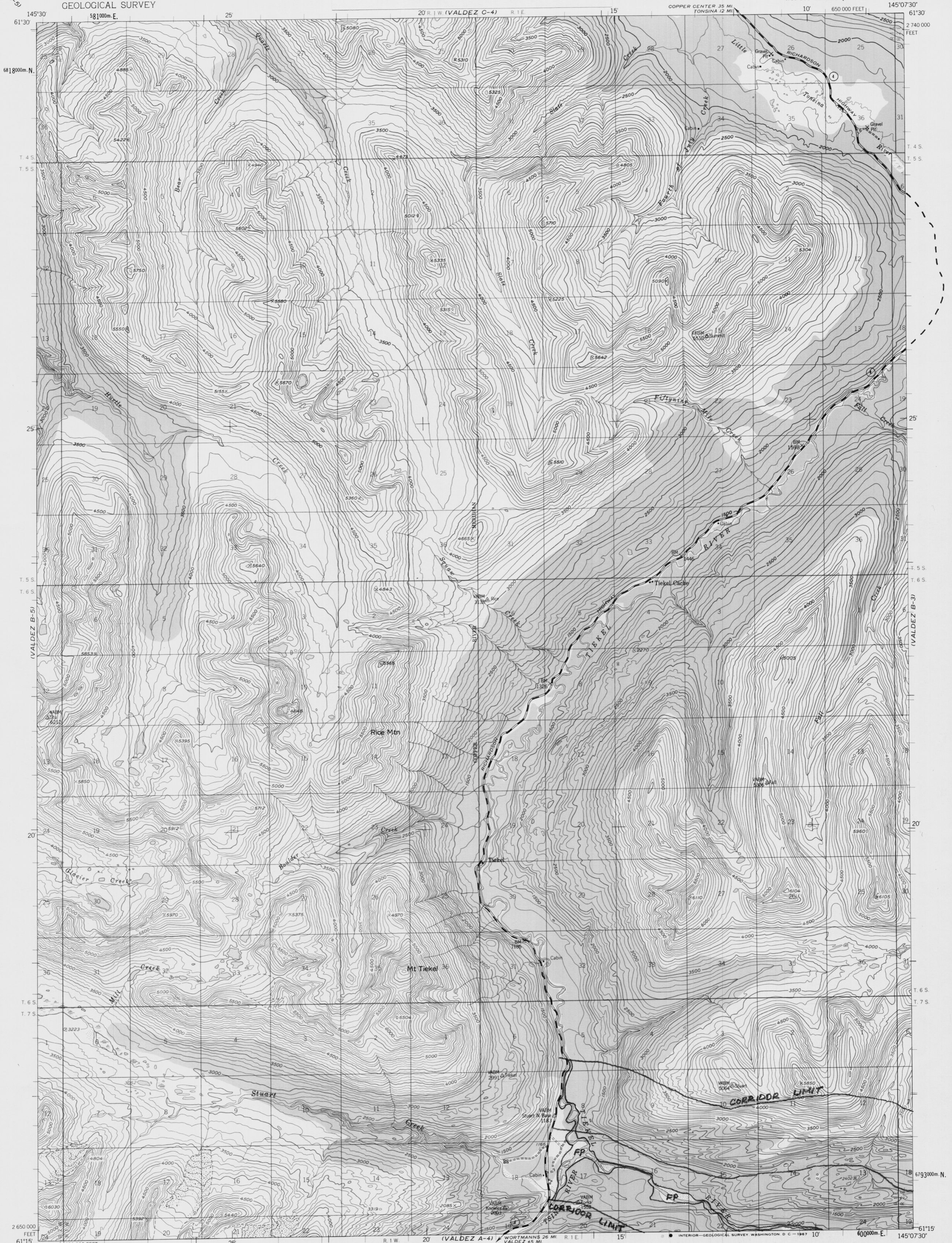


SHEET 8 - PDF 92-24  
**COPPER RIVER HIGHWAY  
 ENVIRONMENTAL IMPACT STUDIES:  
 HYDROLOGIC ASPECTS**  
 by DNR/Division of Water  
 Alaska Hydrologic Survey

UNITED STATES  
 DEPARTMENT OF THE INTERIOR  
 GEOLOGICAL SURVEY

VALDEZ (B-4) QUADRANGLE  
 ALASKA  
 1:63 360 SERIES (TOPOGRAPHIC)

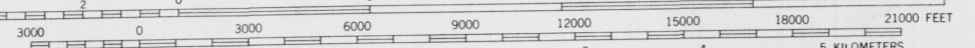


Mapped, edited, and published by the Geological Survey  
 Control by USGS and USC&GS

Topography by photogrammetric methods from aerial photographs  
 taken 1950, field annotated 1951. Map not field checked  
 Universal Transverse Mercator projection, 1927 North American datum  
 10,000 foot grid based on Alaska coordinate system, zone 3  
 1000 meter Universal Transverse Mercator grid ticks,  
 zone 6, shown in blue

Land lines represent unsurveyed and unmarked locations  
 predetermined by the Bureau of Land Management  
 Folios CR-5 and CR-6, Copper River Meridian

Swamps, as portrayed, indicate only the wetter areas,  
 usually of low relief, as interpreted from aerial photographs



CONTOUR INTERVAL 100 FEET  
 DATUM IS MEAN SEA LEVEL

ROAD CLASSIFICATION  
 Medium-duty ————— Unimproved dirt .....  
 ○ State Route



FOR SALE BY U. S. GEOLOGICAL SURVEY  
 FAIRBANKS, ALASKA 99701, DENVER, COLORADO 80225, OR WASHINGTON, D. C. 20242  
 A FOLDER DESCRIBING TOPOGRAPHIC MAPS AND SYMBOLS IS AVAILABLE ON REQUEST

VALDEZ (B-4), ALASKA  
 N6115-W14507.5/1522.5

1951  
 MINOR REVISIONS 1966