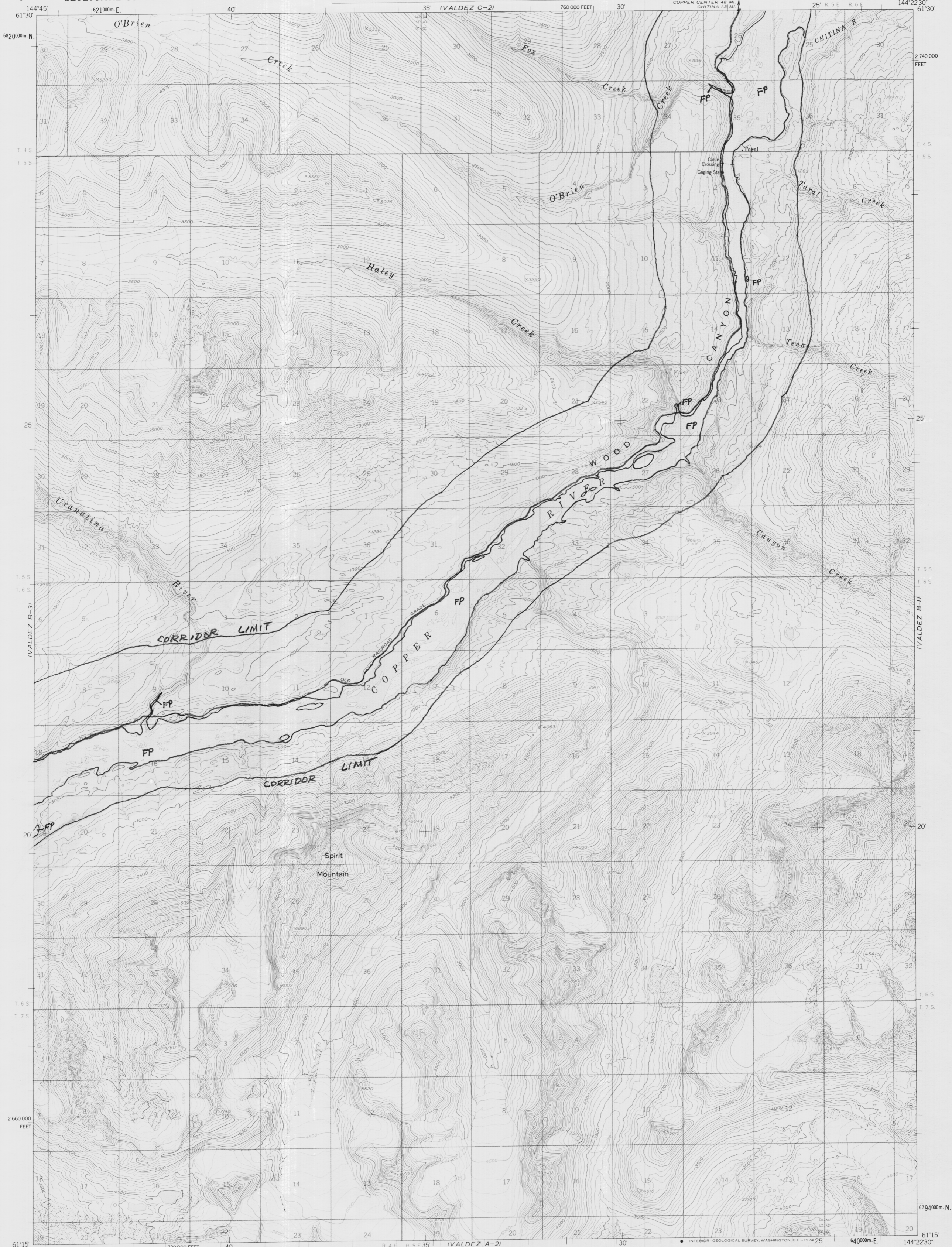


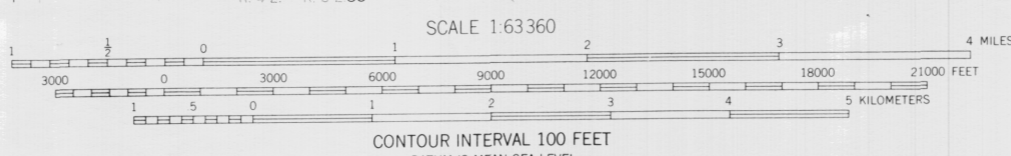
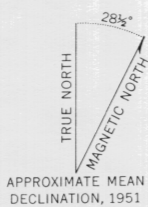
SHEET 10 of 24
COPPER RIVER HIGHWAY
ENVIRONMENTAL IMPACT STUDIES:
HYDROLOGIC ASPECTS
 by DNR/Division of Water
 Alaska Hydrologic Survey

UNITED STATES
 DEPARTMENT OF THE INTERIOR
 GEOLOGICAL SURVEY

VALDEZ (B-2) QUADRANGLE
 ALASKA
 1:63 360 SERIES (TOPOGRAPHIC)



Mapped, edited, and published by the Geological Survey
 Control by USGS
 Topography by photogrammetric methods from aerial photographs
 taken 1950 and 1957, field annotated 1951. Map not field checked
 Universal Transverse Mercator projection, 1927 North American datum
 10,000-foot grid based on Alaska coordinate system, zone 3
 1000-meter Universal Transverse Mercator grid ticks,
 zone 6, shown in blue
 Land lines represent unsurveyed and unmarked locations
 predetermined by the Bureau of Land Management
 Folio CR-6, Copper River Meridian



CONTOUR INTERVAL 100 FEET
 DATUM IS MEAN SEA LEVEL



ROAD CLASSIFICATION
 Unimproved dirt -----

VALDEZ (B-2), ALASKA
 N6115-W14422.5/15X22.5

1951
 MINOR REVISIONS 1972

FOR SALE BY U. S. GEOLOGICAL SURVEY
 FAIRBANKS, ALASKA 99701, DENVER, COLORADO 80225, OR WASHINGTON, D. C. 20242
 A FOLDER DESCRIBING TOPOGRAPHIC MAPS AND SYMBOLS IS AVAILABLE ON REQUEST