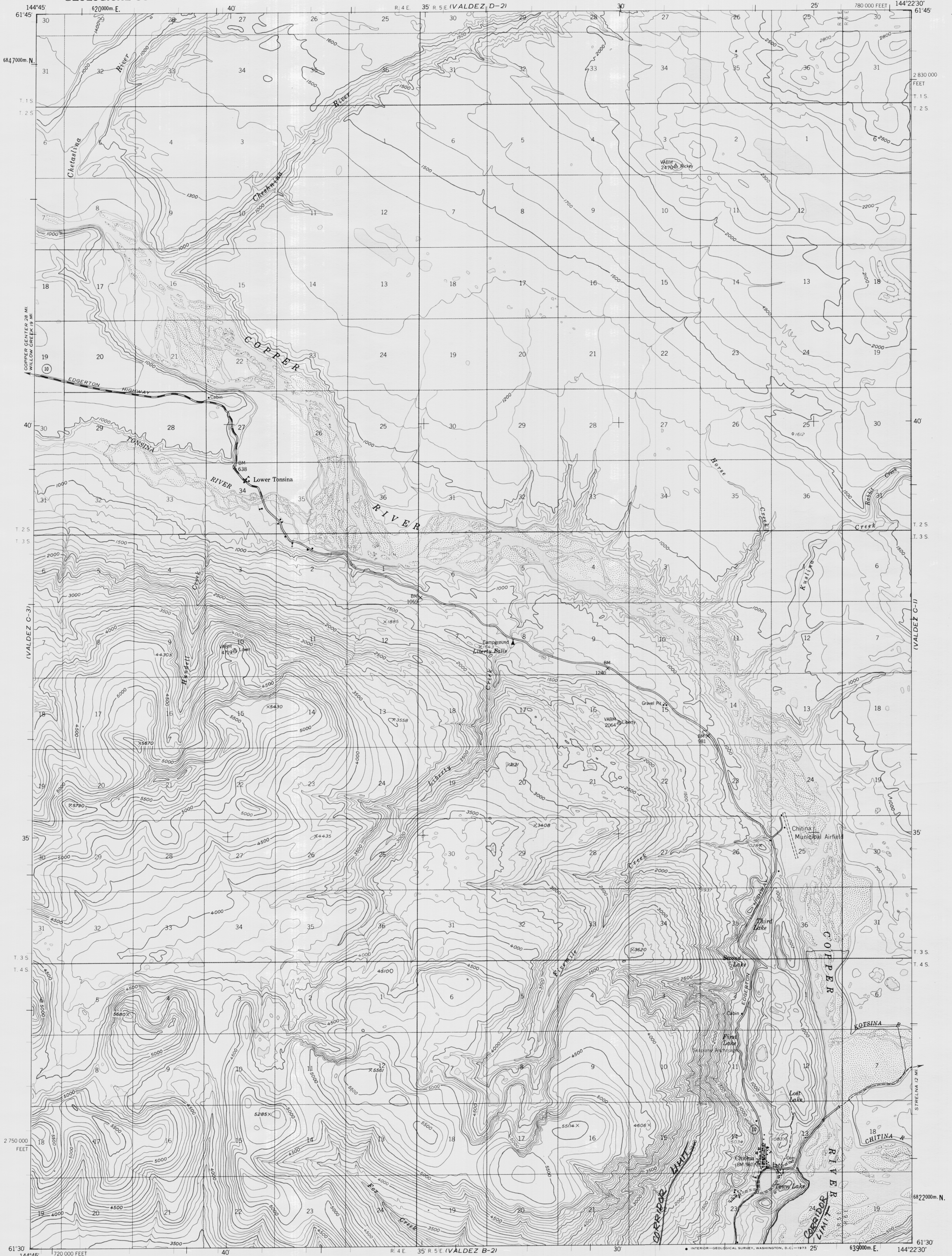


SHEET 11 - PDF 92-24  
**COPPER RIVER HIGHWAY**  
**ENVIRONMENTAL IMPACT STUDIES:**  
**HYDROLOGIC ASPECTS**  
 by DNR/Division of Water  
 Alaska Hydrologic Survey

UNITED STATES  
 DEPARTMENT OF THE INTERIOR  
 GEOLOGICAL SURVEY

VALDEZ (C-2) QUADRANGLE  
 ALASKA  
 1:63 360 SERIES (TOPOGRAPHIC)

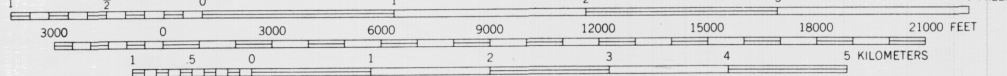
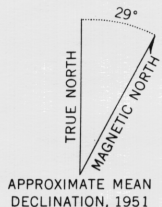


Mapped, edited, and published by the Geological Survey  
 Control by USGS and USC&GS

Topography by photogrammetric methods from aerial photographs  
 taken 1950, field annotated 1951. Map not field checked

Universal Transverse Mercator projection 1927 North American datum  
 10,000-foot grid based on Alaska coordinate system, zone 3  
 1000-meter Universal Transverse Mercator grid ticks,  
 zone 6, shown in blue

Gray land lines represent unsurveyed and unmarked locations  
 predetermined by the Bureau of Land Management.  
 Folio CR-6, Copper River Meridian



ROAD CLASSIFICATION  
 Medium-duty ——— Light-duty ———  
 Unimproved dirt - - - - -  
 State Route ○



FOR SALE BY U. S. GEOLOGICAL SURVEY  
 FAIRBANKS, ALASKA 99701, DENVER, COLORADO 80225, OR WASHINGTON, D. C. 20242  
 A FOLDER DESCRIBING TOPOGRAPHIC MAPS AND SYMBOLS IS AVAILABLE ON REQUEST

VALDEZ (C-2), ALASKA  
 N6130-W14422.5/15X22.5

1951  
 MINOR REVISIONS 1971