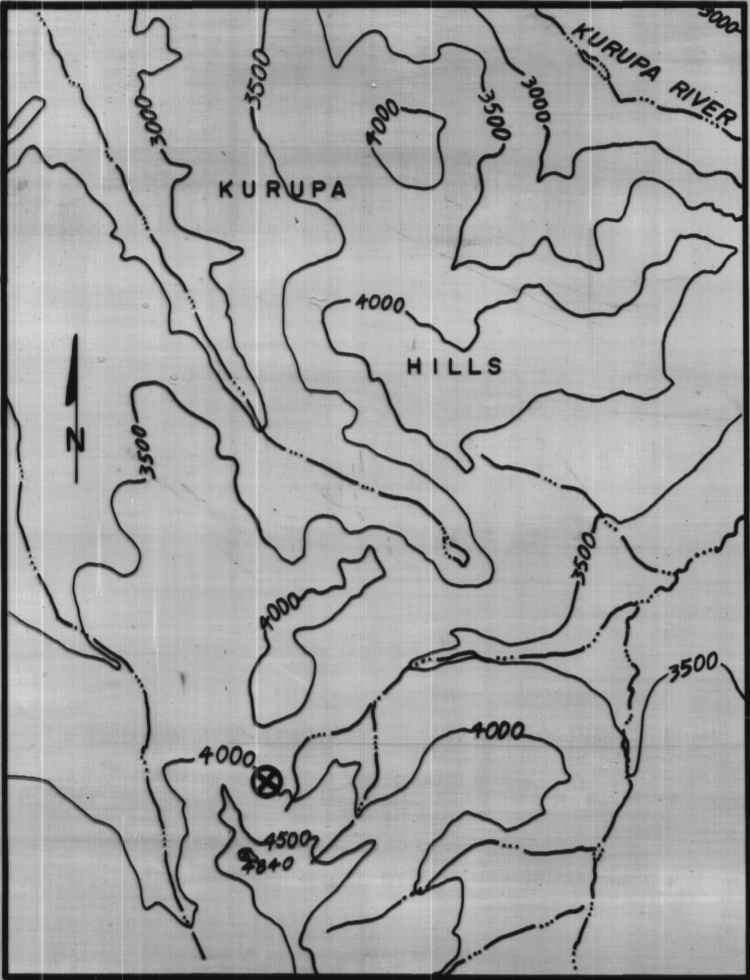


SOUTH KURUPA HILLS, ALASKA  
STRATIGRAPHIC SECTION

Measured with Jacob Staff, June 1983  
by Dirk A. Bodnar and  
Jerome Siok.

LAT. 68° 19' 48" N  
LONG. 154° 50' 48" W



CONTOUR INTERVAL: 1=500' SCALE: 1"= 1 MILE

LEGEND

- Radiolaria

Foraminifera

Brachiopods

Pelecypods

Orthoconic Nautiloids

Limestone

Silicified Limestone (very cherty)

Shale

Limestone Nodules
- Ostracodes

Conodonts

Ammonites

Belemnites

Trace Fossils

Siltstone, Dolomitic Siltstone

Bedded Chert

Fossiliferous

Cherty Nodules

VERTICAL SCALE : 1 inch = 4 meters

SERIES		STAGE	FORMATION	MEMBER	Cumulative Thickness (Meters)	GRAPHIC COLUMN	SAMPLE NO.	FOSSILS	LITHOLOGY DESCRIPTION
UPPER TRIASSIC	NORIAN	OTUK FORMATION	LIMESTONE MEMBER		20				Top of Section — top of hill, moss covered. Small rubbly limestone outcrop. Cover, limestone rubble and moss.  Platy light-gray limestone interbedded with black calcareous fossiliferous shales. Thin shale beds contain coquina horizons of <u>Monotis</u> .  Cover, moss and silicified limestone rubble.  Medium-gray fine-grained limestone. Weathers tan and gray and has thinner platy limestone interbeds between thicker (to 20 cm) limestone beds.  Silicified, banded weathering limestone. Weathers with tan outer and black cherty inner parts to beds. Some beds show laminations.  Gray cherts interbedded with gray limestone and greenish-gray silty shale. Cherts weather green-gray. A few black cherty nodules in limestone beds. Cherts have wispy lamination and are thinly interbedded with other lithologies.  Gray crystalline limestone bed. Banded weathering color with light gray outer and black inner parts. Interbedded greenish-gray chert (80%) and black shale with green-gray shale. Interbedded shale is calcareous. Cherts weather banded with tan outer and greenish-gray inner parts. Aluminum tag at 2.5 meters.  Black cherts, wavy bedded, thinly laminated, with disseminated pyrite.
				CHELT MEMBER	0				Base of section covered by moss. Bear den at base of outcrop. Sample 83B083 from 10 m along strike, 1 meter stratigraphically below base of section.  Strike N 20°E Dip 25°W