

Figure 1: Total field magnetics of the Petersville mining district. Magnetic units are in nT.

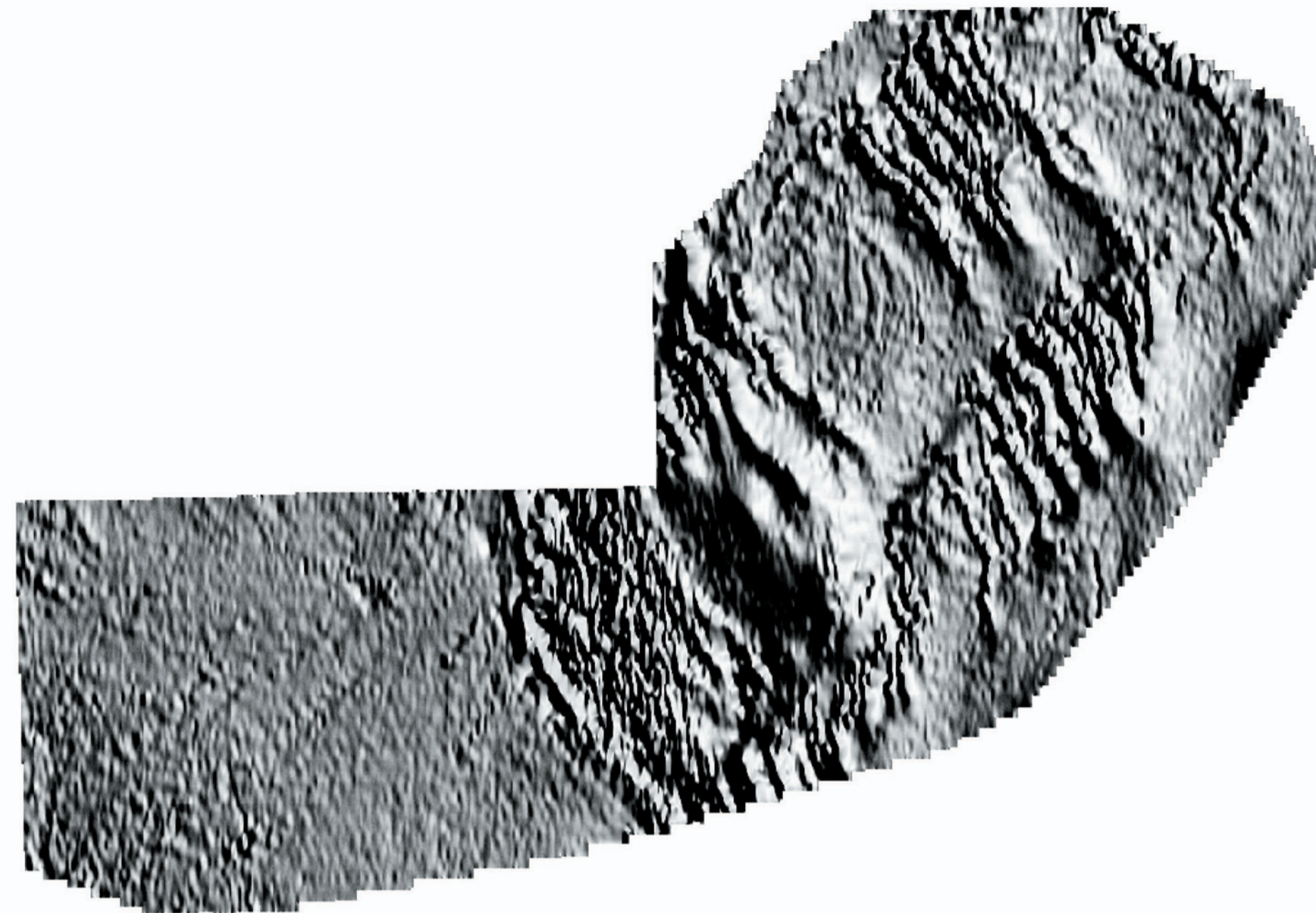


Figure 2: Shadow map of the aeromagnetic data from the Petersville area, Alaska. Illumination source is at 63 degrees. High magnetic values appear like the tops of mountains that are hit by sunlight.

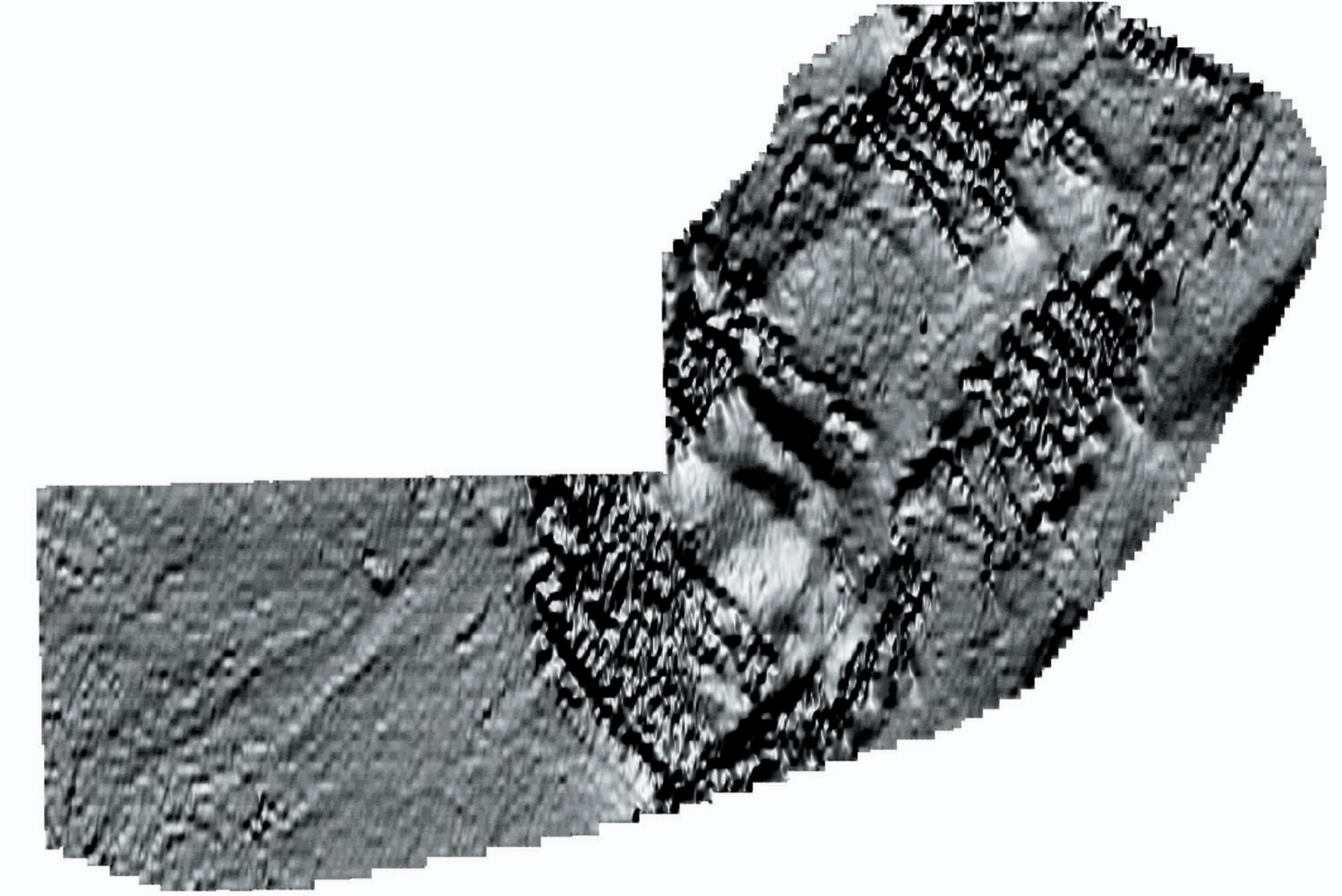


Figure 3: Shadow map of the aeromagnetic data from the Petersville area, Alaska. Illumination source is at 350 degrees. High magnetic values appear like the tops of mountains that are hit by sunlight.

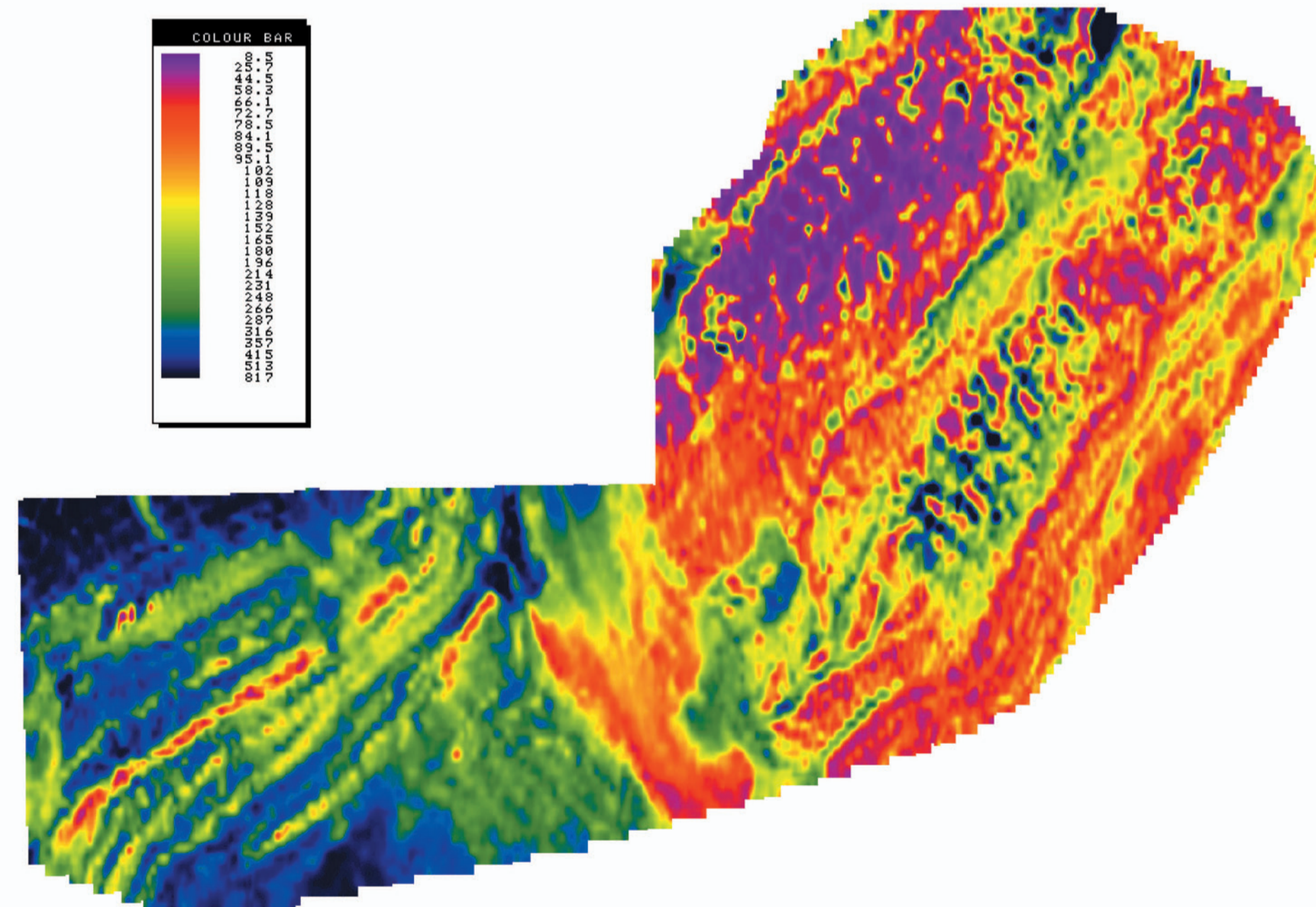


Figure 4: 7200 Hz resistivity map of the Petersville area, Alaska. Resistivity values in ohm-m. Conductive units have low values and are shown in purple and orange on this map.

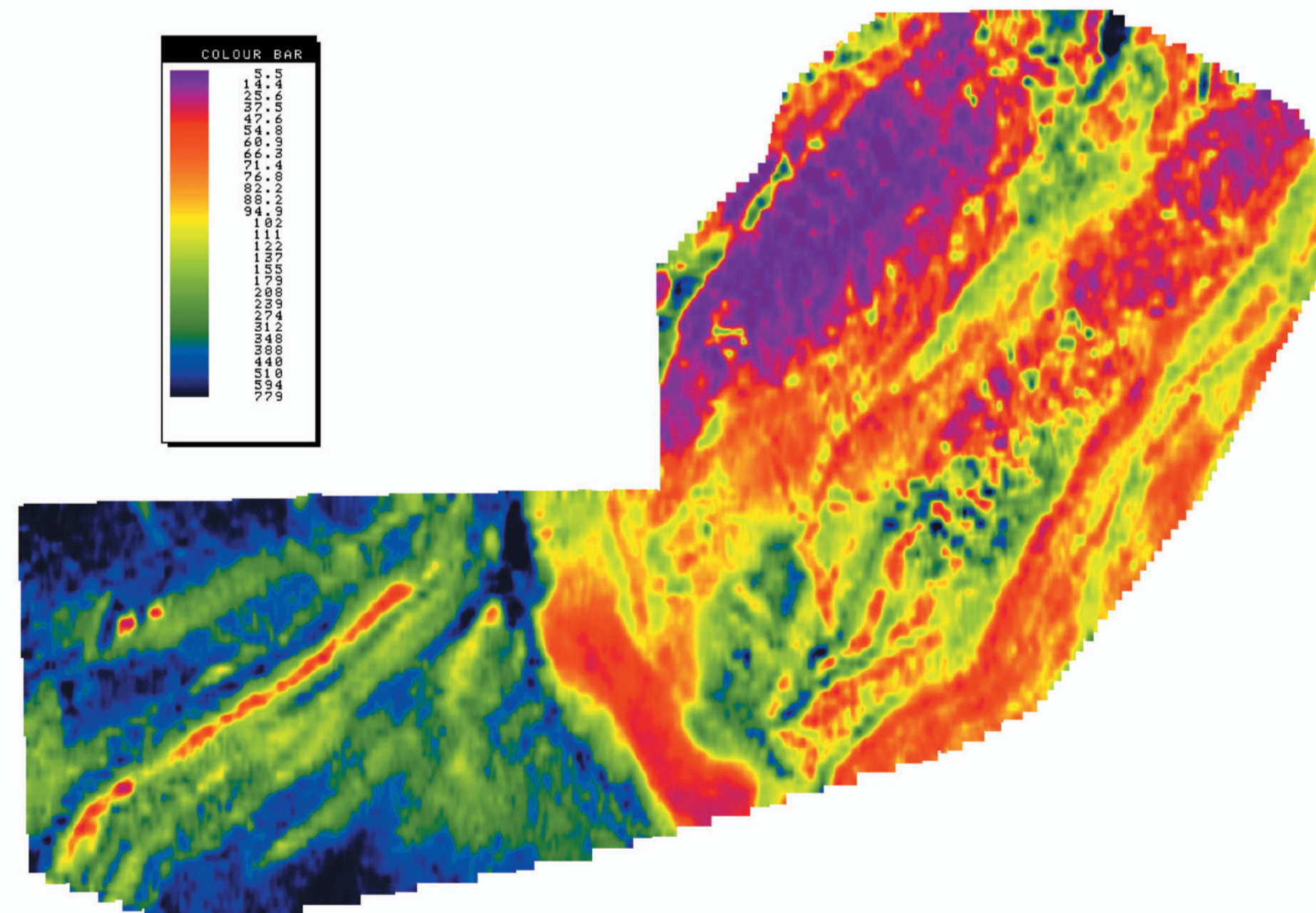


Figure 5: 900 Hz resistivity map of the Petersville area, Alaska. Resistivity values in ohm-m. Conductive units have low values and are shown in purple and orange on this map.