

Figure 1: Total field magnetics of the Rampart-Manley mining area. Magnetic units are in nT.

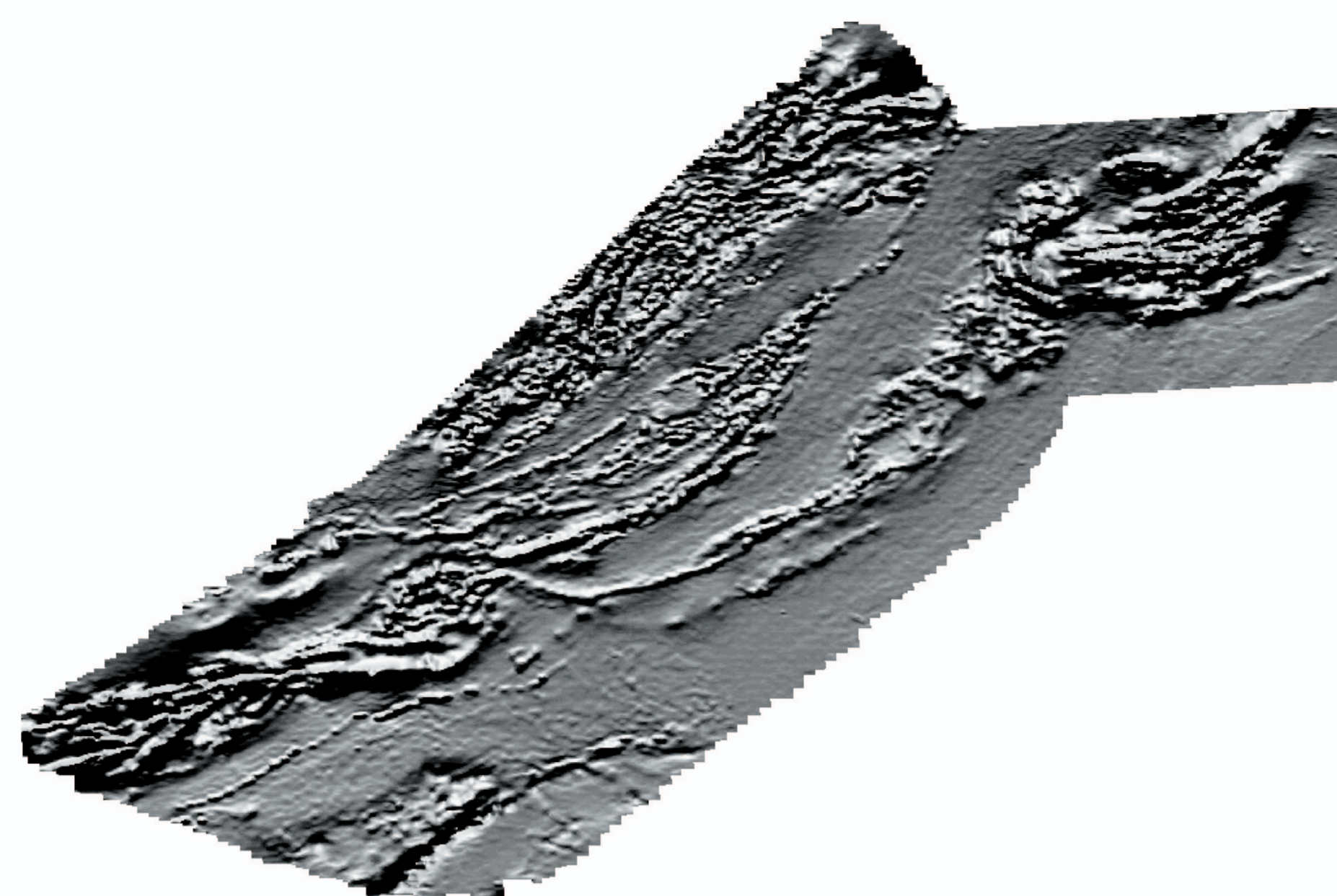


Figure 2: Shadow map of the aeromagnetic data from the Rampart-Manley area, Alaska. Illumination source is at 351 degrees. High magnetic values appear like the tops of mountains that are hit by sunlight.

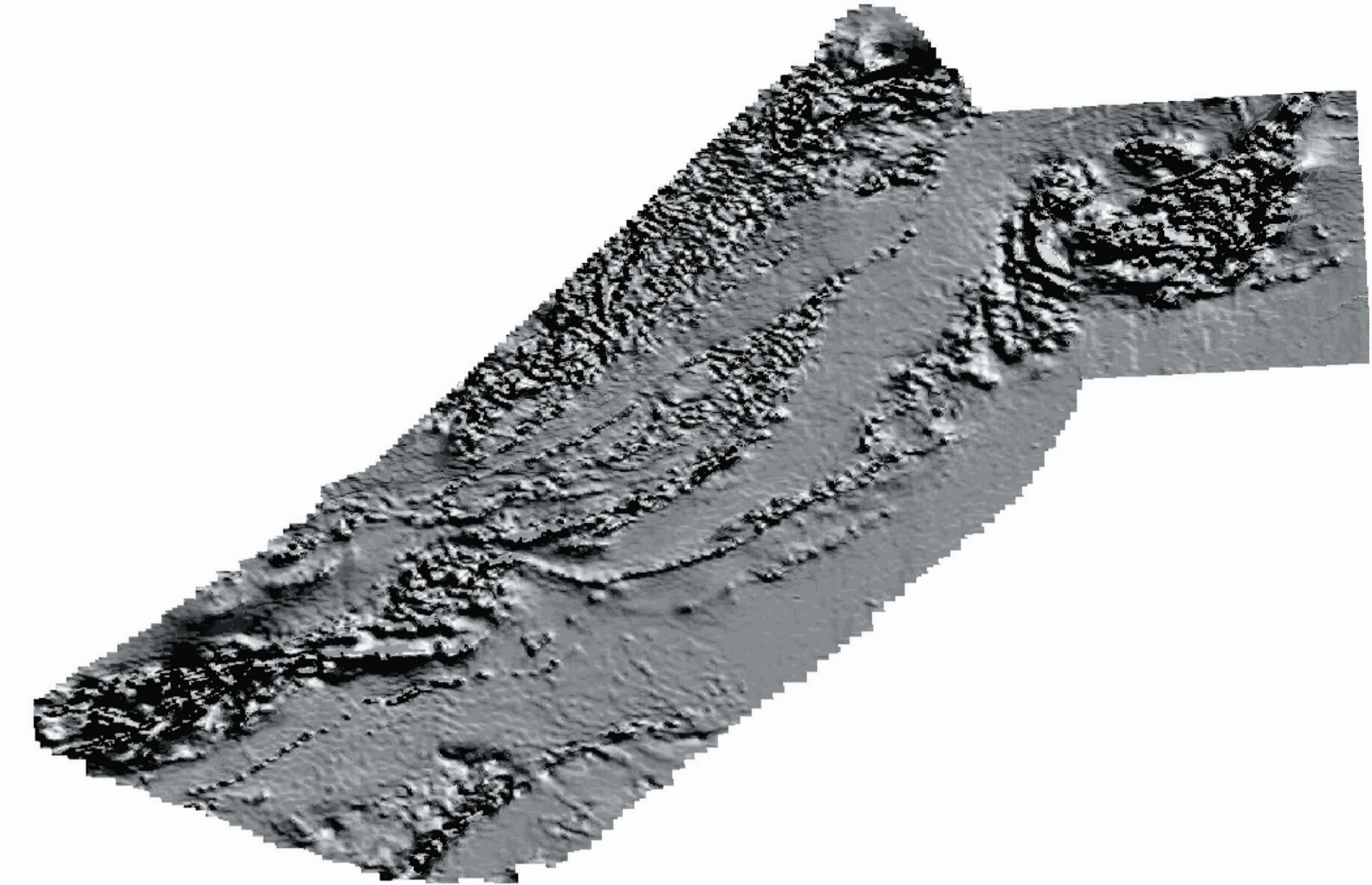


Figure 3: Shadow map containing the new aeromagnetic data from the Rampart-Manley area, Alaska. Illumination source is at 45 degrees. High magnetic values appear like the tops of mountains that are hit by sunlight.

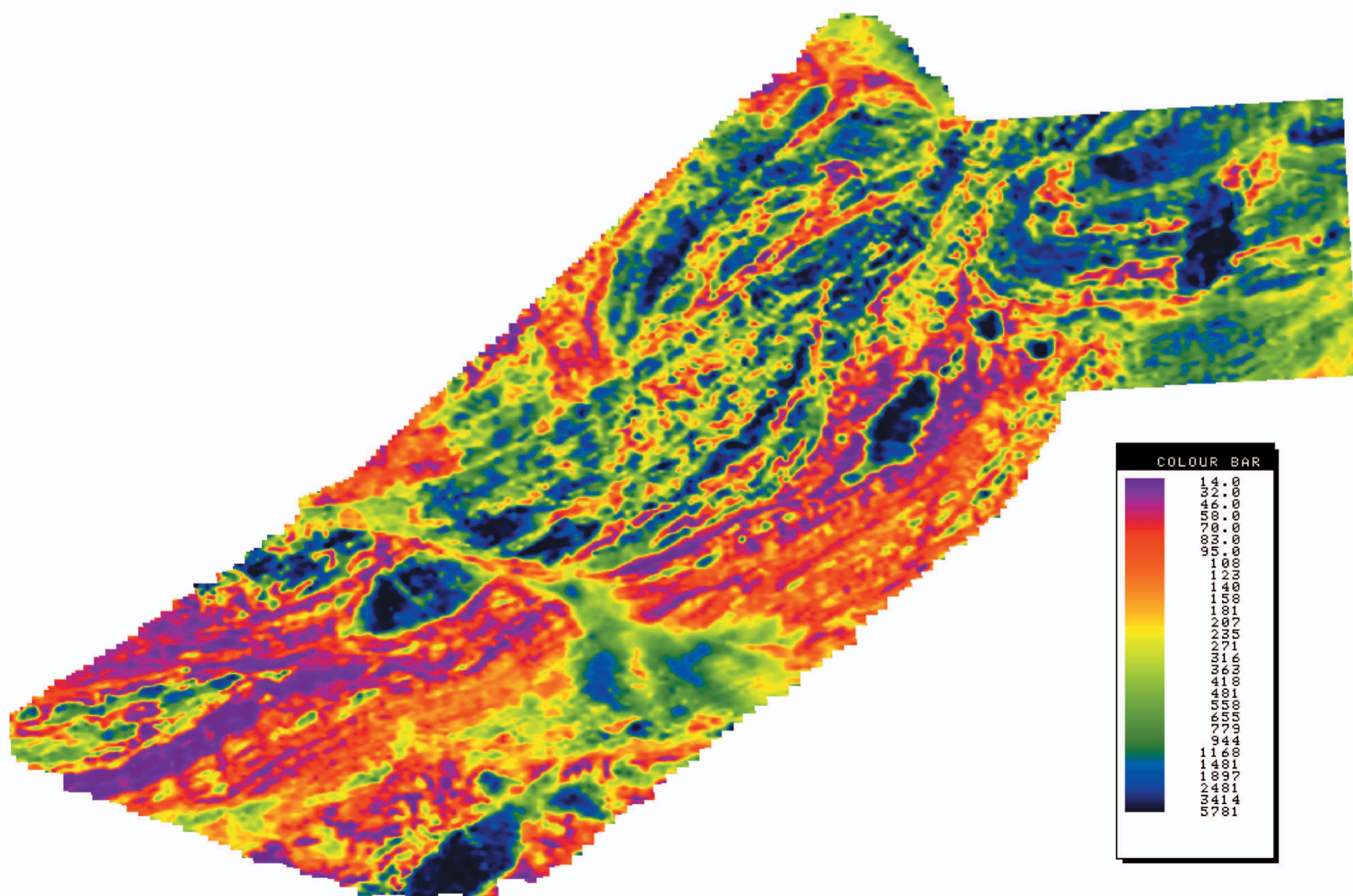


Figure 4: 7200 Hz resistivity map of the Rampart-Manley area, Alaska. Resistivity values in ohm-m. Conductive units have low values and are shown in purple and orange on this map.

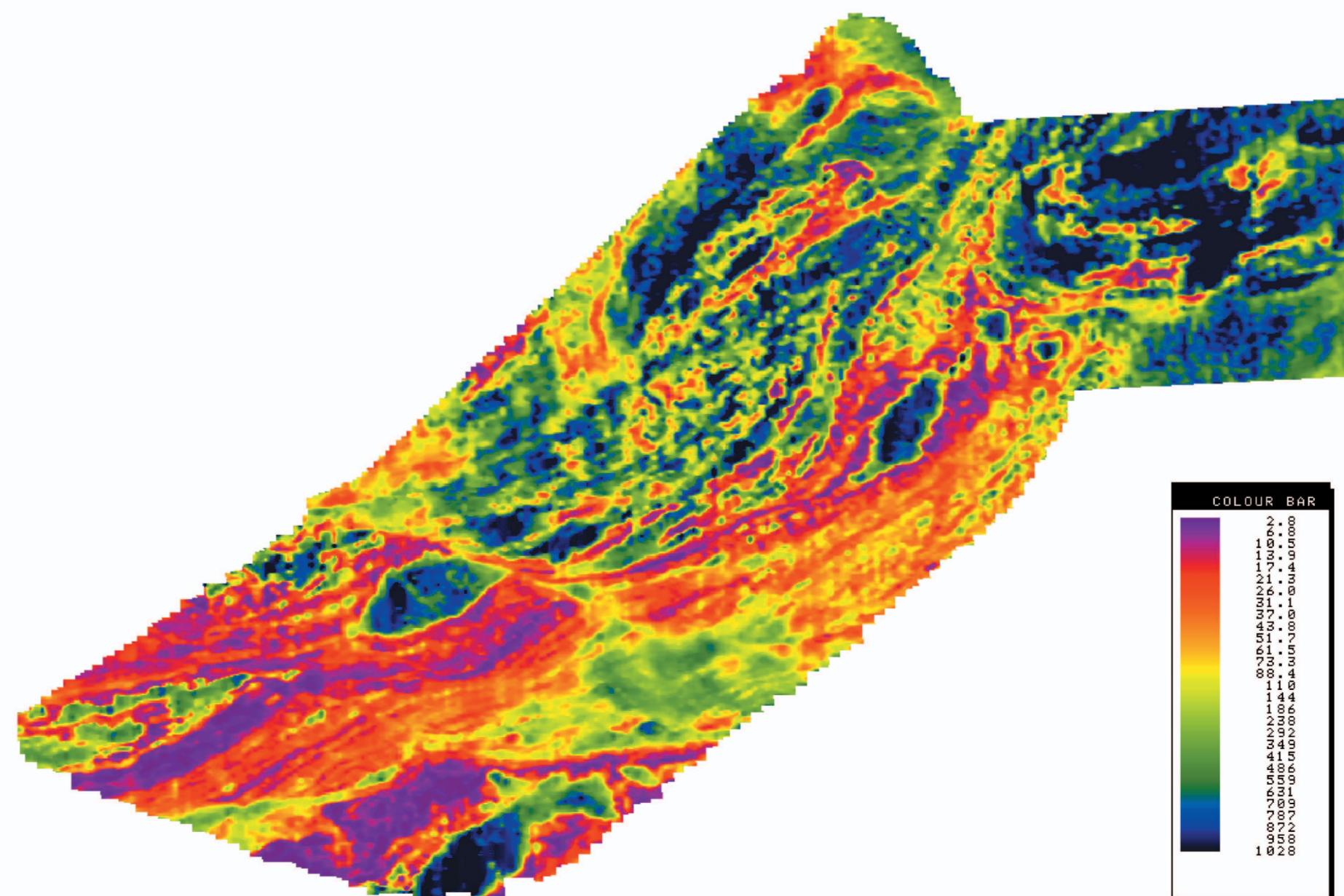


Figure 5: 900 Hz resistivity map of the Rampart-Manley area, Alaska. Resistivity values in ohm-m. Conductive units have low values and are shown in purple and orange on this map.