

Figure 3: Total field magnetics of the Iron Creek area. Magnetic units are in nT.

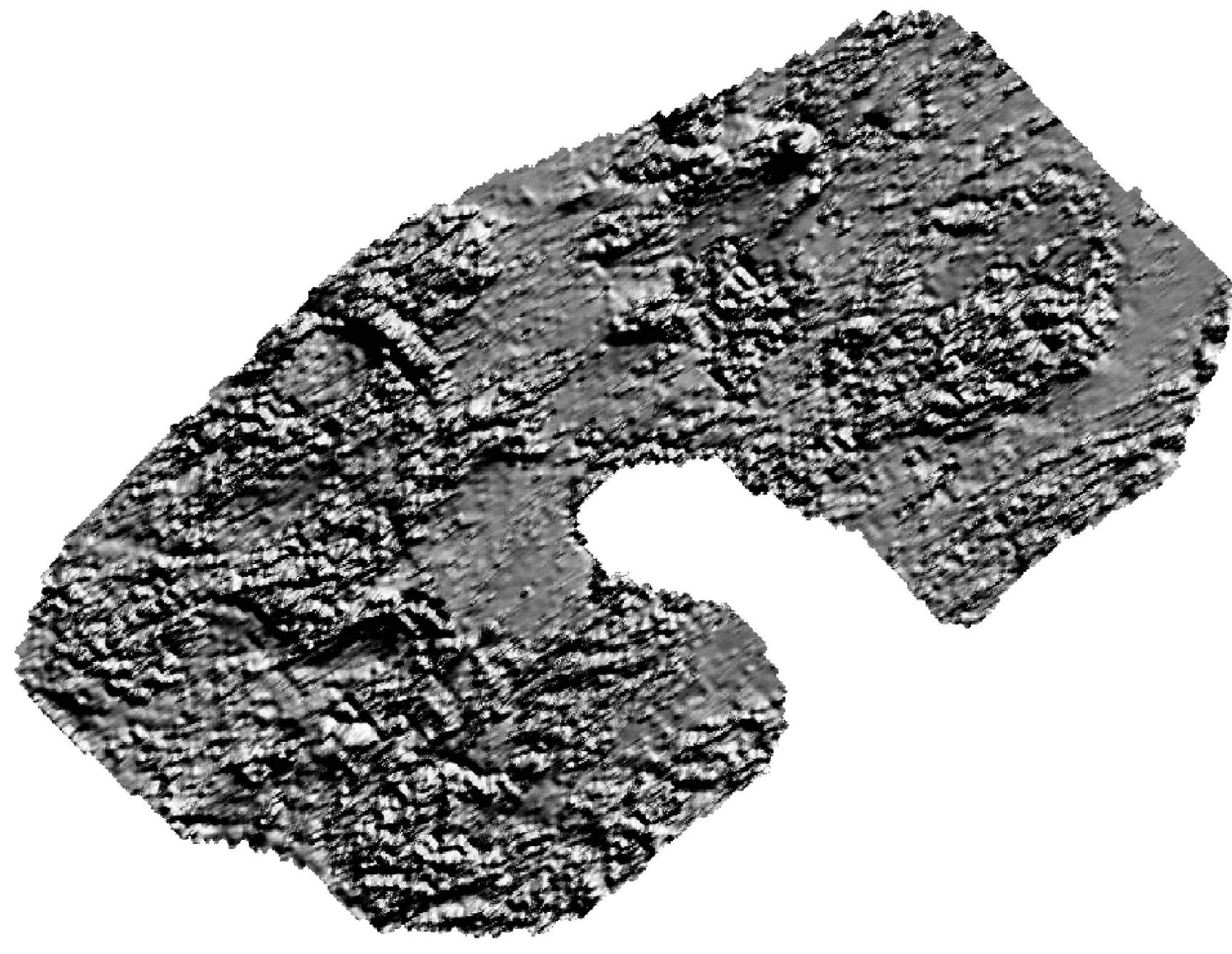


Figure 4: Shadow map of the aeromagnetic data from the Iron Creek area, Alaska. Illumination source is at 27 degrees. High magnetic values appear like the tops of mountains that are hit by sunlight.

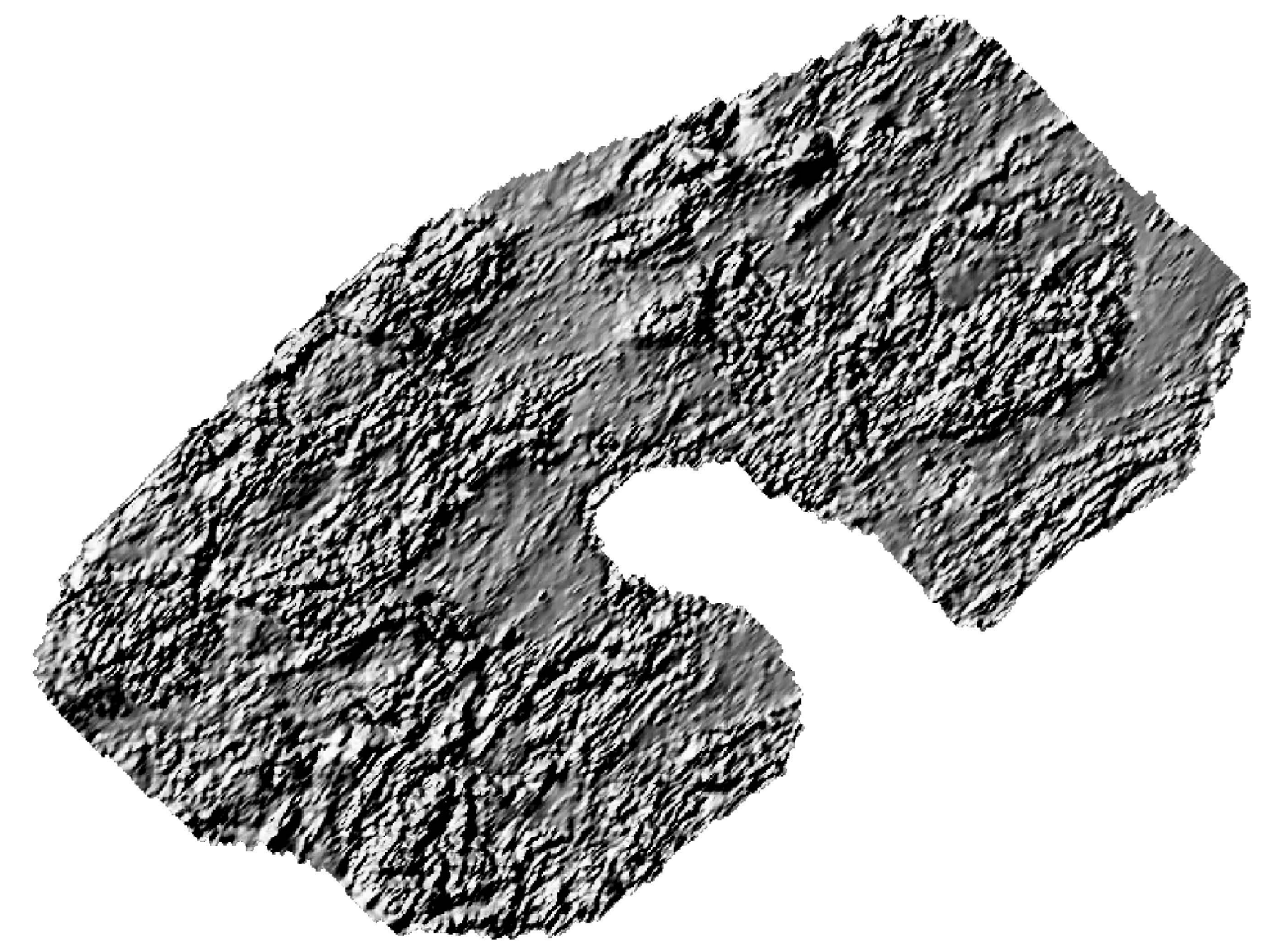


Figure 5: Shadow map of the aeromagnetic data from the Iron Creek area, Alaska. Illumination source is at 303 degrees. High magnetic values appear like the tops of mountains that are hit by sunlight.

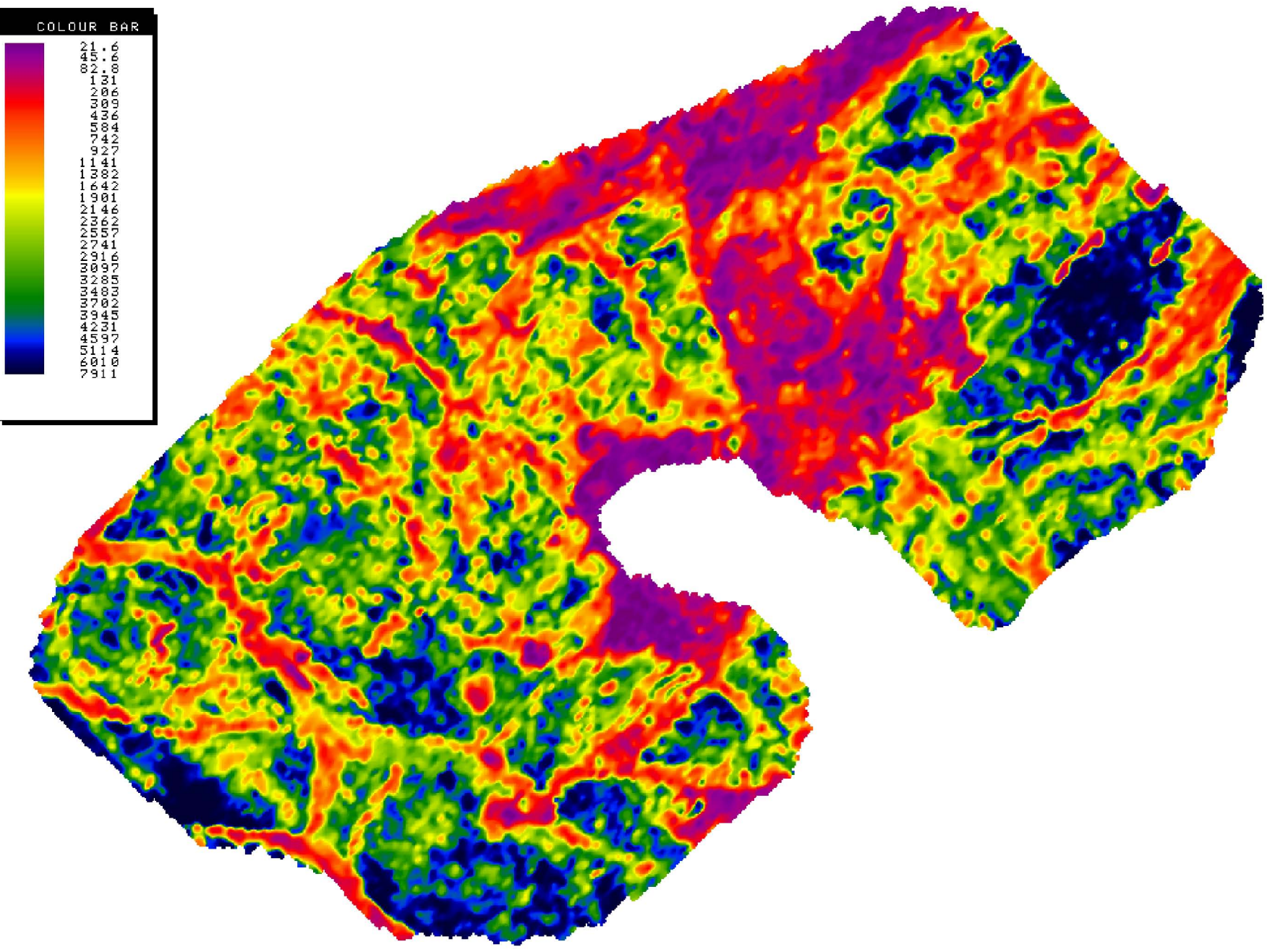


Figure 6: 7200 Hz resistivity map of the Iron Creek area, Talkeetna Mountains Quadrangle. Resistivity values in ohm-m. Conductive units have low numbers and are shown in purple and orange on this map.

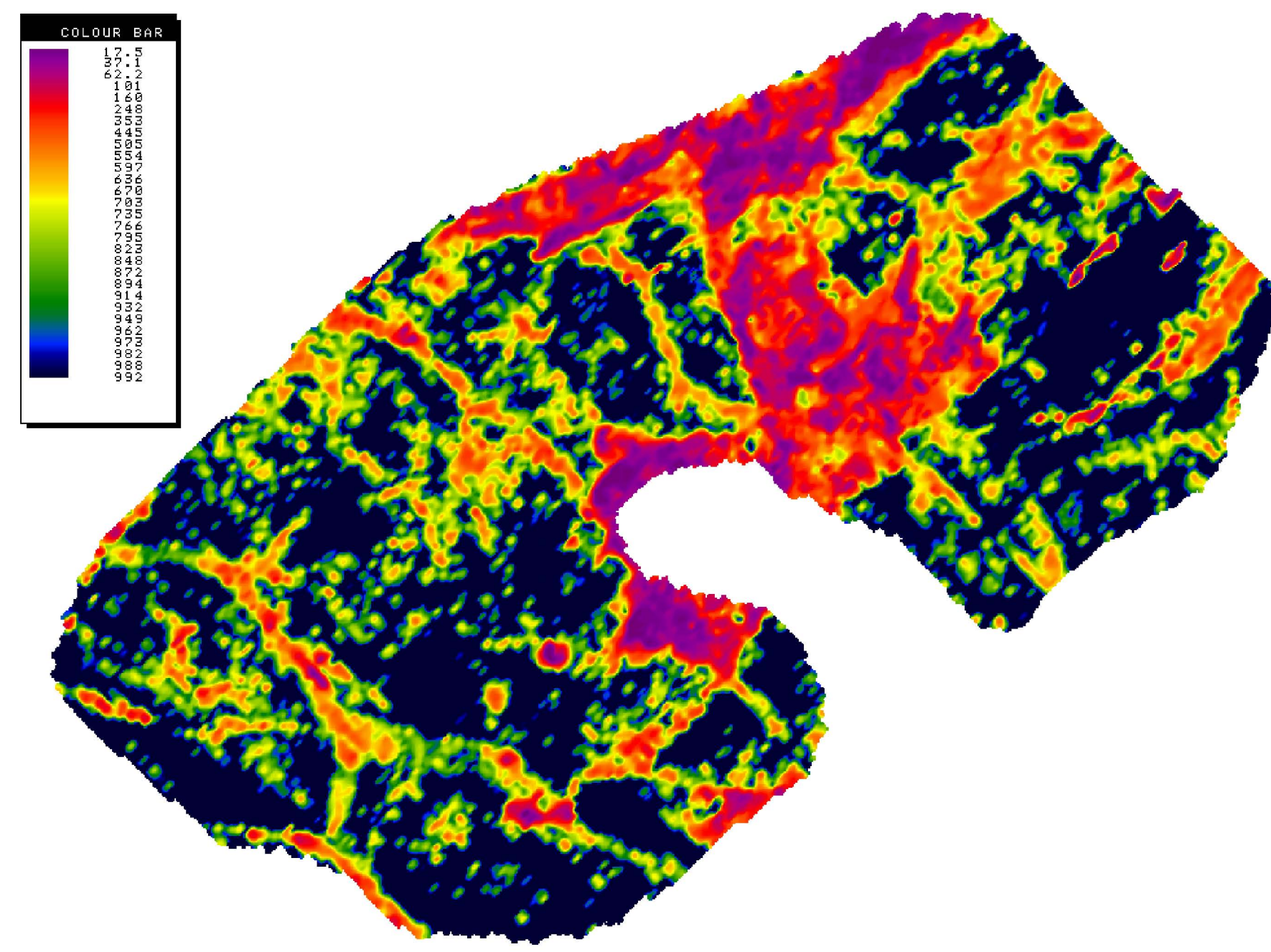


Figure 7: 900 Hz resistivity map of the Iron Creek area, Talkeetna Mountains Quadrangle. Resistivity values in ohm-m. Conductive units have low numbers and are shown in purple and orange on this map.