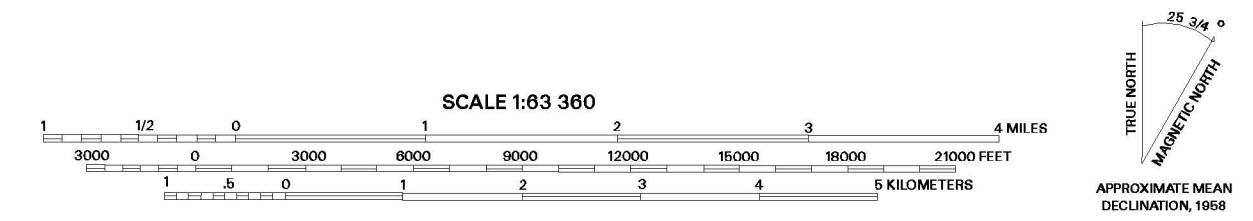
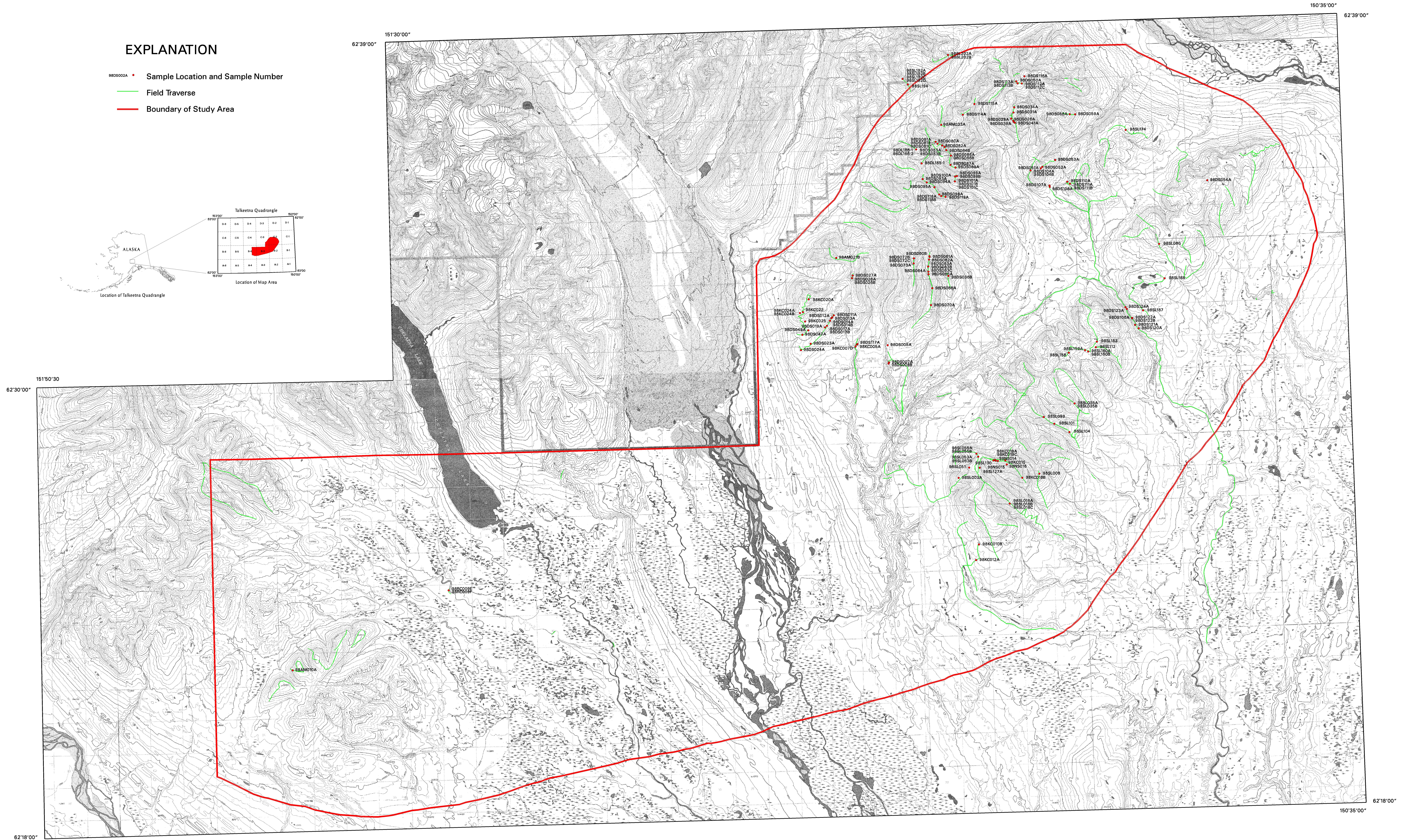
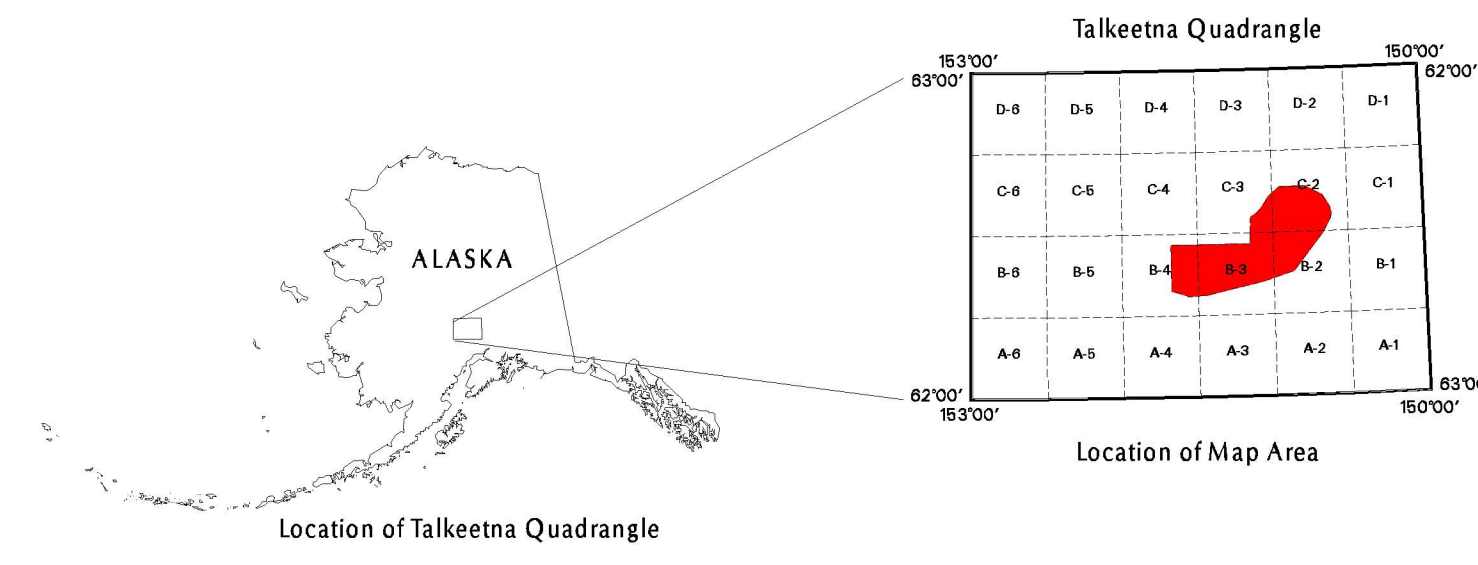


EXPLANATION

- Sample Location and Sample Number
- Field Traverse
- Boundary of Study Area



The State of Alaska makes no express or implied warranties (including warranties for merchantability and fitness) with respect to the character, functions, or capabilities of the electronic services or products or their appropriateness for any user's purposes. In no event will the State of Alaska be liable for any incidental, indirect, special, consequential or other damages suffered by the user or any other person or entity whether from use of the electronic services or products, any failure thereof or otherwise, and in no event will the State of Alaska's liability to the Receiver or anyone else exceed the fee paid for the electronic service or product.

THIS MAP HAS NOT BEEN REVIEWED FOR TECHNICAL CONTENT OR FOR CONFORMITY TO THE EDITORIAL STANDARDS OF DOGS

LOCATION MAP OF ROCK SAMPLES ANALYZED FOR TRACE ELEMENTS, PETERSVILLE (YENTNA) MINING DISTRICT, ALASKA, 1998

by
D.S. Pinney, D.J. Szumigala, J.L. Mayer, S.A. Liss, K.H. Clautice, A.M. McCarthy, D.L. LePain, R.A. Combellick, and N.M. Strandberg
1998



Department of Natural Resources
Division of Geological and Geophysical Surveys
Geologic Data Modeling System