

Figure 3: Total field magnetics of the Fortymile area. Magnetic units are in nT.



Figure 4: Shadow map of the aeromagnetic data from the Fortymile area, Alaska. Illumination source is at N 12 E. High magnetic values appear like the tops of mountains that are hit by sunlight.

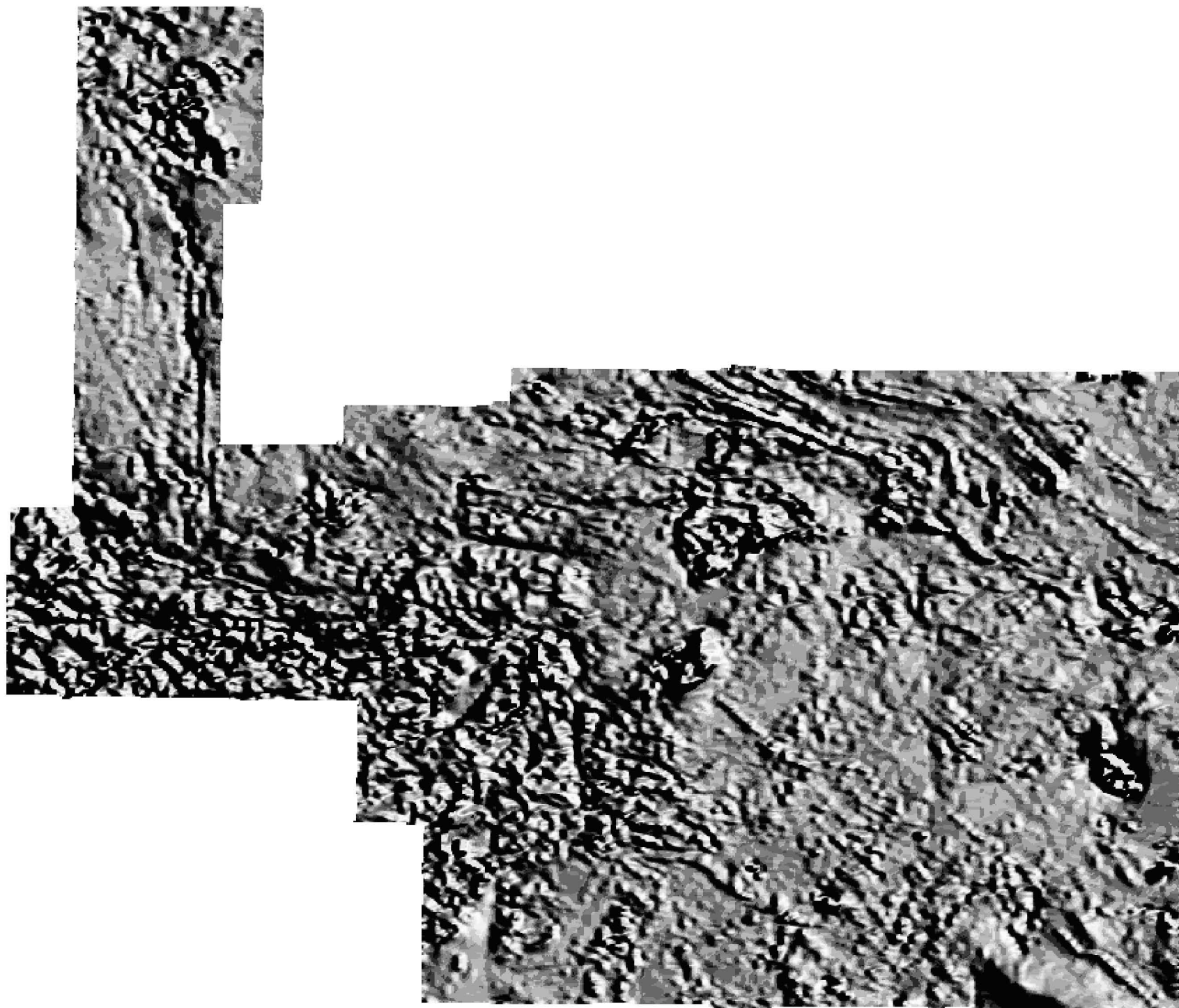


Figure 5: Shadow map of the aeromagnetic data from the Fortymile area, Alaska. Illumination source is at N 69 E. High magnetic values appear like the tops of mountains that are hit by sunlight.

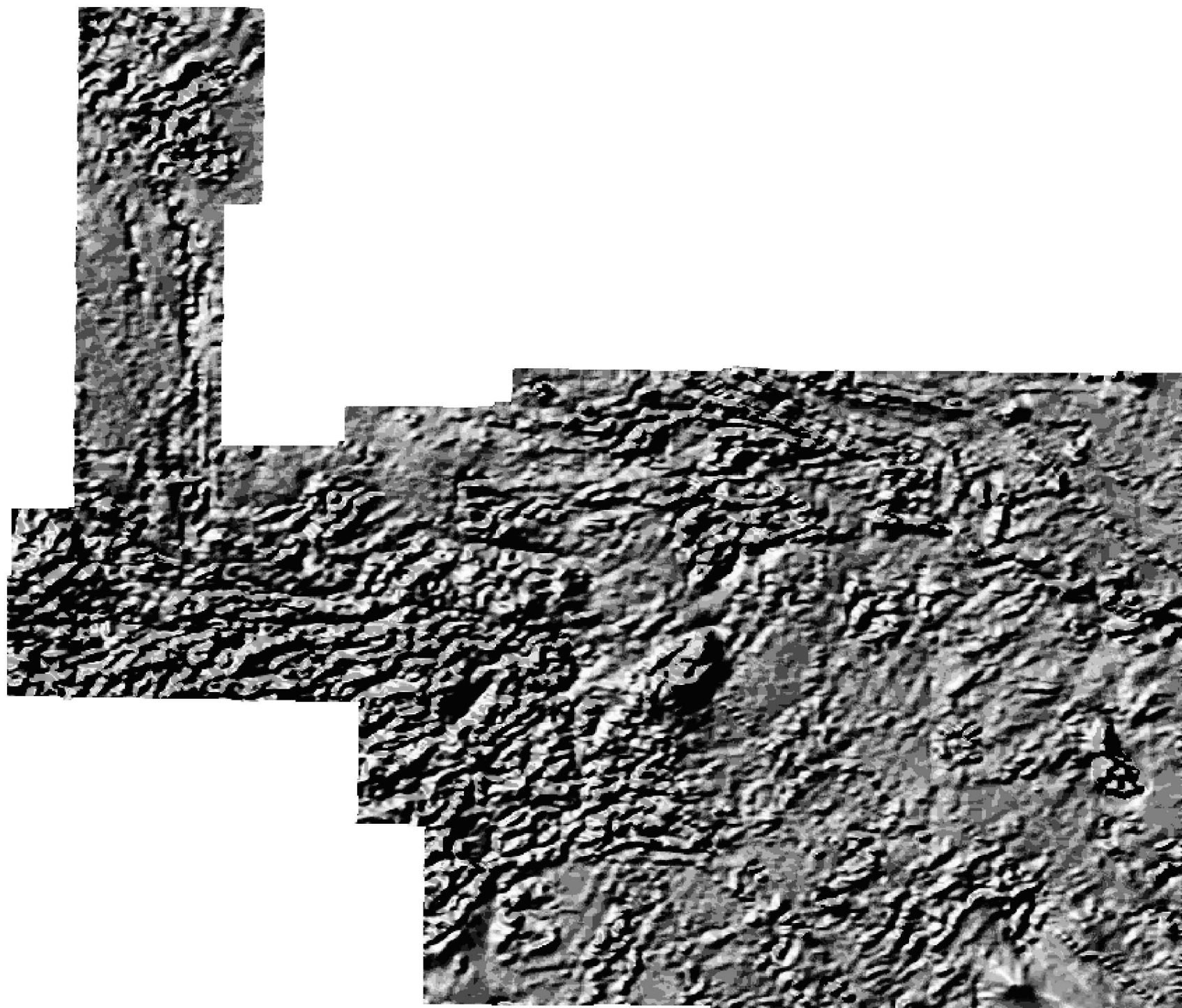
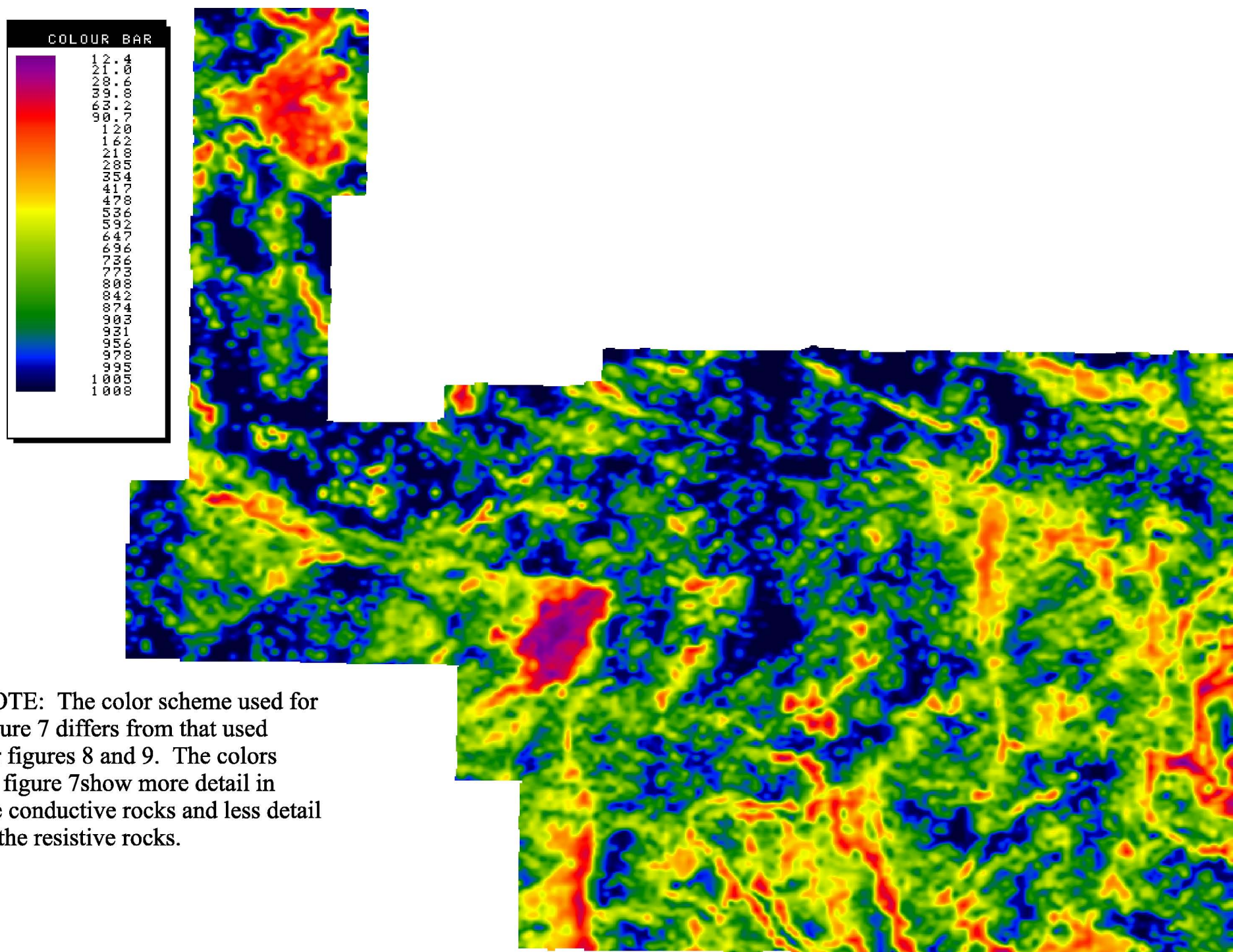


Figure 6: Shadow map of the aeromagnetic data from the Fortymile area, Alaska. Illumination source is at N 48 W. High magnetic values appear like the tops of mountains that are hit by sunlight.



NOTE: The color scheme used for figure 7 differs from that used for figures 8 and 9. The colors on figure 7 show more detail in the conductive rocks and less detail in the resistive rocks.

Figure 7: 900 Hz resistivity map of the Fortymile area. Resistivity values in ohm-m. Conductive units have low numbers and are shown in purple and orange on this map.

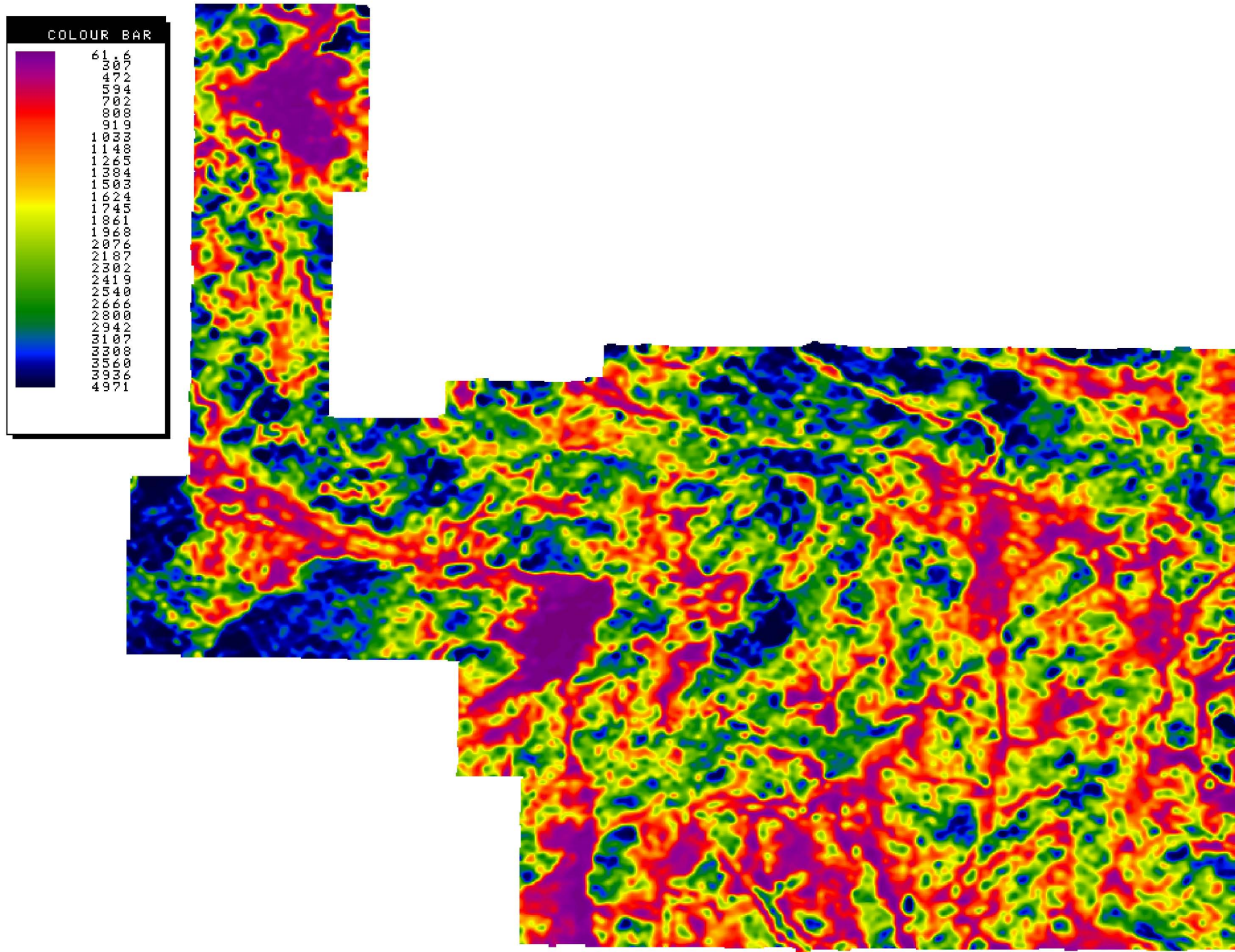


Figure 8: 7200 Hz resistivity map of the Ruby area. Resistivity values in ohm-m. Conductive units have low numbers and are shown in purple and orange on this map.