

Public-Data File 86-81

TUNGSTEN AND ARSENIC CONCENTRATIONS IN ROCK, PAN CONCENTRATE,
AND STREAM SEDIMENT SAMPLES FROM THE STEELE CREEK AREA,
NORTHEAST OF FAIRBANKS.

By

M.S. Robinson

Alaska Division of
Geological and Geophysical Surveys

September, 1986

THIS REPORT HAS NOT BEEN READ BY THE DIRECTOR, HAS NOT RECIEVED
OFFICIAL DGGS PUBLICATION STATUS , AND SHOULD NOT BE QUOTED AS
SUCH

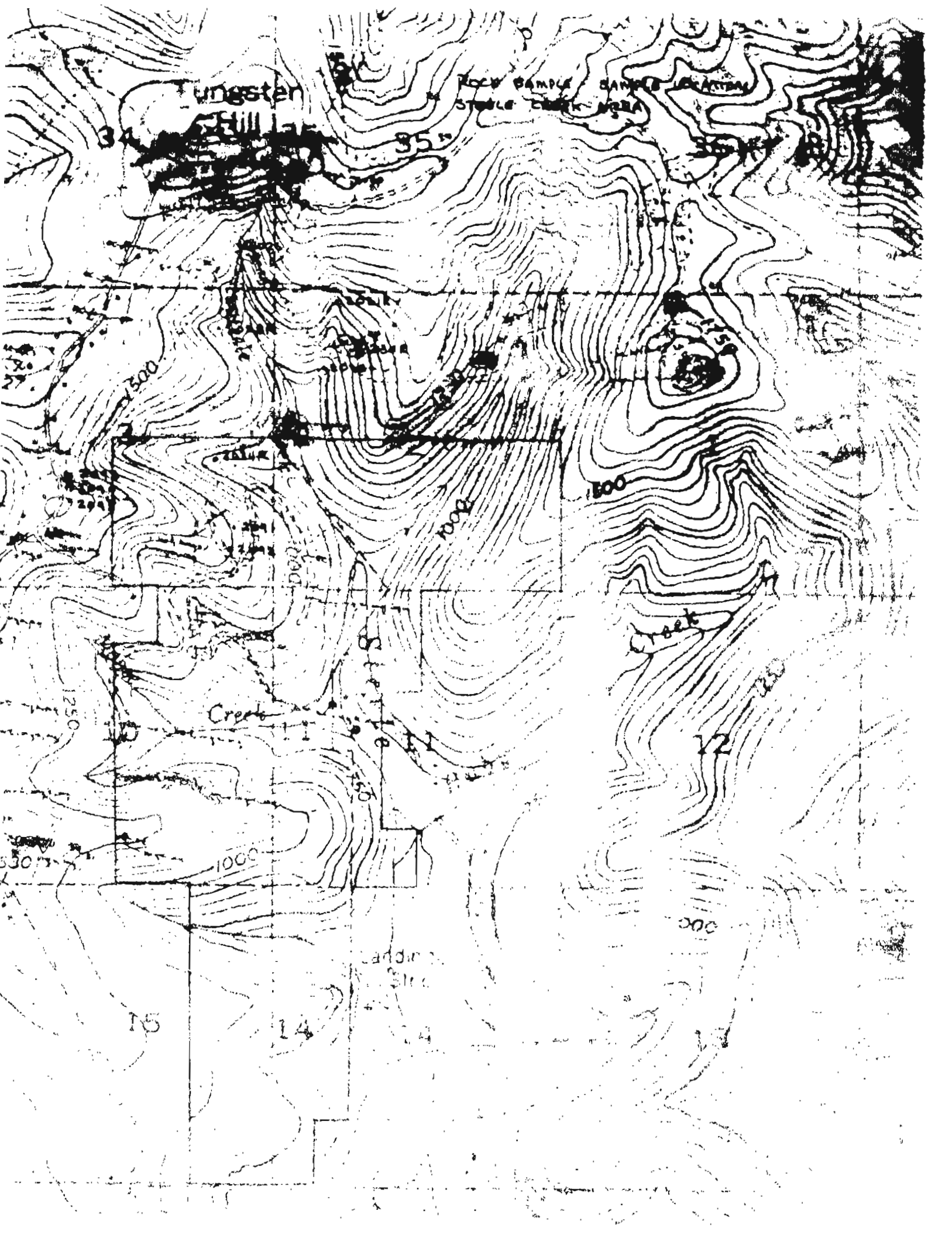
794 University Avenue, Basement
Fairbanks, Alaska 99701

This public data file contains preliminary information on the tungsten and arsenic concentration found in rocks, pan concentrate and stream sediment samples from the Steele Creek area northeast of Fairbanks. This data was collected during the 1981 field season by Alaska Division of Geological and Geophysical Surveys (DGGs) personnel. The samples were collected during field investigations for the DGGs-University of Alaska interior mining districts project.

TUNGSTEN AND ARSENIC VALUES FROM THE STEELE CREEK AREA

SAMPLE NO.	TYPE	W	As
2025	ST. SED	21	260
2026	ROCK	3	63
2027	ST. SED	10	400
2028R	ROCK	5	450
2028S	ST. SED	4	210
2029	PAN CON	170	250
2030R	ROCK	3	20
2030S	ST. SED	9	105
2031R	ROCK	4	400
2031S	ST. SED	25	130
2032	ROCK	3	210
2033	ST. SED	4	28
2034R	ROCK	5	32
2034S	ST. SED	15	35
2035	PAN CON	45	31
2036	ST. SED	3	80
2037	ST. SED	21	30
2040	ST. SED	4	400
2042	ST. SED	4	180
2043	ST. SED	3	250
2044	ST. SED	4	260
2045	ST. SED	5	260
2046	ST. SED	35	300
2047	ST. SED	5	280
2048	ST. SED	30	190
2070	ST. SED	4	75
2071	ST. SED	3	130
2072	ST. SED	2	125
2073	ST. SED	4	260
2074	ST. SED	28	140
2075	ST. SED	4	67
2076	ST. SED	4	450
2077	ST. SED	3	280
2079	ST. SED	4	260
2091	ROCK	2	7
2092	ROCK	3	250
2093	ROCK	675	62
2094	ROCK	1440	67
2095	ROCK	>2000	53
2096	ROCK	5	
2025	ST. SED	21	260
2027	ST. SED	10	400
2028	ST. SED	4	210
1396	ST. SED		70
1399	ST. SED		55
1397	ST. SED		54
1398	ST. SED		
1420	ST. SED		11
1421	ST. SED		100
1423	ST. SED		18
1422	ST. SED		32
1441	ST. SED		130
1440	ST. SED		150
1424	PAN CON	16	

SAMPLE NO.	TYPE	W	As
510	ROCK	30	13
1418	ST. BED		180
1417	ST. BED		>1000
1419	ST. BED		175
1400	ST. SED		>1000
1434	ST. SED		55
1435	ST. SED		150
1436	ST. SED		40
1437	ST. SED		34
1416	PAN CON	3	
1438	PAN CON	3	
1424	PAN CON	16	



Wingster

Hill

Rock Sample
Stable Creek

34

35

500

1000

1000

1250

Creek

Creek

1500

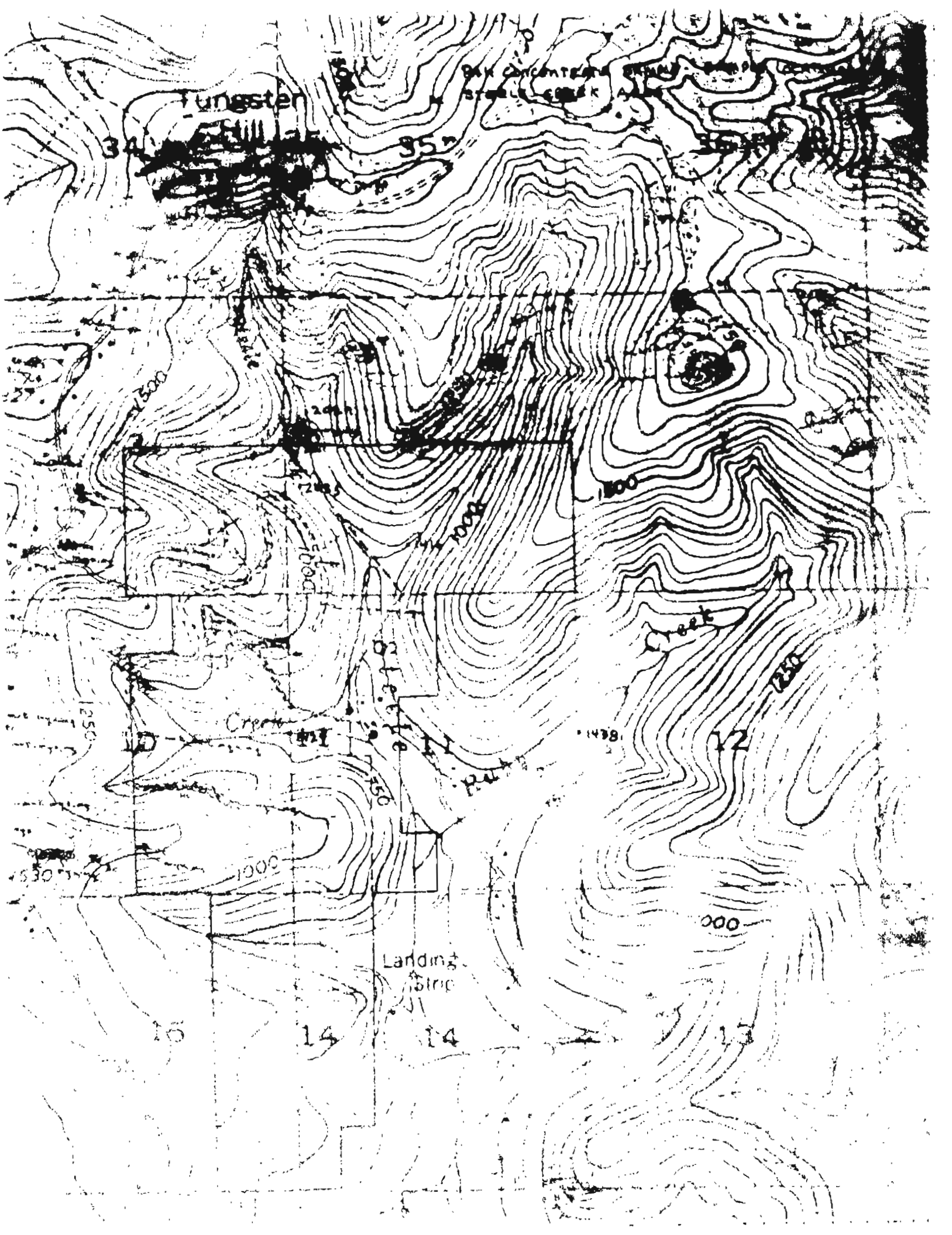
1000

1000

15

14

13



Tungsten

BAY CONCENTRATION STATION
STATION

34

35

1500

2000

2250

2500

1000

1000

1250

Creek

1000

1250

1000

1250

12

1300

1000

Landing Strip

15

14

14

1000

13

