

Public-Data File 86-83

PLAN FOR THE CONTINUATION OF THE ALASKA WATER USE DATA SYSTEM (AWUDS)

By
William A. Petrik

State of Alaska
Department of Natural Resources
Division of Mining and Geology

October 1986

THIS REPORT HAS NOT BEEN REVIEWED FOR
TECHNICAL CONTENT (EXCEPT AS NOTED IN
TEXT) OR FOR CONFORMITY TO THE
EDITORIAL STANDARDS OF DMG.

P.O. Box 772116
Eagle River, Alaska 99577

INTRODUCTION

The Alaska Water Use Data System (AWUDS) is a statewide inventory of water use information. It was developed by the Alaska Department of Natural Resources (DNR), Division of Land and Water Management (DLWM) in cooperation with the U.S. Geological Survey (USGS). The program was transferred from DLWM to the Division of Mining and Geology (DMG). William A. Petrik, Hydrologist I, is the Project Manager.

A major need for AWUDS is to provide sound water-use data upon which to base hydrologic studies and water management decisions. Of the nine reasons for utilizing AWUDS as previously described in a brochure (Appendix A), only two are currently recognized as being relevant to State needs. These needs are:

1. providing information with which to issue a water-right certificate upon expiration of a water-right permit, and
2. evaluating the response of specific hydrologic or hydrogeologic environments to water extraction or diversion activities.

The water resources in Alaska are not developed enough to warrant more detailed water-use analysis.

Presently, the AWUDS program includes 156 water-use sites in Alaska, including 56 towns or municipalities. DMG involvement with AWUDS at this time will concentrate on high priority areas with water metering requirements or DLWM permits and ongoing or imminent water-related problems. The potential for expansion to lower priority Alaskan communities exists with familiarization of new personnel with the program, improving State economic climate and general support of the AWUDS program. Appendix B lists 383

potential water-use sites grouped into four priority categories. During 1987, DMG proposes to track only the 149 sites listed in the priority 1 category and the 21 sites of the priority 2 category that are not operated by the Anchorage Water and Wastewater Utilities (AWWU).

FY 87 WORK TASKS

Duties foreseen to continue the program include:

- maintain manual files of water-use data
- continue data entry into the Land Administration System (LAS) and maintain an estimated 20 designated existing AWUDS files
- limited manipulation of LAS data files to produce reports
- transfer database from LAS to DNR's geoprocessor for further manipulation of data for reports
- develop geoprocessor software and techniques for synthesizing water-use data
- produce periodic progress reports
- produce statewide yearly water-use reports

DMG will make water-use information available to the public, planners, and government agencies, particularly DLWM. This will be accomplished with computer printouts to be made available upon request. Data on these printouts will include date, geographic location, owner, water-use site, monthly or annual water-use figures, Alaska Division of Land (ADL) or LAS water rights numbers, Standard Industrial Classification (SIC) codes, water source type, hydrologic cataloging unit, and State Information District (SID) numbers. Retrievals may be formatted as graphs, pie charts, or histograms using existing geoprocessor software.

WATER-USE CATEGORIES

At this time, the State wishes to emphasize monitoring water-use by public water suppliers. The 149 water users DMG proposes to monitor during FY87 are broken down into various divisions. Within these divisions are categories. Most users have only one primary water-use category. In instances where multiple water-use categories exist, the lesser water-use category is considered secondary and listed as such. Some users have more than one secondary water-use category. The following is a list of water-use categories and the respective number of users in each:

<u>Division</u>	<u>SIC code range</u>	<u>Number of primary users</u>	<u>Number of secondary users</u>
A. Agriculture, Forestry, & Fishing	000-999	31	11
B. Mining	1000-1499	19	-
C. Construction	1500-1799	1	-
D. Manufacturing	2000-3999	17	2
E. Transportation & Public Utilities	4000-4999	76	1
F. Wholesale Trades	5000-5199	1	-
G. Retail Trade	5200-5999	-	-
H. Finance, Insurance, & Real Estate	6000-6799	10	7
I. Services	7000-8999	10	3
J. Public Administration	9100-9799	3	-
K. Nonclassifiable Establishments	9900-9999	-	-

SCHEDULE OF DATA COLLECTION

Most water-use data will be obtained from DLWM. The State water rights program keeps updated records of most water sources or suppliers we wish to monitor. A few water users will submit data directly to DMG. Water-use data is reported monthly, or quarterly, depending on permit conditions.

SCHEDULE OF DATA REPORTS

A DMG Public Data File report or Report of Investigations containing water-use information for a particular calendar year will be available by the

end of the following year. In addition, quarterly progress reports will be prepared.

EXPLANATION OF HEADINGS FOR APPENDIX B.

OBS	This is a simple sequential site number
WATER RIGHTS NUMBER	Origination system of each permit or certificate, ADL or LAS, and the case number assigned to each
PRIORITY	Proposed preferential heirarchy (explained in depth below)
METERING REQUIRED	DLWM requires that this permit or certificate holder submit metered water-use data on a monthly or quarterly basis. An asterisk (*) indicates that metering is required as a permit, or certificate condition
NAME OF OWNER	Name of permit or certificate holder or proposed water user to be monitored
LOCATION	Geographic name location of the point of water use

PRIORITY CLASSES

Four priority classes exist. The first priority class includes all sites for which a DLWM water-use permit has been issued that requires metering data to be submitted to the issuing agency, except AWWU sites. The priority 2 class includes water users in present or planned DMG or USGS project areas. The locations proposed for monitoring include the Auke Nu area near Juneau, the Anchorage Bowl, Eagle River, Peters Creek, Palmer, Wasilla, Houston, and the North Kenai area, and any other non-AWWU water-user listed in priority 2. Priority 3 class includes those water-users which are established in the existing AWUDS database. Priority 4 class includes water users which have submitted water-use data to the AWUDS program that has not been entered into the database. Also included in the fourth class are water-users already certified by DLWM.

WHAT KINDS OF WATER USE DATA ARE INCORPORATED INTO AWUDS?

AWUDS is composed of four interconnected components:

- Water use data by location and quantity reported by city, borough, census district, and hydrologic unit; including public supply, industrial, mining, hydroelectric, commercial, agricultural, and instream flow uses
- Water rights data including location of use, type of use, amount appropriated, priority date, and source
- Well log data such as depth of well, water level, flow and capacity, and name of driller
- A dam inventory with statewide data on dam location, dimension, capacity, use, and hazard classification of man-made impoundments



WHO MAINTAINS THE WATER USE DATA SYSTEM?

Although many state, federal, and local agencies participate in the Alaska Water Use Data System, the Alaska Department of Natural Resources (DNR), Division of Land and Water Management, and the U.S. Geological Survey are the principal agencies that maintain the Alaska Water Use Data System (AWUDS). AWUDS is a part of DNR's computerized data management system, the Alaska Land and Resources System (ALARS).

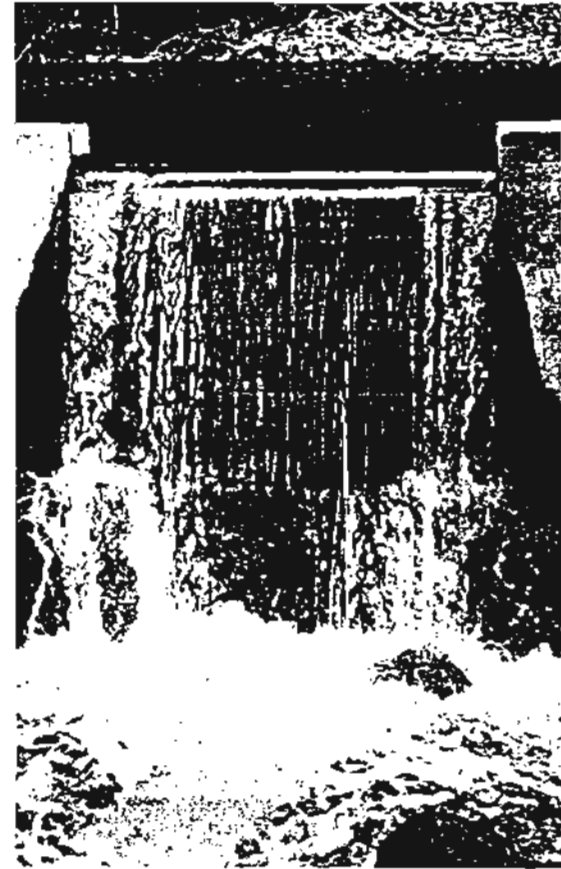
FOR MORE INFORMATION:

Alaska Department of Natural Resources
Division of Land & Water Management
Water Management Section
Pouch 7-005
555 Cordova Street
Anchorage, Alaska 99510
907-276-2653

Alaska District,
U.S. Geological Survey
Water Resources Division
1209 Orca Street
Anchorage, Alaska 99501
907-271-4153

AWUDS

THE ALASKA WATER USE DATA SYSTEM



APPENDIX A



THE ALASKA WATER USE DATA SYSTEM

(AWUDS) establishes a statewide inventory of water use information. It was developed by the Alaska Department of Natural Resources Division of Land and Water Management, in cooperation with the United States Geological Survey. The inventory will locate and quantify:

- Sources of water supply
- Where and how the water is being used
- How much is returned for other uses

A major goal of AWUDS is to promote sound economic development for Alaska and its citizens by assuring that state, federal, and local agencies, and the private sector have good water use information for making informed decisions and evaluations for water projects.

HOW IS DATA COLLECTED?

Data is being collected by field surveys and questionnaires mailed to water users. Special emphasis is given to types of useful and important data not previously collected and available from other sources including government agencies.

Existing water use data accumulated by DNR and other agencies will be incorporated into AWUDS.

WHY AWUDS?

Water use data is scattered or often nonexistent for many regions and types of water uses. Although various local, state, and federal agencies have collected data on different aspects of water use, compiling existing and newly gathered data into a central repository greatly increases its usefulness for:

- Water budget studies*
- Projecting future water demands*
- Quantifying uses in order to allocate water resources*
- Providing data for industrial plant siting and suitable supply development*
- Determining present water uses and helping managers in projecting future water demands*
- Minimizing duplication efforts*
- Determining periods of water withdrawal and return by use*
- Calculating water consumption*
- Calculating water loss through system leakage*

Expanding commercial and industrial development, places new demands on water supply capabilities. Good water use data, combined with water availability information, aids in decision-making, and helps areas experiencing critical water shortages.



Water use data supports evaluations of developed water resources and planning for new water supply development.

Through demand modeling, water use data assists in planning the design, extensions, and rate structuring of water systems.

Water use in Alaska is granted through the appropriation of the water rights doctrine: first come, first served. Water use data is very useful in quantifying and adjudicating water rights.

Detailed studies on water use and the factors which affect it will give data necessary for industrial plant siting and suitable supply development, such as in the high water use seafood processing industry.

APPENDIX B

1

AWJDS PROPOSAL

PRIORITY 1 LIST

OBS	WATER RIGHTS NUMBER	PRIORITY	METERING REQUIRED	NAME OF OWNER	LOCATION
1	ADL 202928	1	*	AK PETROCHEMICAL CO	VALDEZ
2	LAS 002184	1	*	ALEUT CORP. - MIDTOWN ESTATES	PALMER
3	LAS 002203	1	*	ALEUT CORP. - MIDTOWN ESTATES	PALMER
4	LAS 002183	1	*	ALEUT CORP. - MIDTOWN ESTATES	PALMER
5	LAS 001309	1	*	ALPINE WOODS HOMEOWNERS ASSOC.	ANCHORAGE
6	ADL 402539	1	*	ALYESKA PIPELINE PRODUCTION CO-PUMP 6	YUKON RIVER
7	LAS 006744	1	*	ARA/OUTDOOR WORLD LTD	FT.HAMLIN AREA
8	LAS 001299	1	*	ARCO ALASKA, INC.	KUPARUK RIVER
9	LAS 002761	1	*	ARCO ALASKA, INC.	KUPARUK RIVER
10	LAS 002762	1	*	ARCO ALASKA, INC.	KUPARUK RIVER
11	LAS 002763	1	*	ARCO ALASKA, INC.	KUPARUK RIVER
12	LAS 002764	1	*	ARCO ALASKA, INC.	KUPARUK RIVER
13	LAS 002765	1	*	ARCO ALASKA, INC.	KUPARUK RIVER
14	LAS 002766	1	*	ARCO ALASKA, INC.	KUPARUK RIVER
15	LAS 002767	1	*	ARCO ALASKA, INC.	KUPARUK RIVER
16	LAS 002768	1	*	ARCO ALASKA, INC.	KUPARUK RIVER
17	LAS 002769	1	*	ARCO ALASKA, INC.	KUPARUK RIVER
18	LAS 002770	1	*	ARCO ALASKA, INC.	KUPARUK RIVER
19	LAS 000208	1	*	ARMSTRONG-KETA, INC.	PORT ALEXANDER
20	LAS 000780	1	*	B & J SURPLUS, INC.	WASILLA
21	LAS 000681	1	*	BASKIN, ABBY	PT. MACKENZIE
22	LAS 000682	1	*	BASKIN, MERLENE M.	PT. MACKENZIE
23	ADL 101720	1	*	BONNIE BRAE CORP.	JUNEAU
24	LAS 001800	1	*	BRUCE, G.A. - FALCON LAKE	PT. MACKENZIE W
25	LAS 001174	1	*	CERRIER, KING & CERRIER	GIRDWOOD
26	LAS 003255	1	*	CHEVRON USA, INC.	KENAI
27	ADL 211010	1	*	CHITINA, COMMUNITY	CHITINA
28	LAS 001936	1	*	CONOCO INC	MILNE POINT
29	LAS 001937	1	*	CONOCO INC	MILNE POINT
30	LAS 001938	1	*	CONOCO INC	MILNE POINT
31	ADL 215411	1	*	COOK INLET AQUACULTURE ASOC.	EKLUTNA LAKE
32	LAS 002025	1	*	COOK INLET REGION, INC.	WRANGELL INST.
33	LAS 001638	1	*	COOK INLET REGION, INC.	WRANGELL INST.
34	ADL 206632	1	*	CRESTBROOK WATER ASSOCIATION	ANCHORAGE
35	LAS 003025	1	*	CROSS CREEK INC	WASILLA
36	LAS 000865	1	*	DAWN DEVELOPMENT CORP.	PETERS CREEK
37	LAS 000863	1	*	DAWN DEVELOPMENT CORP.	PETERS CREEK
38	LAS 000864	1	*	DAWN DEVELOPMENT CORP.	PETERS CREEK
39	ADL 046270	1	*	DIAMOND 'E' FISHERIES, INC.	EGEGIK
40	ADL 201554	1	*	DIV ADM CONTR & FAC OFC, DFG	MOOSE PASS
41	ADL 206780	1	*	DIV ADM CONTR & FAC OFC, DFG-SHIP CK	ANCHORAGE
42	LAS 002775	1	*	DOUBLE H CORPORATION - SUNSET VIEW	WASILLA/PT.Mac
43	LAS 000259	1	*	EKLUTNA UTLS INC.-PARKVIEW TERRACE	EAGLE RIVER
44	ADL 210807	1	*	EKLUTNA UTLS INC.-THUNDERBIRD HEIGHTS	EKLUTNA
45	ADL 200706	1	*	EKLUTNA UTLS INC.-THUNDERBIRD HEIGHTS	EKLUTNA
46	ADL 206718	1	*	ENSERCH EXPLORATION, INC.	CHULITNA
47	LAS 001059	1	*	ERU, INC. - HYLEN SUBD.	EAGLE RIVER
48	LAS 003860	1	*	FAIRBANKS MUNICIPAL UTL SY,CTY	FAIRBANKS

AWJIS PROPOSAL

PRIORITY 1 LIST

ORS	WATER RIGHTS NUMBER	PRIORITY	METERING REQUIRED	NAME OF OWNER	LOCATION
49	LAS 000450	1	*	FAIRBANKS NORTH STAR, BOR	FAIRBANKS
50	LAS 000451	1	*	FAIRBANKS NORTH STAR, BOR	FAIRBANKS
51	LAS 000452	1	*	FAIRBANKS NORTH STAR, BOR	FAIRBANKS
52	LAS 003024	1	*	FISHERMAN'S PACKING, INC.	KENAI
53	LAS 003515	1	*	FITZGERALD, JAMES D.- CHENA H.S. RD.	FAIRBANKS AREA
54	LAS 000207	1	*	FLETCHER, HENRY MERRITT	PT. ARMSTRONG
55	LAS 005419	1	*	FOCUS ENERGY CORPORATION - STREAM	KODIAK
56	LAS 001889	1	*	FRED DIV RGN 3, DFG	BIG LAKE
57	ADL 101528	1	*	GAIN, JEAN	DAIRY
58	LAS 002888	1	*	GARDING, MICHAEL C.-VILLAGE SOUTH SUB	EKLUTNA
59	LAS 002372	1	*	GENSBURG, AVRON S.-ANCIENT TREES EST.	WASILLA
60	LAS 001819	1	*	GOLDEN ALASKA CORP.	AUKE BAY
61	LAS 001346	1	*	GRO-FISH, INC.	SANTA ANNA
62	LAS 001201	1	*	HAINES, EILEEN MARIE	PT. MCKENZIE W
63	LAS 001203	1	*	HAINES, EILEEN MARIE	PT. MCKENZIE W
64	LAS 000930	1	*	HERREID, GORDON W.-PEARL CREEK FARM	FAIRBANKS AREA
65	LAS 000166	1	*	HICKEY, KENNETH ROLET	PT. MACKENZIE
66	LAS 000164	1	*	HICKEY, KENNETH ROLET	PT. MACKENZIE
67	ADL 202909	1	*	HILLSIDE PARK HOMEOWNERS ASSOC.	ANCHORAGE
68	LAS 002530	1	*	HOMER ELECTRIC ASSOC., INC.	SOLDOTNA
69	LAS 000895	1	*	HOONAH, CTY	HOONAH
70	LAS 000896	1	*	HOONAH, CTY	HOONAH
71	LAS 000897	1	*	HOONAH, CTY	HOONAH
72	LAS 002082	1	*	JOHNSON, KARL BURTON	WASILLA WEST
73	ADL 102857	1	*	JUNEAU, C&B - MENDENHAVEN	JUNEAU
74	ADL 062230	1	*	JUNEAU, C&B - SALMON CREEK	JUNEAU
75	ADL 203544	1	*	KENNEY LAKE COMMUNITY LEAGUE	KENNEY LAKE
76	LAS 001145	1	*	KODIAK, CTY	KODIAK
77	ADL 062233	1	*	LAGEN, WILLIAM S.	AKUTAN
78	ADL 062231	1	*	LAGEN, WILLIAM S.	AKUTAN
79	LAS 003019	1	*	LAKE POINTE HOMEOWNERS ASSOC., INC.	WASILLA
80	ADL 101021	1	*	LAND RCS OF AK	N. DOUGLAS ISL
81	LAS 002375	1	*	LEUENBERGER LORAS D.	PALMER
82	LAS 006523	1	*	LOWELL POINT MARINA, INC.	SEWARD
83	LAS 006524	1	*	LOWELL POINT MARINA, INC.	SEWARD
84	LAS 002080	1	*	MAIER, ROBERT J. - POTTER VALLEY	ANCHORAGE
85	LAS 001487	1	*	MASTEN ARLIE ET AL-SHERWOOD ESTATES#2	PALMER
86	LAS 003022	1	*	MATANUSKA ELECTRIC ASSOC INC	BIG LAKE
87	ADL 081347	1	*	MEYERS & MEYERS CONST CO.	CHUGIAK
88	ADL 100088	1	*	MEYERS CHUCK AQUACULTURE ASSOC., INC.	MEYERS CHUCK
89	LAS 004072	1	*	MEYERS CHUCK AQUACULTURE ASSOC., INC.	MEYERS CHUCK
90	LAS 001138	1	*	MEYERS CHUCK AQUACULTURE ASSOC., INC.	MEYERS CHUCK
91	LAS 004071	1	*	MEYERS CHUCK AQUACULTURE ASSOC., INC.	MEYERS CHUCK
92	LAS 001491	1	*	MORRIS, STANLEY M.	WASILLA
93	ADL 200158	1	*	NEW FRONTIER MILK INC.	PALMER
94	ADL 101526	1	*	NEW TREADWELL MINING CO., INC.	TREADWELL
95	LAS 002151	1	*	NLT WATER COMPANY, INC.	WASILLA/PT. Mac
96	ADL 209576	1	*	NORFOLK UTLS INC.-VALLEY RANCHETTES	EAGLE RIVER

APPENDIX B

3

AWIDS PROPOSAL

PRIORITY 1 LIST

OBS	WATER RIGHTS NUMBER	PRIORITY	METERING REQUIRED	NAME OF OWNER	LOCATION
97	LAS 004221	1	*	NORTH POLE,CTY	NORTH POLE
98	ADL 074176	1	*	NORTHWOODS CO.	PETERS CREEK
99	LAS 002797	1	*	OLSON, H. W. ET AL	WASILLA WEST
100	ADL 202910	1	*	OMLIN, PAUL M.	WASILLA W.
101	LAS 002102	1	*	ORTNER, WALTER P. - SUBD.	PALMER
102	LAS 002876	1	*	OSOWSKI, LEON JAMES	ALEX. CREEK
103	ADL 204021	1	*	PACIFIC ALASKA LIGHTING CO.	KENAI
104	LAS 003017	1	*	PALMER,CTY	PALMER
105	LAS 000844	1	*	PELICAN UTL CO.	PELICAN
106	ADL 209582	1	*	PETER PAN SEAFOODS, INC.	DILLINGHAM
107	ADL 209583	1	*	PETER PAN SEAFOODS, INC.	DILLINGHAM
108	ADL 209682	1	*	PETER PAN SEAFOODS, INC.	DILLINGHAM
109	ADL 209581	1	*	PETER PAN SEAFOODS, INC.	PETERSBURG
110	LAS 006550	1	*	PETERSBURG,CTY	PORT LIONS
111	LAS 003357	1	*	PRINCE WILLIAM SOUND AQUACUL.	ESTHER LAKE
112	LAS 001312	1	*	ROYAL PACIFIC FISHERIES, INC.	KENAI
113	LAS 001117	1	*	SABA SR., JOHN H.	WEST JUNEAU
114	LAS 000002	1	*	SAINTE PAUL,CTY	SAINTE PAUL
115	LAS 003311	1	*	SEWARD,CTY	SAXMAN
116	ADL 044121	1	*	SCHIKORA, GARY M.-AK. R.R.	ANCHORAGE
117	LAS 000327	1	*	SEWARD,CTY	SEWARD
118	ADL 210826	1	*	SLEEPER, INC.-W.O.PIPPEL SUBD. L1 R2	EAGLE RIVER
119	LAS 000835	1	*	SMITH, PETER EVAN	PORT ARMSTRONG
120	LAS 000209	1	*	SOLDOTNA,CTY	SOLDOTNA
121	ADL 214896	1	*	SOTH SE REGION AQUACULTURE	NEETS CREEK
122	ADL 103273	1	*	SOTH SE REGION AQUACULTURE	NEETS CREEK
123	LAS 000761	1	*	SOUTH-PARK TERRACE HOMEOWNERS	ANCHORAGE
124	ADL 209628	1	*	STANTON, BARTON L. - OLD MILL SUBD.	SEWARD
125	LAS 003810	1	*	STARTR TRUCKING CO, INC.	WASILLA
126	LAS 000587	1	*	TIERNEY, SUSAN ANN - SPRING	MT. SPURR
127	LAS 003208	1	*	TIERNEY, SUSAN ANN - SPRING	MT. SPURR
128	LAS 003209	1	*	TOGIAK FISHERIES, INC.	TOGIAK
129	LAS 001681	1	*	TURNER COMPANY - EQUESTRIAN SUBD.	PALMER
130	LAS 001270	1	*	TWIN CREEK SALMON RANCH, INC.	SCOW BAY AREA
131	ADL 100813	1	*	UNION OIL COMPANY OF CA.	KENAI
132	ADL 203480	1	*	VALDEZ FISHERIES DEV. ASSOC., INC.	VALDEZ
133	LAS 001142	1	*	VAN RUSKIRK, MICHAEL E.-SHEENA MAY	WASILLA
134	LAS 002917	1	*	WALDEC ENTERPRISES, INC.	PETERS CREEK
135	LAS 001177	1	*	WALLACE, THILMAN F.	EAGLE RIVER
136	ADL 200116	1	*	WASILLA WEST PROPERTY OWNERS ASSOC.	WASILLA
137	ADL 204276	1	*	WASILLA, CITY	WASILLA
138	ADL 209104	1	*	WASILLA, CITY	WASILLA
139	LAS 001541	1	*	WASILLA, CITY	WASILLA
140	LAS 001141	1	*	WATTS, JESSE F.	MONTANA CREEK
141	LAS 003473	1	*	WELLINGFIELD WEST LAND CO., INC.-SUB.	PALMER
142	LAS 002903	1	*	WHITMORE, RALPH E. JR.- TIMBER HILLS	PALMER
143	LAS 001237	1	*	WHITTIER, CITY	WHITTIER
144	LAS 002531	1	*	WHITTIER, CITY	WHITTIER

AWUDS PROPOSAL

PRIORITY 1 LIST

OBS	WATER RIGHTS NUMBER	PRIORITY	METERING REQUIRED	NAME OF OWNER	LOCATION
145	LAS 002532	1	*	WHITTIER, CITY	WHITTIER
146	LAS 002533	1	*	WHITTIER, CITY	WHITTIER
147	LAS 000319	1	*	WITMAN, HARRY F.--FOREST PARK MOB HOME	EAGLE RIVER
148	ADL 206676	1	*	WOODCOCK, HOWARD L.	COPPER RIVER
149	LAS 000772	1	*	YOUNG, THOMAS A.	TALKEETNA

APPENDIX B

5

AWJDS PROPOSAL

PRIORITY 2 LIST

OBS	WATER RIGHTS NUMBER	PRIORITY	METERING REQUIRED	NAME OF OWNER	LOCATION
150	ADL 080449	2	*	AK USA FEDERAL CREDIT UNION	EAGLE RIVER
151		2	*	ALASKA ZOO	ANCHORAGE
152	LAS 001026	2	*	ANCHORAGE PARKS & RECREATION (HILTOP)	ANCHORAGE
153	LAS 001389	2	*	ANCHORAGE PARKS & RECREATION, MUN.	ANCHORAGE
154	LAS 000563	2	*	ANCHORAGE SCHOOL DISTRICT-BEAR VALLEY	ANCHORAGE
155	LAS 000636	2	*	ANCHORAGE SCHOOL DISTRICT-RAVENWOOD	EAGLE RIVER
156	LAS 002569	2	*	ANCHORAGE, MUN (AWWU) EKLUTNA RESERV	EKLUTNA
157	ADL 201881	2	*	ANCHORAGE, MUN (AWWU) ER#01	EAGLE RIVER
158	ADL 215028	2	*	ANCHORAGE, MUN (AWWU) ER#02	EAGLE RIVER
159	LAS 000369	2	*	ANCHORAGE, MUN (AWWU) ER#02	EAGLE RIVER
160	ADL 202708	2	*	ANCHORAGE, MUN (AWWU) ER#03	EAGLE RIVER
161	ADL 201526	2	*	ANCHORAGE, MUN (AWWU) ER#04	EAGLE RIVER
162	ADL 051573	2	*	ANCHORAGE, MUN (AWWU) ER#04	EAGLE RIVER
163	ADL 052514	2	*	ANCHORAGE, MUN (AWWU) ER#05	EAGLE RIVER
164	LAS 003395	2	*	ANCHORAGE, MUN (AWWU) ER#06	EAGLE RIVER
165	LAS 000803	2	*	ANCHORAGE, MUN (AWWU) ER#06	EAGLE RIVER
166	ADL 209828	2	*	ANCHORAGE, MUN (AWWU) ER#07	EAGLE RIVER
167	LAS 001171	2	*	ANCHORAGE, MUN (AWWU) ER#07	EAGLE RIVER
168	LAS 001590	2	*	ANCHORAGE, MUN (AWWU) ER#07	EAGLE RIVER
169	ADL 044197	2	*	ANCHORAGE, MUN (AWWU) ER#08	EAGLE RIVER
170	LAS 003485	2	*	ANCHORAGE, MUN (AWWU) ER#09	EAGLE RIVER
171	LAS 002493	2	*	ANCHORAGE, MUN (AWWU) PT. W. W.W.T.P.	ANCHORAGE
172	ADL 054841	2	*	ANCHORAGE, MUN (AWWU) SHIP CREEK	ANCHORAGE
173	LAS 001051	2	*	ANCHORAGE, MUN (AWWU) SHIP CREEK	ANCHORAGE
174	ADL 044626	2	*	ANCHORAGE, MUN (AWWU) WELL#01	ANCHORAGE
175	ADL 044626	2	*	ANCHORAGE, MUN (AWWU) WELL#02	ANCHORAGE
176	ADL 044626	2	*	ANCHORAGE, MUN (AWWU) WELL#03	ANCHORAGE
177	ADL 044626	2	*	ANCHORAGE, MUN (AWWU) WELL#04	ANCHORAGE
178	ADL 044626	2	*	ANCHORAGE, MUN (AWWU) WELL#05	ANCHORAGE
179	ADL 065787	2	*	ANCHORAGE, MUN (AWWU) WELL#07	ANCHORAGE
180	ADL 044626	2	*	ANCHORAGE, MUN (AWWU) WELL#08	ANCHORAGE
181	ADL 067201	2	*	ANCHORAGE, MUN (AWWU) WELL#09	ANCHORAGE
182	ADL 054850	2	*	ANCHORAGE, MUN (AWWU) WELL#10	ANCHORAGE
183	LAS	2	*	ANCHORAGE, MUN (AWWU) WELL#11	ANCHORAGE
184	ADL 202997	2	*	ANCHORAGE, MUN (AWWU) WELL#12	ANCHORAGE
185	LAS 000246	2	*	ANCHORAGE, MUN (AWWU) WELL#13	ANCHORAGE
186	LAS 000907	2	*	ANCHORAGE, MUN (AWWU) WELL#14	ANCHORAGE
187	ADL 050906	2	*	ANCHORAGE, MUN (AWWU) WELL#20	ANCHORAGE
188	ADL 050910	2	*	ANCHORAGE, MUN (AWWU) WELL#21	ANCHORAGE
189	ADL 050920	2	*	ANCHORAGE, MUN (AWWU) WELL#22	ANCHORAGE
190	ADL 050914	2	*	ANCHORAGE, MUN (AWWU) WELL#23	ANCHORAGE
191	ADL 059925	2	*	ANCHORAGE, MUN (AWWU) WELL#24	ANCHORAGE
192	ADL 062222	2	*	ANCHORAGE, MUN (AWWU) WELL#25	ANCHORAGE
193	ADL 050926	2	*	ANCHORAGE, MUN (AWWU) WELL#26	ANCHORAGE
194	ADL 050909	2	*	ANCHORAGE, MUN (AWWU) WELL#27	ANCHORAGE
195	ADL 063855	2	*	ANCHORAGE, MUN (AWWU) WELL#28	ANCHORAGE
196	ADL 201919	2	*	ANCHORAGE, MUN (AWWU) WELL#28	ANCHORAGE
197	ADL 201920	2	*	ANCHORAGE, MUN (AWWU) WELL#29	ANCHORAGE

APPENDIX B

6

AWUDS PROPOSAL

PRIORITY 2 LIST

OBS	WATER RIGHTS NUMBER	PRIORITY	METERING REQUIRED	NAME OF OWNER	LOCATION
198	ADL 073658	2		ANCHORAGE, MUN (AWWU) WELL#30	ANCHORAGE
199	ADL 203956	2		ANCHORAGE, MUN (AWWU) WELL#31	ANCHORAGE
200	ADL 050923	2		ANCHORAGE, MUN (AWWU) WELL#32	ANCHORAGE
201	ADL 050911	2		ANCHORAGE, MUN (AWWU) WELL#33	ANCHORAGE
202	ADL 045420	2		ANCHORAGE, MUN (AWWU) WELL#34	ANCHORAGE
203	ADL 201555	2		ANCHORAGE, MUN (AWWU) WELL#35	ANCHORAGE
204	ADL 065644	2		ANCHORAGE, MUN (AWWU) WELL#36	ANCHORAGE
205	ADL 050908	2		ANCHORAGE, MUN (AWWU) WELL#37	ANCHORAGE
206	ADL 201921	2	*	ANCHORAGE, MUN (AWWU) WELL#38	ANCHORAGE
207	ADL 202733	2	*	ANCHORAGE, MUN (AWWU) WELL#39	ANCHORAGE
208	ADL 050907	2		ANCHORAGE, MUN (AWWU) WELL#40	ANCHORAGE
209	ADL 050924	2		ANCHORAGE, MUN (AWWU) WELL#41	ANCHORAGE
210	ADL 050927	2		ANCHORAGE, MUN (AWWU) WELL#42	ANCHORAGE
211	ADL 044626	2		ANCHORAGE, MUN (AWWU) WELL#43	ANCHORAGE
212	ADL 045127	2		ANCHORAGE, MUN (AWWU) WELL#44	ANCHORAGE
213	ADL 045127	2		ANCHORAGE, MUN (AWWU) WELL#45	ANCHORAGE
214	ADL 200531	2	*	COLONIAL PARK SUB HOWN	EAGLE RIVER
215	LAS 000219	2	*	DIV ADM CONTR & FAC OFC, DFG HATCHERY	ELMENDORF AFB
216	ADL 053292	2	*	DIV ADM CONTR & FAC OFC, DFG-SHIP CK	ANCHORAGE
217	ADL 101078	2		JUNEAU, C&B - NUGGET CREEK, M.V.W.S.	JUNEAU
218	ADL 053282	2		KENAI, CTY	KENAI
219	ADL 201324	2		PALMER, CTY	PALMER
220	ADL 045762	2	*	RING, DAVID B.	ANCHORAGE
221	ADL 052497	2	*	RIVIERA TERRACE	ANCHORAGE
222	ADL 074700	2		SETTLERS BAY	WASILLA
223	ADL 042906	2	*	TESORO-ALASKAN PETROLEUM CORP	KENAI
224	ADL 042514	2	*	UNION CHEMICALS DIV, UNOCAL CO	KENAI
225	ADL 078077	2	*	UNION OIL COMPANY OF CA.	KENAI
226	ADL 078075	2	*	UNION OIL COMPANY OF CA.	KENAI
227	ADL 044944	2		UNITED STATES DEPT. OF ENERGY-PWRPLNT	EKLUTNA
228	ADL 204276	2		WASILLA, CITY	WASILLA

APPENDIX B

AWJDS PROPOSAL

PRIORITY 3 LIST

DBS	WATER RIGHTS NUMBER	PRIORITY	METERING REQUIRED	NAME OF OWNER	LOCATION
229		3		ALAKANUK, CTY	ALAKANUK
230	ADL 046117	3		B P AK EXP CO INC	KUPARUK RIVER
231		3		CHIGNIK, CTY	CHIGNIK
232	ADL 042525	3		CRAIG, CTY	CRAIG
233	ADL 042345	3		CRAIG, CTY	CRAIG
234	ADL 200736	3		DILLINGHAM, CTY	DILLINGHAM
235	ADL 065760	3		DILLINGHAM, CTY	DILLINGHAM
236	ADL 043054	3		DILLINGHAM, CTY	DILLINGHAM
237	ADL 068113	3		EAGLE, CTY	EAGLE
238	ADL 403885	3		EAGLE, CTY	EAGLE
239	ADL 075895	3		ELIM, CTY	ELIM
240	ADL 061638	3		ELIM, CTY	ELIM
241	ADL 053813	3		FAIRBANKS MUNICIPAL UTL SY, CTY	FAIRBANKS
242	ADL 053816	3		FAIRBANKS MUNICIPAL UTL SY, CTY	FAIRBANKS
243	ADL 053818	3		FAIRBANKS MUNICIPAL UTL SY, CTY	FAIRBANKS
244	LAS 000225	3		FAIRBANKS MUNICIPAL UTL SY, CTY-WWTP	FAIRBANKS
245	LAS 003860	3		FAIRBANKS MUNICIPAL UTL SY, CTY	FAIRBANKS
246		3		FORT YUKON, CTY	FORT YUKON
247	ADL 075908	3		GRAYLING, CTY	GRAYLING
248	ADL 052025	3		HAINES, CTY	HAINES
249	ADL 053566	3		HAINES, CTY	HAINES
250	ADL 053556	3		HAINES, CTY	HAINES
251	ADL 044449	3		HOMER, CTY	HOMER
252	ADL 067133	3		HUSLIA, CTY	HUSLIA
253	ADL 044074	3		HYDABURG, CTY	HYDABURG
254	LAS 001364	3		HYDABURG, CTY	HYDABURG
255	LAS 000198	3		JUNEAU, C&B - COHO PARK	JUNEAU
256	ADL 044439	3		JUNEAU, C&B - GOLD (GOLDEN NUGGET?) CK	JUNEAU
257	ADL 043536	3		JUNEAU, C&B - LAWSON CREEK	JUNEAU/DOUGLAS
258	LAS 001942	3		JUNEAU, C&B - SALMON CREEK POWERHOUSE	JUNEAU
259	ADL 100066	3		JUNEAU, C&B - WELL #3	JUNEAU
260	ADL 048795	3		KETCHIKAN, CTY	KETCHIKAN
261	ADL 048794	3		KETCHIKAN, CTY	KETCHIKAN
262	ADL 042595	3		KING COVE, CTY	KING COVE
263	ADL 072129	3		KIVALINA, CTY	KIVALINA
264	LAS 001257	3		KODIAK, CTY	KODIAK
265	ADL 206409	3		McGRATH, CTY	McGRATH
266	LAS 000969	3		McGRATH, CTY	McGRATH
267	ADL 400616	3		NENANA, CTY	NENANA
268	ADL 044444	3		NOME, CTY	NOME
269	ADL 042993	3		NOME, CTY	NOME
270	ADL 075902	3		NOORVIK, CTY	NOORVIK
271	ADL 403254	3		NORTH POLE, CTY	NORTH POLE
272	ADL 039818	3		OUZINKIE, CTY	OUZINKIE
273	ADL 039832	3		OUZINKIE, CTY	OUZINKIE
274	ADL 068210	3		PETERSBURG, CTY	PETERSBURG
275	ADL 043620	3		PETERSBURG, CTY	PETERSBURG
276		3		QUINHAGAK, CTY.	QUINHAGAK

APPENDIX B

8

AWARDS PROPOSAL

PRIORITY 3 LIST

OBS	WATER RIGHTS NUMBER	PRIORITY	METERING REQUIRED	NAME OF OWNER	LOCATION
277	ADL 076070	3		SAINTE MICHAEL, CTY	SAINTE MICHAEL
278	ADL 067083	3		SAND POINT, CTY	SAND POINT
279	ADL 201803	3		SAND POINT, CTY	SAND POINT
280	ADL 076058	3		SCAMMON BAY, CTY	SCAMMON BAY
281	ADL 046364	3		SCAMMON BAY, CTY	SCAMMON BAY
282	ADL 040037	3		SELDOVIA, CTY	SELDOVIA
283	ADL 039936	3		SEWARD, CTY	SEWARD
284	ADL 075901	3		SHISHMAREF, CTY	SHISHMAREF
285	ADL 101685	3		SITKA, C&B	SITKA
286	ADL 101686	3		SITKA, C&B	SITKA
287	ADL 043985	3		SKAGWAY, CTY	SKAGWAY
288	ADL 043988	3		SKAGWAY, CTY	SKAGWAY
289	ADL 043987	3		SKAGWAY, CTY	SKAGWAY
290	ADL 043986	3		SKAGWAY, CTY	SKAGWAY
291	ADL 075979	3		STANDARD ALASKA PRODUCTION CO	KUPARIK RIVER
292	ADL 052342	3		SOLDOTNA, CTY	SOLDOTNA
293	ADL 040315	3		SOLDOTNA, CTY	SOLDOTNA
294	ADL 206983	3		SOLDOTNA, CTY	SOLDOTNA
295	ADL 075777	3		UNALASKA, CTY	UNALASKA
296	ADL 066640	3		UNALASKA, CTY	UNALASKA
297	ADL 053868	3		UNALASKA, CTY	UNALASKA
298	LAS 002396	3		UNALASKA, CTY	UNALASKA
299	LAS 002395	3		UNALASKA, CTY	UNALASKA
300	ADL 046360	3		VALDEZ, CTY	VALDEZ
301		3		WALES, CTY	WALES
302	ADL 043811	3		WRANGELL, CITY	WRANGELL
303	ADL 043340	3		YAKUTAT, CITY	YAKUTAT

APPENDIX B

AWUDS PROPOSAL

PRIORITY 4 LIST

OBS	WATER RIGHTS NUMBER	PRIORITY	METERING REQUIRED	NAME OF OWNER	LOCATION
304	ADL 042553	4		AKHIQ, CTY	AKHIQ
305	ADL 212285	4		AKUTAN, CTY	AKUTAN
306	ADL 046050	4		ALASKA PACKERS ASSOC., INC.	CLARKS POINT
307	ADL 046266	4		ALASKA PACKERS ASSOC., INC.	KVICHAK
308	ADL 050982	4		ALASKA PACKERS ASSOC., INC.	SOUTH NAKNEK
309	ADL 046265	4		ALASKA PACKERS ASSOC., INC.	SOUTH NAKNEK
310	ADL 046267	4		ALASKA PACKERS ASSOC., INC.	SOUTH NAKNEK
311	ADL 046268	4		ALASKA PACKERS ASSOC., INC.	UGASHIK
312	ADL 039793	4		ALASKA PACKERS ASSOC., INC.-TROUT CK.	LARSEN BAY
313	ADL 061533	4	*	ALYESKA UTILITIES INC.	GIRWOOD
314	ADL 075903	4		AMBLER, CTY	AMBLER
315		4		ANGOON, CTY	ANGOON
316		4		ATMAUTLUAK, CTY	ATMAUTLUAK
317	LAS 007813	4		BETHEL UTILS. CO.	BETHEL
318	ADL 075861	4		BUCKLAND, CTY	BUCKLAND
319	ADL 049159	4		BUMBLE BEE SEAFOODS	SOUTH NAKNEK
320	ADL 075891	4		CHEFORNAK, CTY	CHEFORNAK
321	ADL 075892	4		CHEVAK, CTY	CHEVAK
322	ADL 046114	4		CHUCACH ALASKA FISHERIES, INC.	ORCA
323		4		COLD BAY, CTY	COLD BAY
324	ADL 047240	4		CORDOVA, CTY	CORDOVA
325	ADL 047222	4		CORDOVA, CTY	CORDOVA
326	ADL 212648	4		CORDOVA, CTY	CORDOVA
327	ADL 075906	4		DEERING, CTY	DEERING
328		4		EEK, CTY	EEK
329		4		EMMONAK, CTY	EMMONAK
330	ADL 075858	4		FORTUNA LEDGE, CTY	FORTUNA LEDGE
331	ADL 067135	4		GALENA, CTY	GALENA
332	ADL 067136	4		GALENA, CTY	GALENA
333	ADL 075905	4		GAMBELL, CTY	GAMBELL
334	LAS 003530	4		GOLOVIN, CTY	GOLOVIN
335		4		GOODNEWS BAY, CTY	GOODNEWS BAY
336		4		HOLY CROSS, CTY	HOLY CROSS
337		4		HUGHES, CTY	HUGHES
338	ADL 043611	4		KAKE, CTY	KAKE
339		4		KASAAN, CTY	KASAAN
340		4		KIANA, CTY	KIANA
341	ADL 039797	4	*	KODIAK, CTY	KODIAK
342	ADL 042925	4	*	KODIAK, CTY	KODIAK
343	ADL 401827	4		KOTZEBUE, CTY	KOTZEBUE
344		4		KOYUK, CTY	KOYUK
345	ADL 046330	4		KOYUKUK, CTY	KOYUKUK
346	ADL 046042	4		KWETHLUK, CTY	KWETHLUK
347	ADL 039825	4		LARSEN BAY, CTY	LARSEN BAY
348		4		LOWER KALSKAG, CTY	LOWER KALSKAG
349		4		MANOKOTAK, CTY	MANOKOTAK
350	ADL 075907	4		MEKORYUK, CTY	MEKORYUK
351		4		METLAKATLA, IND	METLAKATLA

AWIDS PROPOSAL

PRIORITY 4 LIST

OBS	WATER RIGHTS NUMBER	PRIORITY	METERING REQUIRED	NAME OF OWNER	LOCATION
352	ADL 075853	4		MOUNTAIN VILLAGE, CTY	MTN. VILLAGE
353	ADL 075896	4		NAPAKIAK, CTY	NAPAKIAK
354	ADL 046276	4	*	NELBRO PACKING CO.	NAKNEK
355	ADL 080619	4	*	NELBRO PACKING CO.	NAKNEK
356	ADL 058864	4		NEW STUYAHOK, CTY	NEW STUYAHOK
357		4		NONDALTON, CTY	NONDALTON
358		4		NUNAPITCHUK, CTY	NUNPITCHUK
359	ADL 039830	4		OLD HARBOR, CTY	OLD HARBOR
360	ADL 076069	4		OLD HARBOR, CTY	OLD HARBOR
361	ADL 200178	4		OLD HARBOR, CTY	OLD HARBOR
362	ADL 042984	4		PETERSBURG PROCESSORS	PETERSBURG
363	ADL 039835	4	*	PORT LIONS, CTY	PORT LIONS
364	ADL 201584	4	*	QUEEN FISHERIES, INC.	NUSHAGAK BAY
365		4		RUSSIAN MISSION, CTY	RUSSIAN MISS.
366		4		SAINT GEORGE, CTY	SAINT GEORGE
367	ADL 075852	4		SAINT MARY'S, CTY	SAINT MARY'S
368	ADL 075904	4		SAVGONGA, CTY	SAVOONGA
369	ADL 201266	4		SEA-NIK FOODS	NINILCHIK
370	LAS 003042	4		SEA-NIK FOODS	NINILCHIK
371	ADL 075856	4		SHAGELUK, CTY	SHAGALUK
372		4		SHATDOLIK, CTY	SHATDOLIK
373		4		SHELDON POINT, CTY	SHELDON POINT
374		4		SHUNGNAK, CTY	SHUNGNAK
375	ADL 076059	4		STEBBINS, CTY	STEBBINS
376		4		TANANA, CTY	TANANA
377		4		TATITLEK, VIL	TATITLEK
378		4		TELLER, CTY	TELLER
379	ADL 075735	4		TOGIAK, CTY	TOGIAK
380	ADL 076063	4		TOKSOOK BAY, CTY	TOKSOOK BAY
381	ADL 201601	4	*	TRUJILLO, EDDIE C.	KASILOF
382	ADL 075898	4		TULUKSAK, CTY	TULUKSAK
383	LAS 002600	4		TUNUNAK, CTY	TUNUNAK