

**Public-data File 91-22f**

**NATIONAL URANIUM RESOURCE EVALUATION GEOCHEMICAL  
DATA FOR STREAM- AND LAKE-SEDIMENT SAMPLES IN THE  
BETTLES QUADRANGLE, ALASKA**

by

**M.A. Wiltse**

Alaska Division of  
Geological & Geophysical Surveys

December 1990

**THIS REPORT HAS NOT BEEN REVIEWED FOR  
TECHNICAL CONTENT (EXCEPT AS NOTED IN  
TEXT) OR FOR CONFORMITY TO THE  
EDITORIAL STANDARDS OF DGGS.**

794 University Avenue, Suite 200  
Fairbanks, Alaska 99709-3645

**NATIONAL URANIUM RESOURCE EVALUATION GEOCHEMICAL DATA  
FOR STREAM- AND LAKE-SEDIMENT SAMPLES IN THE  
BETTLES QUADRANGLE, ALASKA**

by  
M.A. Wiltse

**INTRODUCTION**

**Purpose:**

In December of 1990 the Alaska Division of Geological and Geophysical Surveys (ADGGS) began a mineral resource evaluation of those lands still available for state selection under the Alaska Statehood Act. As part of that process ADGGS is reviewing the stream- and lake-sediment geochemical data generated during the U.S. Department of Energy, National Uranium Resource Evaluation (NURE) program.

This Public-data File has been released so that a summary of that data is available to interested persons. This publication has not been formally reviewed for technical accuracy or for conformity to the editorial standards of ADGGS.

**Scope of data:**

ADGGS has reviewed NURE geochemical data for the following 1:250,000 quadrangles:

Anchorage	ANC
Baird Mountains	XBM
Beaver	BVR
Bendeleben	BEN
Bering Glacier	XBG
Bettles	BET
Big Delta	XBD
Black River	BLR
Candle	CAN
Chandalar	CHN
Charley River	CHR
Circle	CIR
Eagle	EAG
Gulkana	GUL
Healy	HEA
Hughes	HUG
Iditarod	IDT
Kateel River	KAT
Lime Hills	LIM
Livengood	LIV
Medfra	MED
Melozitna	MLZ
Misheguk Mountain	MIS
Mount Hayes	XMH
Nabesna	NAB

Nome	NOM
Norton Bay	NOB
Nulato	NUT
Phillip Smith Mountains	PSM
Point Hope	XPH
Point Lay	XPL
Ruby	RUB
Selawik	SLK
Shungnak	SHU
Sleetmute	SLT
Solomon	SOL
Talkeetna Mountains	TLM
Tanacross	TNX
Tanana	TAN
Teller	TEL
Umiat	UMI
Unalakleet	UKT
Utukok River	XUR
Valdez	VAL
Wiseman	WIS

#### Limitations of data:

Our review has been limited to the following elements: Ag, As, Au, Ba, Be, Bi, Cd, Co, Cr, Cu, Fe, La, Mn, Mo, Ni, Pb, Sb, Sn, Ti, U, U/Th, V, W, Zn

The Nure data set also contains analyses for: Al, Ca, Ce, Cl, Cs, Dy, Eu, Hf, K, Li, Lu, Mg, Na, Nb, Rb, Sc, Sm, Sr, Ta, Tb, Th, Yb, Zr. These data have not been analyzed in the present study.

Because of the procedures used in generating the initial chemical analyses, the NURE geochemical data set has severe limitations. Many elements were determined at only a few sample sites resulting in many samples having incomplete data coverage. The detection limit for many elements is high, making those data of limited effectiveness in delineating mineral resources. Regardless of these and other shortcomings, however, the NURE data do provide information concerning mineralization in many poorly accessible parts of Alaska.

#### Contents:

This Public-data File (PDF), and the PDF's for the above listed quadrangles, contain a columnar ASCII file on a 5 1/4" high density floppy disk that includes: sample number, replicate code, sample type code, latitude, longitude, and the complete set of elemental analyses available for each sample in the quadrangle. These data are consistently ordered in the file as shown below:

Sample number, Replicate code, Latitude, Longitude, Sample-type code, U Ag Bi Cd Cu Nb Ni  
Pb Sn W As Zr Mo Be Li Al Au Ba Ca Ce Cl Co Cr Cs Dy Eu Fe Hf K La Lu Mn Mg Na Rb Sb Sc  
Sm Sr Ta Tb Th Ti V Yb Zn U/Th

All values are entered as parts per million. The data file bears a three letter identification and the extension "ASC" (eg. EAG.ASC for the Eagle Quadrangle data file).

A sample replicate code of "0" indicates that the sample is the initial sample taken at a site and is the code found for most samples. Subsequent samples collected from the same site have successively

higher integer designations. Sample type codes range from "01" to "99". The definition of these codes is found in Appendix A "Key to Sample Types".

Within the elemental analysis fields of a sample, values of -999 indicate that no analyses was attempted for that element. Other negative numbers (eg. -5) in an elemental analysis field of a record indicate that the element was not detected at a level equal to the absolute value of the negative number tabulated.

## TREATMENT OF DATA

### Elements:

Although all the elemental NURE data available for a quadrangle is included in the digital ASCII file supplied with this PDF, only a 24 element subset of data was analyzed for this PDF: Ag, As, Au, Ba, Be, Bi, Cd, Co, Cr, Cu, Fe, La, Mn, Mo, Ni, Pb, Sb, Sn, Ti, U, U/Th, V, W, Zn.

### Grouping of data:

The majority of the Alaska Nure geochemical data is derived from stream sediment or lake sediment samples. Many data sets, however, have a few samples that are subtypes of these two fundamental sample groups. For the purpose of the data review released in this PDF, all subtype samples have been recoded to either the stream sediment type or the lake sediment type, whichever type they most closely resembled. We estimate that less than 1 percent of the samples encountered in this review were recoded.

Following sample-type recoding, brief summary statistics were calculated separately for the stream sediment samples (type=12) and for the lake sediment samples (type=13). These statistics provide a quick reference to the number of samples that have analytical values exceeding the detection limit and provide an indication of the geochemical dispersion of the elements for each sample type.

Single-element Pseudomaps of the data have been made that show the location of all samples having analytical values greater than the mean. This was accomplished by separately standardizing the data for each sample type, recoding all standard scores that were less-than-or-equal-to-zero to zero and then plotting a symbol at each sample site, the size of which is proportional to the elemental standardized value (Z-score) at that sample site. Because Z-scores are measures of standard deviation, this procedure results in a pseudomap with varying symbol size that directly reflects how far a sample's element content is above the mean. The larger symbols correspond to element values that are farthest above the mean value for the element in question. A Symbol-size key is provided in figure 1 which indicates the symbol size for element abundances from 1 to 6 standard deviations above the mean.

Bettles

THE FOLLOWING RESULTS ARE FOR:  
 TYPE = 12.000

TOTAL OBSERVATIONS: 298

	U	AG	BI	CD	CU
N OF CASES	298	1	105	3	258
MINIMUM	0.200	6.000	5.000	5.000	10.000
MAXIMUM	301.600	6.000	23.000	6.000	188.000
MEAN	9.505	6.000	8.495	5.333	28.938
STANDARD DEV	20.507	.	3.949	0.577	18.813

	NI	PB	SN	W	AS
N OF CASES	238	230	16	49	247
MINIMUM	15.000	5.000	10.000	15.000	5.000
MAXIMUM	1829.000	61.000	50.000	67.000	93.000
MEAN	44.244	13.874	25.813	23.837	17.798
STANDARD DEV	120.184	8.558	13.625	9.873	14.453

	MO	BE	AU	BA	CO
N OF CASES	0	0	2	282	295
MINIMUM	.	.	0.110	251.000	5.700
MAXIMUM	.	.	0.430	1560.000	185.800
MEAN	.	.	0.270	762.319	19.963
STANDARD DEV	.	.	0.226	199.312	14.088

	CR	FE	MN	SB	TI
N OF CASES	296	298	297	1	288
MINIMUM	27.000	11350.000	156.000	15.000	1857.000
MAXIMUM	3368.000	122000.000	7049.000	15.000	14390.000
MEAN	121.591	41757.550	888.576	15.000	5061.510
STANDARD DEV	208.244	14633.508	787.952	.	1450.901

	V	ZN	UTH	LA
N OF CASES	296	139	296	285
MINIMUM	23.000	53.000	0.014	20.000
MAXIMUM	263.000	279.000	8.593	253.000
MEAN	130.946	136.806	0.400	56.330
STANDARD DEV	41.335	49.656	0.512	35.962

THE FOLLOWING RESULTS ARE FOR:  
 TYPE = 13.000

TOTAL OBSERVATIONS: 600

	U	AG	BI	CD	CU
N OF CASES	600	1	131	2	585
MINIMUM	0.220	5.000	5.000	5.000	10.000
MAXIMUM	42.370	5.000	12.000	11.000	136.000
MEAN	3.515	5.000	6.160	8.000	39.362
STANDARD DEV	3.436	.	1.568	4.243	14.703

	NI	PB	SN	W	AS
N OF CASES	535	441	3	22	529
MINIMUM	15.000	5.000	14.000	15.000	5.000
MAXIMUM	188.000	29.000	18.000	129.000	512.000
MEAN	36.533	9.687	16.667	25.455	14.662
STANDARD DEV	16.902	3.775	2.309	23.500	24.371

	MO	BE	AU	BA	CO
N OF CASES	0	0	0	545	555
MINIMUM	.	.	.	171.000	3.700
MAXIMUM	.	.	.	1878.000	62.200
MEAN	.	.	.	830.213	17.455
STANDARD DEV	.	.	.	212.002	6.439

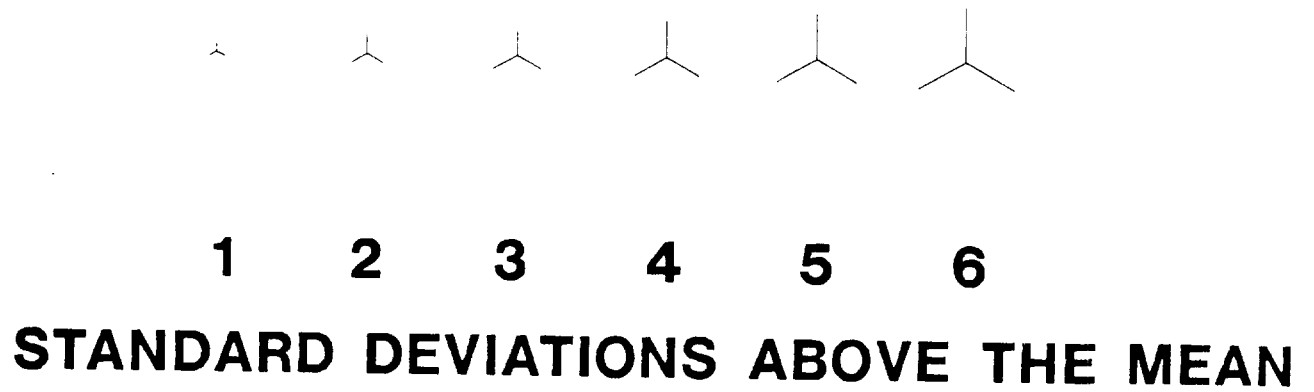
	CR	FE	MN	SB	TI
N OF CASES	552	579	600	1	543
MINIMUM	24.000	3155.000	38.000	4.000	797.000
MAXIMUM	640.000	179600.000	2580.000	4.000	7732.000
MEAN	96.982	35232.511	444.517	4.000	4437.460
STANDARD DEV	38.210	16087.989	249.579	.	1122.538

	V	ZN	UTH	LA
N OF CASES	581	199	558	456
MINIMUM	19.000	56.000	0.171	14.000
MAXIMUM	260.000	483.000	3.686	187.000
MEAN	128.719	146.015	0.341	36.739
STANDARD DEV	41.919	60.169	0.176	13.296

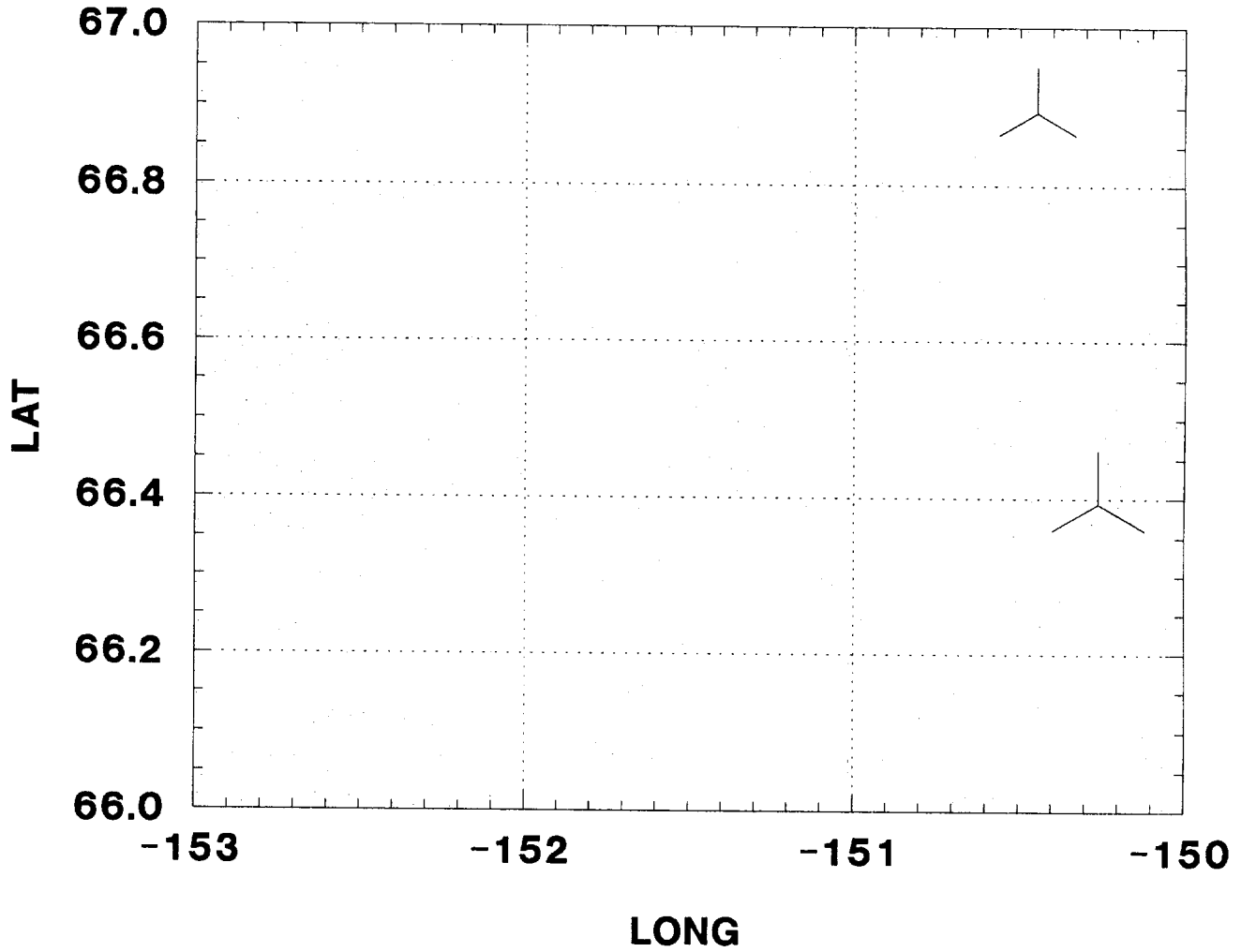
THESE RESULTS ARE FOR BETL NURE DATA

TOTAL OBSERVATIONS: 898

Figure 1. Symbol-size key for single element pseudomaps indicating the size of plotted symbols for values that are from 1 to 6 standard deviations above the mean.

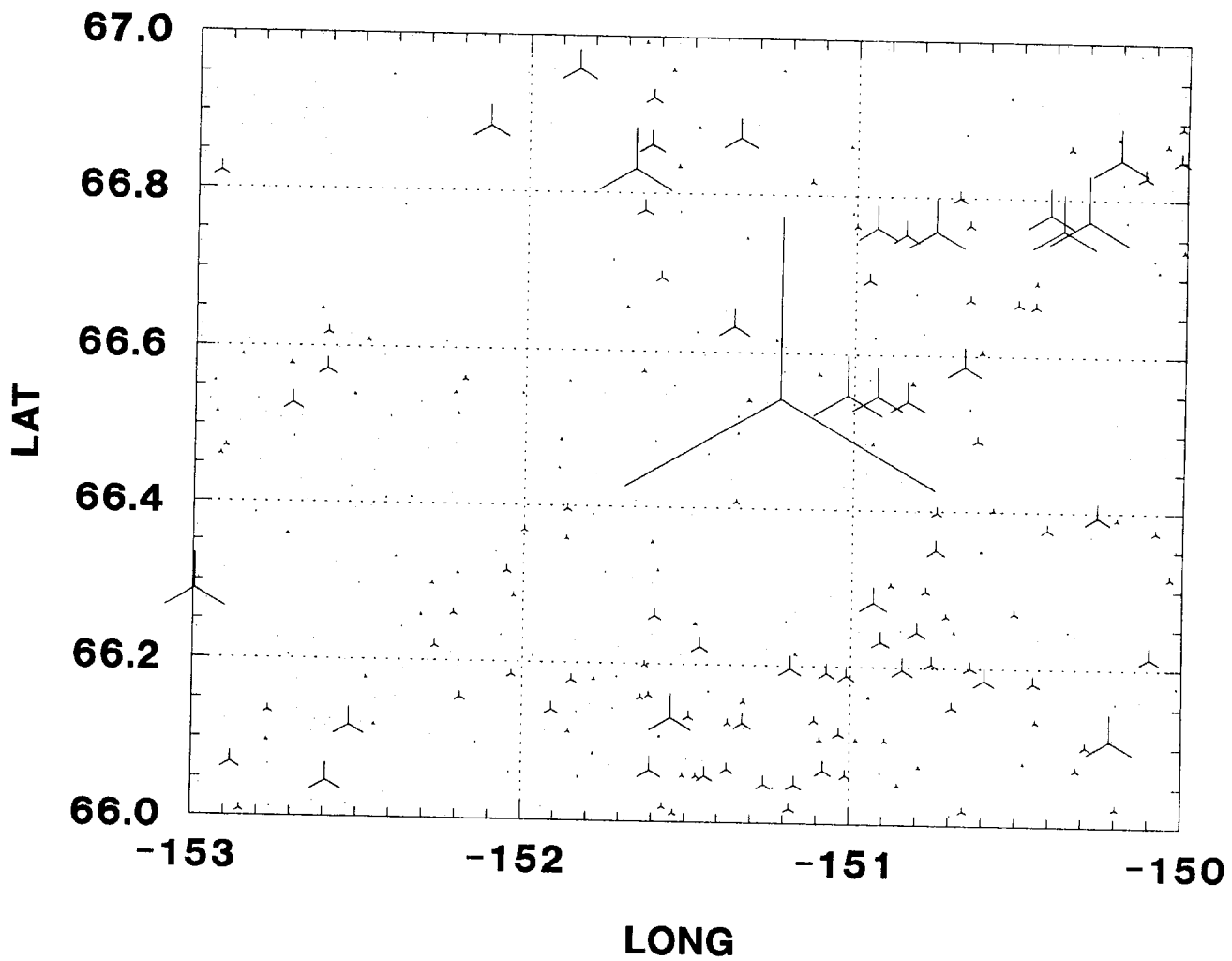


# BETZMAP NURE DATA FOR AG

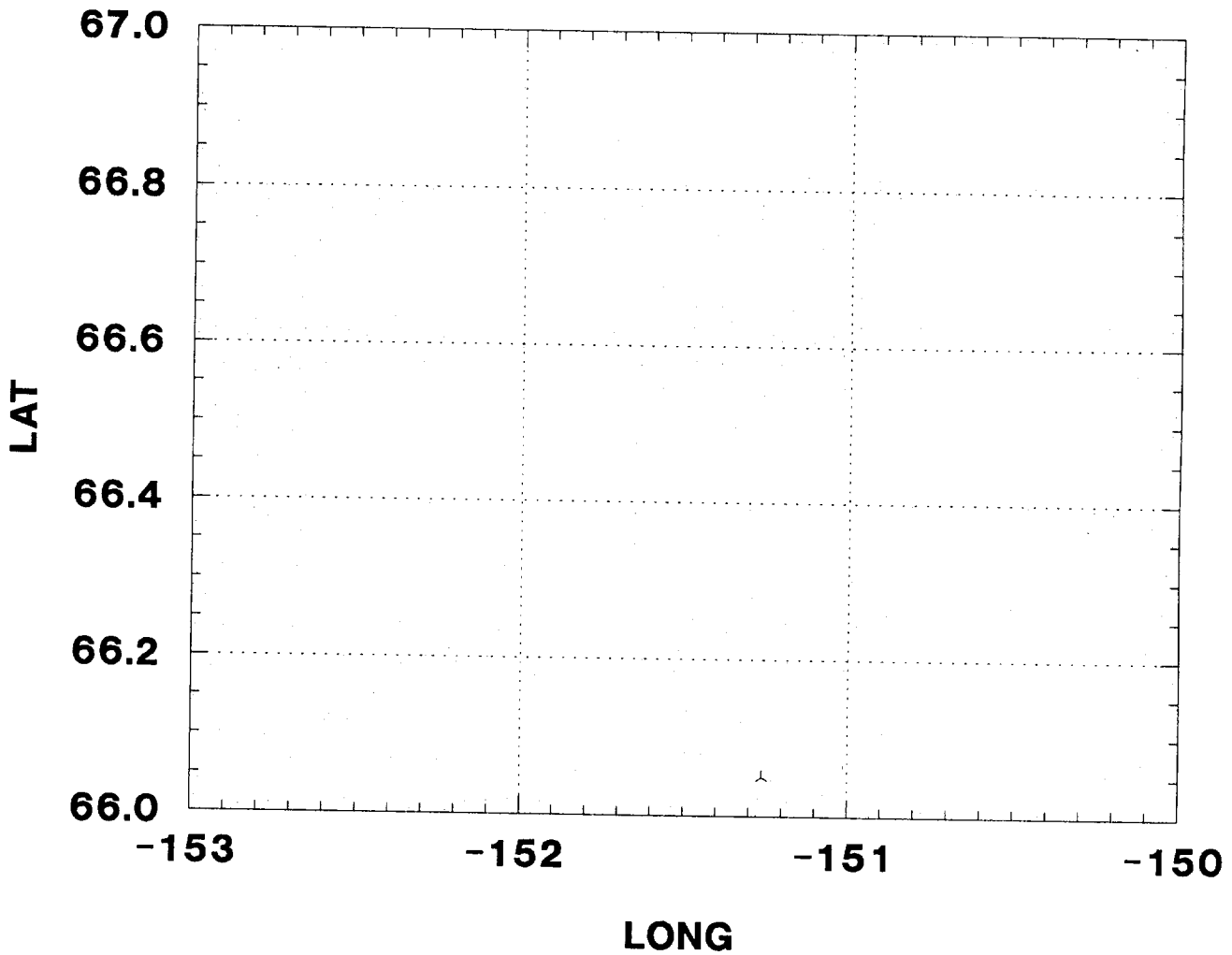




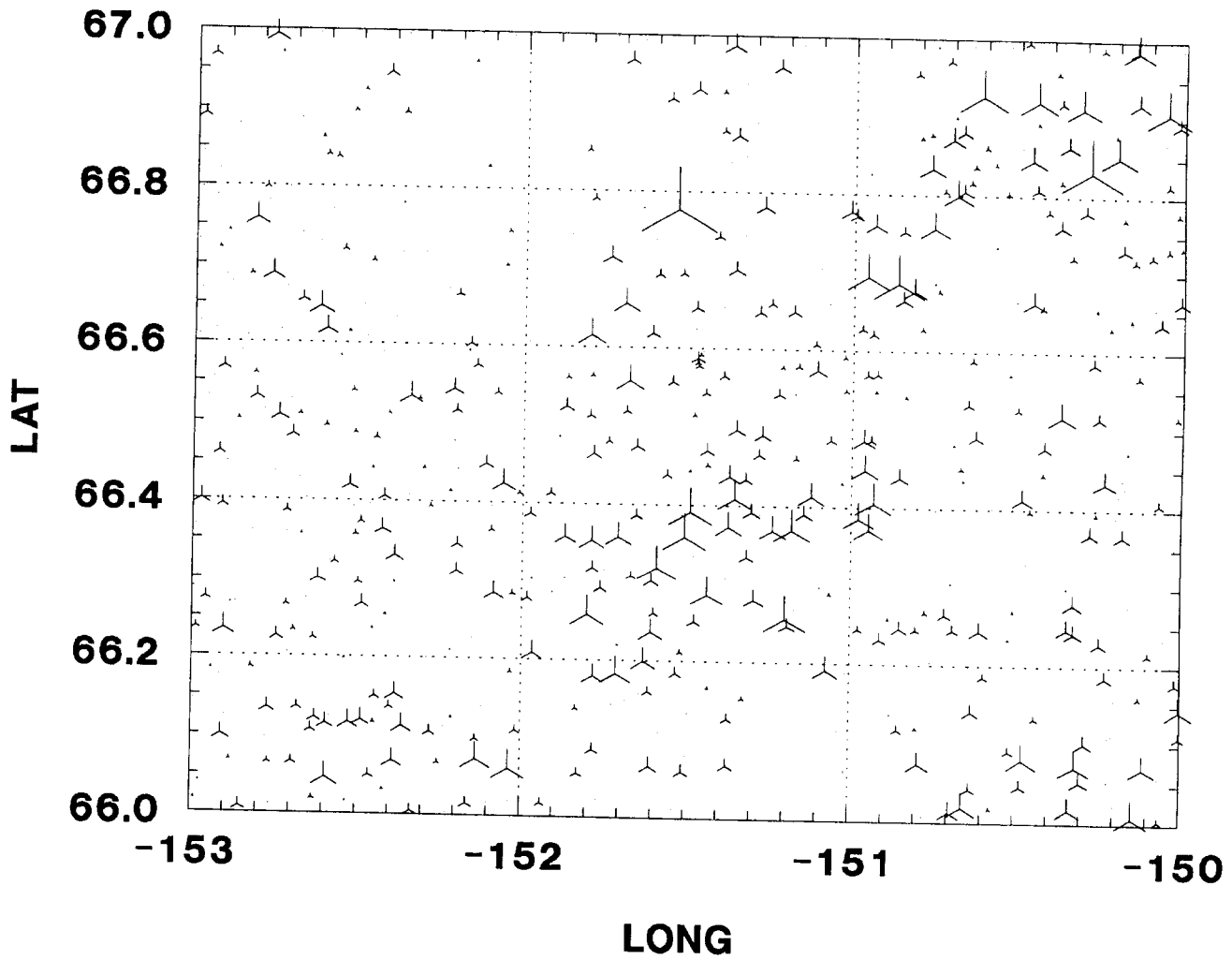
# BETZMAP NURE DATA FOR AS



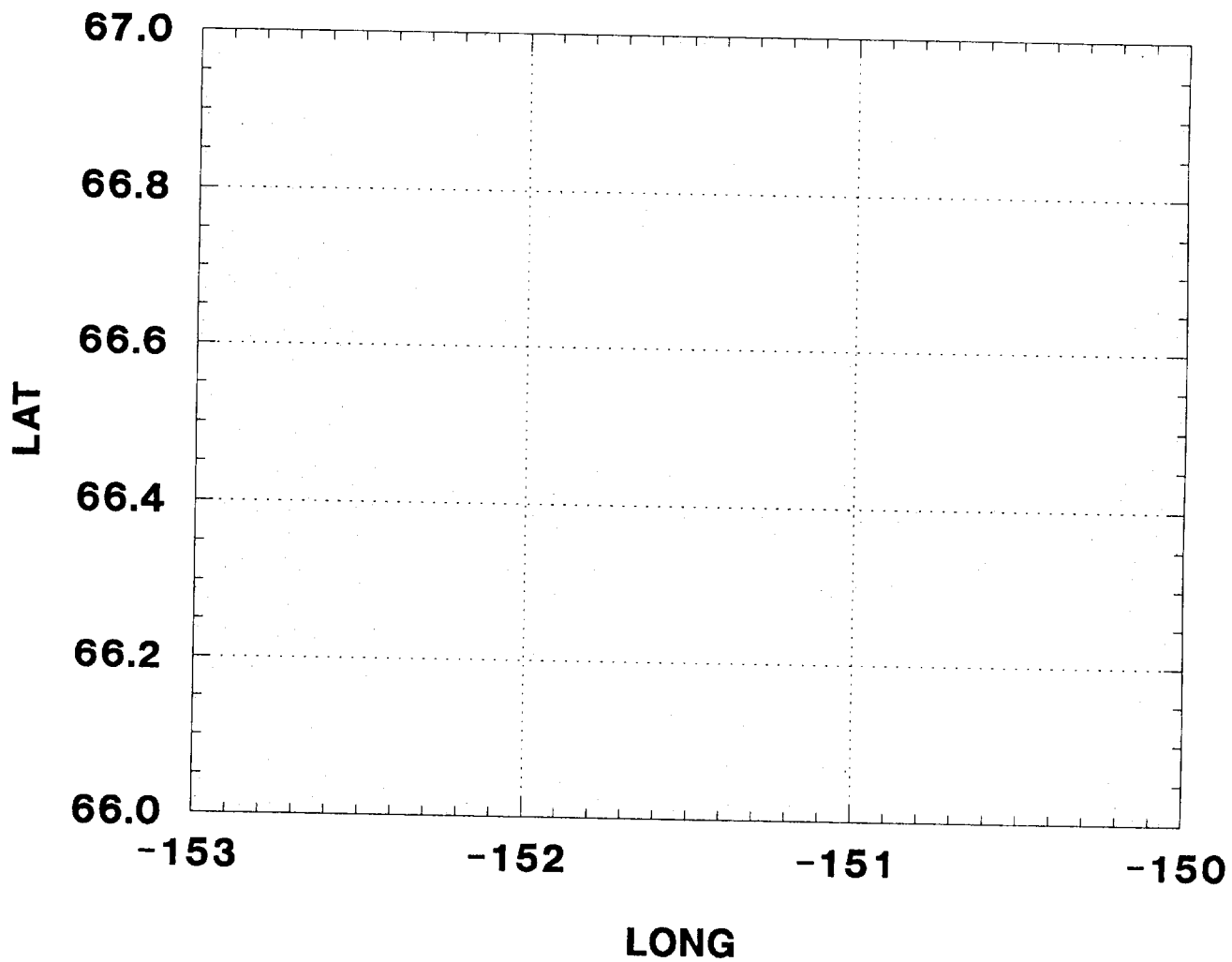
# BETZMAP NURE DATA FOR AU



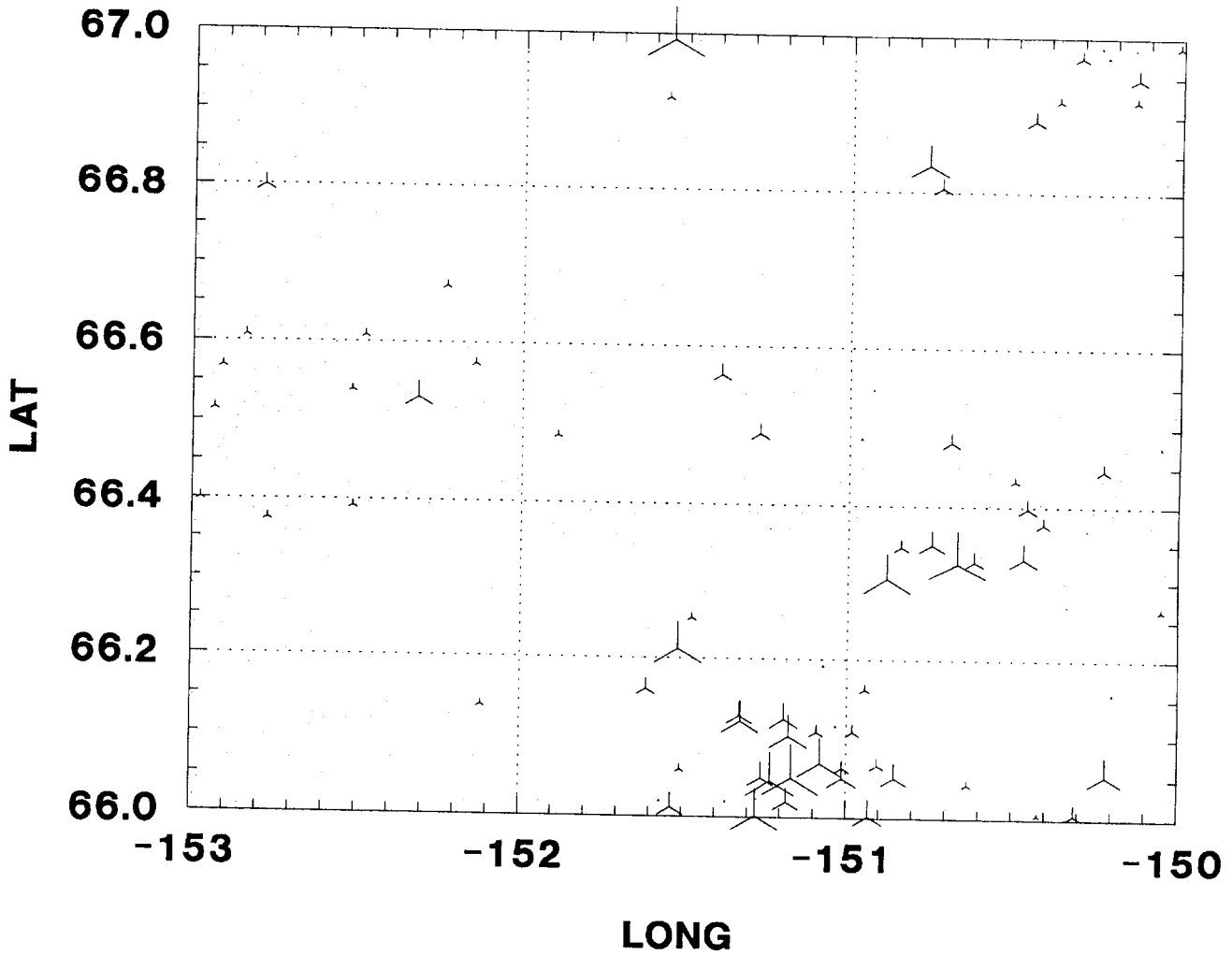
# BETZMAP NURE DATA FOR BA



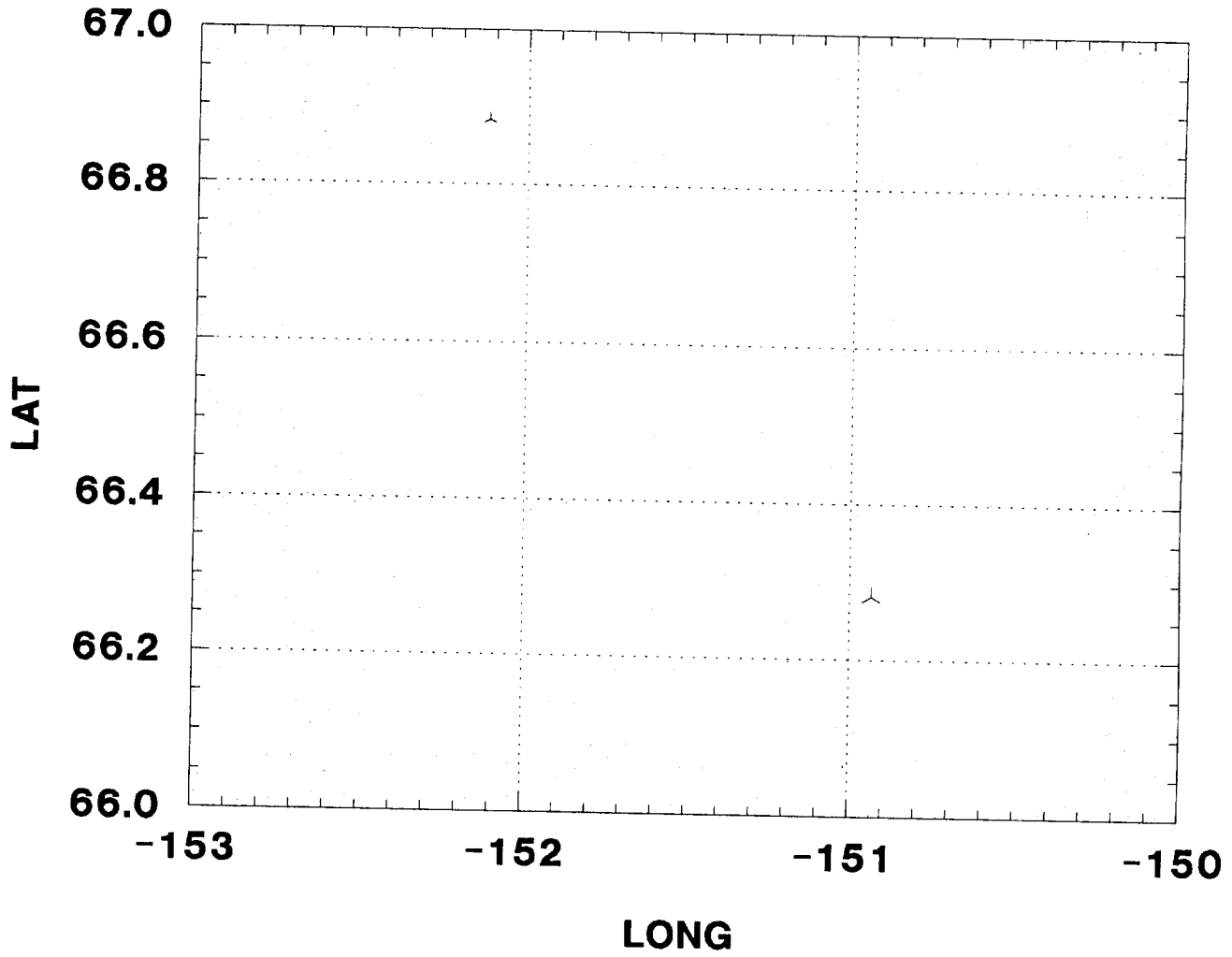
# BETZMAP NURE DATA FOR BE



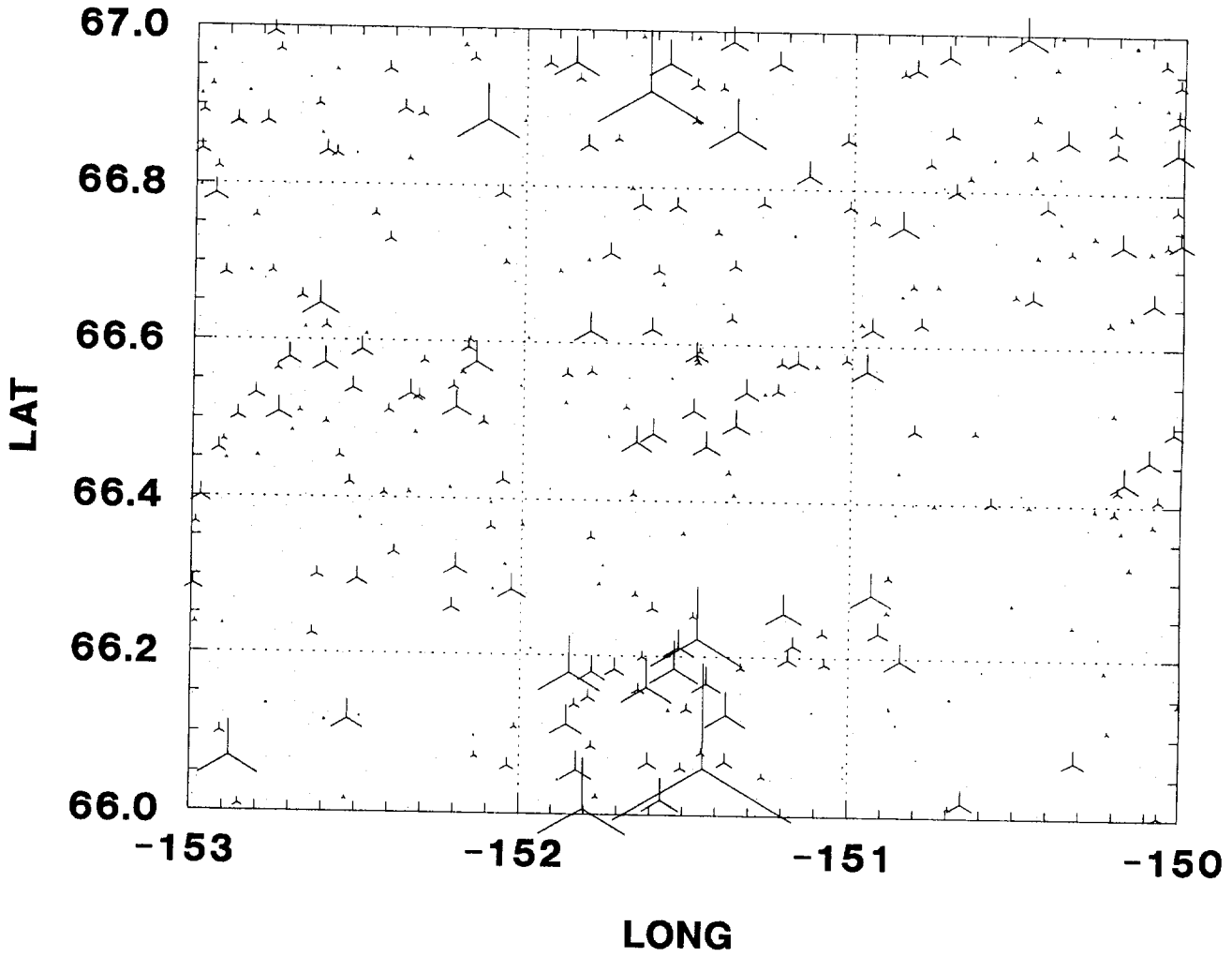
# BETZMAP NURE DATA FOR BI



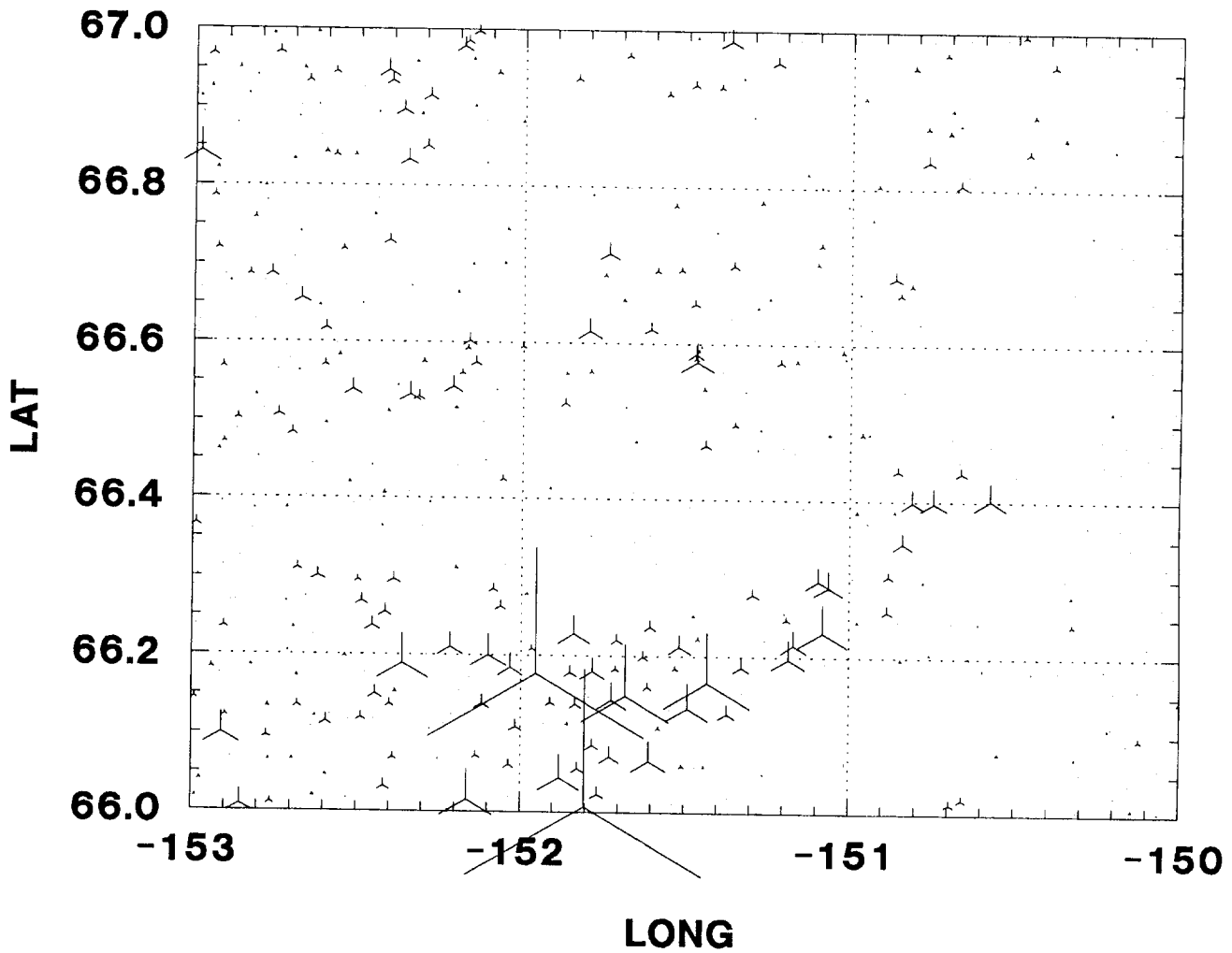
# BETZMAP NURE DATA FOR CD



# BETZMAP NURE DATA FOR CO

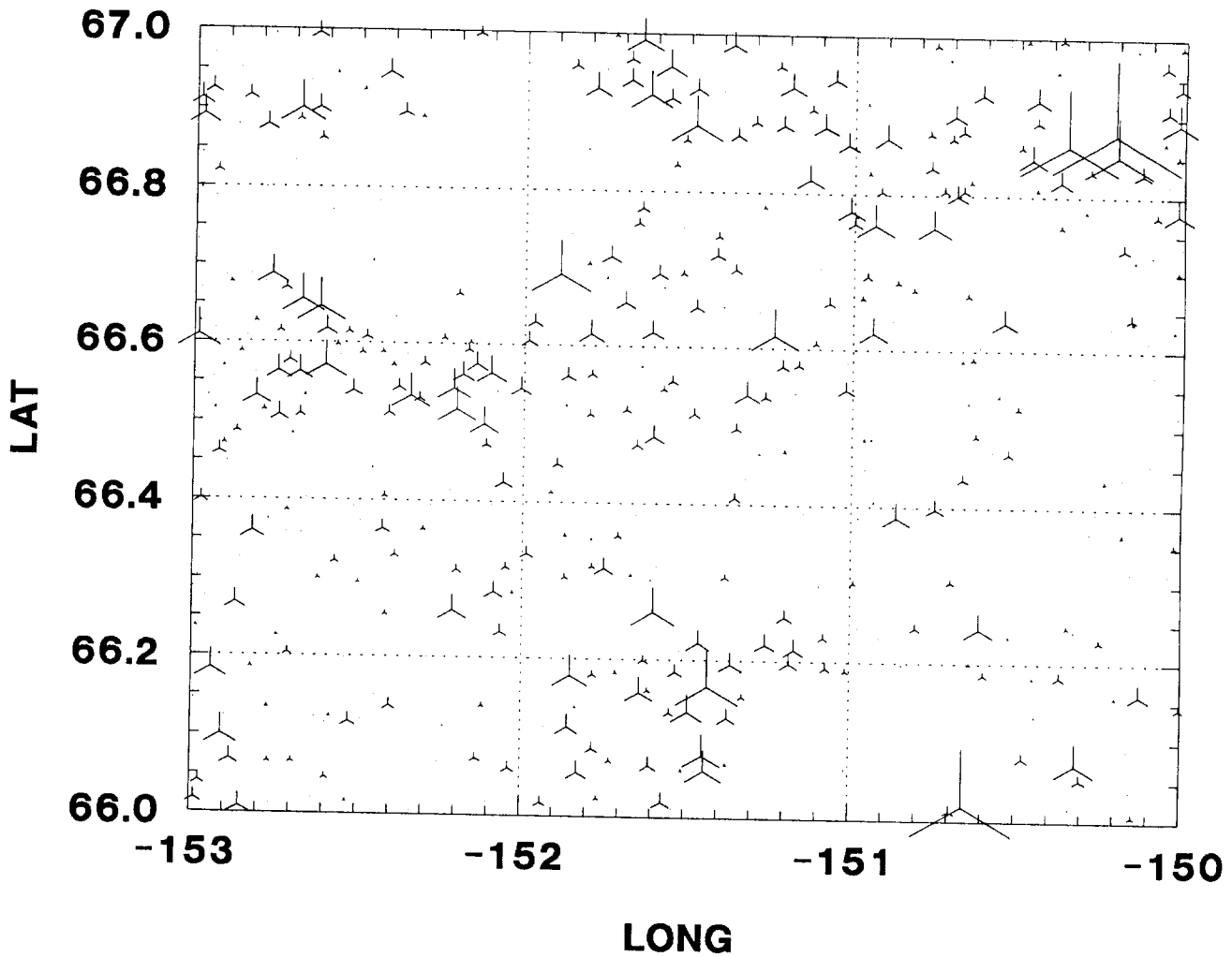


# BETZMAP NURE DATA FOR CR

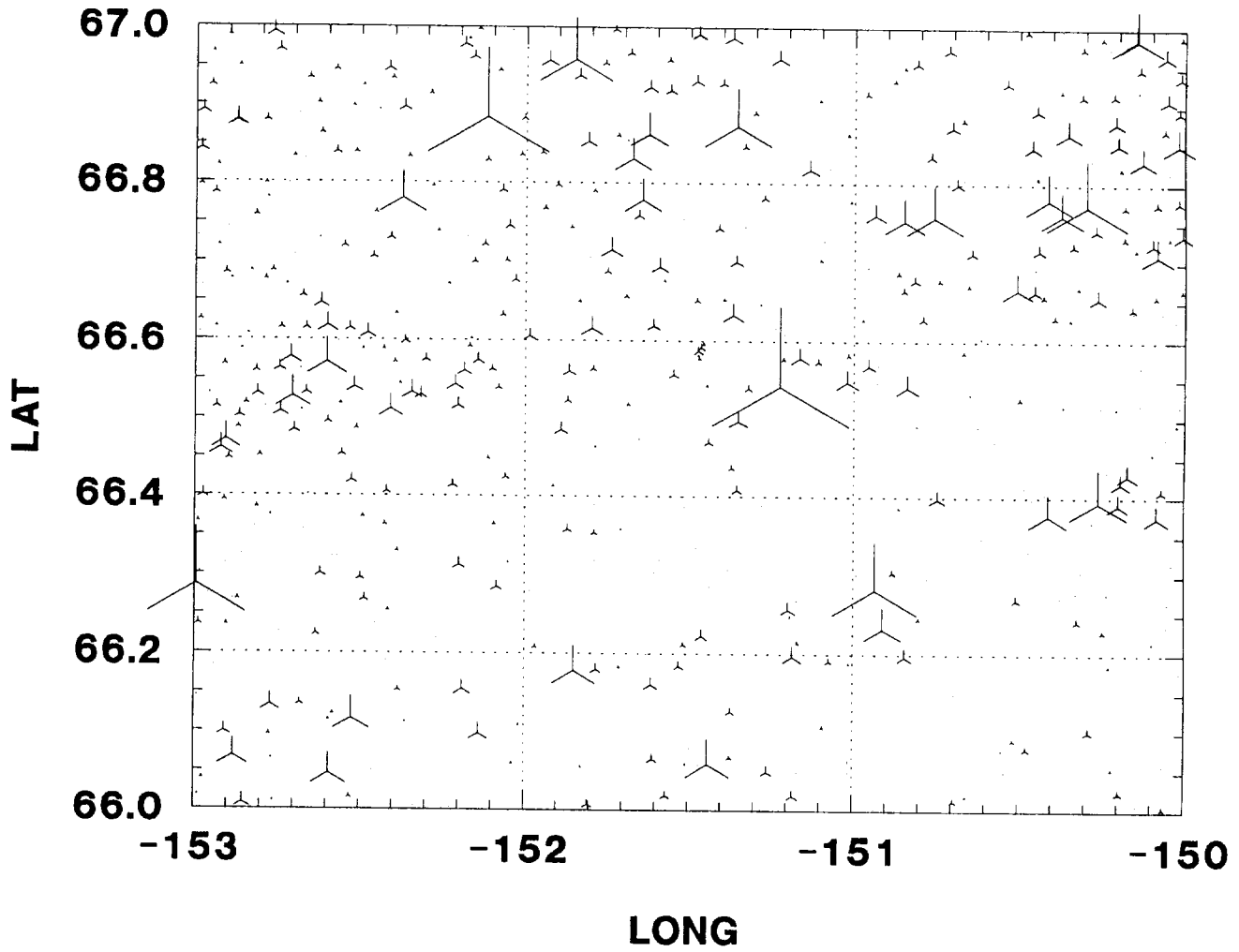




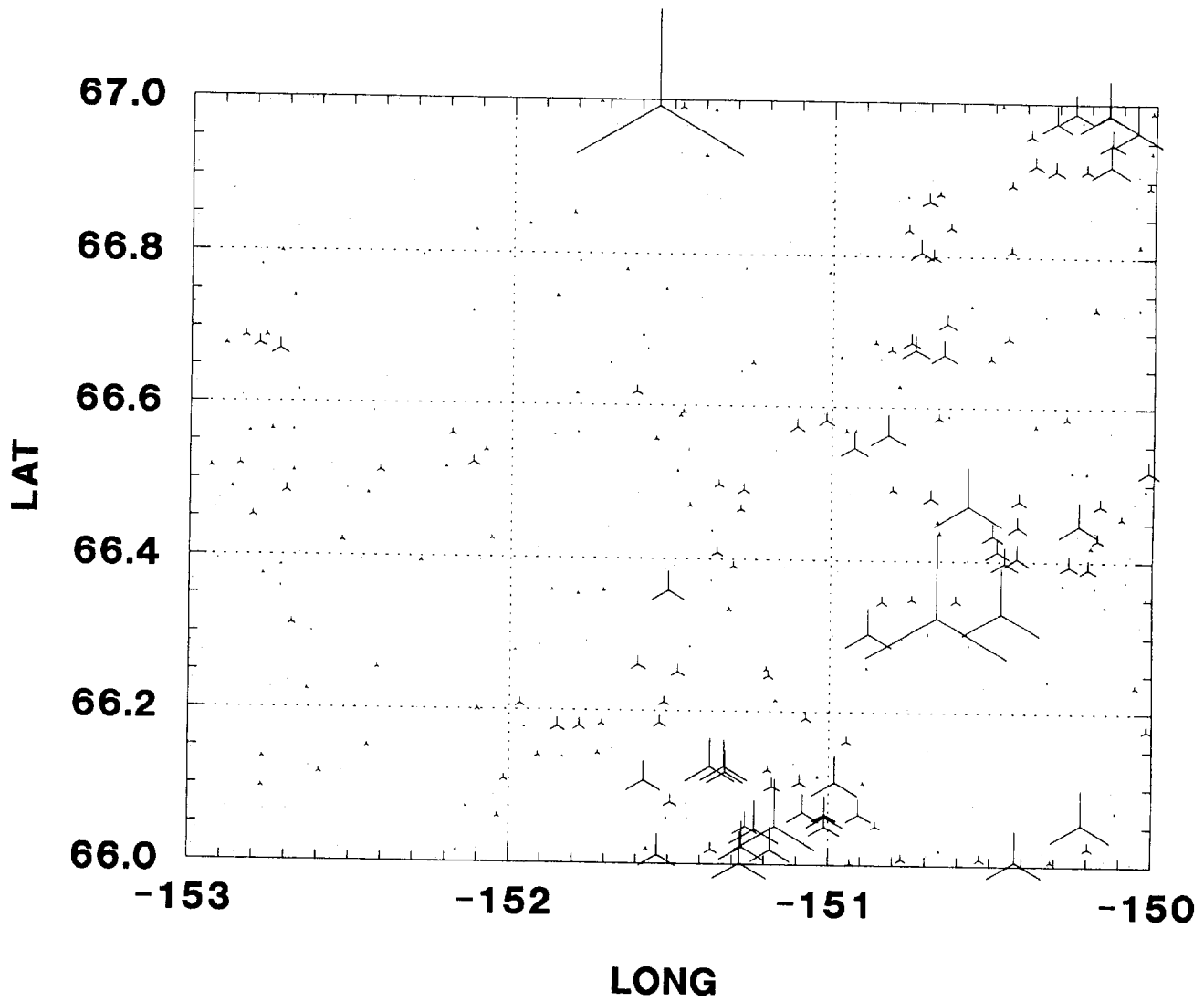
# BETZMAP NURE DATA FOR CU



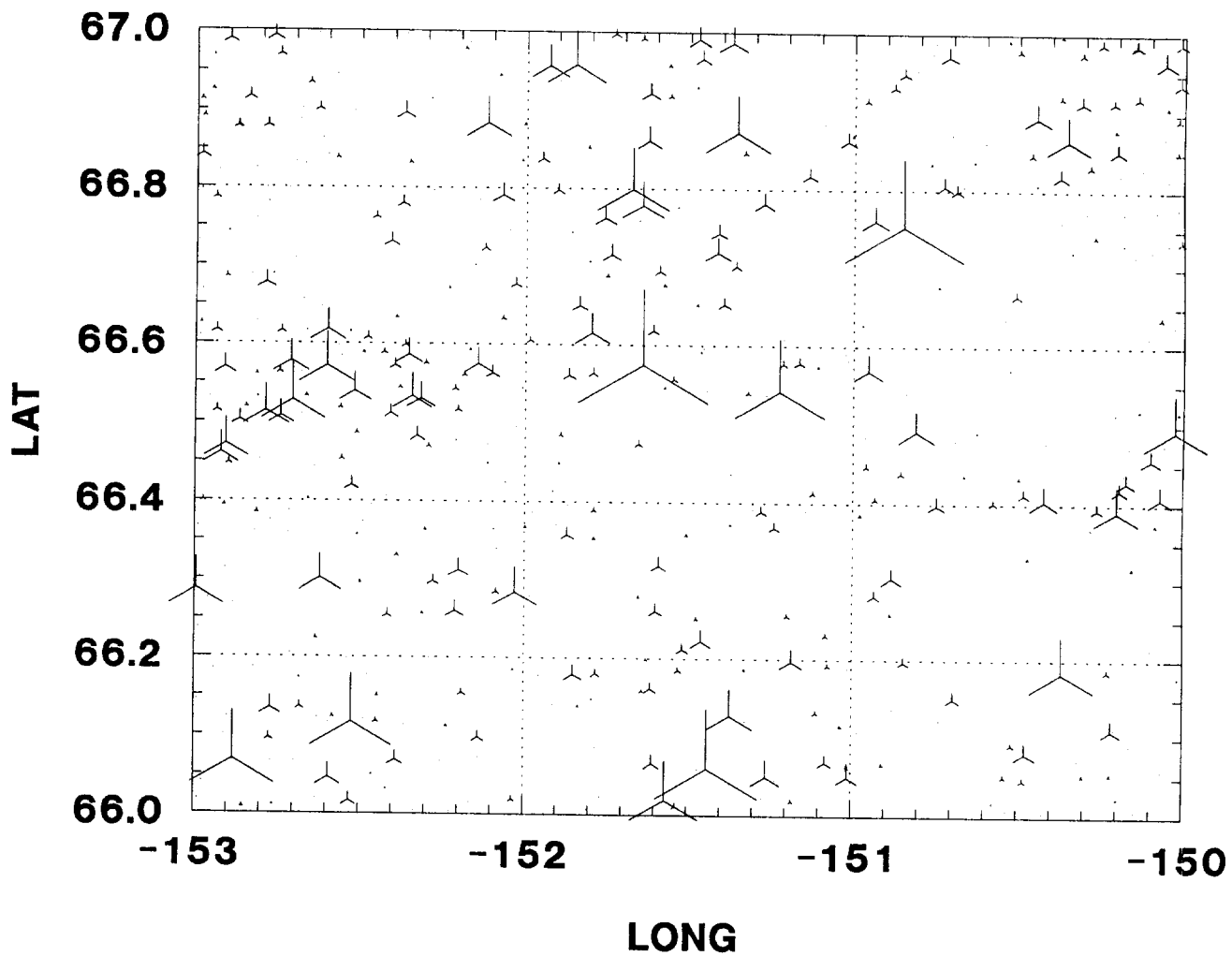
# BETZMAP NURE DATA FOR FE



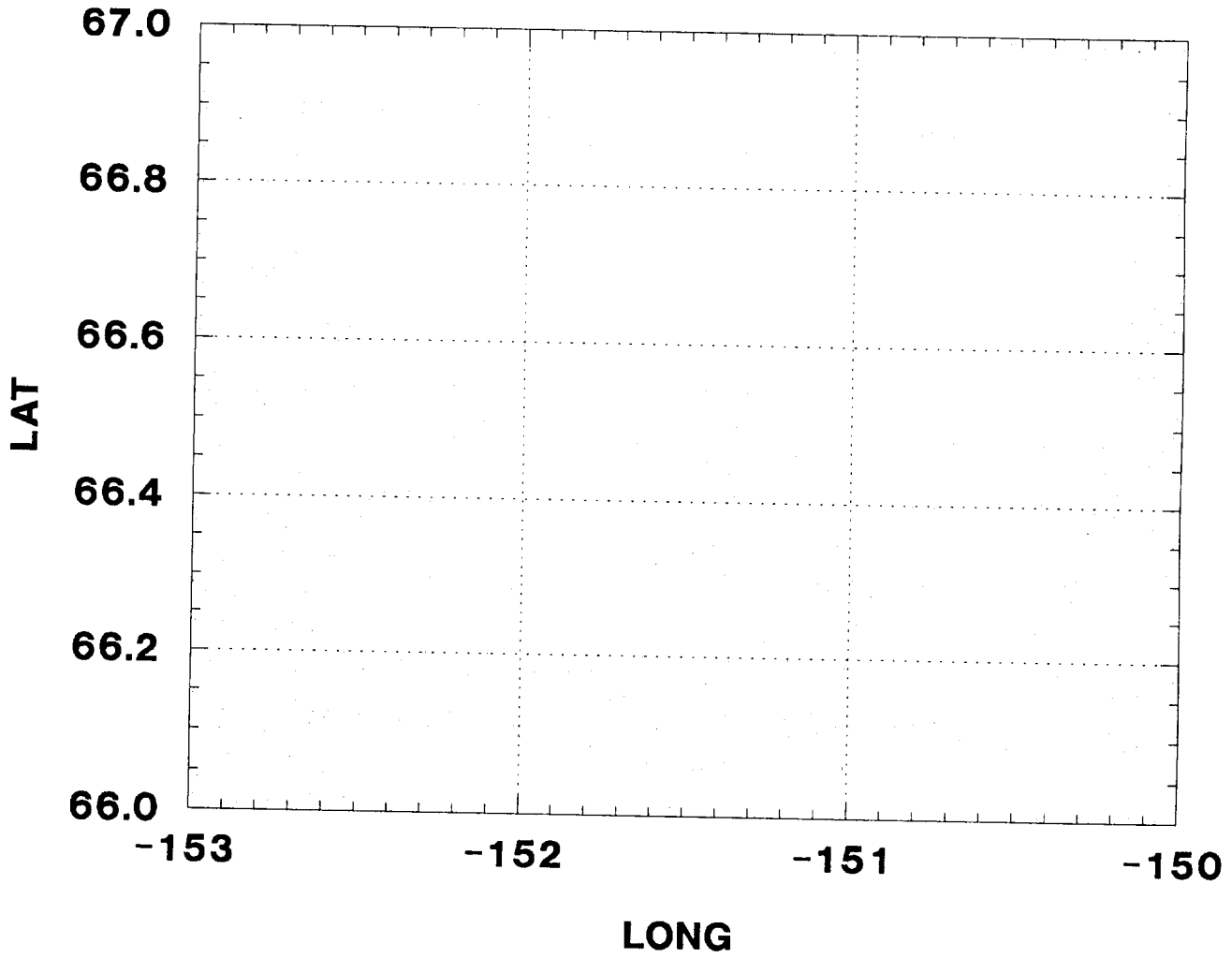
# BETZMAP NURE DATA FOR LA



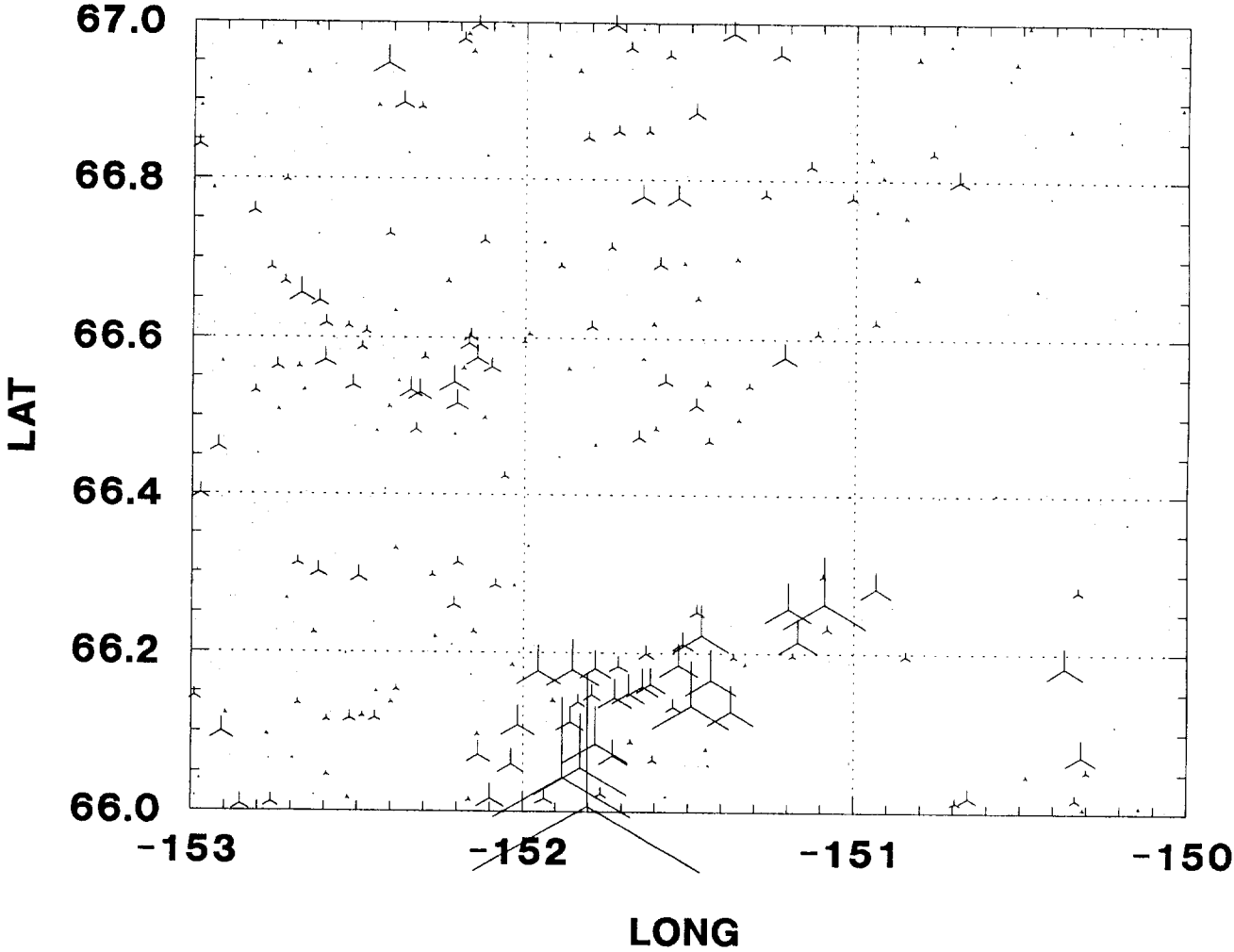
# BETZMAP NURE DATA FOR MN



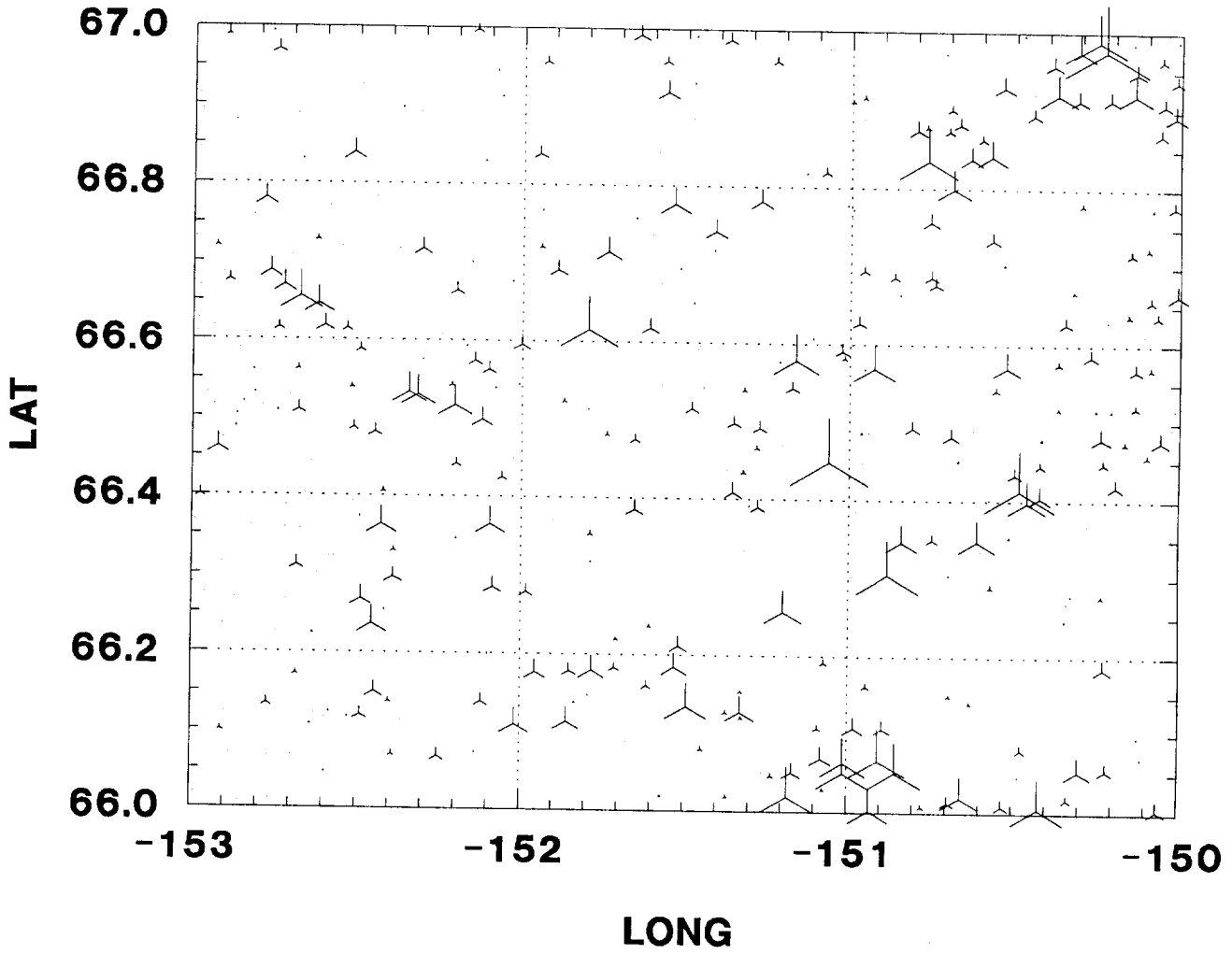
# BETZMAP NURE DATA FOR MO



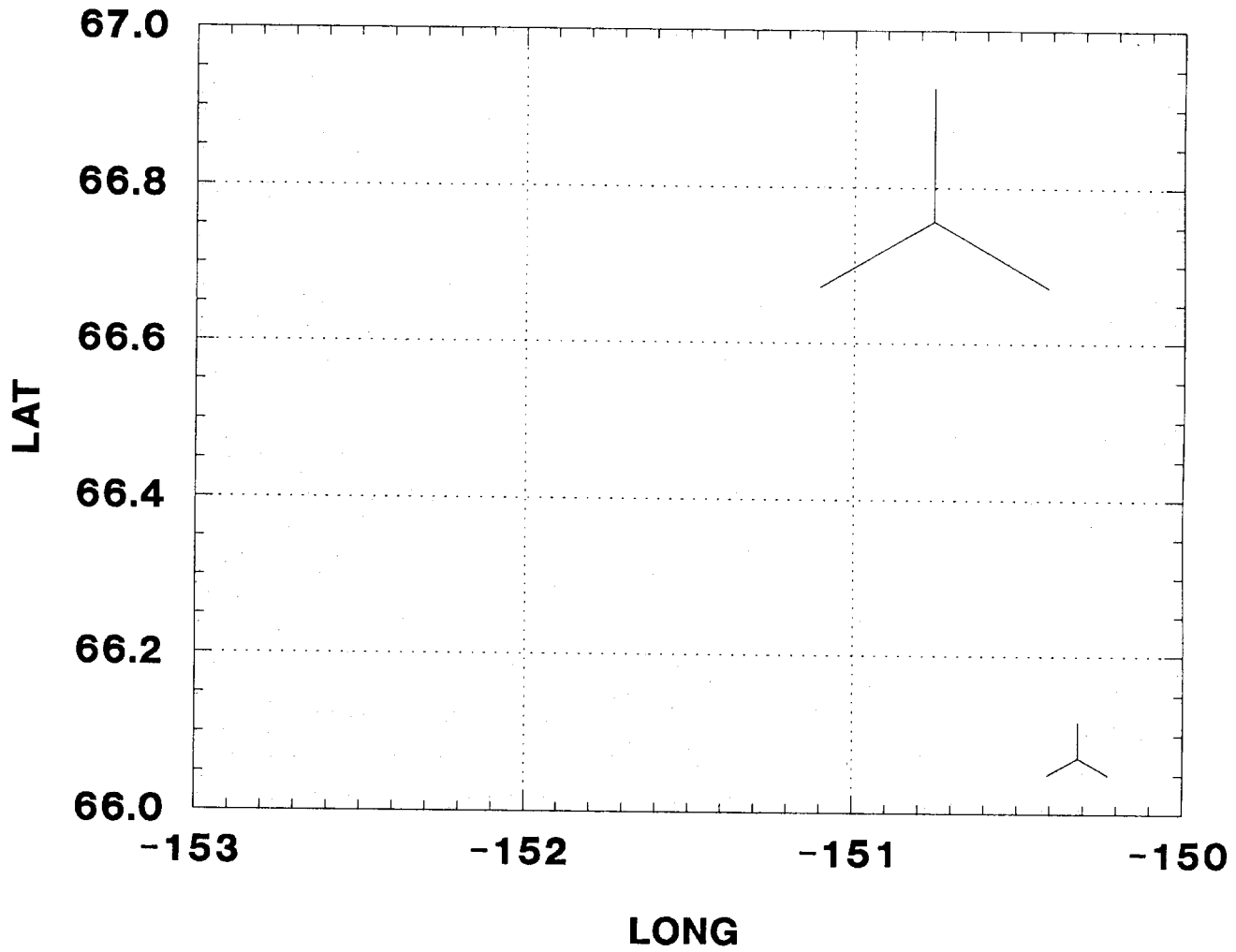
# BETZMAP NURE DATA FOR NI



# BETZMAP NURE DATA FOR PB

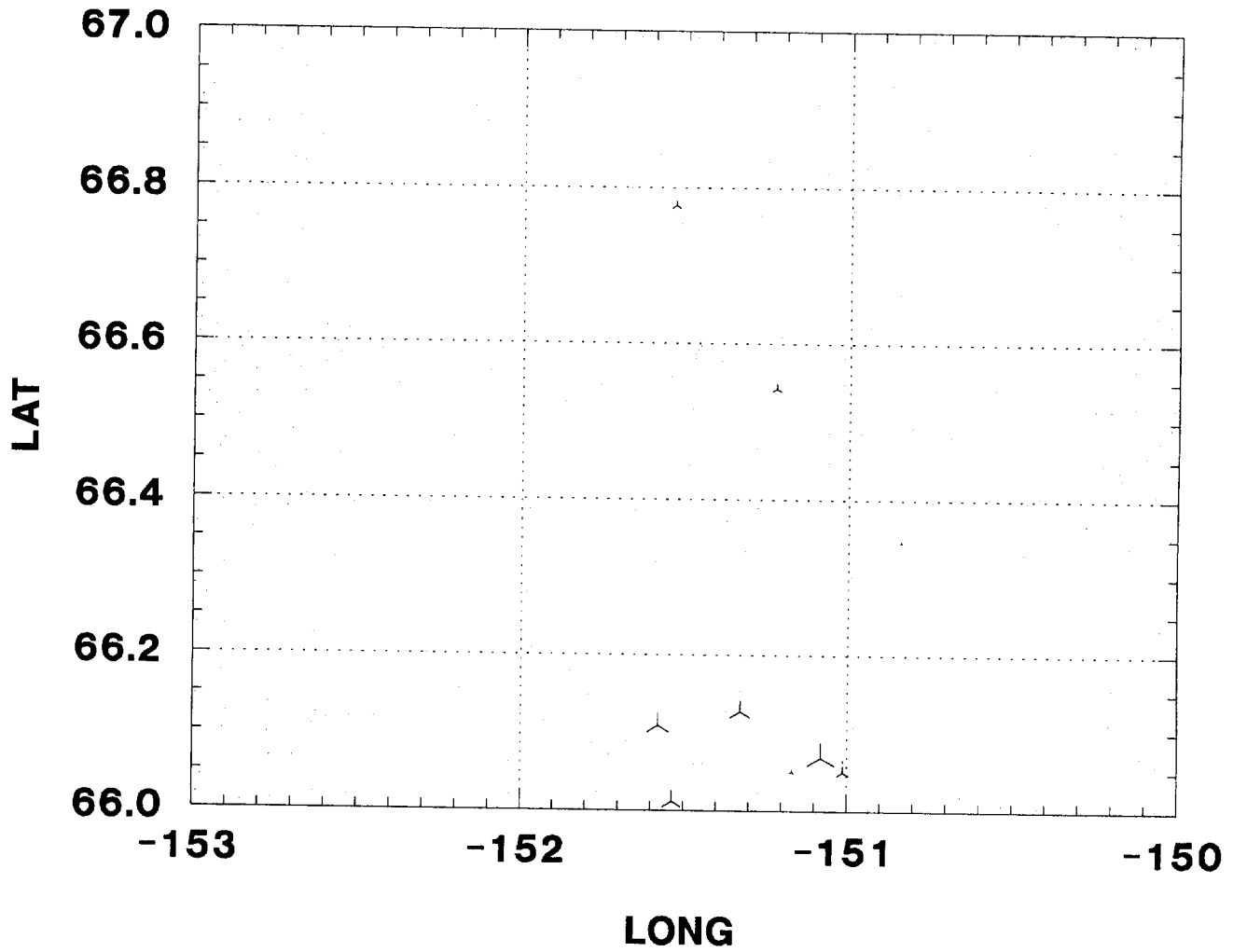


# BETZMAP NURE DATA FOR SB

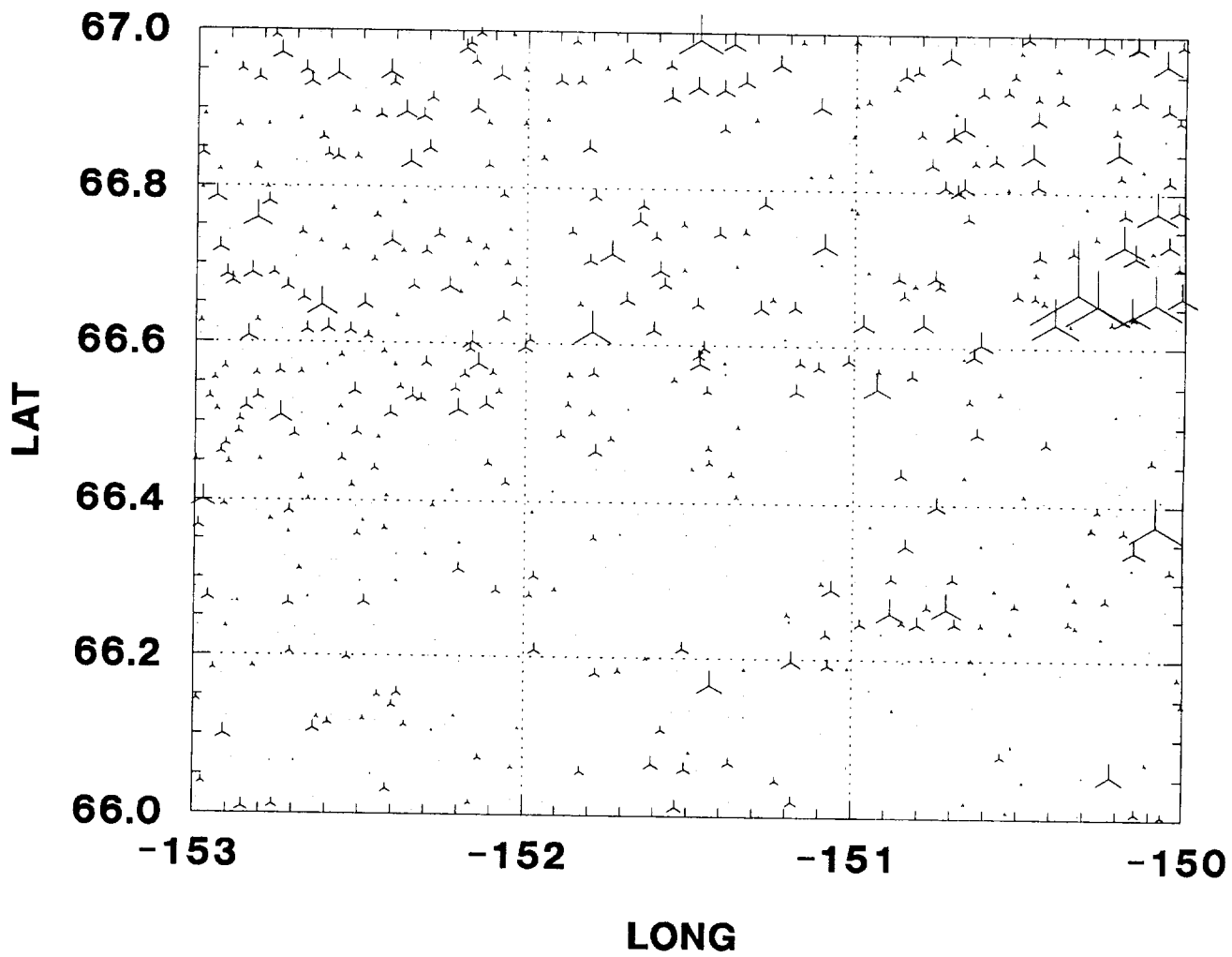




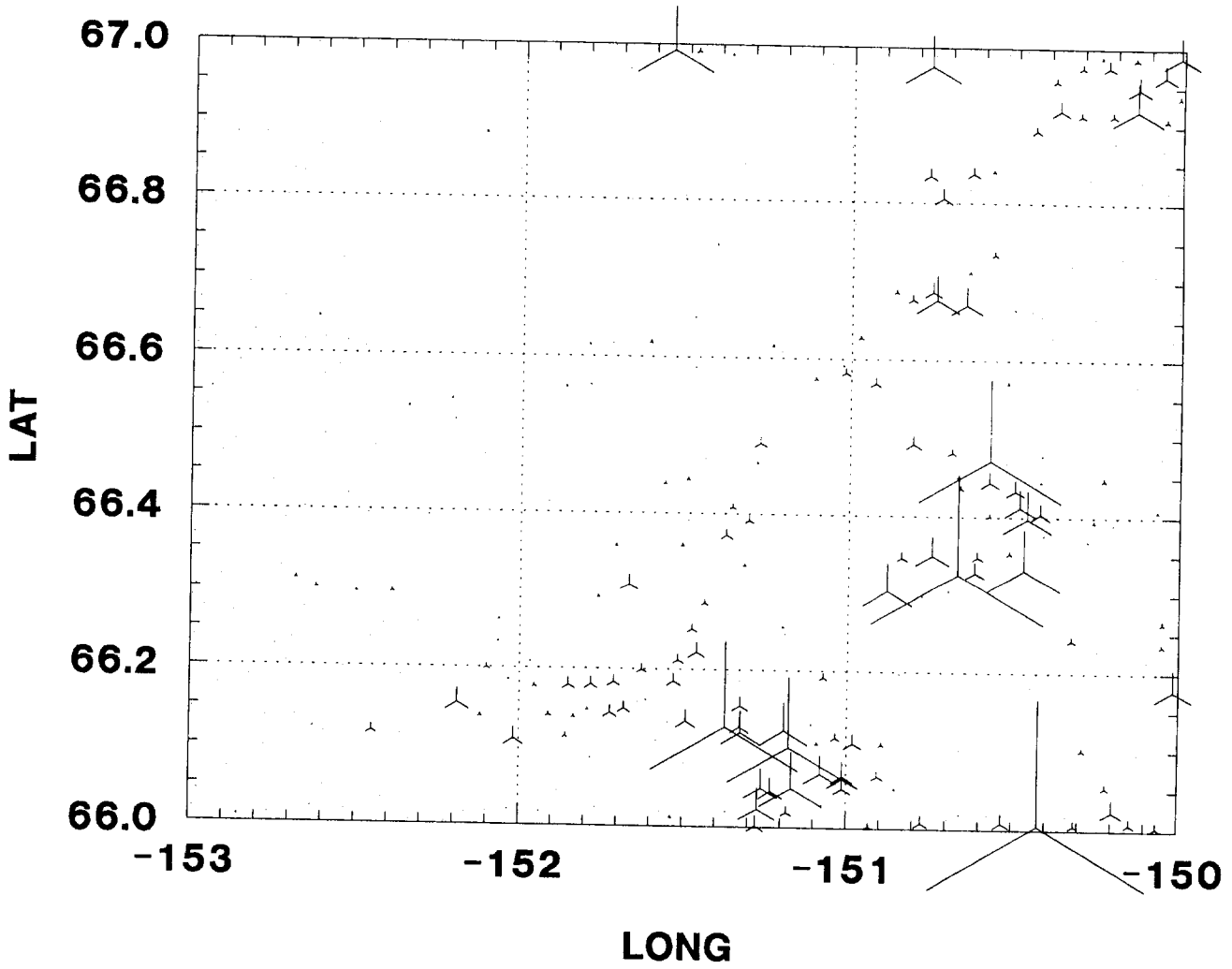
# BETZMAP NURE DATA FOR SN



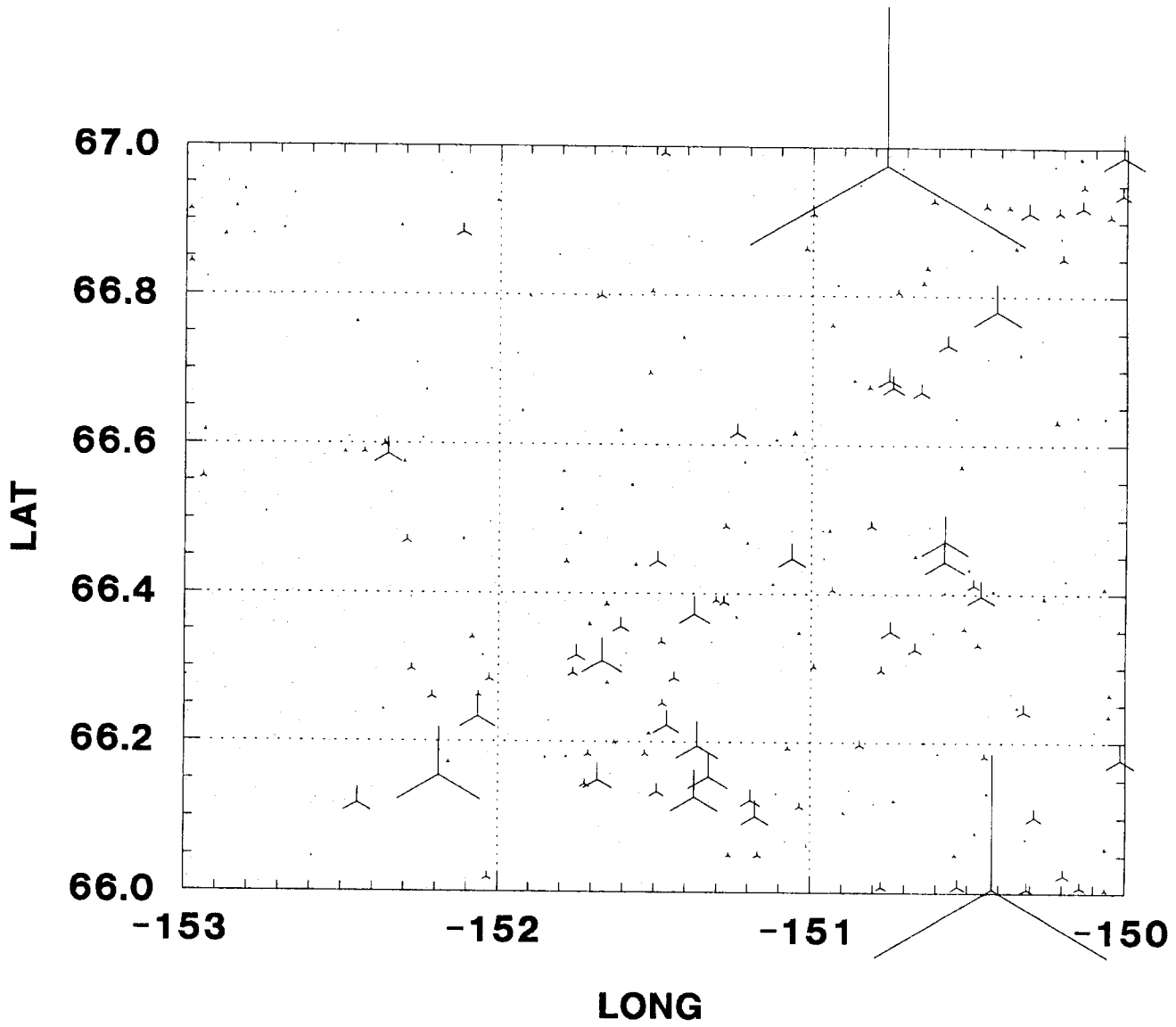
# BETZMAP NURE DATA FOR TI



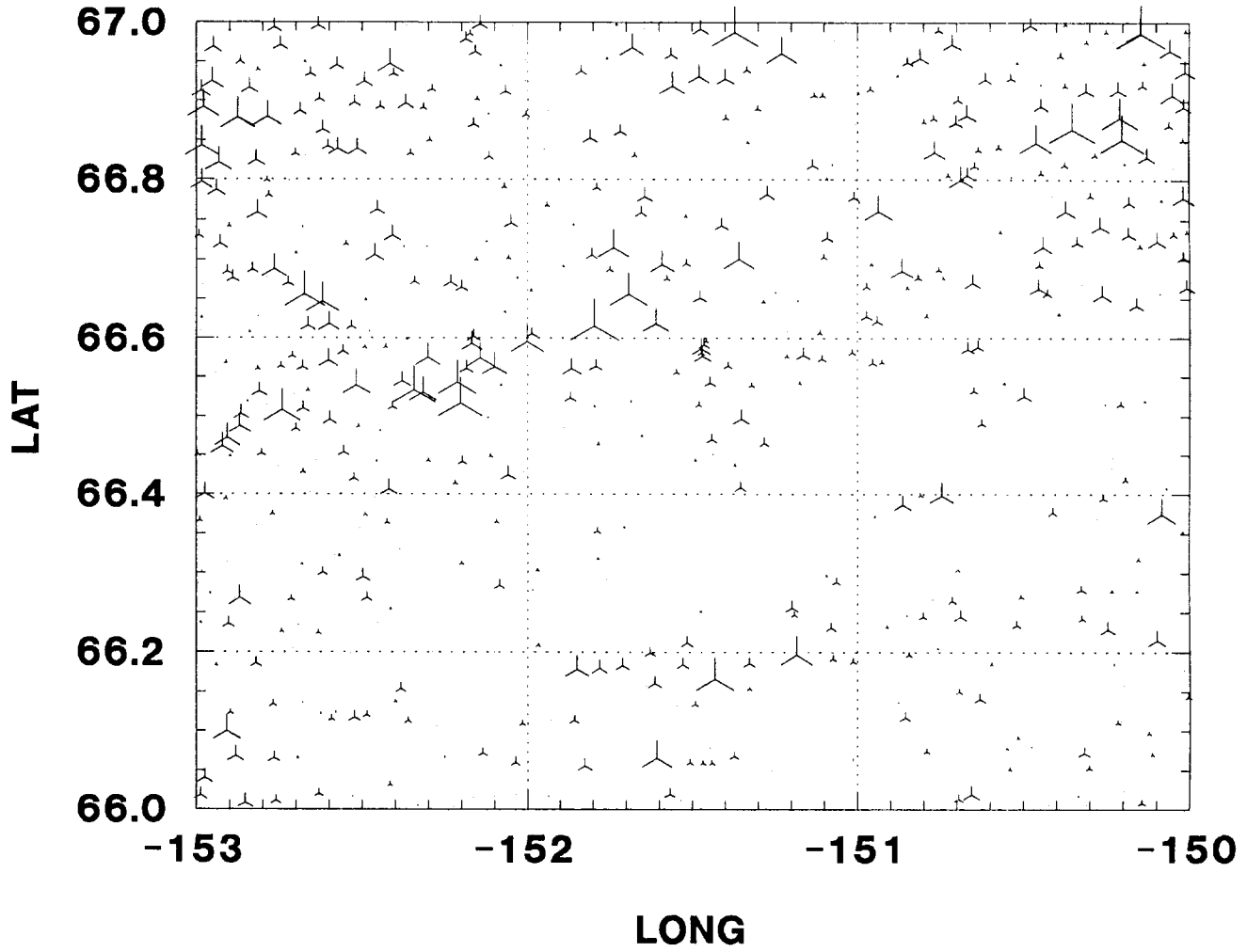
# BETZMAP NURE DATA FOR U



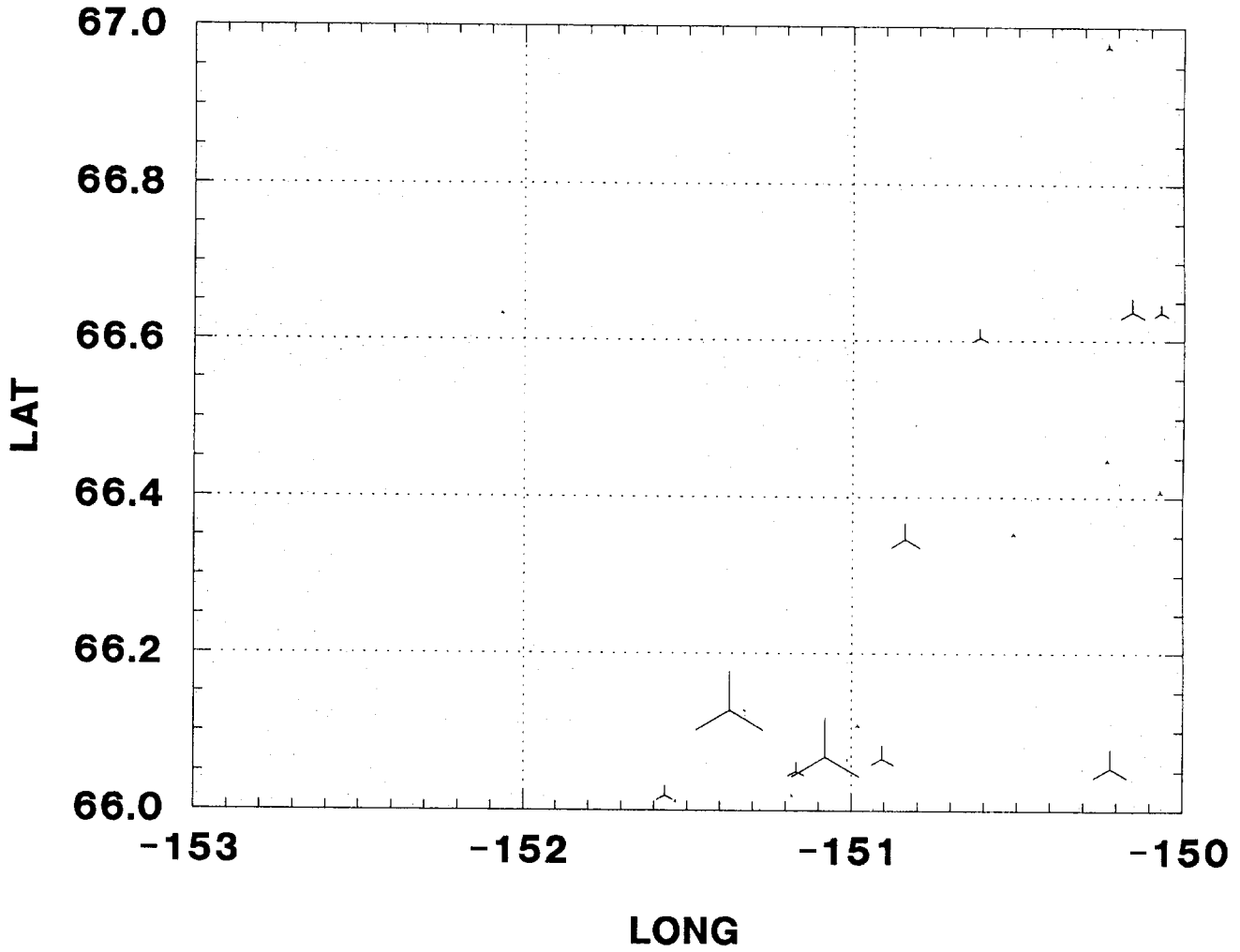
# BETZMAP NURE DATA FOR UTH



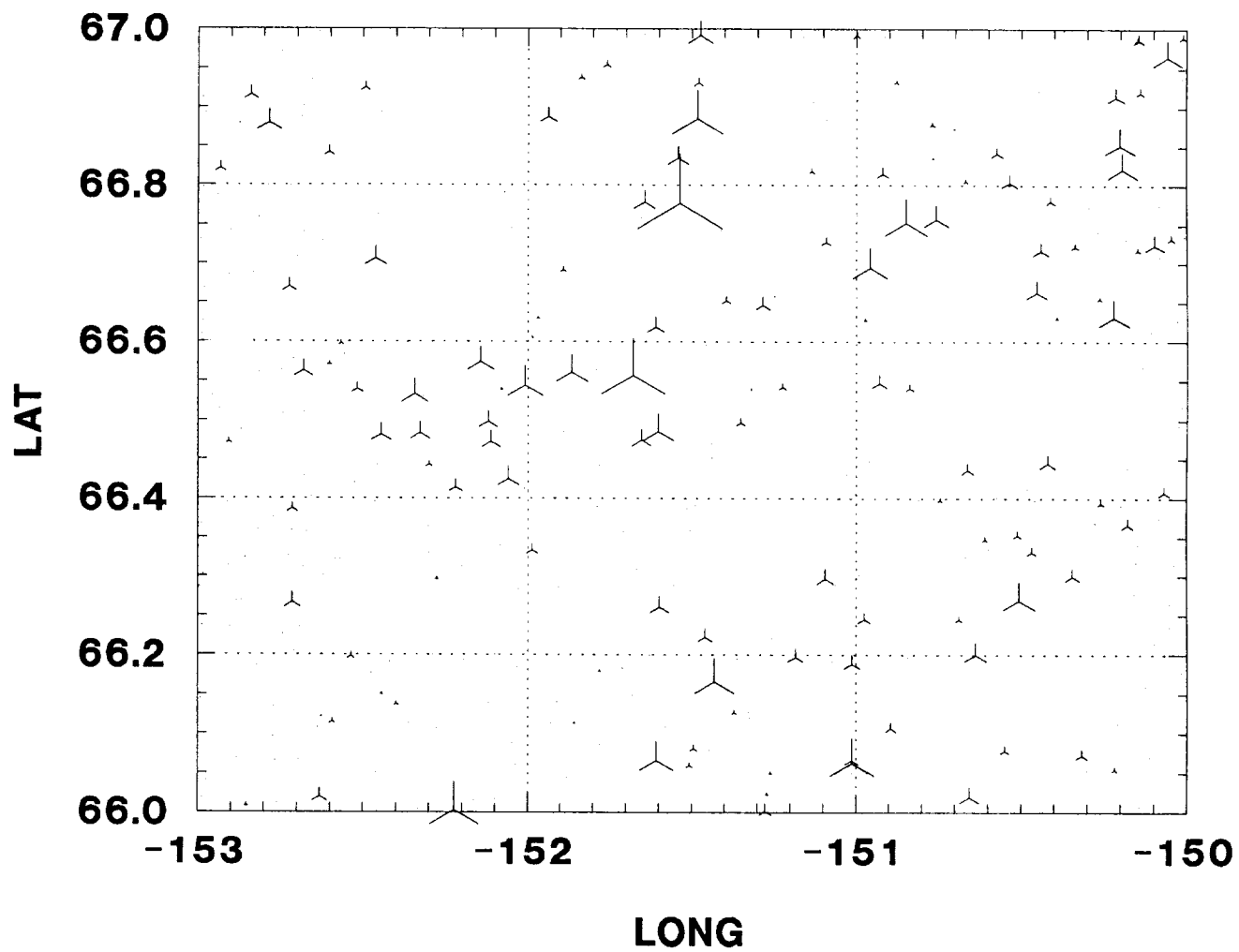
# BETZMAP NURE DATA FOR V



# BETZMAP NURE DATA FOR W



# BETZMAP NURE DATA FOR ZN



## APPENDIX A

## KEY TO SAMPLE TYPES

This numerical key provides the necessary tie between the specific type or form of each sample taken and each individual suite of field and laboratory data to which the sample relates. It defines the various sample types collected by the LASL in the DOE HSSR for uranium.

The two-digit key number assigned to each sample type designates three distinct properties of the samples taken. These properties are: (a) The general sample source (spring, stream, dry stream, etc.); (b) The sample medium (water or sediment); and (c) The treatment given the sample in the field or laboratory prior to its analysis by the LASL.

The key numbers are inserted in the sample type columns of the specially formatted DOE sample numbering system to positively identify the sample type for all LASL sample data submitted.

<u>KEY NO.</u>	<u>SOURCE / MEDIUM / TREATMENT</u>
01	- <u>Spring water sample untreated.</u>
02	- <u>Stream water sample untreated.</u>
03	- <u>Well water sample untreated.</u>
04	- <u>Natural pond water sample untreated.</u>
05	- <u>Artificial pond water sample untreated.</u>
06	- <u>Spring water sample filtered</u> through a 0.45- $\mu$ membrane filter <u>and acidified</u> to a pH of <u><math>\leq 1</math></u> with reagent-grade nitric acid ( $\text{HNO}_3$ ).
07	- <u>Stream water sample filtered</u> through a 0.45- $\mu$ membrane filter <u>and acidified</u> to a pH of <u><math>\leq 1</math></u> with reagent-grade nitric acid ( $\text{HNO}_3$ ).
08	- <u>Well water sample filtered</u> through a 0.45- $\mu$ membrane filter <u>and acidified</u> to a pH of <u><math>\leq 1</math></u> with reagent-grade nitric acid ( $\text{HNO}_3$ ).
09	- <u>Natural pond water sample filtered</u> through a 0.45- $\mu$ membrane filter <u>and acidified</u> to a pH of <u><math>\leq 1</math></u> with reagent-grade nitric acid ( $\text{HNO}_3$ ).
10	- <u>Artificial pond water sample filtered</u> through a 0.45- $\mu$ membrane filter <u>and acidified</u> to a pH of <u><math>\leq 1</math></u> with reagent-grade nitric acid ( $\text{HNO}_3$ ).
11	- <u>Wet spring sediment sample dried</u> at <u><math>\leq 100^\circ\text{C}</math></u> and sieved <u>to -100 mesh</u> through stainless steel sieves.
12	- <u>Wet stream sediment sample dried</u> at <u><math>\leq 100^\circ\text{C}</math></u> <u>and sieved to -100 mesh</u> through stainless steel sieves.
13	- <u>Wet natural pond sediment sample dried</u> at <u><math>\leq 100^\circ\text{C}</math></u> <u>and sieved to -100 mesh</u> through stainless steel sieves.



- 14 - Wet artificial pond sediment sample dried at  $\leq 100^{\circ}\text{C}$  and sieved to -100 mesh through stainless steel sieves.
- 15 - Dry stream sediment sample dried at  $\leq 100^{\circ}\text{C}$  (if necessary) and sieved to -100 mesh through stainless steel sieves.
- 26 - Spring water sample acidified to a pH of  $\leq 1$  with reagent-grade nitric acid ( $\text{HNO}_3$ ).
- 27 - Stream water sample acidified to a pH of  $\leq 1$  with reagent-grade nitric acid ( $\text{HNO}_3$ ).
- 29 - Natural pond or lake water sample acidified to a pH of  $\leq 1$  with reagent-grade nitric acid ( $\text{HNO}_3$ ).
- 31- Wet spring sediment sample dried at  $\leq 100^{\circ}\text{C}$  and sieved to -40 mesh through stainless steel sieves.
- 32- Wet stream sediment sample dried at  $\leq 100^{\circ}\text{C}$  and sieved to -40 mesh through stainless steel sieves.
- 33- Wet natural lake sediment sample dried at  $\leq 100^{\circ}\text{C}$  and sieved to -40 mesh through stainless steel sieves.
- 35- Dry stream sediment sample dried at  $\leq 100^{\circ}\text{C}$  and sieved to -40 mesh through stainless steel sieves.
- 41- Wet spring sediment sample dried at  $\leq 100^{\circ}\text{C}$  and sieved to -80 mesh through stainless steel sieves.
- 42- Wet stream sediment sample dried at  $\leq 100^{\circ}\text{C}$  and sieved to -80 mesh through stainless steel sieves.
- 43- Wet natural lake sediment sample dried at  $\leq 100^{\circ}\text{C}$  and sieved to -80 mesh through stainless steel sieves.
- 45- Dry stream sediment sample dried at  $\leq 100^{\circ}\text{C}$  and sieved to -80 mesh through stainless steel sieves.
- 51- Wet spring sediment sample dried at  $\leq 100^{\circ}\text{C}$  and sieved to -170 mesh through stainless steel sieves.
- 52- Wet stream sediment sample dried at  $\leq 100^{\circ}\text{C}$  and sieved to -170 mesh through stainless steel sieves.
- 53- Wet natural lake sediment sample dried at  $\leq 100^{\circ}\text{C}$  and sieved to -170 mesh through stainless steel sieves.
- 55- Dry stream sediment sample dried at  $\leq 100^{\circ}\text{C}$  and sieved to -170 mesh through stainless steel sieves.
- 61- Wet spring sediment sample dried at  $\leq 100^{\circ}\text{C}$  and sieved to -230 mesh through stainless steel sieves.
- 62- Wet stream sediment sample dried at  $\leq 100^{\circ}\text{C}$  and sieved to -230 mesh through stainless steel sieves.
- 63- Wet natural lake sediment sample dried at  $\leq 100^{\circ}\text{C}$  and sieved to -230 mesh through stainless steel sieves.

- 65- Dry stream sediment sample dried at  $-100^{\circ}\text{C}$  and sieved to -230 mesh through stainless steel sieves.
- 71- Sediment sample collected from the stream bank, dried at  $\leq 100^{\circ}\text{C}$ , and sieved to -40 mesh through stainless steel sieves.
- 72- Sediment sample collected from the stream bank, dried at  $\leq 100^{\circ}\text{C}$ , and sieved to -80 mesh through stainless steel sieves.
- 73- Sediment sample collected from the stream bank, dried at  $\leq 100^{\circ}\text{C}$ , and sieved to -100 mesh through stainless steel sieves.
- 74- Sediment sample collected from the stream bank, dried at  $\leq 100^{\circ}\text{C}$ , and sieved to -170 mesh through stainless steel sieves.
- 75- Sediment sample collected from the stream bank, dried at  $\leq 100^{\circ}\text{C}$ , and sieved to -230 mesh through stainless steel sieves.
- 96 - Dry natural pond sediment sample dried at  $\leq 100^{\circ}\text{C}$  (if necessary) and sieved to -100 mesh through stainless steel sieves.
- 97 - Dry artificial pond sediment sample dried at  $\leq 100^{\circ}\text{C}$  (if necessary) and sieved to -100 mesh through stainless steel sieves.
- 98 - Other water      These key numbers are to be used only for water (98) or sediment (99) samples coming from a special source and/or given a special treatment not described for any of the types of samples above.
- 99 - Other sediment

PDF 91 - 22: ERRATA

ONE ELEMENT WAS OMITTED FROM LISTING OF  
ELEMENTS ON DISK. THAT ELEMENT WAS  
....SE.....IT SHOULD GO BETWEEN AS AND ZR.

CORRECT ORDER OF ELEMENTS ON FILE IS:

U AG BI CD CU NB NI PB SN  
W AS SE ZR MO BE LI AL AU  
BA CA CE CL CO CR CS DY EU  
FE HF K LA LU MN MG NA RB  
SB SC SM SR TA TB TH TI V  
YB ZN and U/TH

## PDF 91-22 - UPDATE

The section of PDF 91-22 which describes the format of the NURE data as it is available on computer disk has changed. Instead of all data on one file/quadrangle in columnar format separated by blanks, it is now split into 3 files/quadrangle with commas and blanks separating the fields. The new files are named "NXXX#.ASC". N is for NURE data, XXX is the 3 character quadrangle identification, and # is 1, 2, or 3. This new version will make it easier for users to input the data directly into Quatro-Pro, Lotus, or other spread sheets with a 250 character limit on record length. In Quatro-Pro use IMPORT option, ASCII file, QUOTE & COMMA delimited. Two records were added in front of the data:

- 1.) a header record which says  
"Part <n>, Quadrangle: <name>"
- 2.) a record with column headings so users can tell which elements are in the file and the order. The column headings are comma and blank delimited too. The data is still in ASCII format and the commas can be eliminated by using a variety of text editors.

Following are the formats of the 3 files. Column 1 was left blank for all records so that all data in the files could be printed even when the first item is interpreted as a carriage control character.

### FILE 1:

Record 1: 55 Characters of text. - starts col 2 and length depends on length of quadrangle name. It is enclosed in quotes.

Record 2: col 2-39

"Samp-Id", "RC", "Lat.", "Long.", "ST" (Sample Type--see main text)

Starting in col 40, 14 groups of: , "Xx" which are the elements names for the columns. For this record they are: U, Ag, Bi, Cd, Cu, Nb, Ni, Pb, Sn, W, As, Se, Zr, and Mo. NOTE: There is NOT a comma after the last item and all items are enclosed in quotes.

Record 3 to end:

col 2-8. 7 digit sample number.

col 9-10 ", " - a comma followed by a blank

col 11-13 replicate code - 3 digits allowed, most values will be 0 or 1 digit.

col 14-24 ", " followed by Latitude in decimal degrees with 5 decimal places

col 25-35 ", " followed by Longitude in decimal degrees with 5 decimal places

col 36-39 ", " followed by 2 digit sample type

Starting in col 40, 17 groups of ", " (comma) followed by 8 digit value of element in ppm.

Decimal point is present. None of the values require all 8 digits so that leaves a blank space after the comma. NOTE: no comma after the last item.

### FILE 2:

Record 1: - Same as for file 1

Record 2: col 2 to 8 - "Samp-Id"

Starting in col 9, 17 groups of: , "Xx", which are element names for the columns. For this file they are: Be, Li, Al, Au, Ba, Ca, Ce, Cl, Co, Cr, Cs, Dy, Eu, Fe, Hf, K, and La. NOTE: no comma at end and items enclosed in quotes.

Record 3 to end:

Col 2-8 7 digit sample number.

Starting in col 9, 17 groups of ", " followed by 8 eight digit value of element. As in File 1.

FILE 3: Same format as file 2 with different elements. The elements are: Lu, Mn, Mg, Na, Rb, Sb, Sc, Sm, Sr, Ta, Tb, Th, Ti, V, Yb, Zn, and U/Th

NOTE: In the original listing of the elements, Se was accidentally left out. It goes between As and Zr.

A copy of this file is included on disk. It is labeled README.NUR. If there are any problems reading this data contact Shirley Liss at DGGS. (907) - 474 - 7147.