

Public-data File 91-22k

**NATIONAL URANIUM RESOURCE EVALUATION GEOCHEMICAL
DATA FOR STREAM- AND LAKE-SEDIMENT SAMPLES IN THE
CHARLEY RIVER QUADRANGLE, ALASKA**

by

M.A. Wiltse

Alaska Division of
Geological & Geophysical Surveys

December 1990

THIS REPORT HAS NOT BEEN REVIEWED FOR
TECHNICAL CONTENT (EXCEPT AS NOTED IN
TEXT) OR FOR CONFORMITY TO THE
EDITORIAL STANDARDS OF DGGS.

794 University Avenue, Suite 200
Fairbanks, Alaska 99709-3645

**NATIONAL URANIUM RESOURCE EVALUATION GEOCHEMICAL DATA
FOR STREAM- AND LAKE-SEDIMENT SAMPLES IN THE
CHARLEY RIVER QUADRANGLE, ALASKA**

by
M.A. Wiltse

INTRODUCTION

Purpose:

In December of 1990 the Alaska Division of Geological and Geophysical Surveys (ADGGS) began a mineral resource evaluation of those lands still available for state selection under the Alaska Statehood Act. As part of that process ADGGS is reviewing the stream- and lake-sediment geochemical data generated during the U.S. Department of Energy, National Uranium Resource Evaluation (NURE) program.

This Public-data File has been released so that a summary of that data is available to interested persons. This publication has not been formally reviewed for technical accuracy or for conformity to the editorial standards of ADGGS.

Scope of data:

ADGGS has reviewed NURE geochemical data for the following 1:250,000 quadrangles:

Anchorage	ANC
Baird Mountains	XBM
Beaver	BVR
Bendeleben	BEN
Bering Glacier	XBG
Bettles	BET
Big Delta	XBD
Black River	BLR
Candle	CAN
Chandalar	CHN
Charley River	CHR
Circle	CIR
Eagle	EAG
Gulkana	GUL
Healy	HEA
Hughes	HUG
Iditarod	IDT
Kateel River	KAT
Lime Hills	LIM
Livengood	LIV
Medfra	MED
Melozitna	MLZ
Misheguk Mountain	MIS
Mount Hayes	XMH
Nabesna	NAB

Nome	NOM
Norton Bay	NOB
Nulato	NUT
Phillip Smith Mountains	PSM
Point Hope	XPH
Point Lay	XPL
Ruby	RUB
Selawik	SLK
Shungnak	SHU
Sleetmute	SLT
Solomon	SOL
Talkeetna Mountains	TLM
Tanacross	TNX
Tanana	TAN
Teller	TEL
Umiat	UMI
Unalakleet	UKT
Utukok River	XUR
Valdez	VAL
Wiseman	WIS

Limitations of data:

Our review has been limited to the following elements: Ag, As, Au, Ba, Be, Bi, Cd, Co, Cr, Cu, Fe, La, Mn, Mo, Ni, Pb, Sb, Sn, Ti, U, U/Th, V, W, Zn

The Nure data set also contains analyses for: Al, Ca, Ce, Cl, Cs, Dy, Eu, Hf, K, Li, Lu, Mg, Na, Nb, Rb, Sc, Sm, Sr, Ta, Tb, Th, Yb, Zr. These data have not been analyzed in the present study.

Because of the procedures used in generating the initial chemical analyses, the NURE geochemical data set has severe limitations. Many elements were determined at only a few sample sites resulting in many samples having incomplete data coverage. The detection limit for many elements is high, making those data of limited effectiveness in delineating mineral resources. Regardless of these and other shortcomings, however, the NURE data do provide information concerning mineralization in many poorly accessible parts of Alaska.

Contents:

This Public-data File (PDF), and the PDF's for the above listed quadrangles, contain a columnar ASCII file on a 5 1/4" high density floppy disk that includes: sample number, replicate code, sample type code, latitude, longitude, and the complete set of elemental analyses available for each sample in the quadrangle. These data are consistently ordered in the file as shown below:

Sample number, Replicate code, Latitude, Longitude, Sample-type code, U Ag Bi Cd Cu Nb Ni
Pb Sn W As Zr Mo Be Li Al Au Ba Ca Ce Cl Co Cr Cs Dy Eu Fe Hf K La Lu Mn Mg Na Rb Sb Sc
Sm Sr Ta Tb Th Ti V Yb Zn U/Th

All values are entered as parts per million. The data file bears a three letter identification and the extension "ASC" (eg. EAG.ASC for the Eagle Quadrangle data file).

A sample replicate code of "0" indicates that the sample is the initial sample taken at a site and is the code found for most samples. Subsequent samples collected from the same site have successively

higher integer designations. Sample type codes range from "01" to "99". The definition of these codes is found in Appendix A "Key to Sample Types".

Within the elemental analysis fields of a sample, values of -999 indicate that no analyses was attempted for that element. Other negative numbers (eg. -5) in an elemental analysis field of a record indicate that the element was not detected at a level equal to the absolute value of the negative number tabulated.

TREATMENT OF DATA

Elements:

Although all the elemental NURE data available for a quadrangle is included in the digital ASCII file supplied with this PDF, only a 24 element subset of data was analyzed for this PDF: Ag, As, Au, Ba, Be, Bi, Cd, Co, Cr, Cu, Fe, La, Mn, Mo, Ni, Pb, Sb, Sn, Ti, U, U/Th, V, W, Zn.

Grouping of data:

The majority of the Alaska Nure geochemical data is derived from stream sediment or lake sediment samples. Many data sets, however, have a few samples that are subtypes of these two fundamental sample groups. For the purpose of the data review released in this PDF, all subtype samples have been recoded to either the stream sediment type or the lake sediment type, whichever type they most closely resembled. We estimate that less than 1 percent of the samples encountered in this review were recoded.

Following sample-type recoding, brief summary statistics were calculated separately for the stream sediment samples (type=12) and for the lake sediment samples (type=13). These statistics provide a quick reference to the number of samples that have analytical values exceeding the detection limit and provide an indication of the geochemical dispersion of the elements for each sample type.

Single-element Pseudomaps of the data have been made that show the location of all samples having analytical values greater than the mean. This was accomplished by separately standardizing the data for each sample type, recoding all standard scores that were less-than-or-equal-to-zero to zero and then plotting a symbol at each sample site, the size of which is proportional to the elemental standardized value (Z-score) at that sample site. Because Z-scores are measures of standard deviation, this procedure results in a pseudomap with varying symbol size that directly reflects how far a sample's element content is above the mean. The larger symbols correspond to element values that are farthest above the mean value for the element in question. A Symbol-size key is provided in figure 1 which indicates the symbol size for element abundances from 1 to 6 standard deviations above the mean.

THE FOLLOWING RESULTS ARE FOR:

TYPE = 12.000

TOTAL OBSERVATIONS: 900

	U	AG	BI	CD	CU
N OF CASES	900	4	15	18	842
MINIMUM	0.200	5.000	5.000	5.000	10.000
MAXIMUM	40.390	11.000	11.000	19.000	1180.000
MEAN	3.378	6.750	6.067	7.056	29.825
STANDARD DEV	2.866	2.872	1.580	3.733	44.722

	NI	PB	SN	W	AS
N OF CASES	783	520	17	31	810
MINIMUM	15.000	5.000	10.000	15.000	5.000
MAXIMUM	525.000	45.000	67.000	96.000	254.000
MEAN	37.174	9.152	22.353	24.065	15.659
STANDARD DEV	36.665	5.839	17.776	15.286	17.114

	MO	BE	AU	BA	CO
N OF CASES	0	0	7	813	878
MINIMUM	.	.	0.060	326.000	3.000
MAXIMUM	.	.	0.460	6913.000	173.200
MEAN	.	.	0.259	1022.483	20.103
STANDARD DEV	.	.	0.155	461.201	14.096

	CR	FE	MN	SB	TI
N OF CASES	840	887	900	35	809
MINIMUM	17.000	3428.000	62.000	2.000	1284.000
MAXIMUM	1101.000	244900.000	37020.000	47.000	14500.000
MEAN	103.696	35243.256	897.957	8.886	4595.443
STANDARD DEV	71.778	20881.680	1573.422	10.026	1356.474

	V	ZN	UTH	LA
N OF CASES	864	342	826	801
MINIMUM	20.000	43.000	0.183	15.000
MAXIMUM	986.000	3063.000	5.113	165.000
MEAN	128.295	154.184	0.409	36.593
STANDARD DEV	50.170	174.599	0.245	13.430

THE FOLLOWING RESULTS ARE FOR:
 TYPE = 13.000

TOTAL OBSERVATIONS: 353

	U	AG	BI	CD	CU
N OF CASES	353	0	1	3	301
MINIMUM	0.200	.	5.000	5.000	10.000
MAXIMUM	16.200	.	5.000	25.000	96.000
MEAN	2.197	.	5.000	12.000	29.213
STANDARD DEV	1.555	.	.	11.269	10.959

	NI	PB	SN	W	AS
N OF CASES	248	165	1	2	274
MINIMUM	15.000	5.000	12.000	18.000	5.000
MAXIMUM	1348.000	22.000	12.000	22.000	264.000
MEAN	35.085	7.776	12.000	20.000	12.482
STANDARD DEV	86.770	2.757	.	2.828	17.600

	MO	BE	AU	BA	CO
N OF CASES	0	0	1	237	310
MINIMUM	.	.	0.060	290.000	3.700
MAXIMUM	.	.	0.060	1487.000	575.400
MEAN	.	.	0.060	970.895	27.681
STANDARD DEV	.	.	.	216.049	43.094

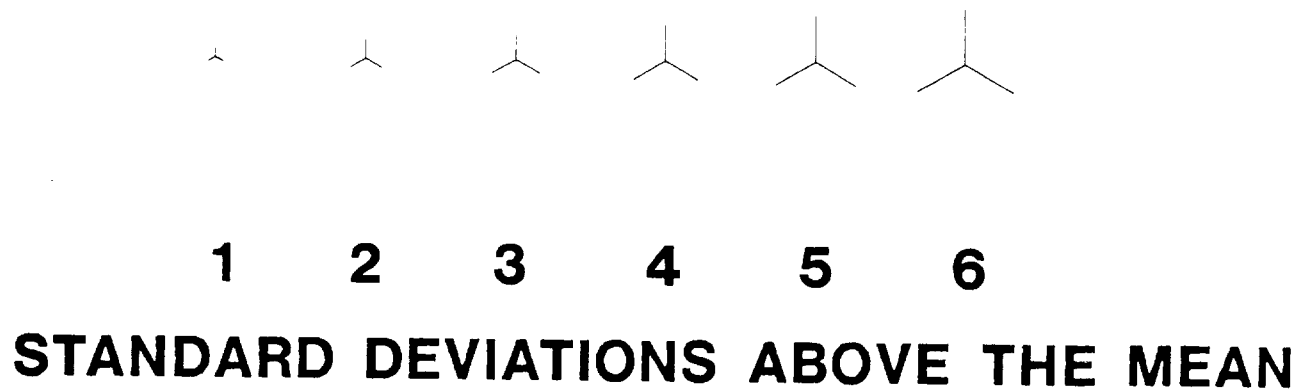
	CR	FE	MN	SB	TI
N OF CASES	250	308	353	3	234
MINIMUM	21.000	2392.000	49.000	3.000	1176.000
MAXIMUM	297.000	339500.000	18570.000	5.000	5643.000
MEAN	80.588	26331.890	603.884	4.000	3987.385
STANDARD DEV	24.246	26995.121	1312.920	1.000	799.639

	V	ZN	UTH	LA
N OF CASES	292	88	238	213
MINIMUM	15.000	50.000	0.074	15.000
MAXIMUM	442.000	1602.000	2.842	134.000
MEAN	103.620	165.636	0.401	31.042
STANDARD DEV	47.182	199.214	0.222	8.988

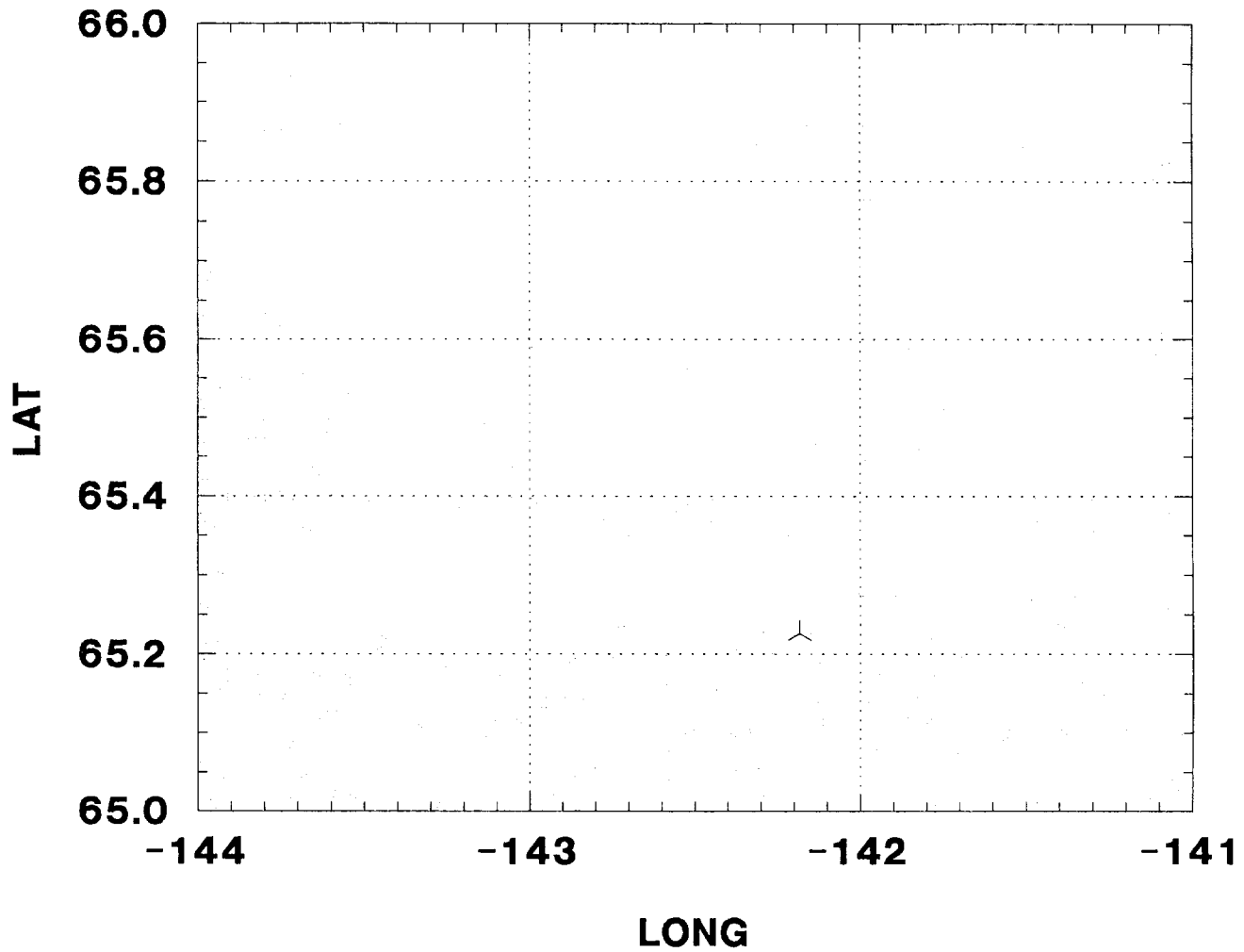
THESE RESULTS ARE FOR CHRL NURE DATA

TOTAL OBSERVATIONS: 1253

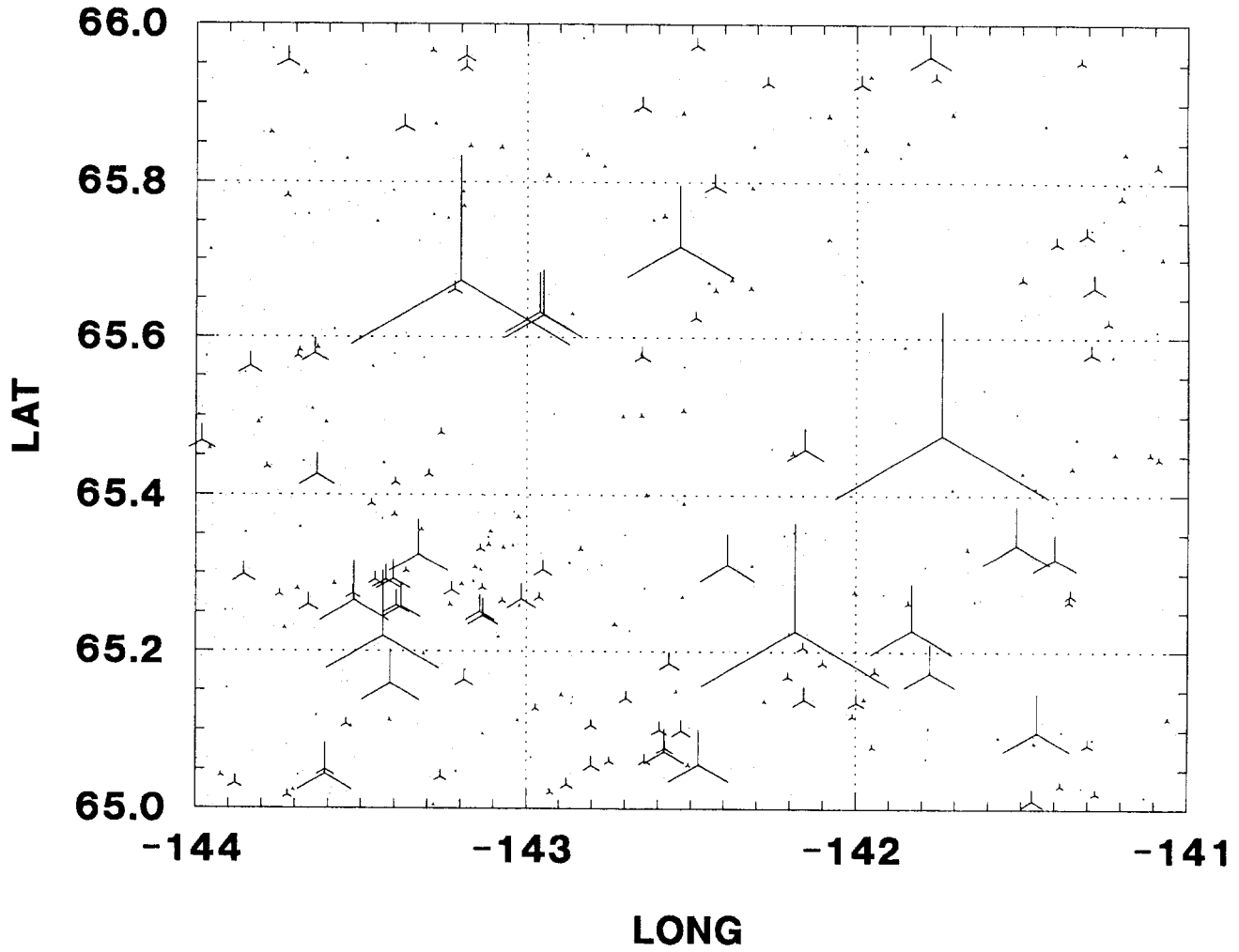
Figure 1. Symbol-size key for single element pseudomaps indicating the size of plotted symbols for values that are from 1 to 6 standard deviations above the mean.



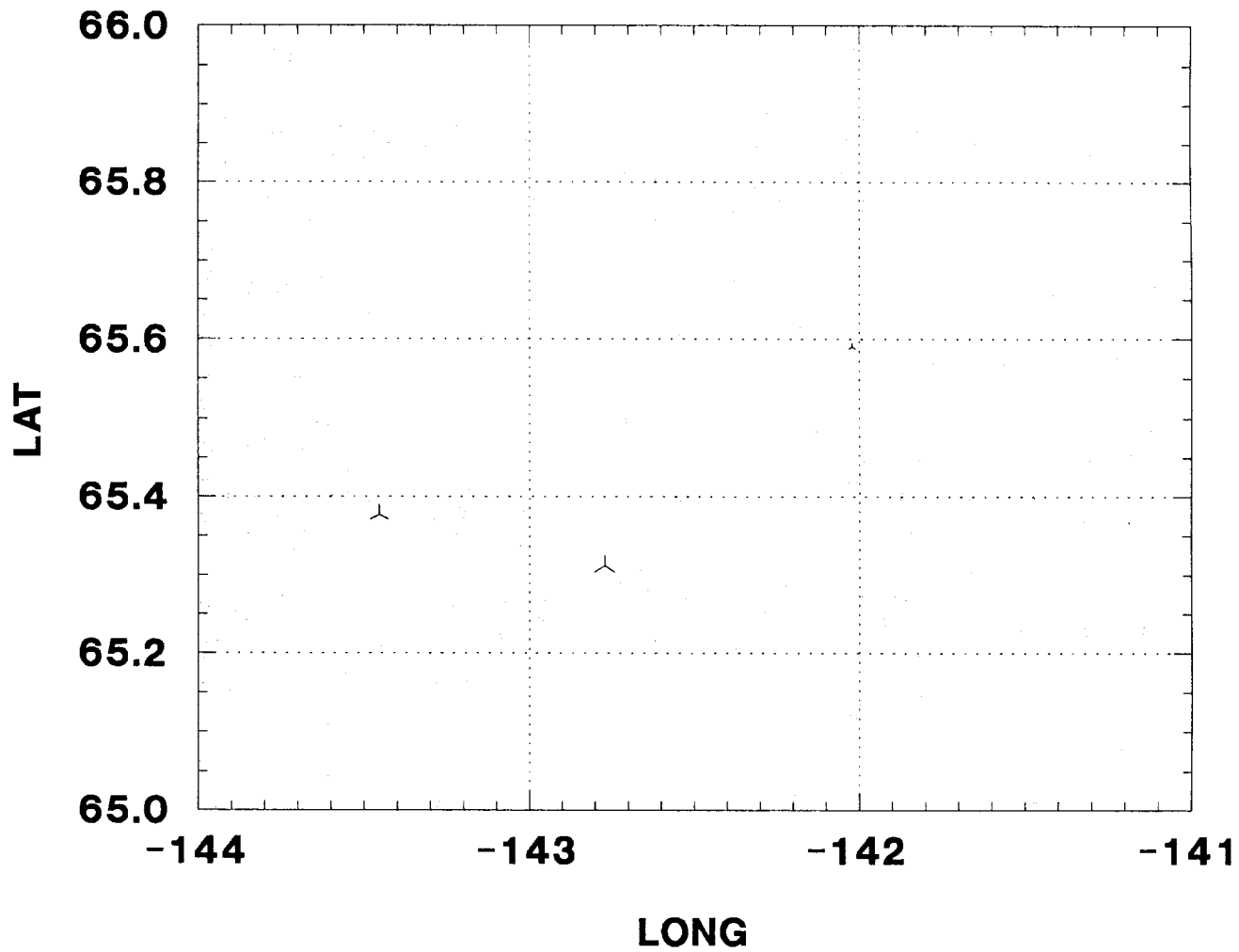
CHRMZMAP NURE DATA FOR AG



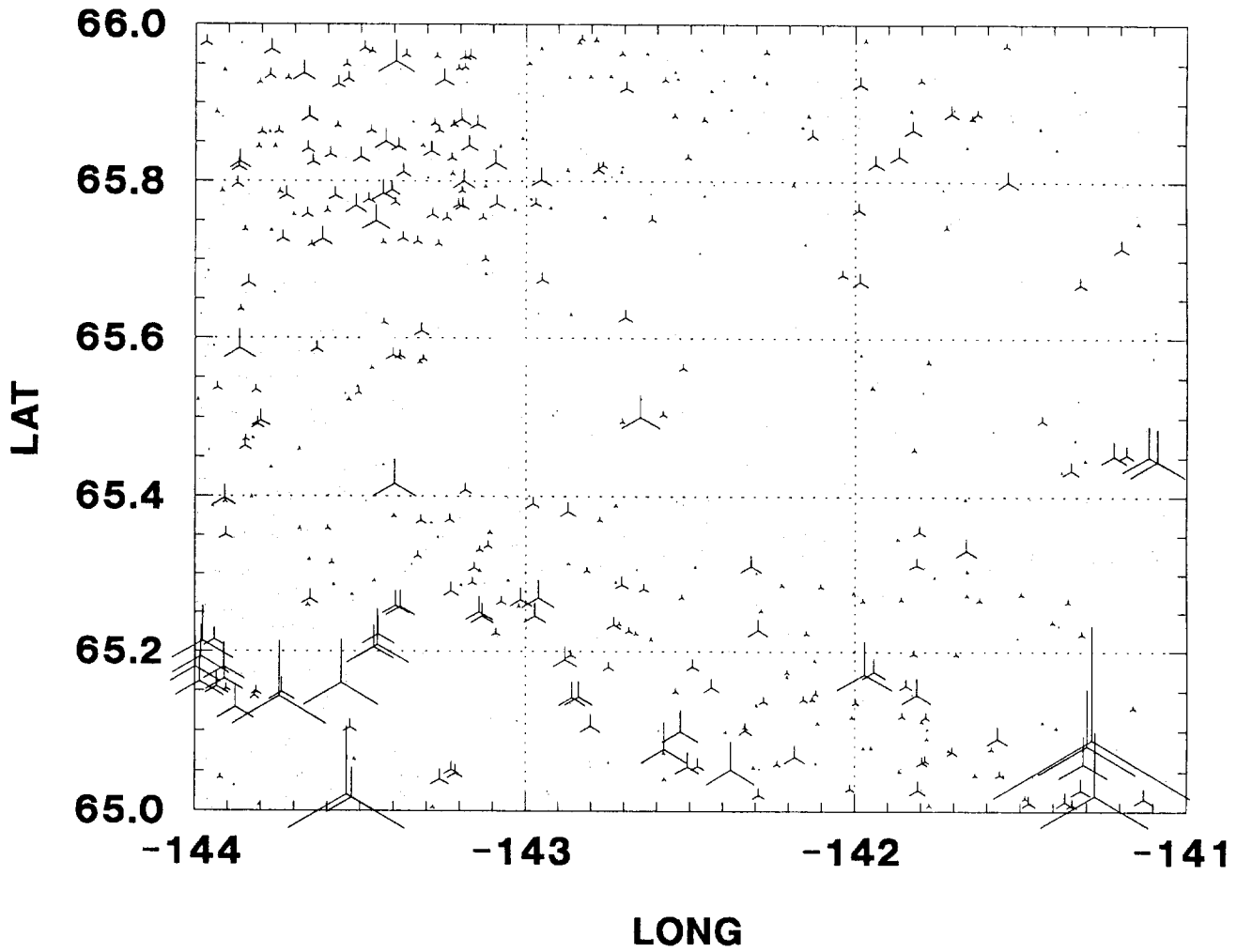
CHRZMAP NURE DATA FOR AS



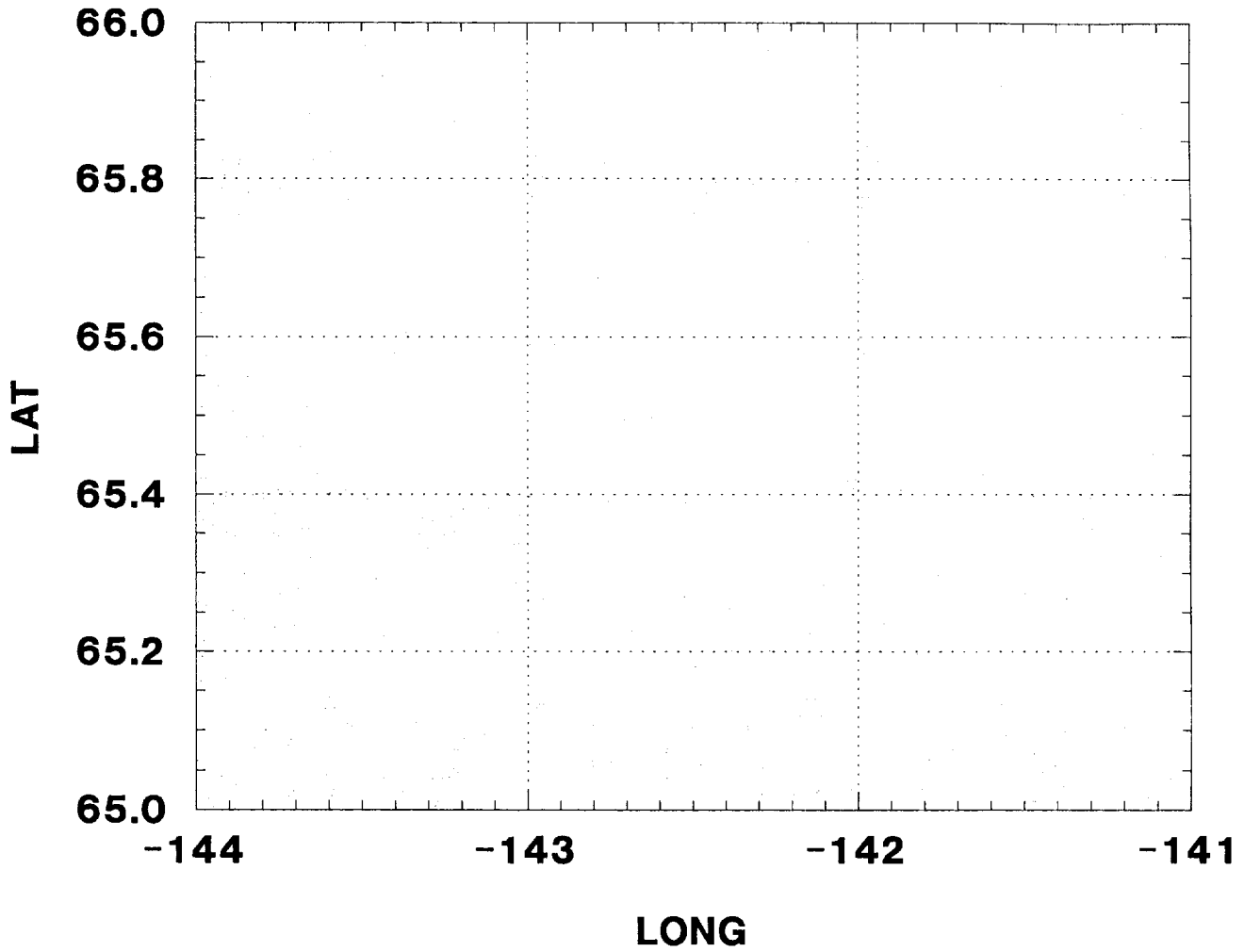
CHRMZMAP NURE DATA FOR AU



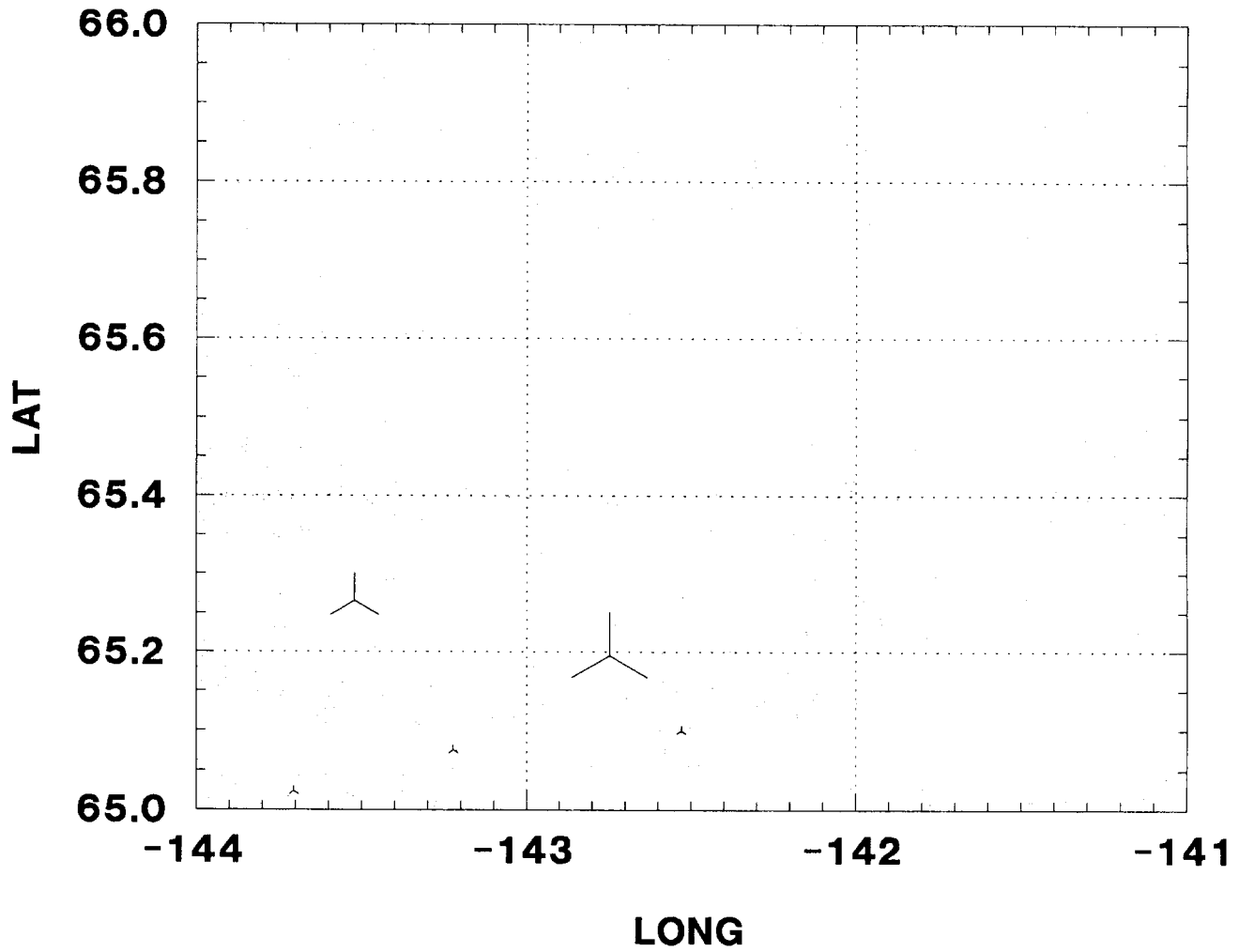
CHRMZMAP NURE DATA FOR BA



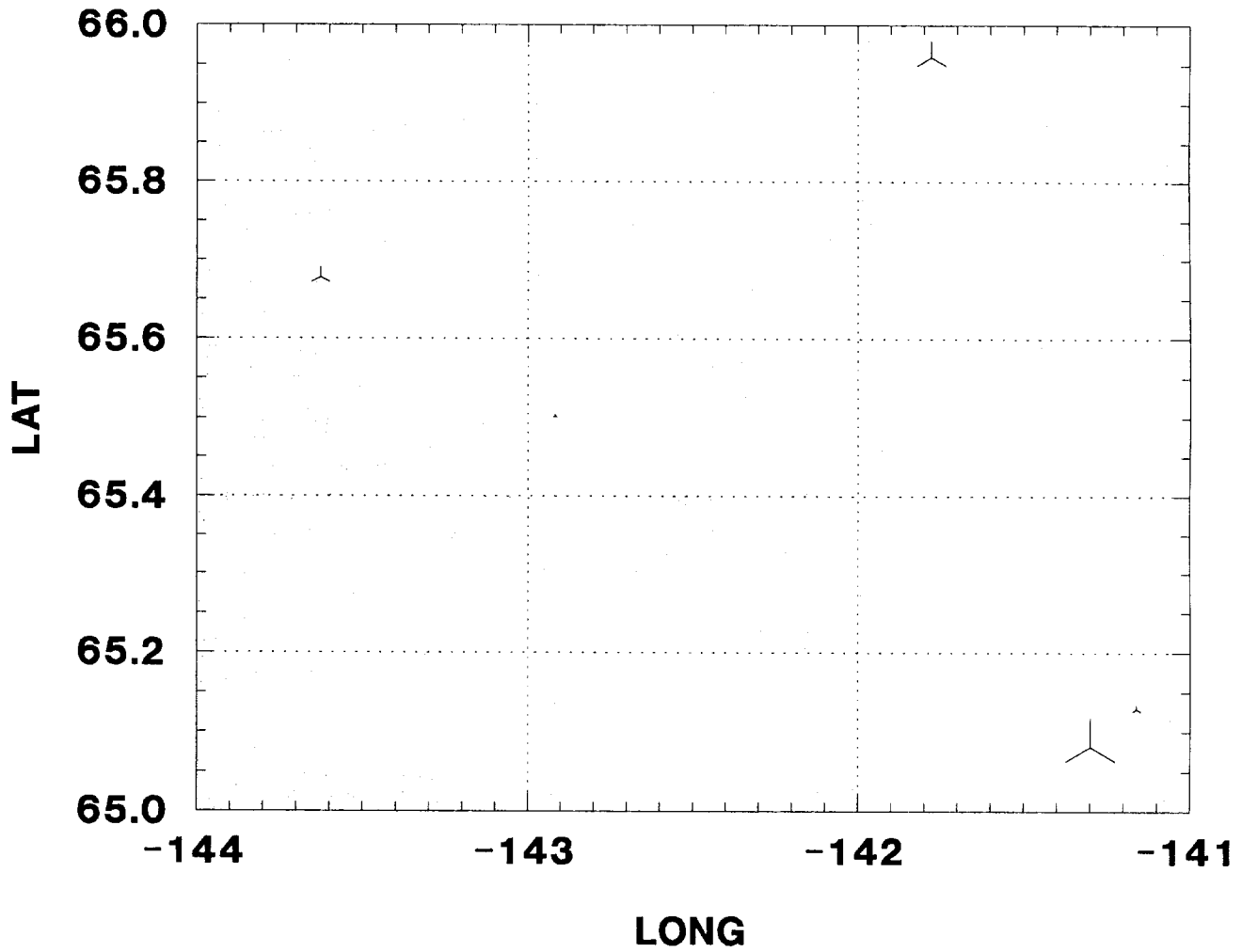
CHRZMAP NURE DATA FOR BE



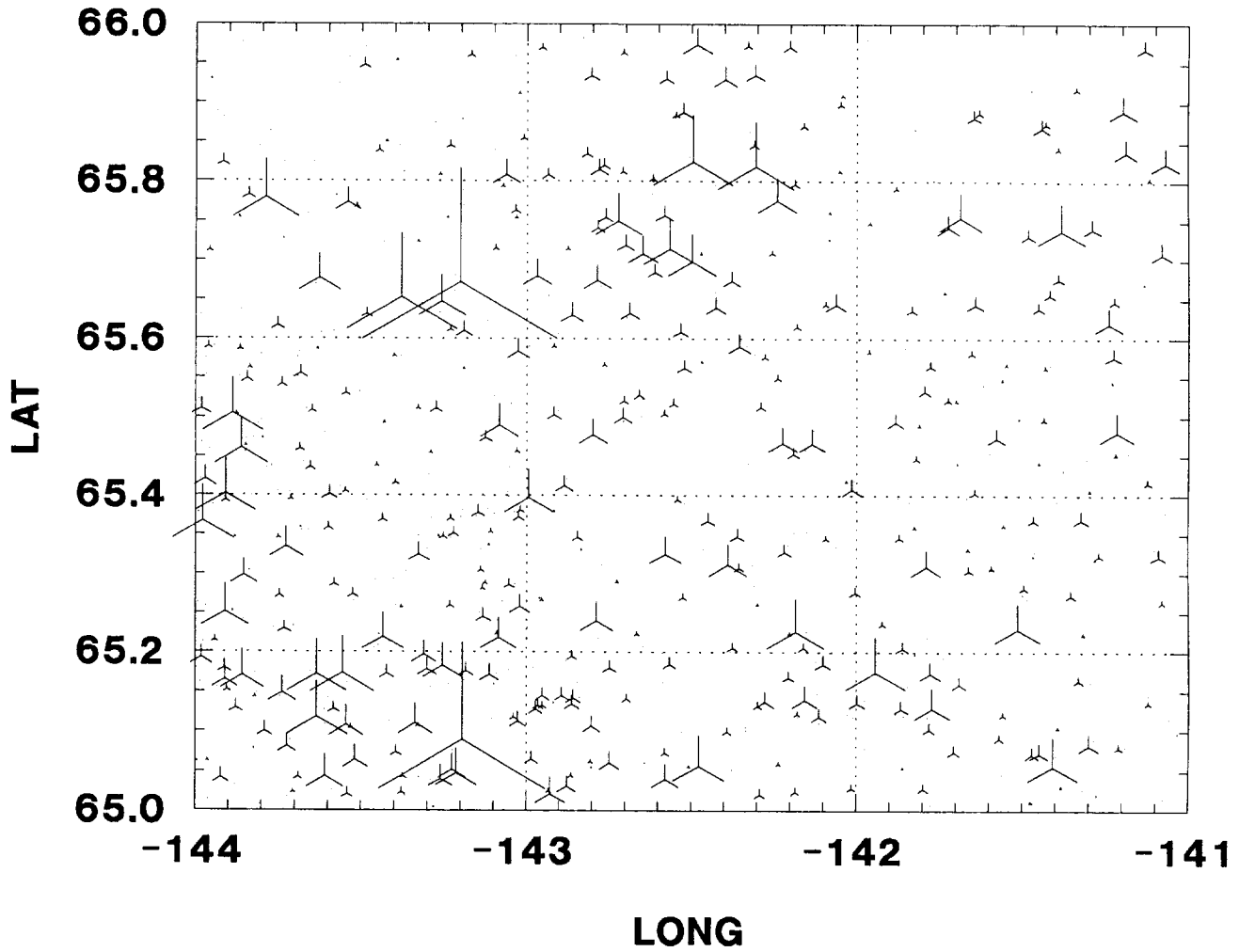
CHRMZMAP NURE DATA FOR BI



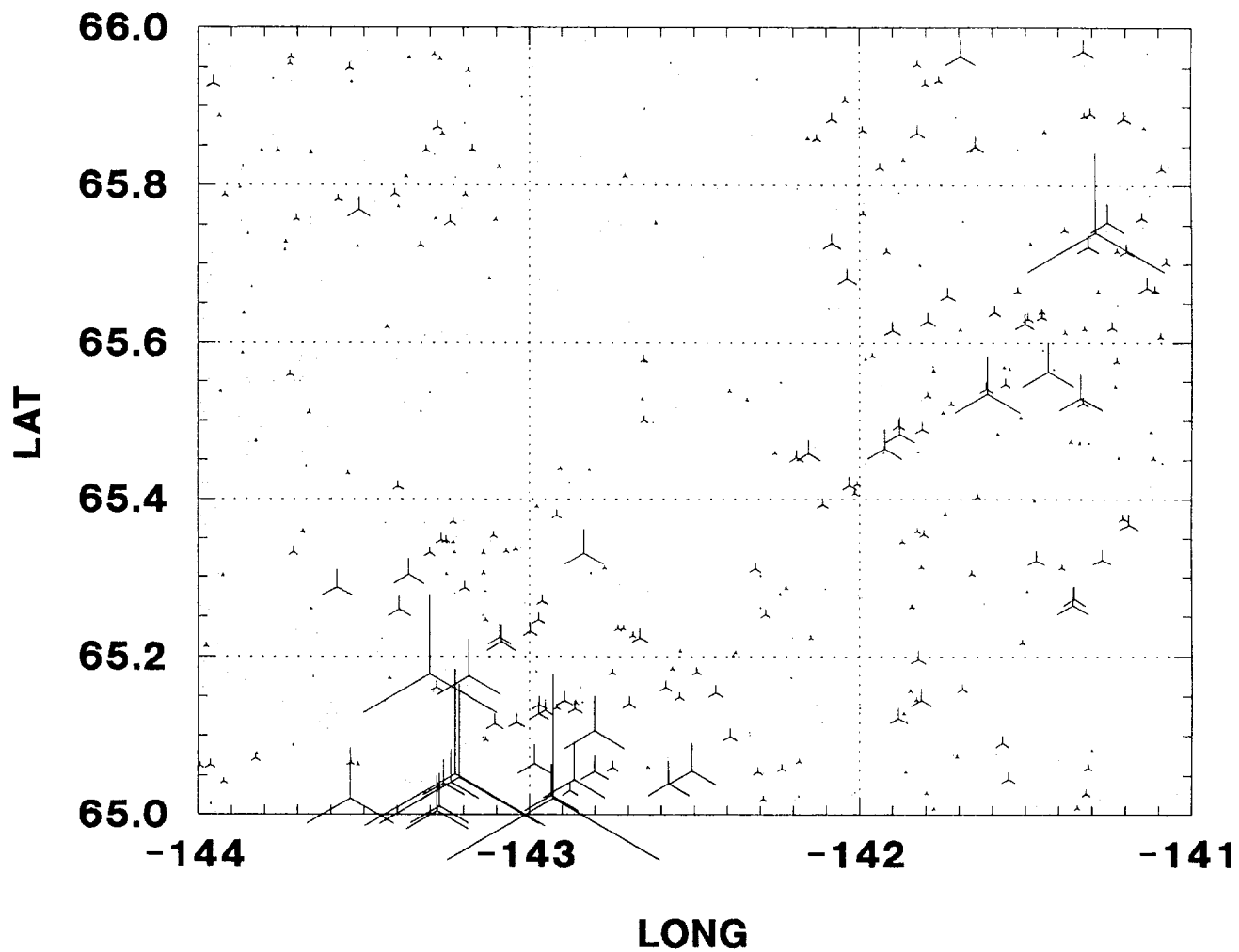
CHRZMAP NURE DATA FOR CD



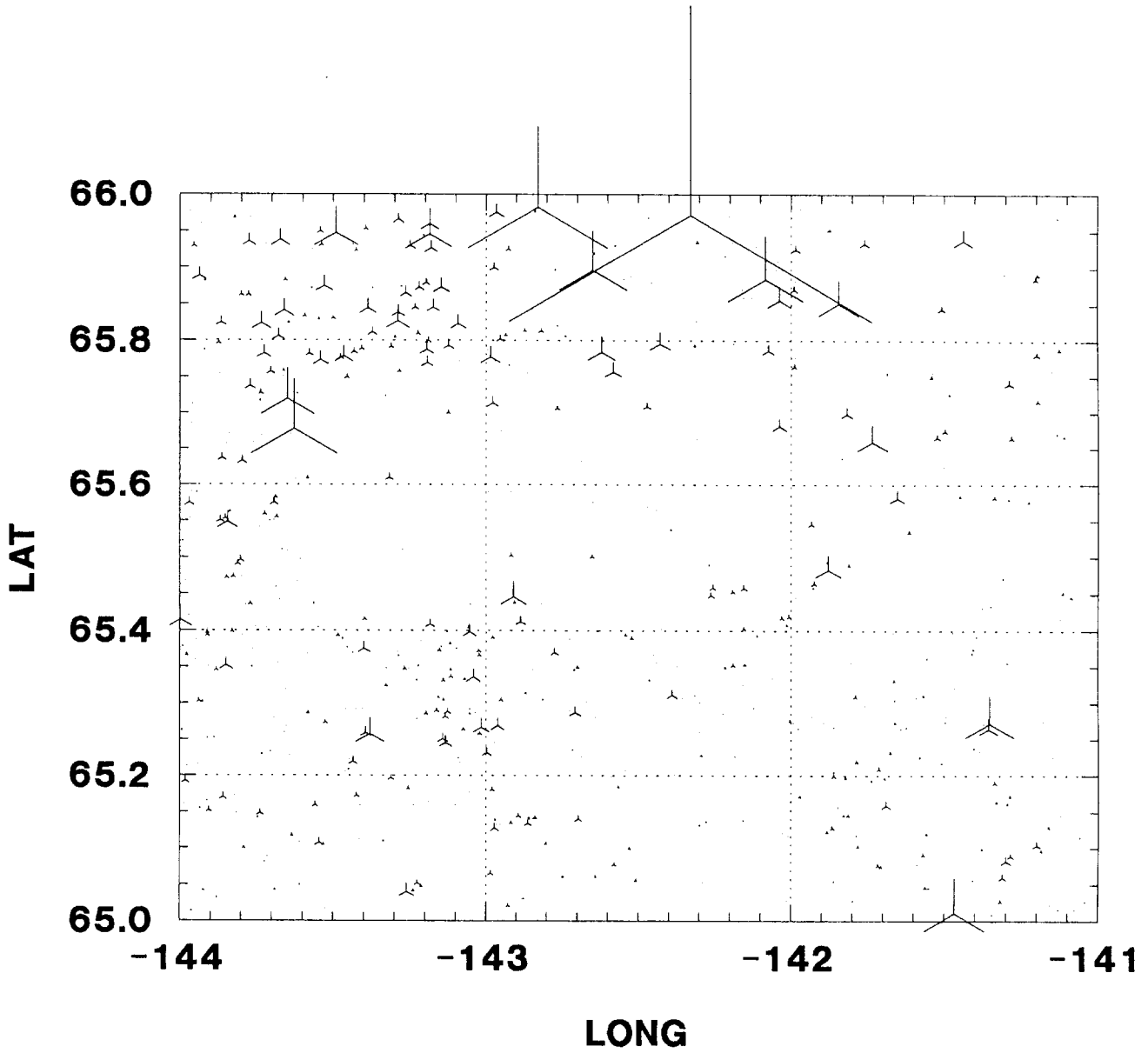
CHRZMAP NURE DATA FOR CO



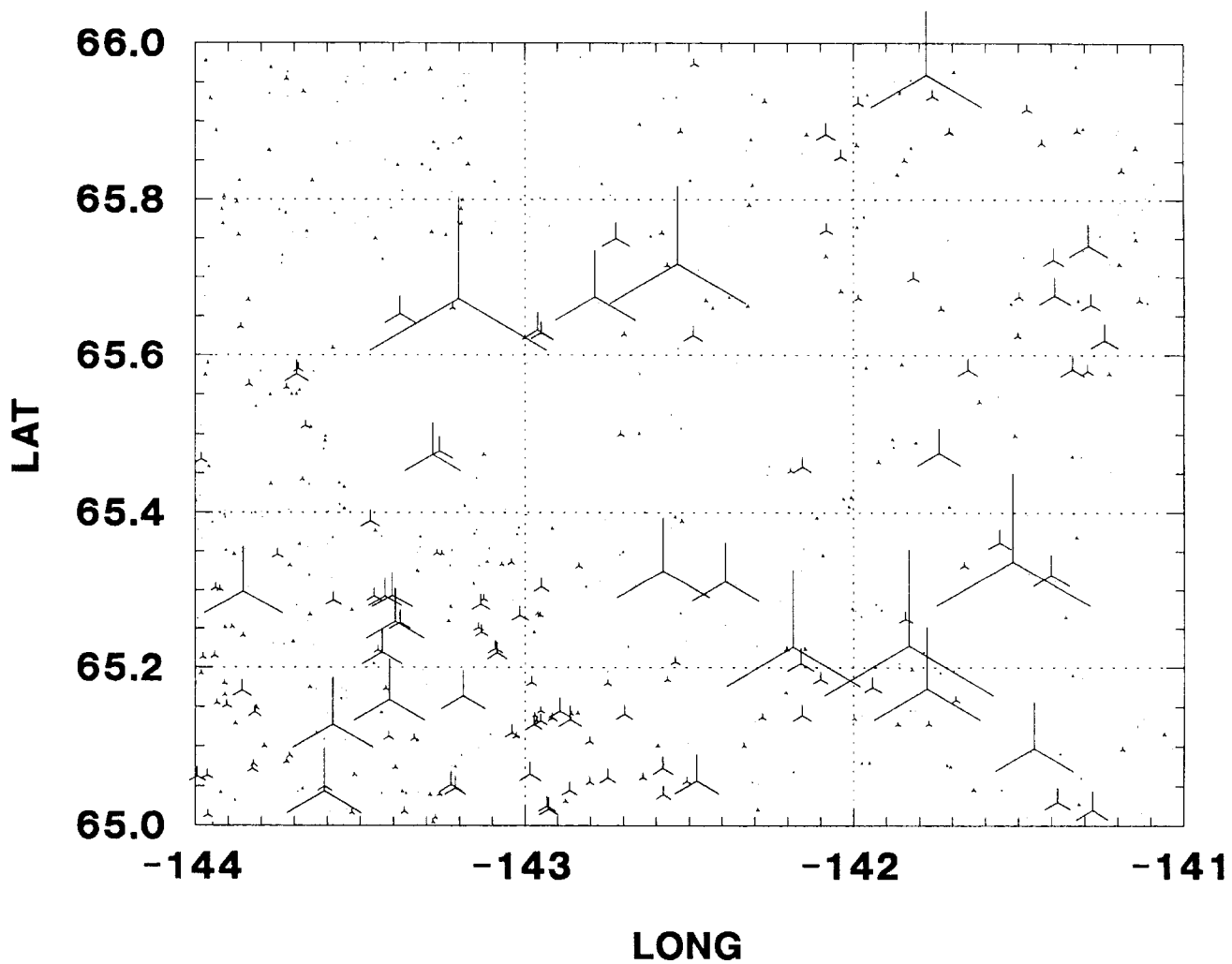
CHRZMAP NURE DATA FOR CR



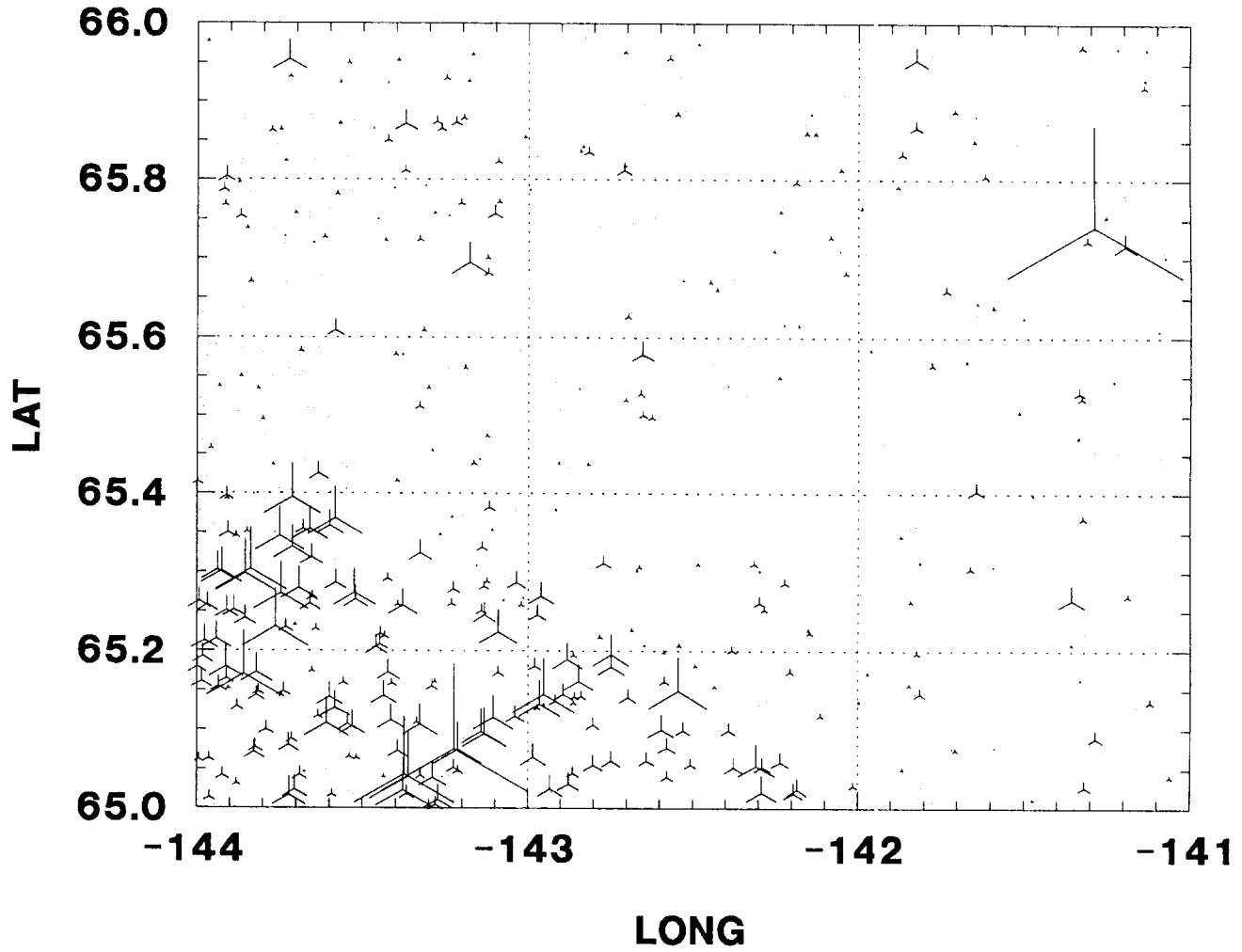
CHRZMAP NURE DATA FOR CU



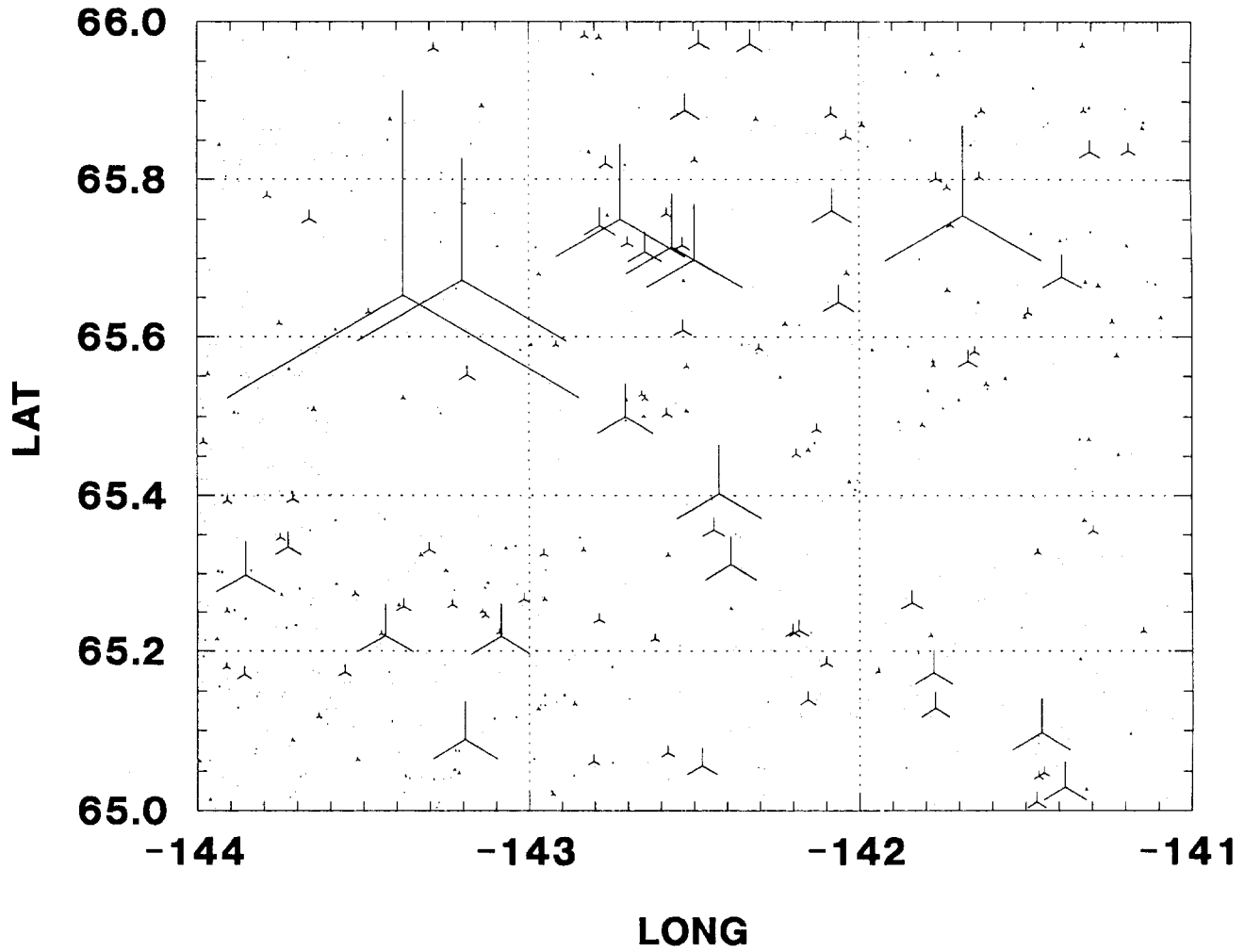
CHRZMAP NURE DATA FOR FE



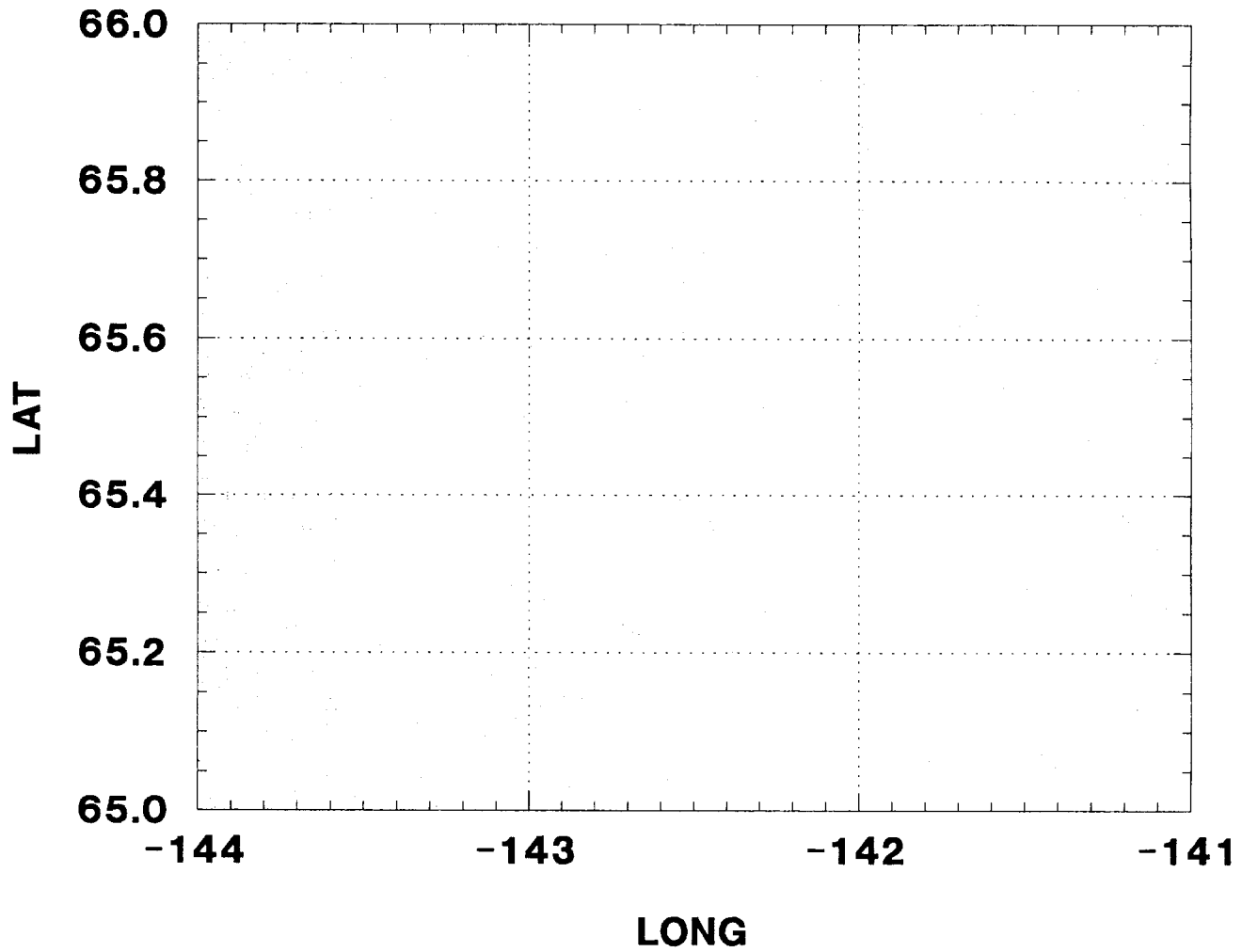
CHRMZMAP NURE DATA FOR LA



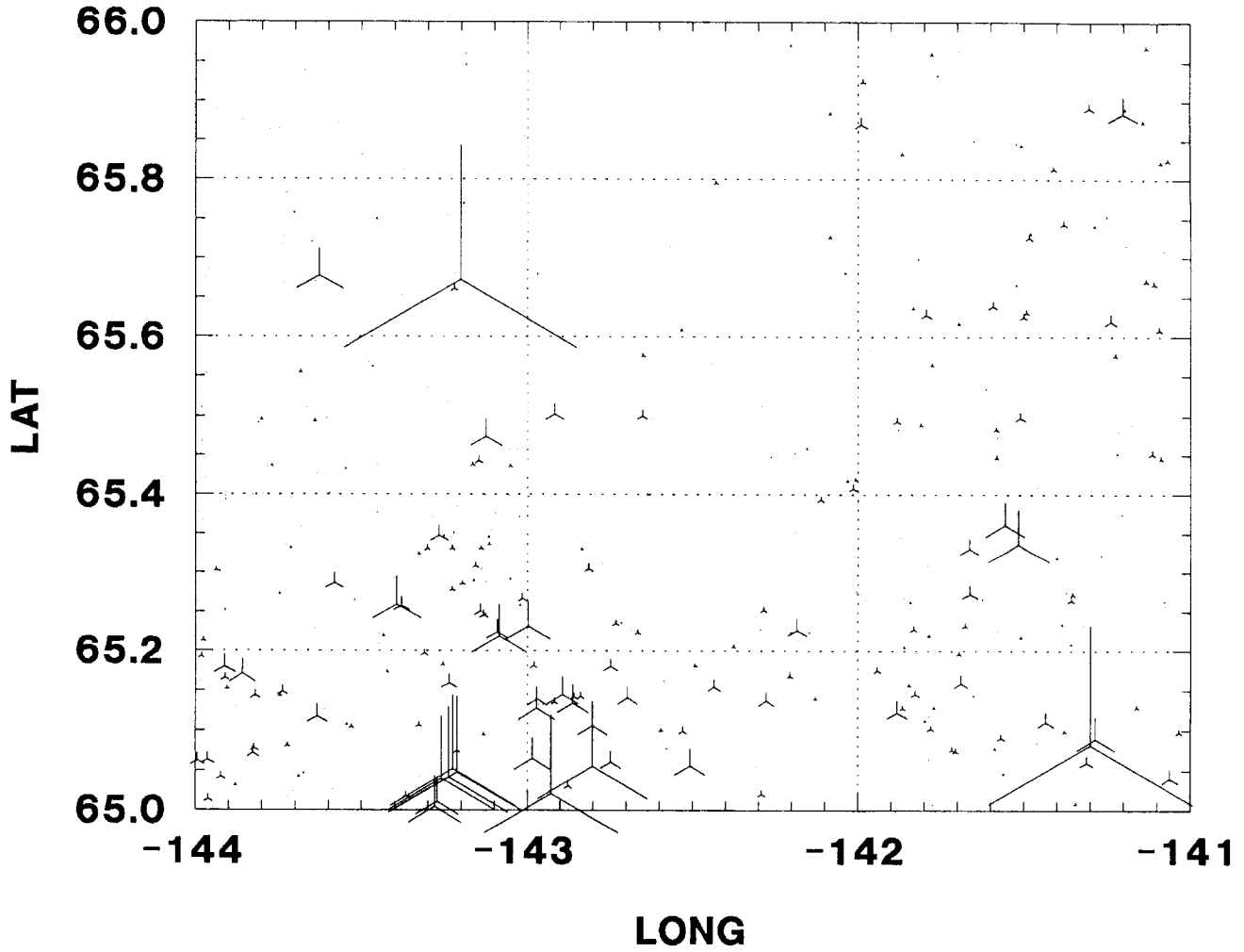
CHRMZMAP NURE DATA FOR MN



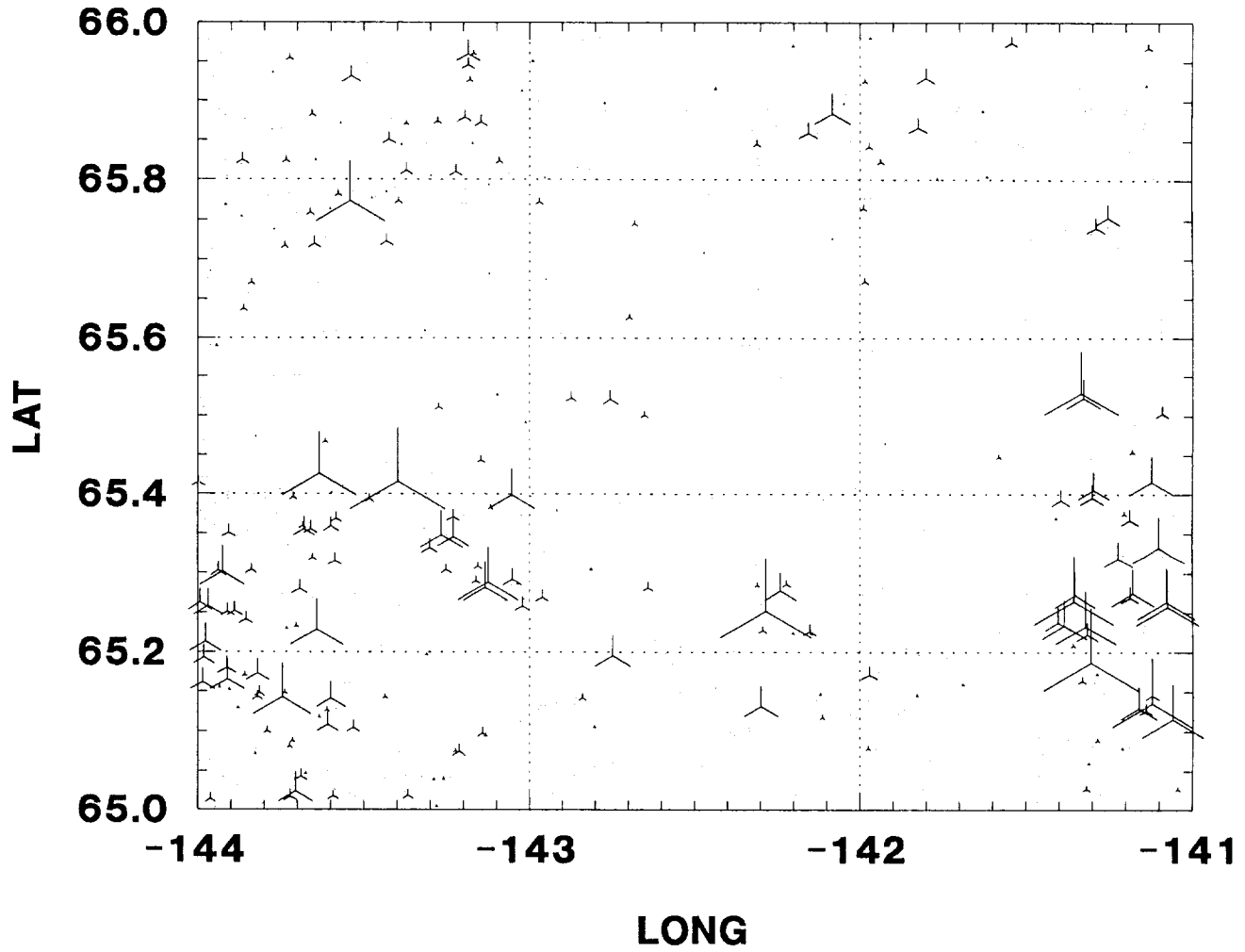
CHRZMAP NURE DATA FOR MO



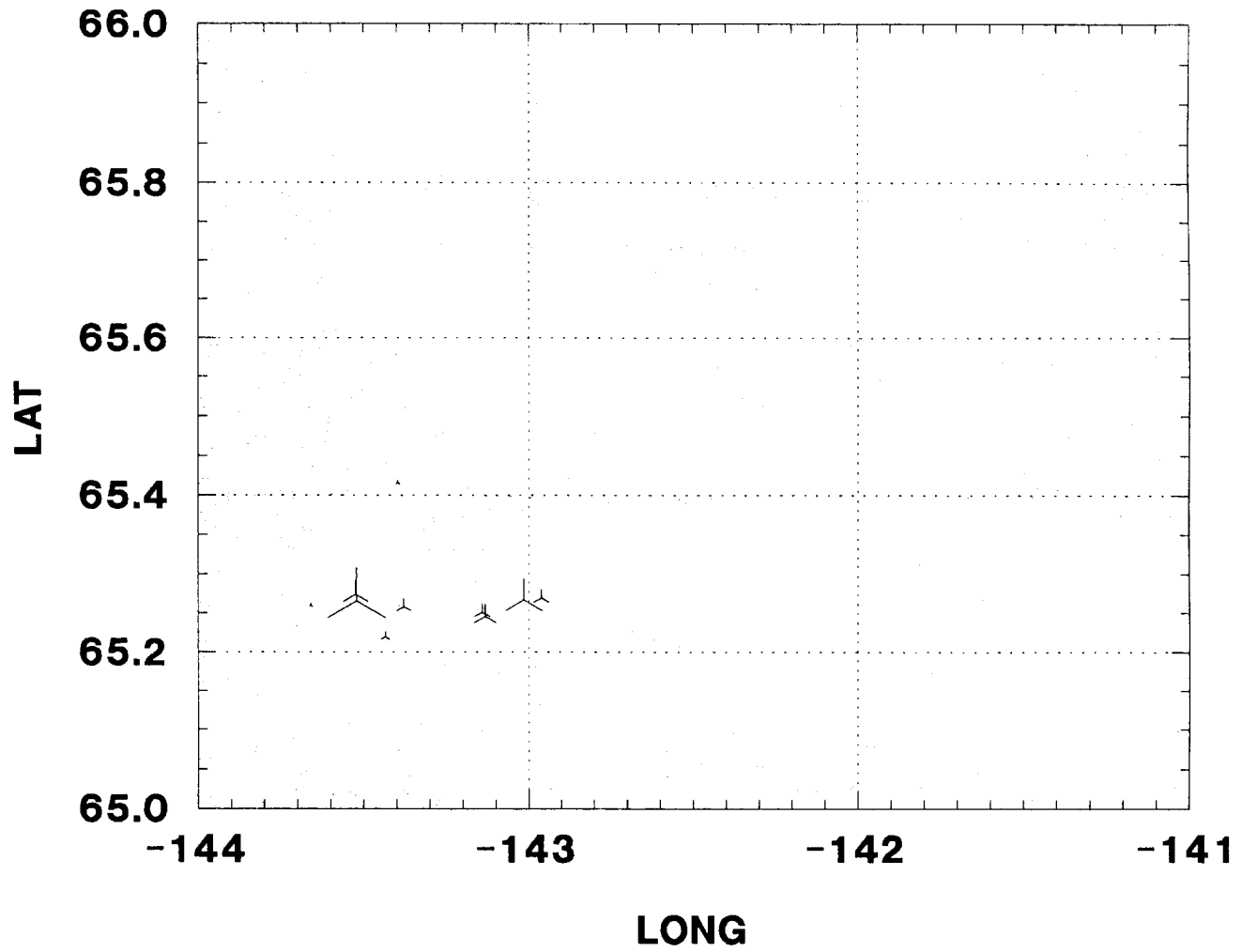
CHRMZMAP NURE DATA FOR NI



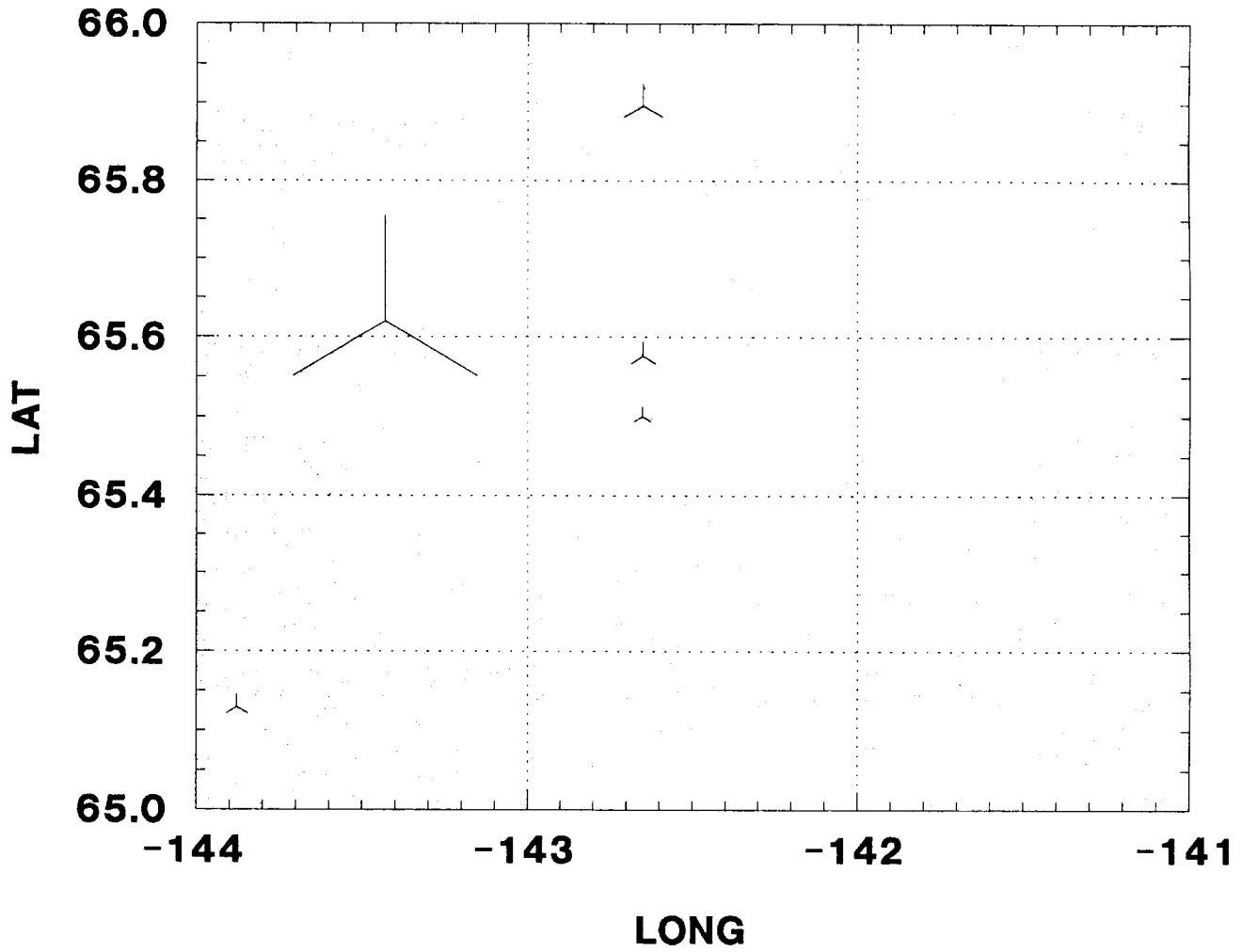
CHRZMAP NURE DATA FOR PB



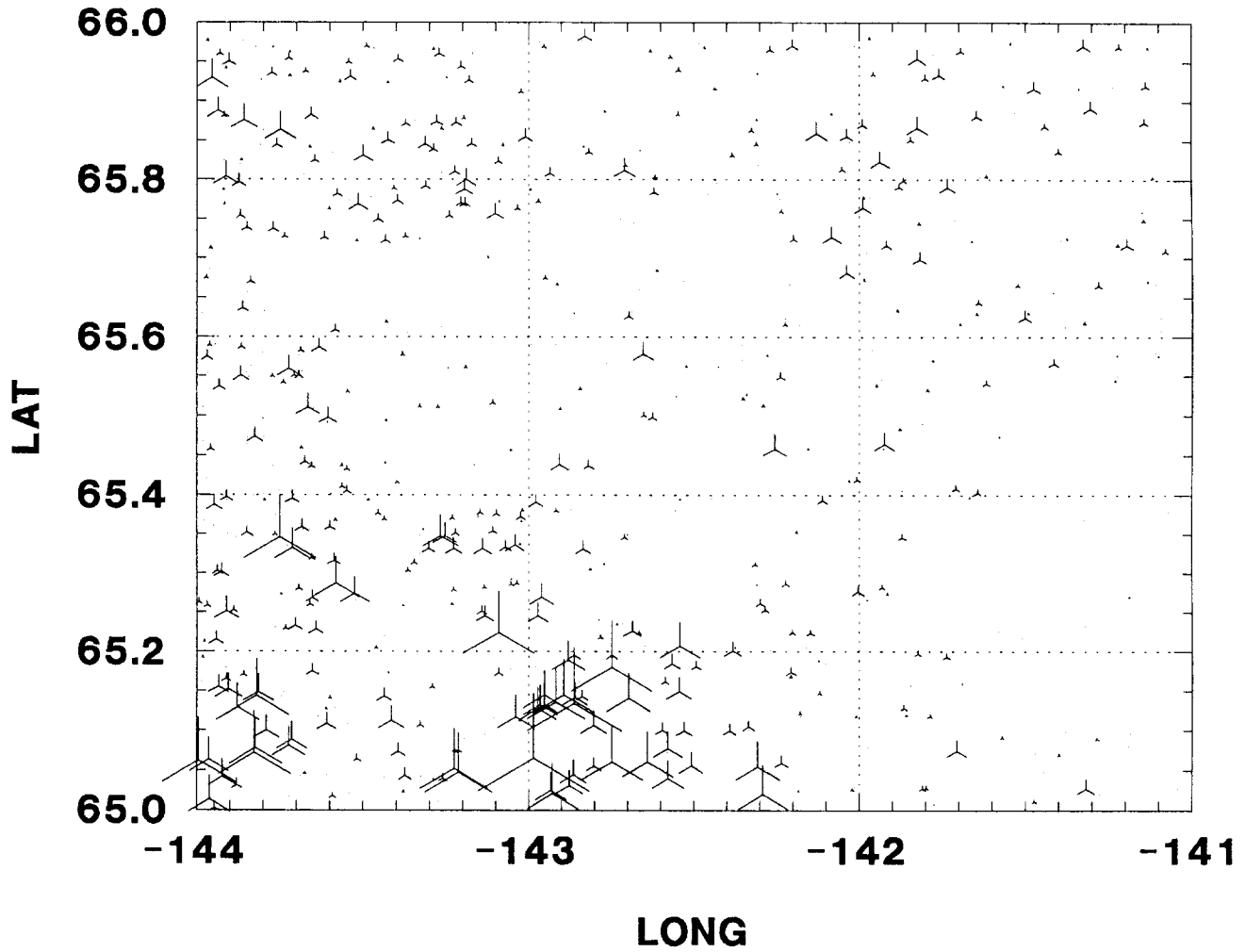
CHRZMAP NURE DATA FOR SB



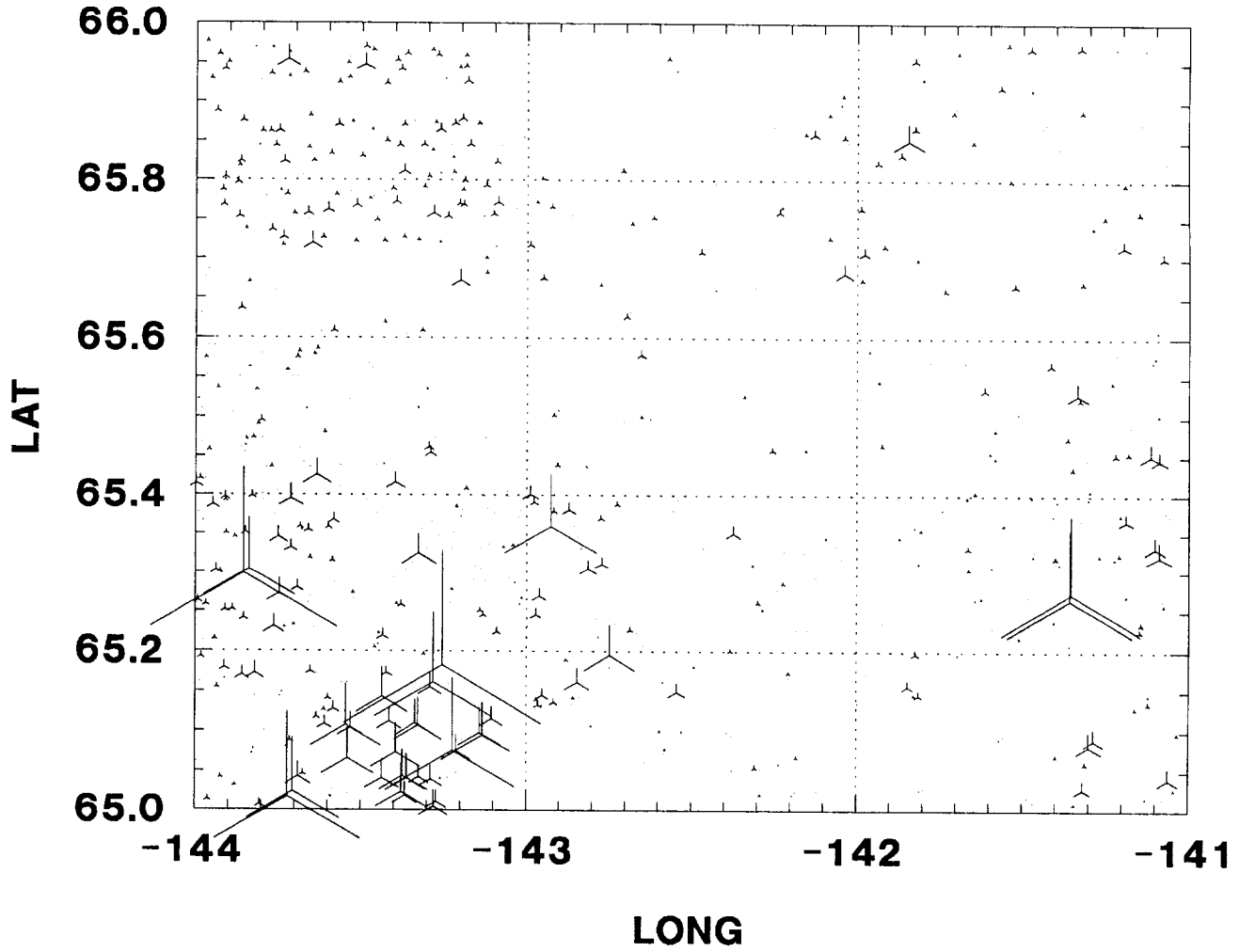
CHRZMAP NURE DATA FOR SN



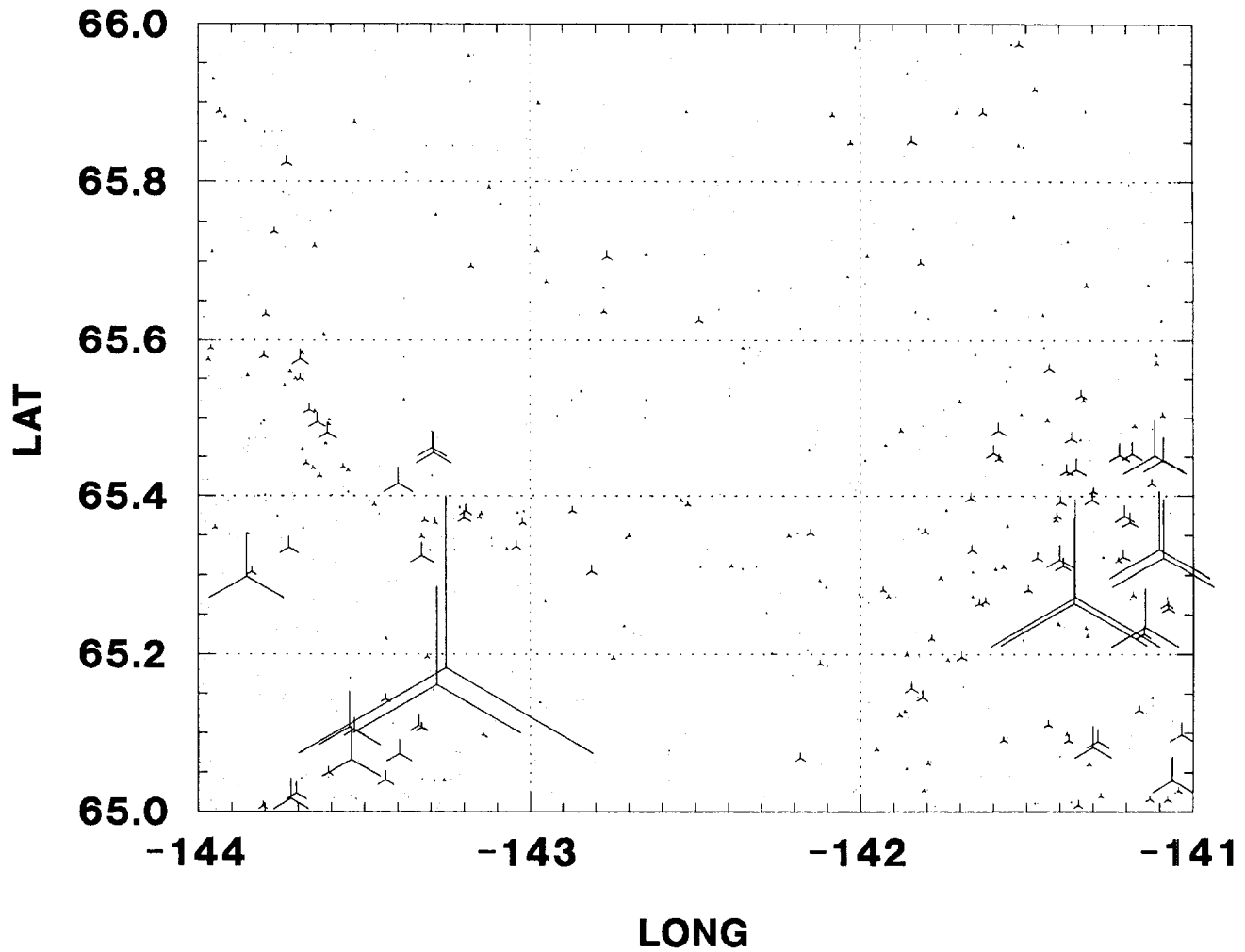
CHRZMAP NURE DATA FOR TI



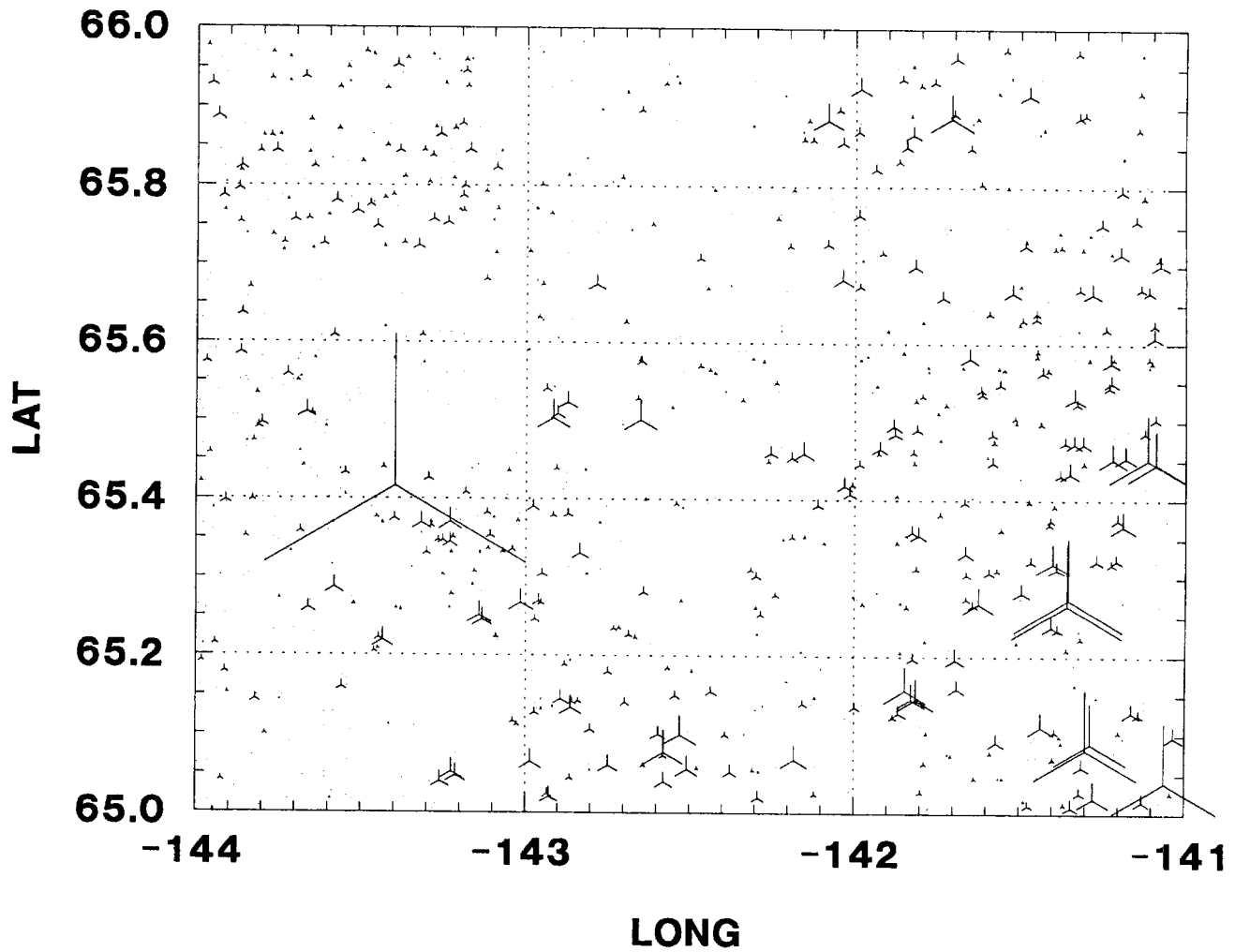
CHRZMAP NURE DATA FOR U



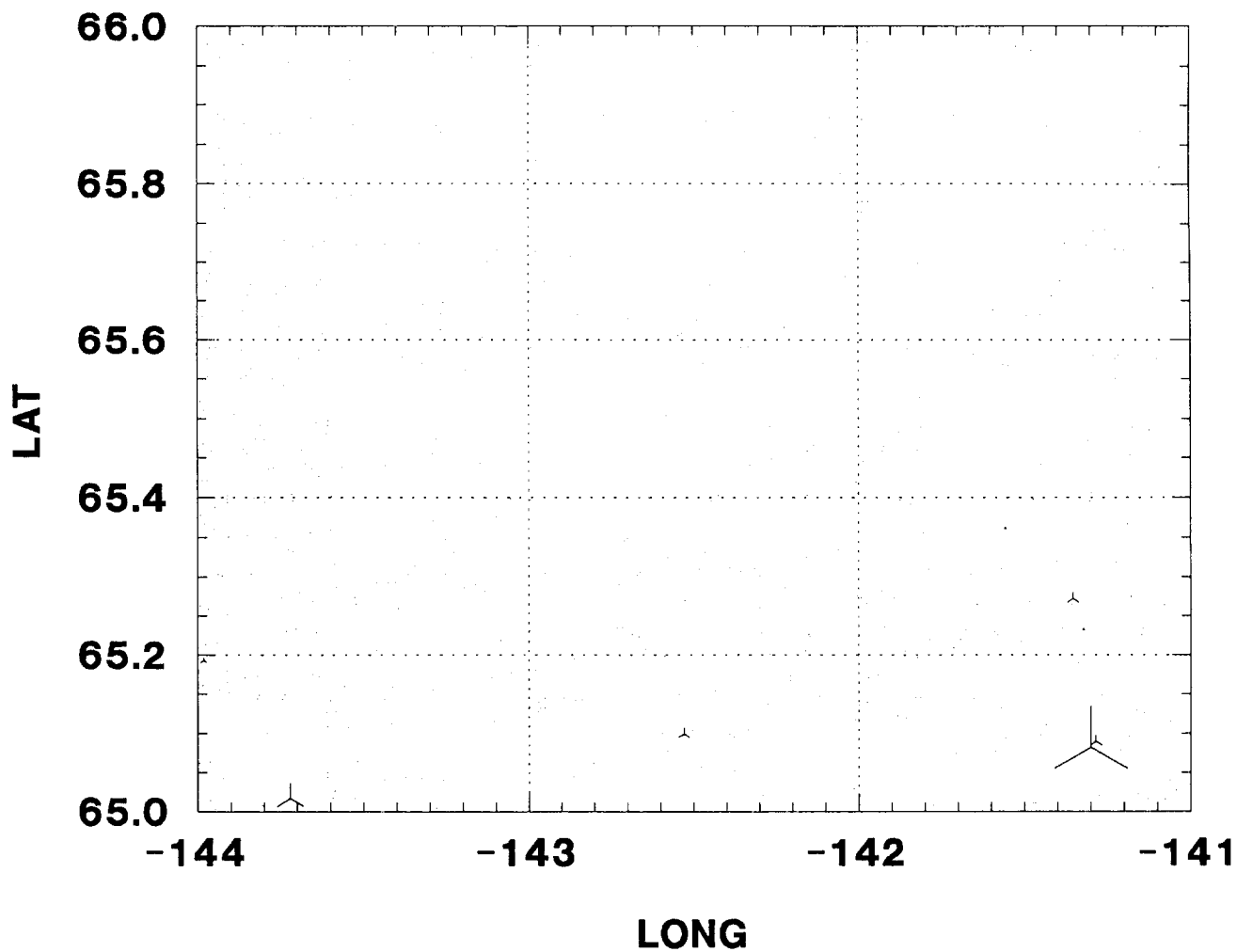
CHRZMAP NURE DATA FOR UTH



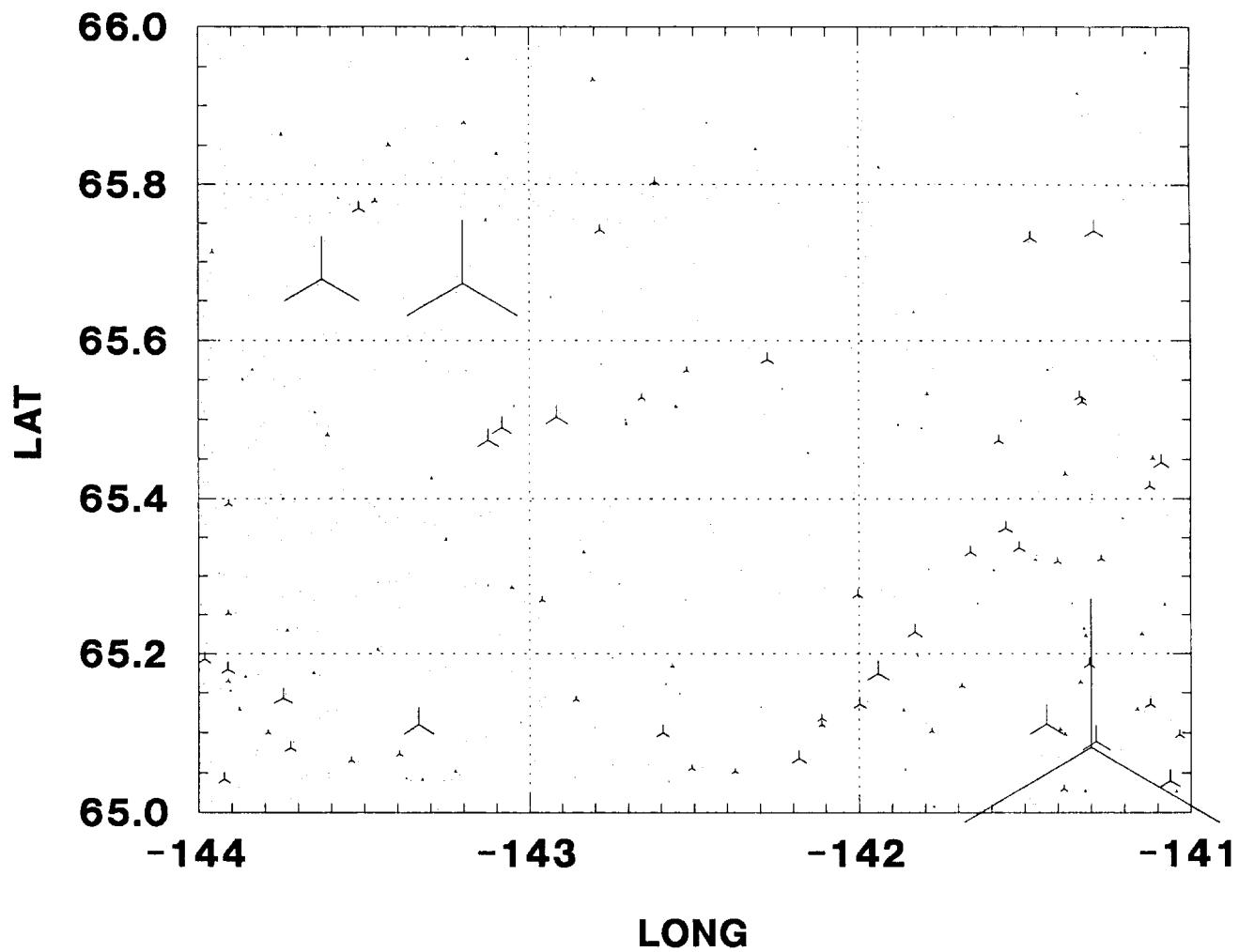
CHRZMAP NURE DATA FOR V



CHRZMAP NURE DATA FOR W



CHRZMAP NURE DATA FOR ZN



APPENDIX A

KEY TO SAMPLE TYPES

This numerical key provides the necessary tie between the specific type or form of each sample taken and each individual suite of field and laboratory data to which the sample relates. It defines the various sample types collected by the LASL in the DOE HSSR for uranium.

The two-digit key number assigned to each sample type designates three distinct properties of the samples taken. These properties are: (a) The general sample source (spring, stream, dry stream, etc.); (b) The sample medium (water or sediment); and (c) The treatment given the sample in the field or laboratory prior to its analysis by the LASL.

The key numbers are inserted in the sample type columns of the specially formatted DOE sample numbering system to positively identify the sample type for all LASL sample data submitted.

<u>KEY NO.</u>	<u>SOURCE / MEDIUM / TREATMENT</u>
01	- <u>Spring water</u> sample <u>untreated</u> .
02	- <u>Stream water</u> sample <u>untreated</u> .
03	- <u>Well water</u> sample <u>untreated</u> .
04	- <u>Natural pond water</u> sample <u>untreated</u> .
05	- <u>Artificial pond water</u> sample <u>untreated</u> .
06	- <u>Spring water</u> sample <u>filtered</u> through a 0.45- μ membrane filter <u>and acidified</u> to a pH of <u><1</u> with reagent-grade nitric acid (HNO_3).
07	- <u>Stream water</u> sample <u>filtered</u> through a 0.45- μ membrane filter <u>and acidified</u> to a pH of <u><1</u> with reagent-grade nitric acid (HNO_3).
08	- <u>Well water</u> sample <u>filtered</u> through a 0.45- μ membrane filter <u>and acidified</u> to a pH of <u><1</u> with reagent-grade nitric acid (HNO_3).
09	- <u>Natural pond water</u> sample <u>filtered</u> through a 0.45- μ membrane filter <u>and acidified</u> to a pH of <u><1</u> with reagent-grade nitric acid (HNO_3).
10	- <u>Artificial pond water</u> sample <u>filtered</u> through a 0.45- μ membrane filter <u>and acidified</u> to a pH of <u><1</u> with reagent-grade nitric acid (HNO_3).
11	- <u>Wet spring sediment</u> sample <u>dried</u> at <u><100°C</u> and <u>sieved to -100 mesh</u> through stainless steel sieves.
12	- <u>Wet stream sediment</u> sample <u>dried</u> at <u><100°C</u> <u>and sieved to -100 mesh</u> through stainless steel sieves.
13	- <u>Wet natural pond sediment</u> sample <u>dried</u> at <u><100°C</u> <u>and sieved to -100 mesh</u> through stainless steel sieves.

- 14 - Wet artificial pond sediment sample dried at $\leq 100^{\circ}\text{C}$ and sieved to -100 mesh through stainless steel sieves.
- 15 - Dry stream sediment sample dried at $\leq 100^{\circ}\text{C}$ (if necessary) and sieved to -100 mesh through stainless steel sieves.
- 26 - Spring water sample acidified to a pH of ≤ 1 with reagent-grade nitric acid (HNO_3).
- 27 - Stream water sample acidified to a pH of ≤ 1 with reagent-grade nitric acid (HNO_3).
- 29 - Natural pond or lake water sample acidified to a pH of ≤ 1 with reagent-grade nitric acid (HNO_3).
- 31- Wet spring sediment sample dried at $\leq 100^{\circ}\text{C}$ and sieved to -40 mesh through stainless steel sieves.
- 32- Wet stream sediment sample dried at $\leq 100^{\circ}\text{C}$ and sieved to -40 mesh through stainless steel sieves.
- 33- Wet natural lake sediment sample dried at $\leq 100^{\circ}\text{C}$ and sieved to -40 mesh through stainless steel sieves.
- 35- Dry stream sediment sample dried at $\leq 100^{\circ}\text{C}$ and sieved to -40 mesh through stainless steel sieves.
- 41- Wet spring sediment sample dried at $\leq 100^{\circ}\text{C}$ and sieved to -80 mesh through stainless steel sieves.
- 42- Wet stream sediment sample dried at $\leq 100^{\circ}\text{C}$ and sieved to -80 mesh through stainless steel sieves.
- 43- Wet natural lake sediment sample dried at $\leq 100^{\circ}\text{C}$ and sieved to -80 mesh through stainless steel sieves.
- 45- Dry stream sediment sample dried at $\leq 100^{\circ}\text{C}$ and sieved to -80 mesh through stainless steel sieves.
- 51- Wet spring sediment sample dried at $\leq 100^{\circ}\text{C}$ and sieved to -170 mesh through stainless steel sieves.
- 52- Wet stream sediment sample dried at $\leq 100^{\circ}\text{C}$ and sieved to -170 mesh through stainless steel sieves.
- 53- Wet natural lake sediment sample dried at $\leq 100^{\circ}\text{C}$ and sieved to -170 mesh through stainless steel sieves.
- 55- Dry stream sediment sample dried at $\leq 100^{\circ}\text{C}$ and sieved to -170 mesh through stainless steel sieves.
- 61- Wet spring sediment sample dried at $\leq 100^{\circ}\text{C}$ and sieved to -230 mesh through stainless steel sieves.
- 62- Wet stream sediment sample dried at $\leq 100^{\circ}\text{C}$ and sieved to -230 mesh through stainless steel sieves.
- 63- Wet natural lake sediment sample dried at $\leq 100^{\circ}\text{C}$ and sieved to -230 mesh through stainless steel sieves.

- 65- Dry stream sediment sample dried at -100°C and sieved to -230 mesh through stainless steel sieves.
- 71- Sediment sample collected from the stream bank, dried at $\leq 100^{\circ}\text{C}$, and sieved to -40 mesh through stainless steel sieves.
- 72- Sediment sample collected from the stream bank, dried at $\leq 100^{\circ}\text{C}$, and sieved to -80 mesh through stainless steel sieves.
- 73- Sediment sample collected from the stream bank, dried at $\leq 100^{\circ}\text{C}$, and sieved to -100 mesh through stainless steel sieves.
- 74- Sediment sample collected from the stream bank, dried at $\leq 100^{\circ}\text{C}$, and sieved to -170 mesh through stainless steel sieves.
- 75- Sediment sample collected from the stream bank, dried at $\leq 100^{\circ}\text{C}$, and sieved to -230 mesh through stainless steel sieves.
- 96 - Dry natural pond sediment sample dried at $\leq 100^{\circ}\text{C}$ (if necessary) and sieved to -100 mesh through stainless steel sieves.
- 97 - Dry artificial pond sediment sample dried at $\leq 100^{\circ}\text{C}$ (if necessary) and sieved to -100 mesh through stainless steel sieves.
- 98 - Other water These key numbers are to be used only for water (98) or sediment (99) samples coming from a special source and/or given a special treatment not described for any of the types of samples above.
- 99 - Other sediment

PDF 91 - 22: ERRATA

ONE ELEMENT WAS OMITTED FROM LISTING OF
ELEMENTS ON DISK. THAT ELEMENT WAS
....SE.....IT SHOULD GO BETWEEN AS AND ZR.

CORRECT ORDER OF ELEMENTS ON FILE IS:

U AG BI CD CU NB NI PB SN
W AS SE ZR MO BE LI AL AU
BA CA CE CL CO CR CS DY EU
FE HF K LA LU MN MG NA RB
SB SC SM SR TA TB TH TI V
YB ZN and U/TH

PDF 91-22 - UPDATE

The section of PDF 91-22 which describes the format of the NURE data as it is available on computer disk has changed. Instead of all data on one file/quadrangle in columnar format separated by blanks, it is now split into 3 files/quadrangle with commas and blanks separating the fields. The new files are named "NXXX#.ASC". N is for NURE data, XXX is the 3 character quadrangle identification, and # is 1, 2, or 3. This new version will make it easier for users to input the data directly into Quatro-Pro, Lotus, or other spread sheets with a 250 character limit on record length. In Quatro-Pro use IMPORT option, ASCII file, QUOTE & COMMA delimited. Two records were added in front of the data:

- 1.) a header record which says
"Part <n>, Quadrangle: <name>"
- 2.) a record with column headings so users can tell which elements are in the file and the order. The column headings are comma and blank delimited too. The data is still in ASCII format and the commas can be eliminated by using a variety of text editors.

Following are the formats of the 3 files. Column 1 was left blank for all records so that all data in the files could be printed even when the first item is interpreted as a carriage control character.

FILE 1:

Record 1: 55 Characters of text. - starts col 2 and length depends on length of quadrangle name. It is enclosed in quotes.

Record 2: col 2-39

"Samp-Id","RC", "Lat.", "Long.", "ST" (Sample Type--see main text)

Starting in col 40, 14 groups of: , "Xx" which are the elements names for the columns. For this record they are: U, Ag, Bi, Cd, Cu, Nb, Ni, Pb, Sn, W, As, Se, Zr, and Mo. NOTE: There is NOT a comma after the last item and all items are enclosed in quotes.

Record 3 to end:

col 2-8. 7 digit sample number.

col 9-10 ", " - a comma followed by a blank

col 11-13 replicate code - 3 digits allowed, most values will be 0 or 1 digit.

col 14-24 ", " followed by Latitude in decimal degrees with 5 decimal places

col 25-35 ", " followed by Longitude in decimal degrees with 5 decimal places

col 36-39 ", " followed by 2 digit sample type

Starting in col 40, 17 groups of "," (comma) followed by 8 digit value of element in ppm.

Decimal point is present. None of the values require all 8 digits so that leaves a blank space after the comma. NOTE: no comma after the last item.

FILE 2:

Record 1: - Same as for file 1

Record 2: col 2 to 8 - "Samp-Id"

Starting in col 9, 17 groups of: , "Xx", which are element names for the columns. For this file they are: Be, Li, Al, Au, Ba, Ca, Ce, Cl, Co, Cr, Cs, Dy, Eu, Fe, Hf, K, and La. NOTE: no comma at end and items enclosed in quotes.

Record 3 to end:

Col 2-8 7 digit sample number.

Starting in col 9, 17 groups of ",", followed by 8 digit value of element. As in File 1.

FILE 3: Same format as file 2 with different elements. The elements are: Lu, Mn, Mg, Na, Rb, Sb, Sc, Sm, Sr, Ta, Tb, Th, Ti, V, Yb, Zn, and U/Th

NOTE: In the original listing of the elements, Se was accidently left out. It goes between As and Zr.

A copy of this file is included on disk. It is labeled README.NUR. If there are any problems reading this data contact Shirley Liss at DGGS. (907) - 474 - 7147.