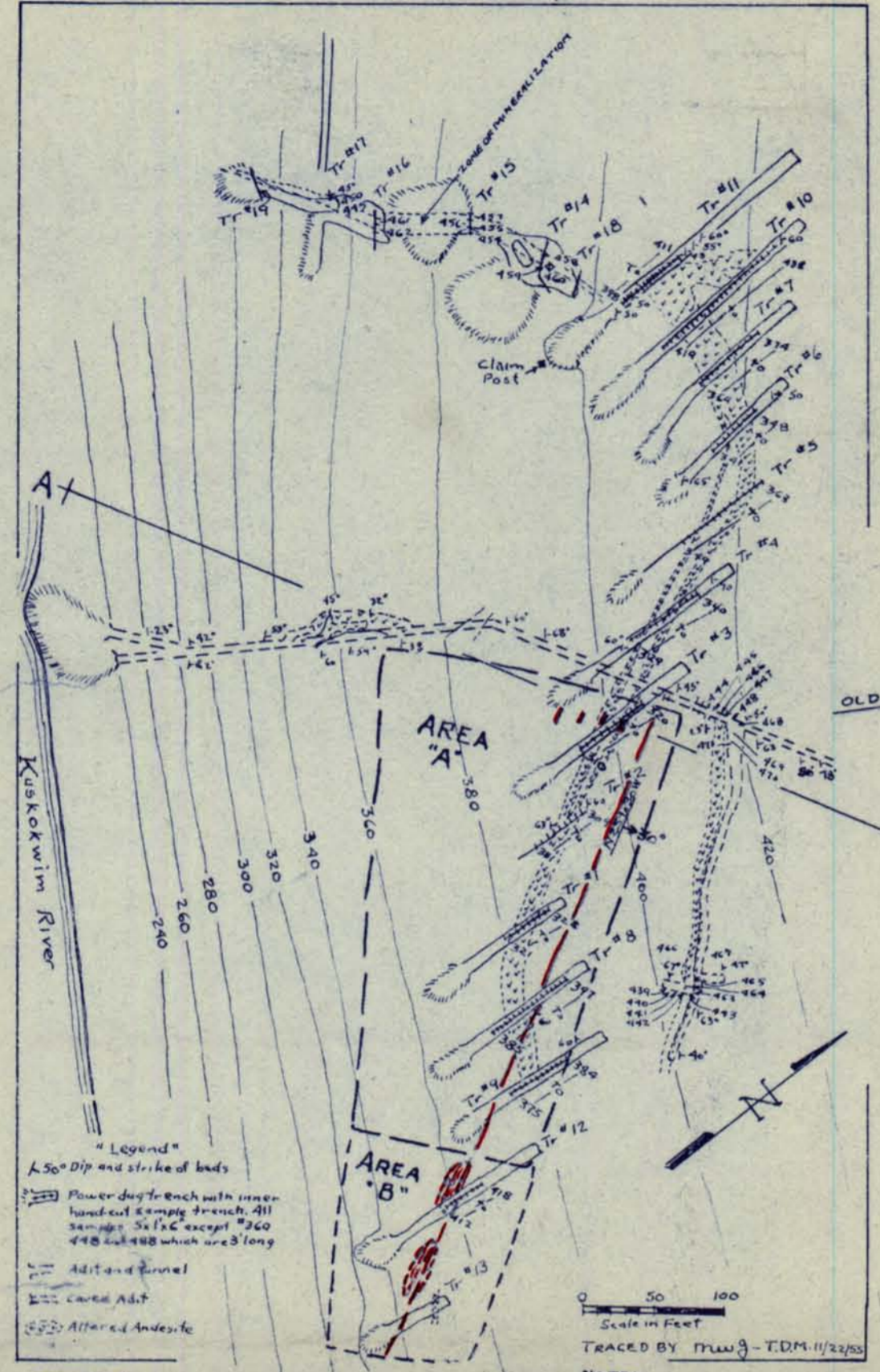


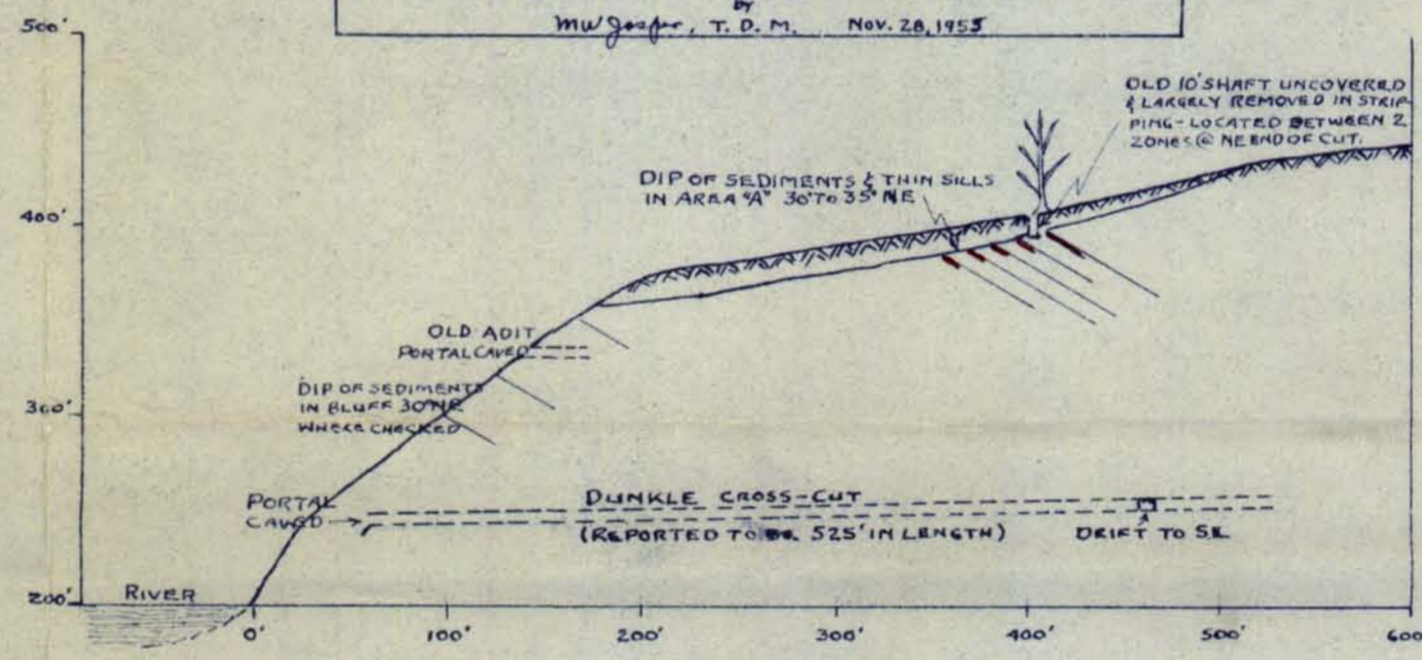
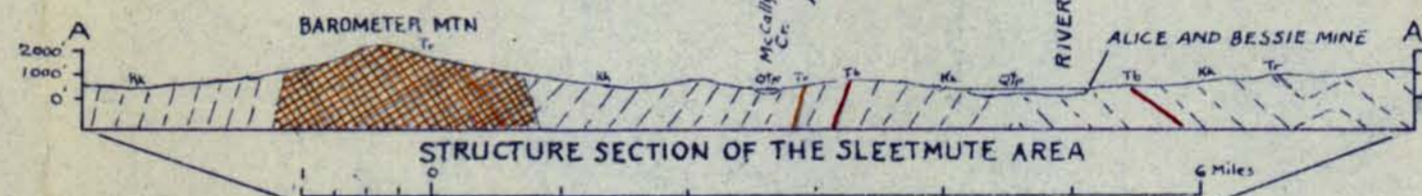
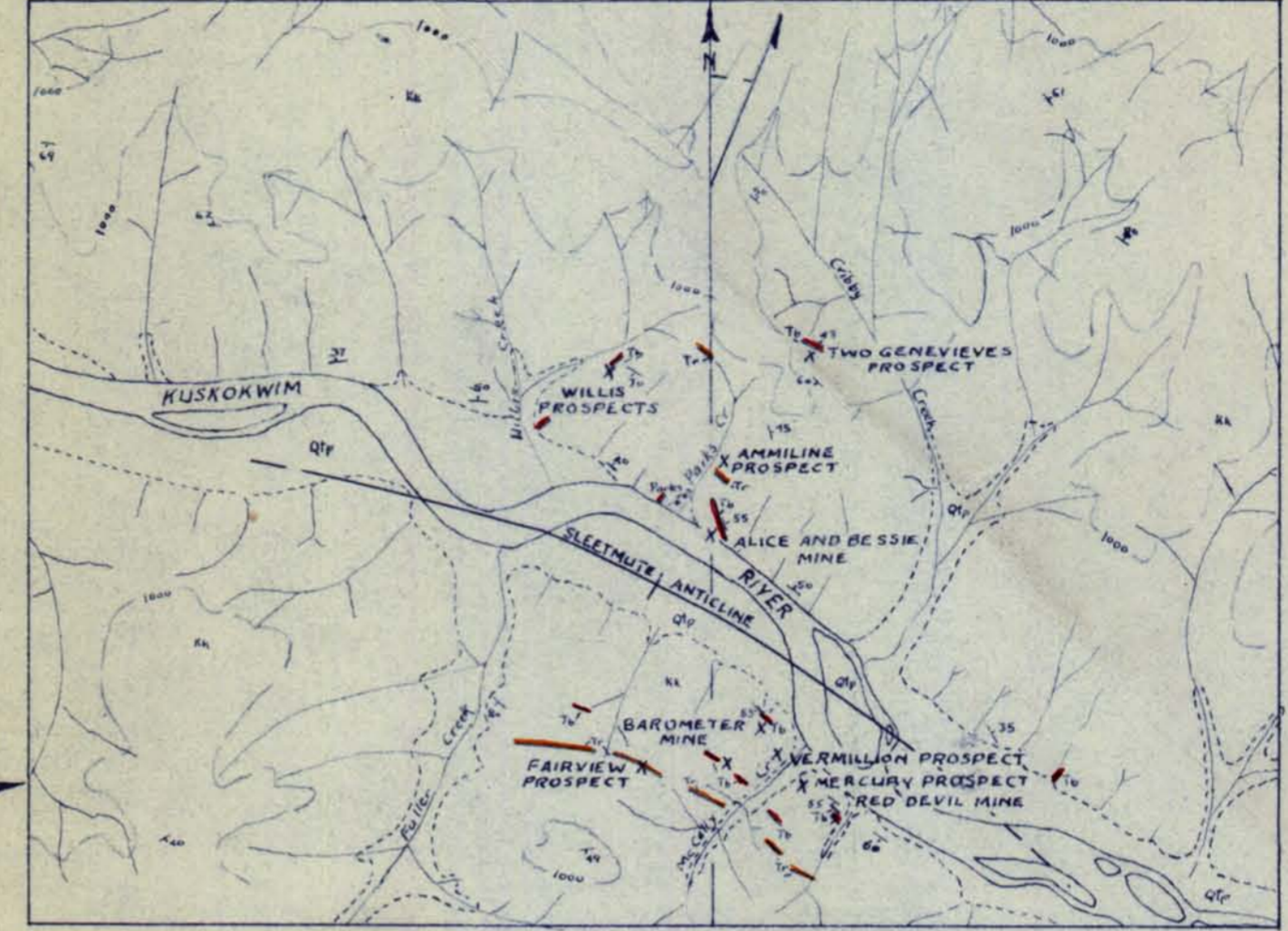
FIG. 7. ALICE & BESSIE MINE  
(FROM USBM R.I. 4065, Pg. 19)



AREAS "A" & "B" STRIPPED BY GEO. H. WILLIS IN SEPT-OCT. '55.  
 HGS MINERALIZED ZONES - NEW DISCOVERIES - SHOWN IN RED. THEIR AVERAGE HORIZONTAL WIDTHS ARE 4 TO 6'.  
 HGS IS ASSOCIATED WITH NARROW SILLS & HW SHALES.

NOTE:  
 CONTOURS SE OF USBM MAPPED AREA ARE APPROXIMATE ONLY.  
 AREAS "A" & "B" WERE TIED-IN BY FRM DRUMTON BEARINGS & ESTIMATED DISTANCES ONLY - THEIR LOCATION IS CONSIDERED APPROX. CORRECT.  
 DIP OF SEDIMENTS TAKEN AT NUMBERED POINTS IN BLUFF & AREA "A" AVERAGED 30° NE & STRIKE N25° W 30W.

APPROX. LOCATION (ON RIVER BANK) EST. 600' S.E. OF AREA "B" OF SHOWING (REPORTED BY R.F. LYMAN) FOUND IN OCT. '55, CONSIDERED BY OWNERS TO PROBABLY BE EXTENSION OF SAME. HGS ZONE EXPOSED BY SEPT-OCT '55 STRIPPING IN AREAS "A" & "B"



PLAN AND CROSS-SECTION  
 OF THE  
 OLD E. W. PARKS ALICE & BESSIE CINNABAR PROPERTY  
 (NOW HELD BY ROBT. F. LYMAN & GEO. H. WILLIS)  
 CENTRAL KUSKOKWIM REGION, SLEETSOLUTE QUAD  
 ALASKA  
 BY  
 M.W. J. T.D.M. MINING ENGINEER  
 TERRITORIAL DEPT. OF MINES  
 ANCHORAGE, ALASKA Nov. 28, 1955  
 MAP 1