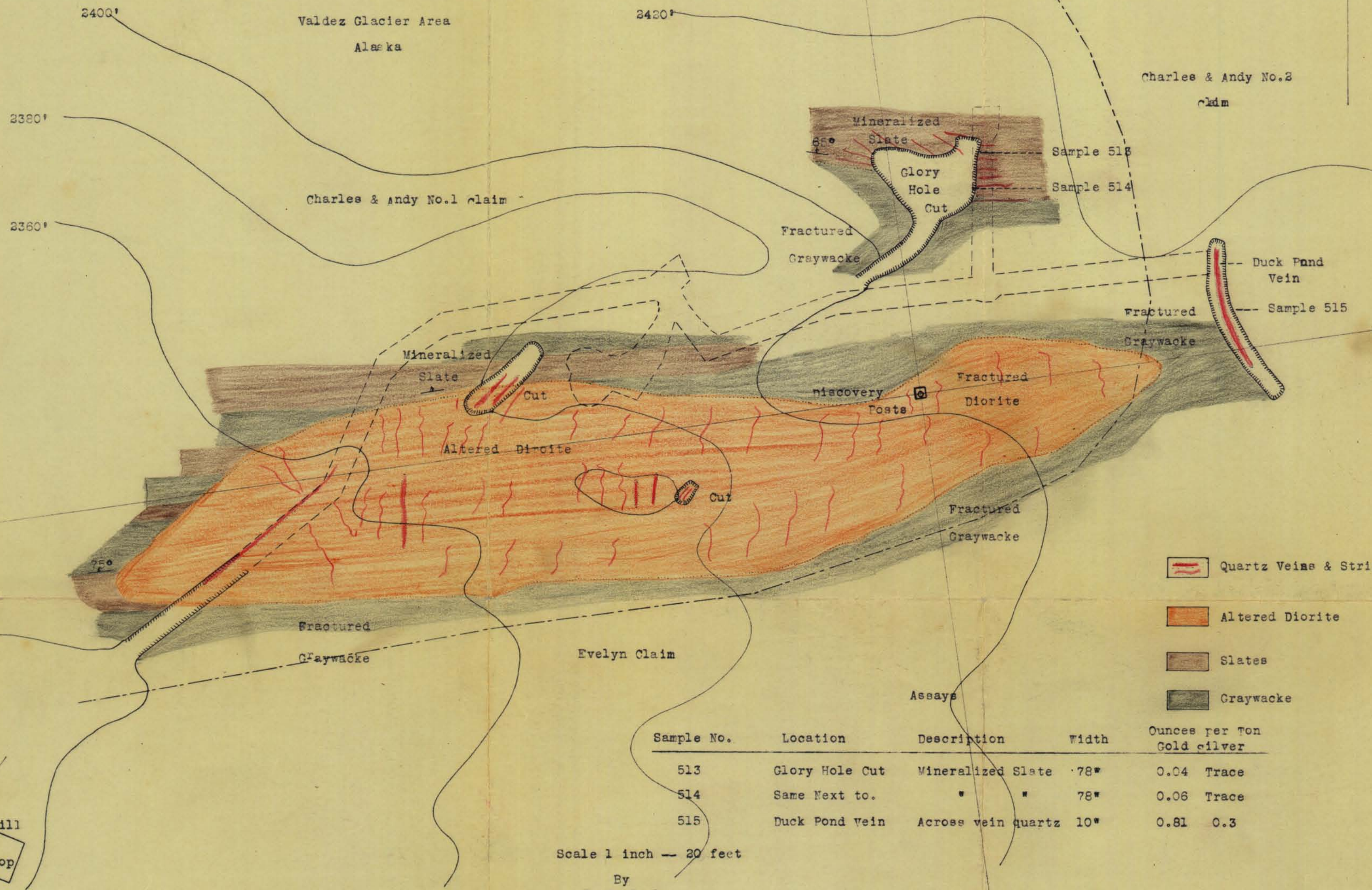
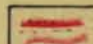





Plate No. 1

Geological Sketch  
 of  
 Surface Workings  
RUFF & TUFF MINE

Valdez Glacier Area  
 Alaska



-  Quartz Veins & Stringer
-  Altered Diorite
-  Slates
-  Graywacke

Sample No.	Location	Description	Width	Ounces per Ton Gold silver
513	Glory Hole Cut	Mineralized Slate	78"	0.04 Trace
514	Same Next to.	" "	78"	0.06 Trace
515	Duck Pond Vein	Across vein quartz	10"	0.81 0.3

Scale 1 inch = 20 feet

By  
 J. C. Boehm  
 Associate Engineer

To Mill  
 Shop