



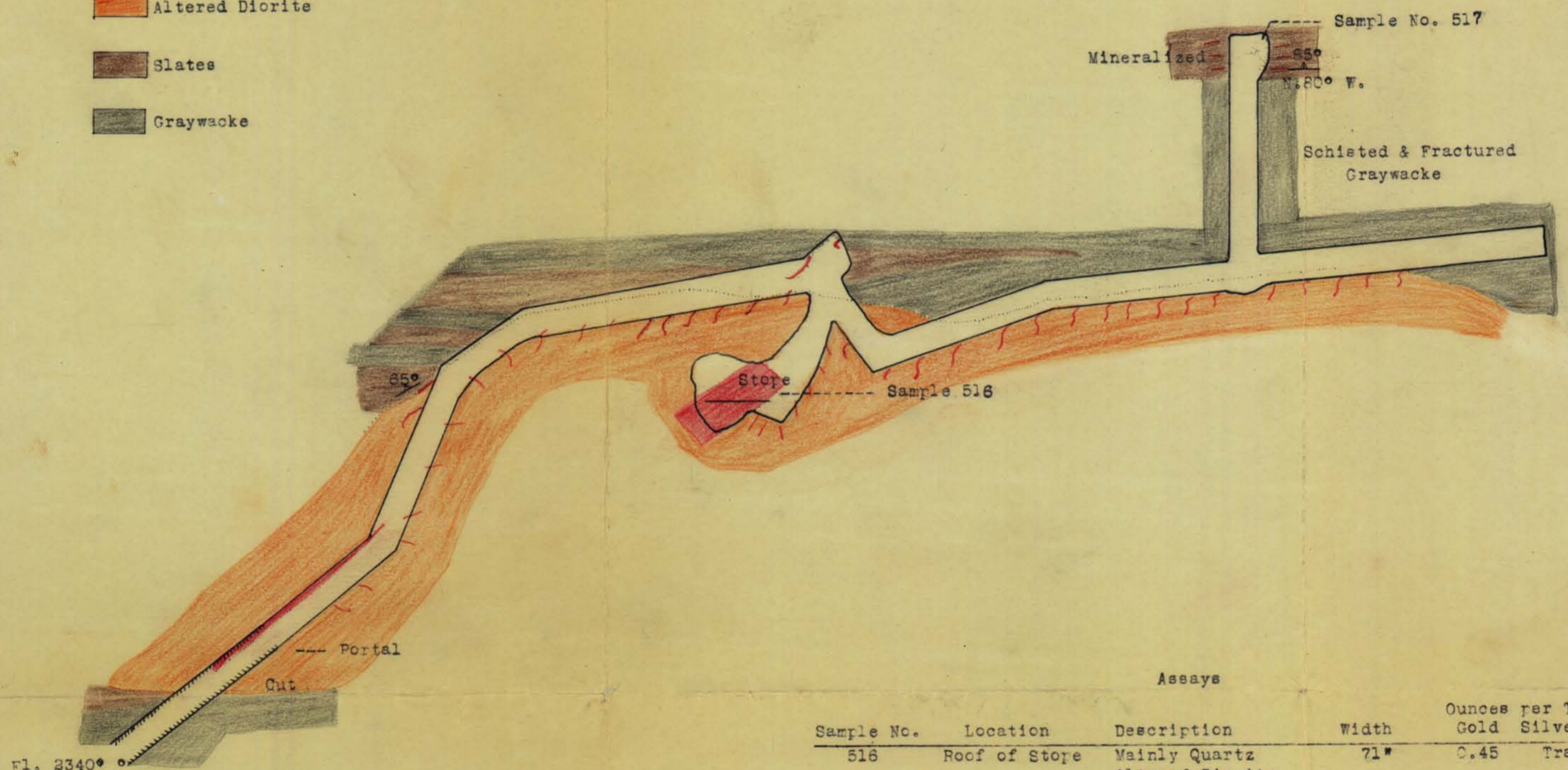


North

Plate No. 3
 Geological Sketch
 of
 Underground Workings
RUFF & TUFF MINE
 Valdez Glacier Area
 Alaska

-  Quartz Veins & Stringers
-  Altered Diorite
-  Slates
-  Graywacke



Sample No.	Location	Description	Width	Assays	
				Ounces per Ton Gold	Silver
516	Roof of Stope	Mainly Quartz Altered Diorite	71"	0.45	Trace
517	Cross-cut East Wall	Across quartz stringers & Mineralized Schists	50"	0.03	Trace

Scale 1 inch = 20'

By
 J. C. Roehm
 Associate Engineer