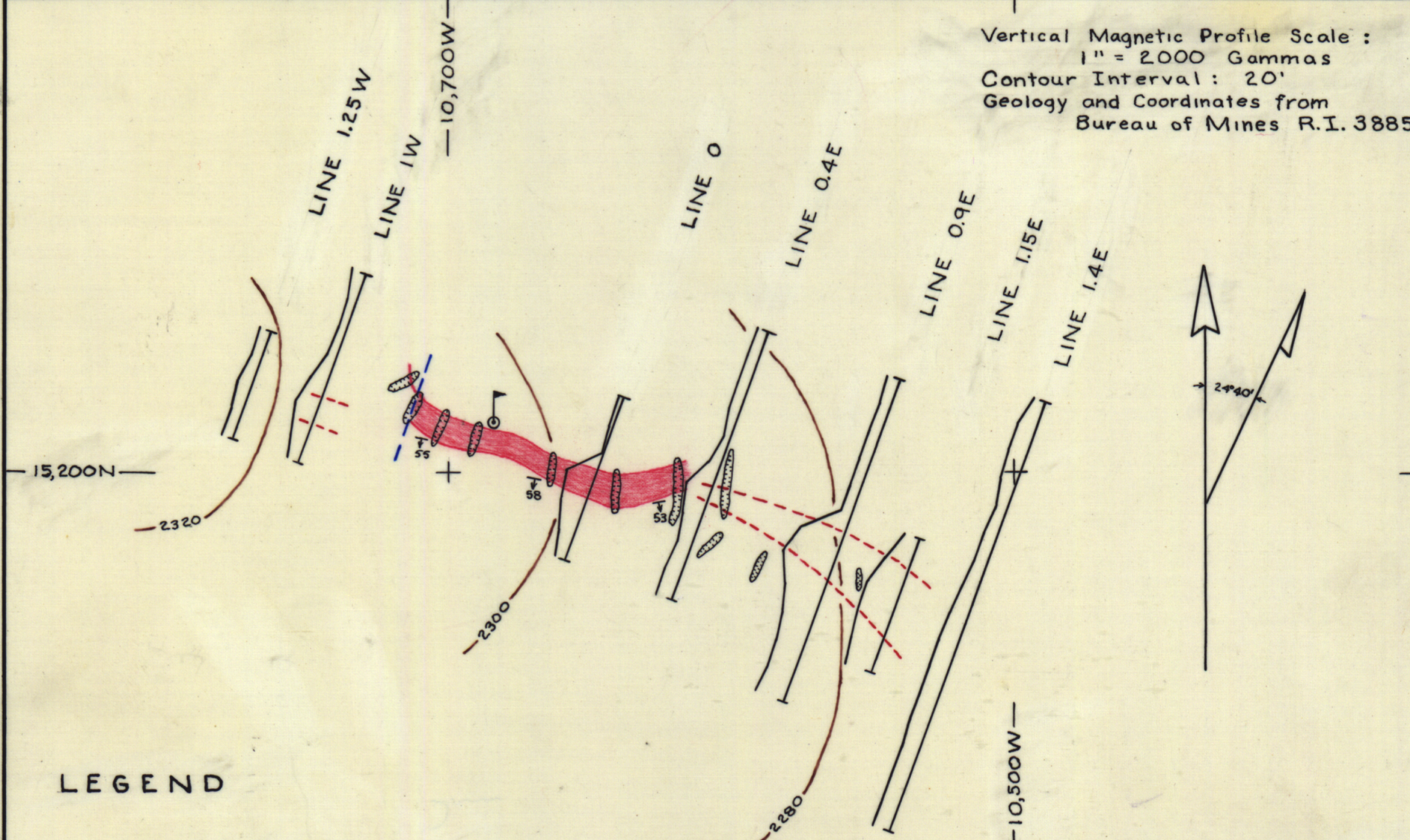


Vertical Magnetic Profile Scale :
 1" = 2000 Gammas
 Contour Interval : 20'
 Geology and Coordinates from
 Bureau of Mines R.I. 3885



LEGEND

- |—|— Magnetic Traverse
- █ Proven Chromite Deposit
- - - Deposit Indicated by Magnetic Profiles
- - - Fault, Dip Unknown

TERRITORY OF ALASKA
 DEPARTMENT OF MINES
 MAGNETIC TRAVERSES
 AT JUNEAU NO. 1 DEPOSIT
 Scale: 1" = 50'
 J.A. Williams February 1954

104-Deerline