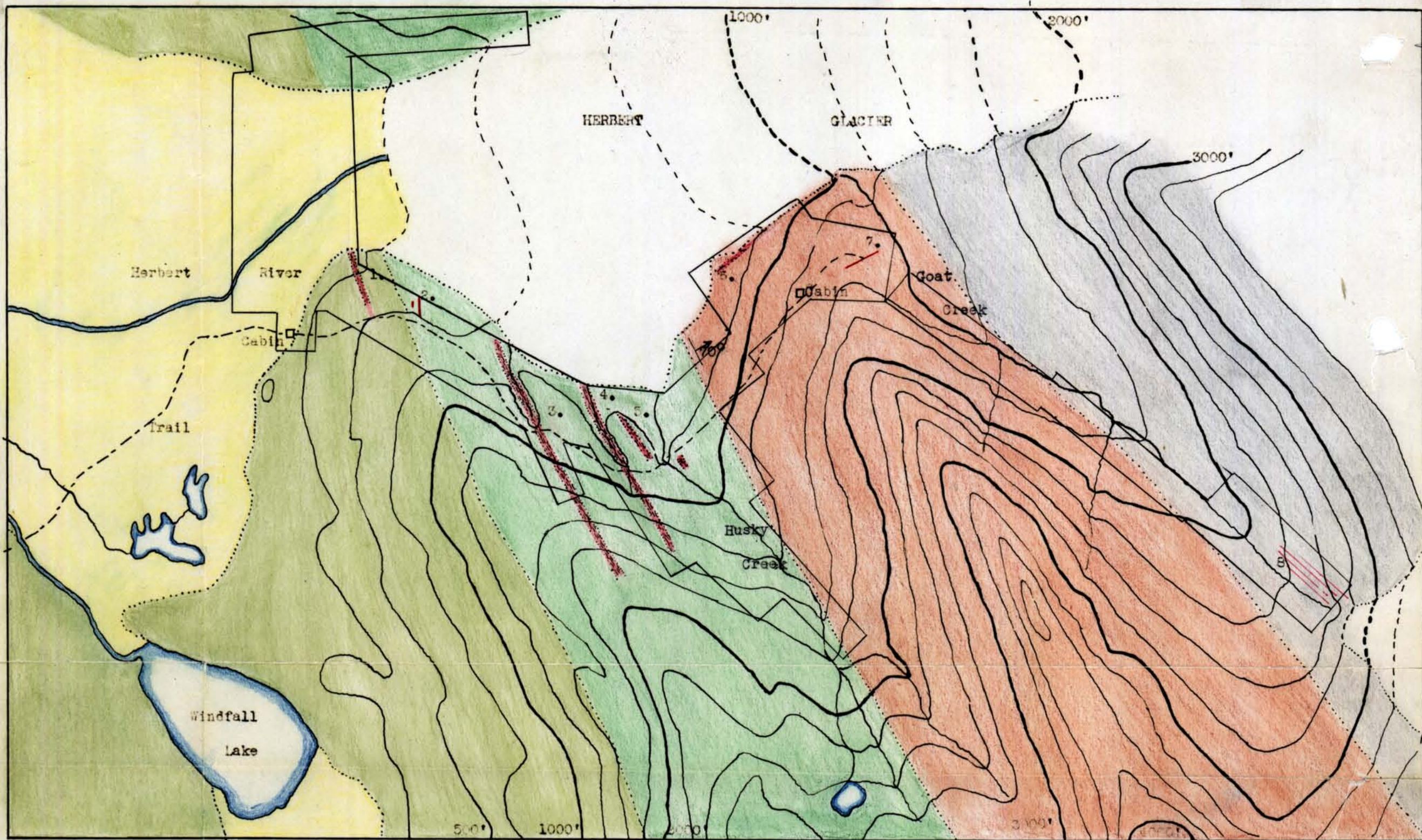








Geological Sketch
 Herbert Glacier Region
 Juneau Gold Belt
 Alaska



Scale 1" = 1736'

Contour Interval 250'

- | | | |
|---|---|---|
|  |  |  |
| Glacial Deposits
Silt, Sand, Gravel | Berners Formation
Slate & Graywacke
Some Greenstone
Highly altered
and folded | Greenstone Schists
Metamorphic phase of
Berners formation |
|  |  |  |
| Quartz Diorite
Gneiss | Highly Schisted
Sediments
Mineralized & Silicified | Mineralized Zones
Stringer Lodes
10% Quartz |

1. Silicified Zone-Schisted Graywacke and Slate. 200' Width.
2. Quartz Lense -140' long. 2 to 8' width
3. Mineralized and Silicified Slate Band. 150' width.
4. Mineralized and Silicified Slate Band. 150' width.

-  Quartz Veins
Containing
Gold Values

5. Mineralized Slate Band. 60' Width.
6. Mineralized Zone in Quartz Diorite Gneiss.
7. Quartz Vein-Exposed 150' Width 6 to 8".
8. Altered, Mineralized and Silicified Sediment Band.

Herbert Group Claims
 (Boundaries approximate)
 Geology & Topography
 (Enlarged Three Times)
 From
 Geological Map
 of
 Eagle River Region
 by
 Adolph Knopf
 Bulletin 502
 U.S.G.S.